

Problem Formulation for the Environmental Risk Assessment of GE Growth-enhanced Coho Salmon

Rosalind Leggatt^{1,2} and Robert Devlin¹



Fisheries and Oceans
Canada

Pêches et Océans
Canada

¹Centre for Aquatic Biotechnology Regulatory Research, West Vancouver, Canada

²Biotechnology and Genomics Program, Ottawa, Canada

Canada

Regulation of Genetically Engineered Fish in Canada

Regulated under Canadian Environmental Protection Act (CEPA)
New Substances Notification Regulations (Organisms) [NSNR(O)]



Environmental Risk Assessment – Fisheries and Oceans Canada (DFO)

- **Risk \propto Exposure x Hazard**, including measurement of uncertainty
- Peer reviewed and published



- Science Advice to Environment and Climate Change Canada and Health Canada
- Regulatory decision on use of GE fish under CEPA NSNR(O)

Risk Assessment begins with Problem Formulation

- Defines scope of risk assessment and protection goals
- Provides description of procedures for concluding on risk
- Provides a characterization of the organism and comparator species
- Provides a characterization of ecological parameters for the receiving environment

GE Fish Approved for Commercial Use in Canada

2015



- **AquAdvantage™ salmon**
- Atlantic salmon containing a growth hormone transgene (GH) to produce faster growth for land-based aquaculture
- Currently under assessment for expansion

- **GloFish® Electric Green® Tetra**
- White tetra containing a Cnidarian green fluorescent protein transgene to produce a new colour morph for the ornamental aquarium trade

2017



Currently under assessment:

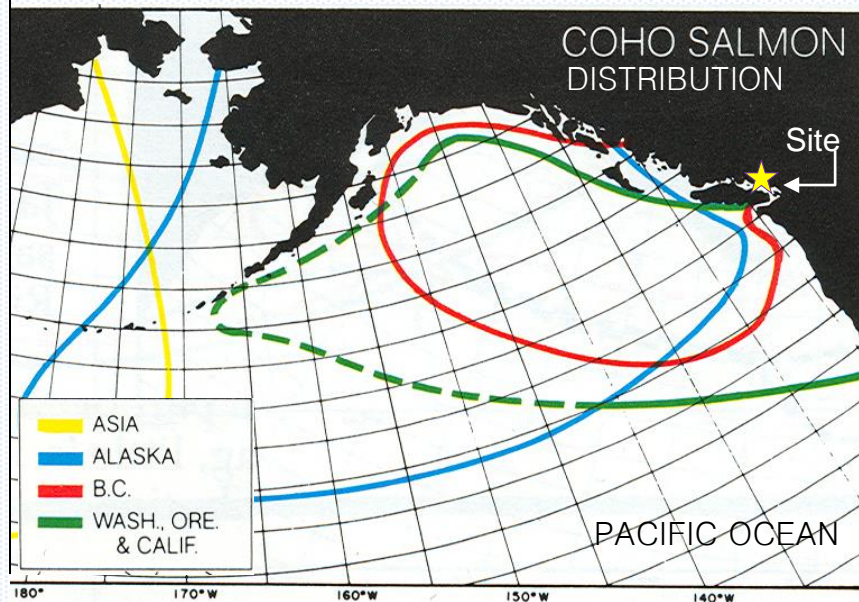


- **GloFish® Tetra Lines**
- White tetra containing different coloured Cnidarian fluorescent protein transgenes to produce new colour morphs for the ornamental aquarium trade

TEST CASE: ERA of GH Transgenic Coho Salmon



- Research line containing a sockeye growth hormone (GH) transgene driven by a metallothionin promoter for fast growth
- Developed to examine impacts of accelerated growth in salmonids (not for commercial use)
- Physiology and ecological impacts well studied



Use scenario:

- Theoretical land-based aquaculture of triploid (sterile) GH transgenic coho salmon for domestic food market + diploid (fertile) broodstock
- Located in Burrard inlet, BC, Canada within natural marine and freshwater ranges of wild stocks of coho salmon

- Risk protection goals focus on **impacts to wild coho salmon through hybridization**
- Also examine: impacts through trophic interactions, environmental toxicity, horizontal gene transfer, as a vector of disease, and to habitat, biogeochemical cycling, and biodiversity

Protection Goal: Maintenance of Wild Coho Salmon Stocks



Coho salmon:

- Anadromous: spawn in rivers, juveniles live in rivers or lakes
- Migrate to Pacific Ocean at 1.5 y
- Return to home river to spawn and die at 3 y of age
- Home to specific rivers to spawn: many genetically and ecologically distinct populations



Ecological Importance:

- Important in marine and freshwater food webs as both predator and prey
- Massing spawn die-off plays a large role in riparian ecosystem nutrient cycling and biodiversity

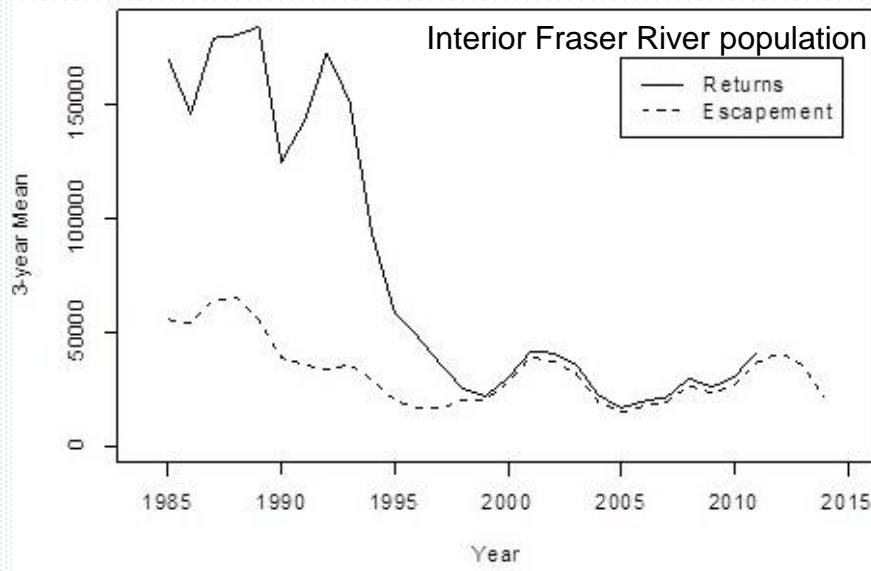
Protection Goal: Wild Coho Salmon Stocks

Socioeconomic Importance:

- CND\$ 2.5-4 million landed in commercial fisheries yearly
- Contribute to CND\$ 8 billion recreational fisheries
- Cultural importance to Indigenous communities



Current threats to wild coho salmon populations



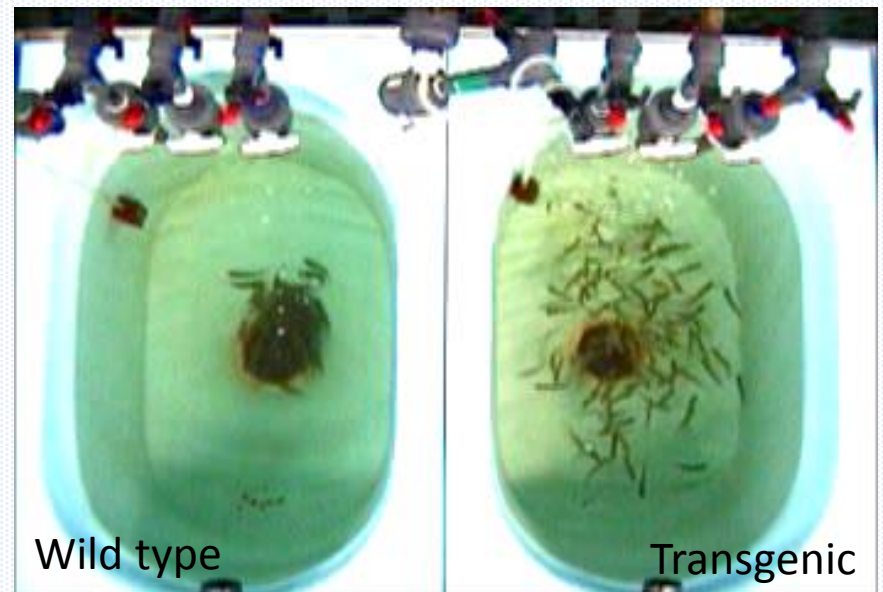
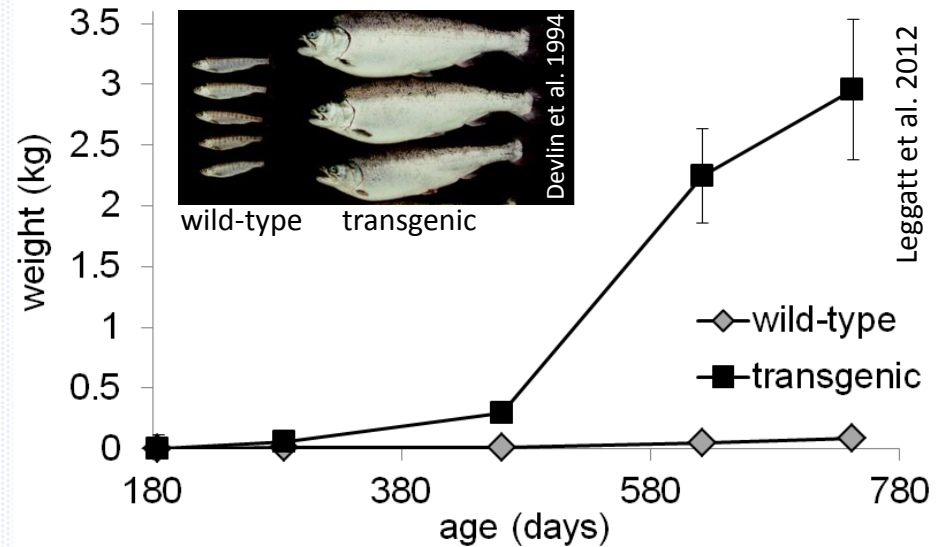
- Threatened by overfishing, climate change, habitat disruption, invasive species, competition with hatchery fish (COSEWIC 2016)

Could GH transgenic coho salmon further threaten wild coho populations?

Characterization of GH Transgenic Coho Salmon

- **TARGETED PHENOTYPE:** Fast growth and improved feed conversion efficiency
- **OFF-TARGET EFFECTS:** results in pleiotropic unintended phenotypes
- Alterations in every major characteristic examined (Devlin et al. 2015), e.g.:
 - life history timing (e.g. mature at 2 versus 3 years of age)
 - gene expression
 - disease resistance
 - behaviour

➤ **Potential effects from targeted as well as off-target effects must be considered in ERA**



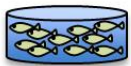
Genotype x Environment Interactions: Uncertainty in Using Laboratory Data to Predict Effects in Nature

Sundström et al. 2004,
Devlin et al. 2015

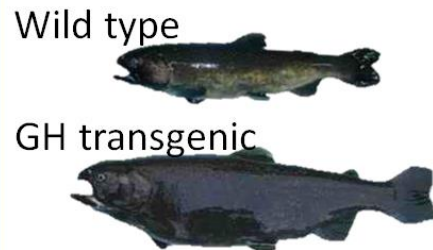


- Transgenic and wild-type coho salmon respond to different environments (e.g. hatchery versus semi-natural) very differently
- Strong genotype x environment interactions (GxE) make predictions of success in nature using laboratory data problematic with high uncertainty
- Identifies the importance on not relying solely on data from culture environment

Small-scale culture
4000L



Mesocosm
350,000L



Nature
 $\approx 7.14 \times 10^{14}$ L



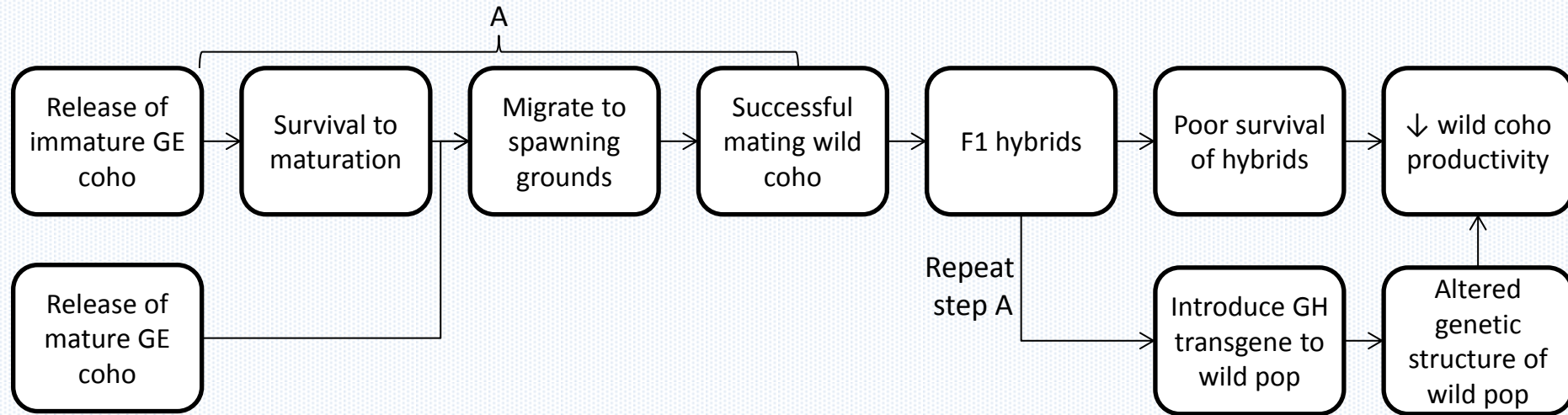
?

SEAWATER

Leggatt et al. 2017

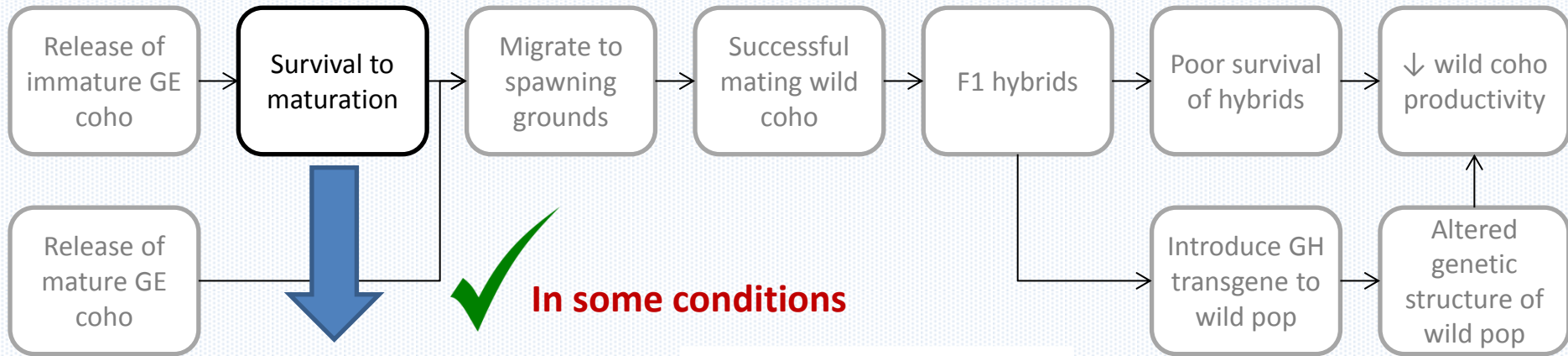
Pathway to Harm: Hybridization with Wild Populations

- What steps would need to be completed for GH transgenic salmon to harm wild populations?
- **Example Scenario: Pathway to harm through hybridization with wild populations:**



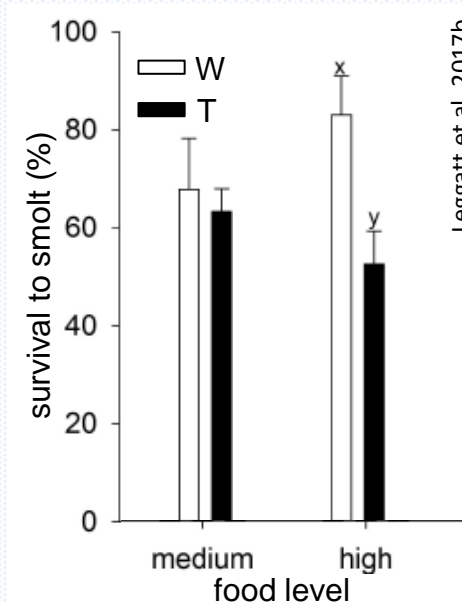
- **What scientific research is needed/available to address each step?**

Pathway to Harm: Hybridization with Wild Populations



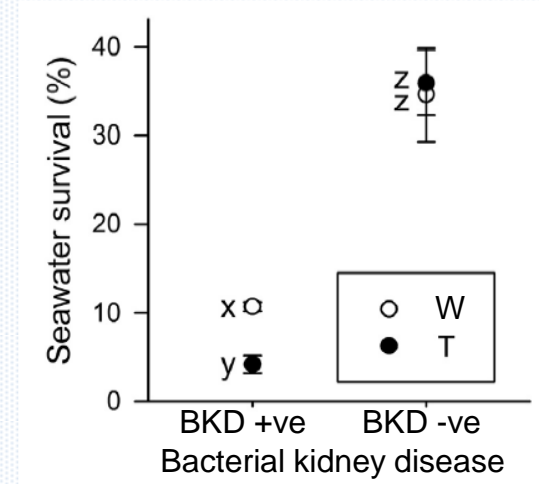
- Survival in culture is generally much higher than in nature
- Studies in semi-natural conditions indicate:
 - Survival will likely depend on time of release, disease status of released fish, availability of food, presence of predators, etc.

➤ **Survival is possible**, although expected to vary relative to wild populations depending on conditions



Leggatt et al. 2017b

Semi-natural stream

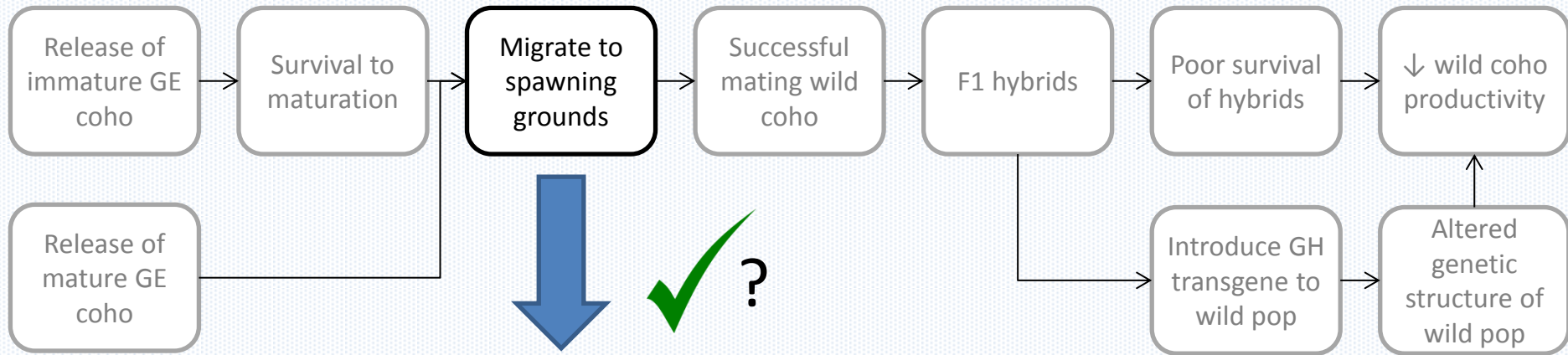


Leggatt et al. 2017

Seawater mesocosms

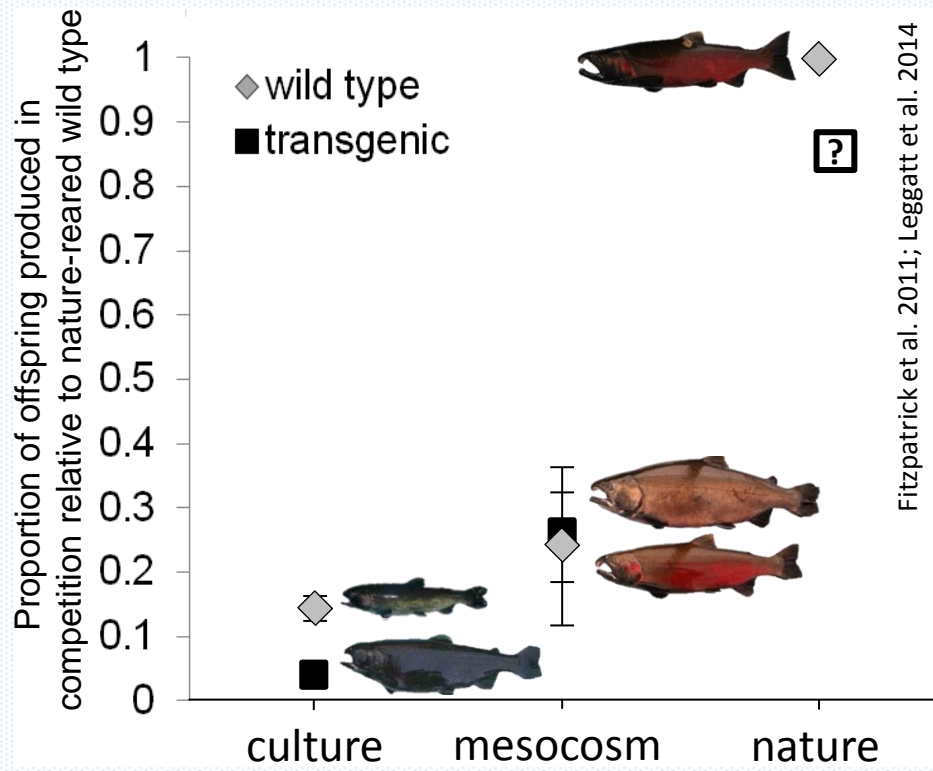
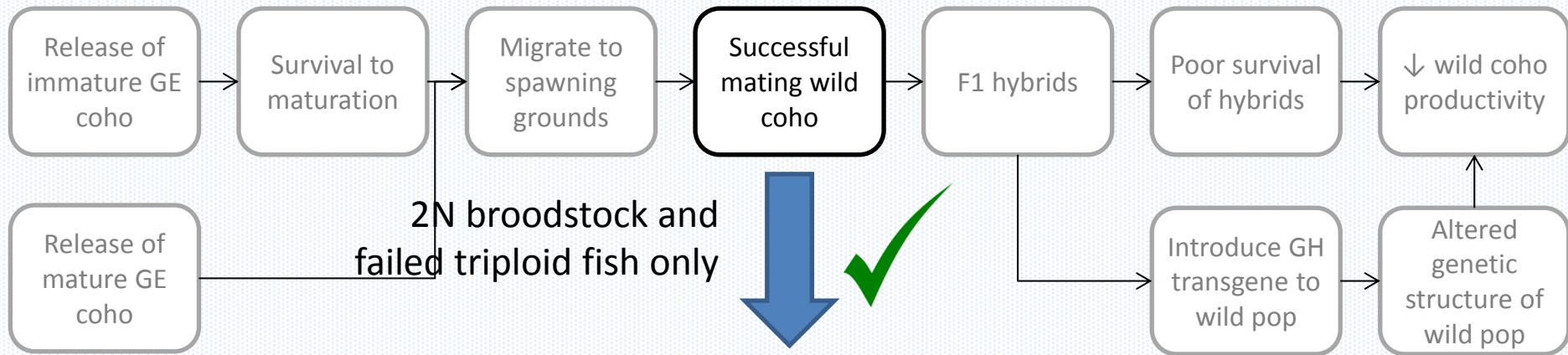


Pathway to Harm: Hybridization with Wild Populations



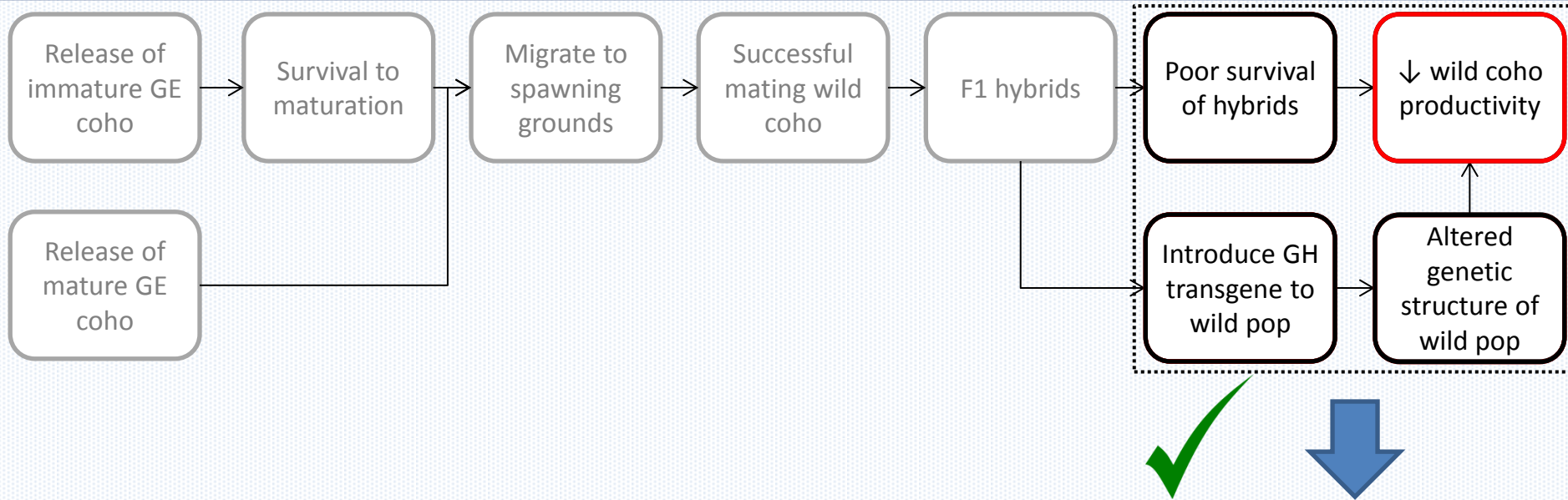
- Has not been examined in GH transgenic coho salmon
 - 3N females not expected to migrate
 - Domesticated Atlantic salmon as surrogate organism: while many farmed escapes do not return to freshwater, some do (see Glover et al. 2017)
 - Aquaculture site is within migration range of many wild coho populations
 - Cannot exclude the potential for escaped 2N GH transgenic salmon to migrate to spawning grounds
- **Migration is predicted, but not empirically tested**

Pathway to Harm: Hybridization with Wild Populations



- Early studies found laboratory-reared GH transgenic salmon had very poor ability to reproduce with nature-reared wild salmon
 - Wild-type laboratory-reared also had poor spawning success: Large culture effect
 - Rearing in seawater mesocosms decreased impacts of culture, and under these conditions GH transgenic coho salmon had similar reproductive success as wild type
- **Success mating with wild coho predicted**, level may depend on time of release, level of mate competition

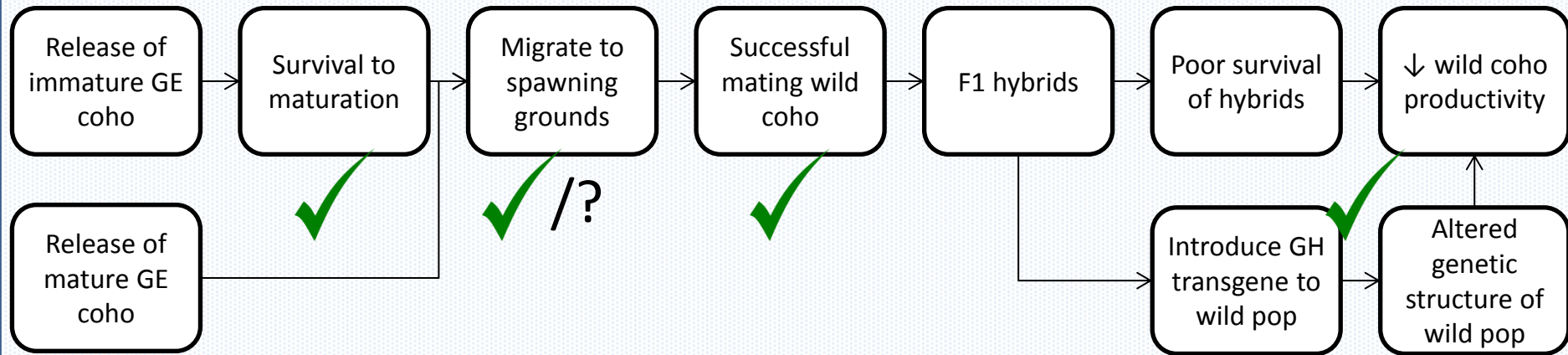
Pathway to Harm: Hybridization with Wild Populations



- GH transgene may decrease survival in some conditions, increase it in others – depend on availability of prey, presence of predators, level of competition, etc.
- Modeling of transgene introgression found the GH transgene in a wild population could potentially shift genetic backgrounds in transgenic and non-transgenic individuals, which could direct phenotypes away from naturally selected optima (Ahrens and Devlin 2011)
- QTL mapping demonstrated the GH transgene alters genetic basis of growth-related traits in coho salmon: postulated to influence evolutionary changes with coho salmon with ecological consequences (Kodama et al 2018)

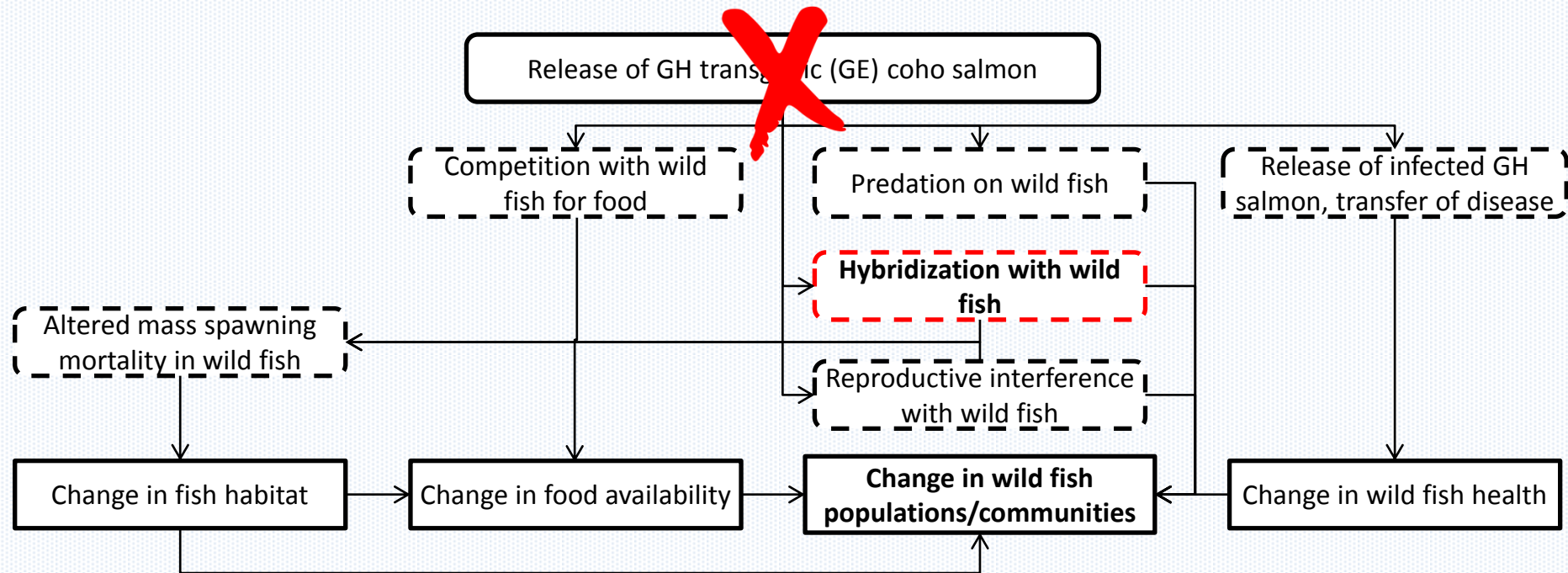
- **Poor survival of hybrids in some conditions predicted**
- **Altered genetic structure of wild populations predicted**

Pathway to Harm: Hybridization with Wild Populations



- All steps post-release have been corroborated to some extent through laboratory studies or use of surrogate organism
 - Potential harm to wild populations through hybridization with GH coho salmon is predicted should GE coho salmon escape
- Predicted level of success/harm of GH transgenic fish differs when examined under laboratory versus semi-natural conditions
 - Importance of simulating relevant natural conditions when examining environmental risk
- Genotype x Environment interactions and limited studies in some steps
 - Moderate Uncertainty in predicting occurrence/level of harm in nature

Other Pathways to Harm to Wild Fish Populations



- Hybridization is only one of several interacting pathways to harm to wild fish populations should GE coho salmon escape aquaculture facilities
- **Importance of Containment to prevent harm to environmental components from GE GH transgenic coho salmon**

Acknowledgements

- Colin McGowan and Sherry Walker, Biotechnology and Genomics Program, Ottawa, Canada
- Fred Sundström, Director of Studies in Biology at Uppsala University, Uppsala, Sweden
- Funding provided by the Canadian Regulatory System for Biotechnology

References

- Ahrens, R.N.M., and Devlin, R.H. 2011. Standing genetic variation and compensatory evolution in transgenic organisms: a growth-enhanced salmon simulation. *Transgenic Res.* **20**(3): 583-597. doi: 10.1007/s11248-010-9443-0.
- COSEWIC 2016. COSEWIC assessment and status report on the Coho Salmon *Oncorhynchus kisutch*, Interior Fraser population, in Canada. Committee on the Status of Endangered Wildlife in Canada. Ottawa. xi + 50 pp.
- Devlin, R.H., Yesaki, T.Y., Biagi, C.A., Donaldson, E.M., Swanson, P., and Chan, W.-K. 1994. Extraordinary salmon growth. *Nature* **371**: 209-210. doi: 10.1038/371209a0.
- Devlin, R.H., Sundström, L.F., and Leggatt, R.A. 2015. Assessing ecological and evolutionary consequences of growth-accelerated genetically engineered fishes. *BioScience* **65**(7): 685-700. doi: 10.1093/biosci/biv068.
- Glover, K.A., Solberg, M.F., McGinnity, P., Hindar, K., Verspoor, E., Coulson, M.W., Hansen, M.M., Araki, H., Skaala, Ø., and Svåsand, T. 2017. Half a century of genetic interaction between farmed and wild Atlantic salmon: Status of knowledge and unanswered questions. *Fish and Fisheries* **18**: 890-927.
- Kodama, M., Naish, K.A., and Devlin, R.H. 2018. Influence of a growth hormone transgene on the genetic architecture of growth-related traits: a comparative analysis between transgenic and wild-type coho salmon. *Evolutionary Applications*. In press. doi: 10.1111/eva.12692.
- Leggatt, R.A., O'Reilly, P.T., Blanchfield, P.J., McKindsey, C.W. and Devlin, R.H. 2010. Pathway of effects of escaped aquaculture organisms or their reproductive material on natural ecosystems in Canada. DFO Can. Sci. Advis. Sec. Res. Doc. 2010/019. vi + 70 p
- Leggatt, R.A., Hollo, T., Vandersteen, W.E., McFarlane, K., Goh, B., Prevost, J., and Devlin, R.H. 2014. Rearing in seawater mesocosms improves the spawning performance of growth hormone transgenic and wild-type coho salmon. *PLoS ONE* **9**(8): e105377. doi: 10.1371/journal.pone.0105377.
- Leggatt, R.A., Biagi, C.A., Smith, J.L., and Devlin, R.H. 2012. Growth of growth hormone transgenic coho salmon *Oncorhynchus kisutch* is influenced by construct promoter type and family line. *Aquaculture* **356**: 193-199. doi: 10.1016/j.aquaculture.2012.05.016.
- Leggatt, R.A., Biagi, C.A., Sakhrani, D., Dominelli, R., Eliason, E.J., Farrell, A.P., and Devlin, R.H. 2017. Fitness component assessments of wild-type and growth hormone transgenic coho salmon reared in seawater mesocosms. *Aquaculture* **473**: 31-42. doi: 10.1016/j.aquaculture.2017.01.022.
- Leggatt, R.A., Sundstrom, L.F., Woodward, K., and Devlin, R.H. 2017b. Growth-enhanced transgenic coho salmon (*Oncorhynchus kisutch*) strains have varied success in simulated streams: implications for risk assessment. *PLoS ONE* **12**(1). doi: 10.1371/journal.pone.0169991.
- Sundström, L.F., Löhmus, M., Tymchuk, W.E., and Devlin, R.H. 2007. Gene-environment interactions influence ecological consequences of transgenic animals. *Proc. Nat. Acad. Sci. U. S. A.* **104**(10): 3889-3894. doi: 10.1073/pnas.0608767104.

