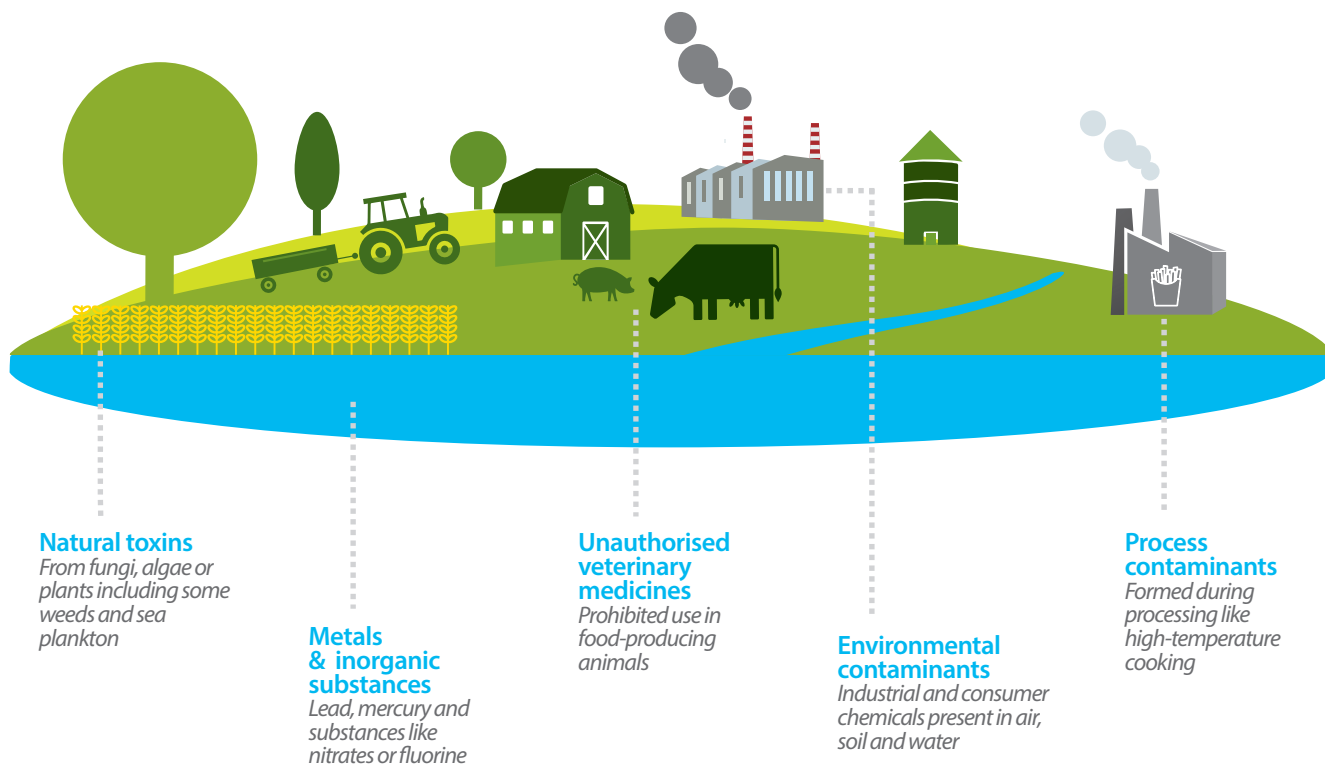


Contaminants in the food chain

Contaminant levels in food and feed are usually too low to harm consumers and animals but they can **cause effects** such as **food poisoning** and their **presence** or **accumulation over time** might affect animal and human health.

WHAT KIND OF FOOD CONTAMINANTS ARE IN **FOOD** & **FEED**?



HOW ARE **CONSUMERS** & **ANIMALS** PROTECTED?



DATA COLLECTION

Member States tell us if foods are contaminated and by how much



RISK ASSESSMENT

Scientists estimate the exposure of humans and animals to contaminants and the potential risks



RISK MANAGEMENT

Data and advice provide a scientific basis for decision-making by risk managers

Visit the EFSA topic page: www.efsa.europa.eu/en/topics/topic/contaminantsfoodfeed