

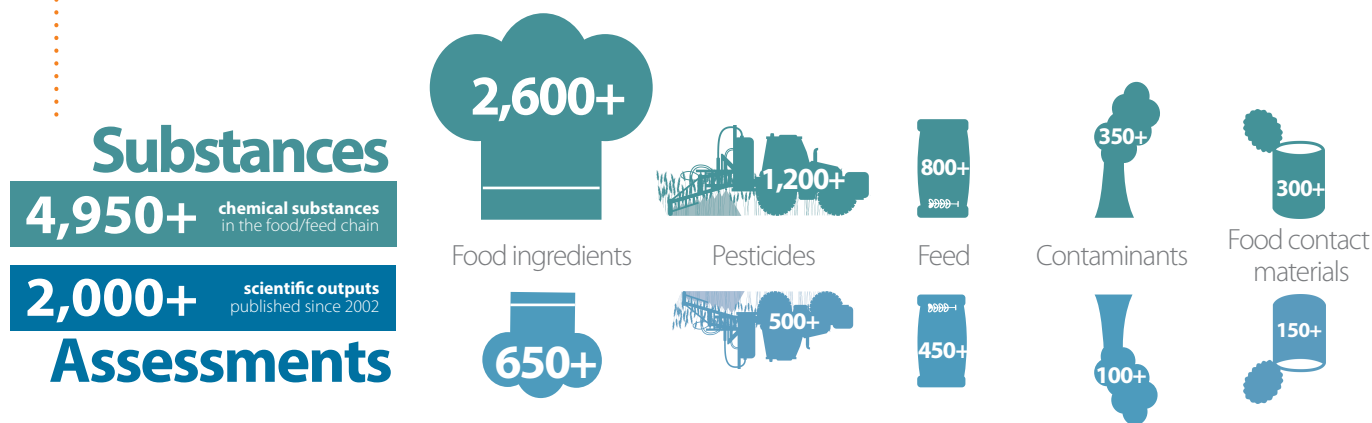
OpenFoodTox: chemical hazards database

an **open-source database**
of toxicological information

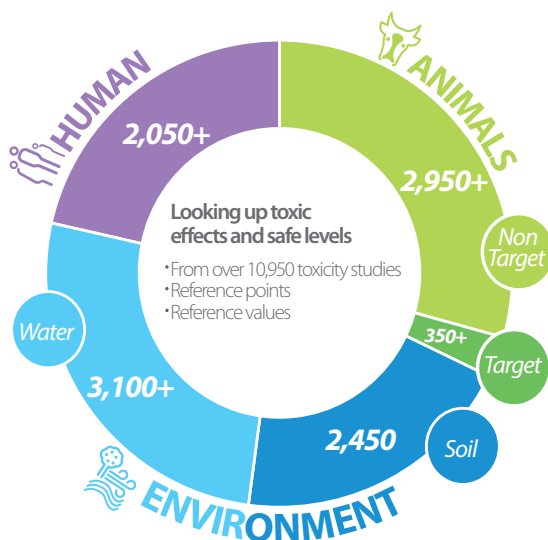


a **"one-click" tool** for risk assessors,
risk managers and stakeholders

OpenFoodTox provides **chemical hazards data**:



Use OpenFoodTox for



information on chemical characterisation,
regulations, EFSA outputs, toxicity,
reference points (NOAEL, BMD, LD50, etc.) and
reference values (ADI, TDI, PNEC, etc.)*,
uncertainty factors, EFSA scientific outputs.



developing future **methods and tools**
as alternatives to animal testing.

*reference points: No observed adverse effect level (NOAEL), benchmark dose (BMDL) limits, lethal doses/concentrations (LD50), etc.
reference values: health-based guidance values such as acceptable/ tolerable daily intake (ADI/TDI), and environmental standards like predicted no effect concentration (PNEC)

Visit EFSA's Scientific Data Warehouse: <https://www.efsa.europa.eu/science/data>