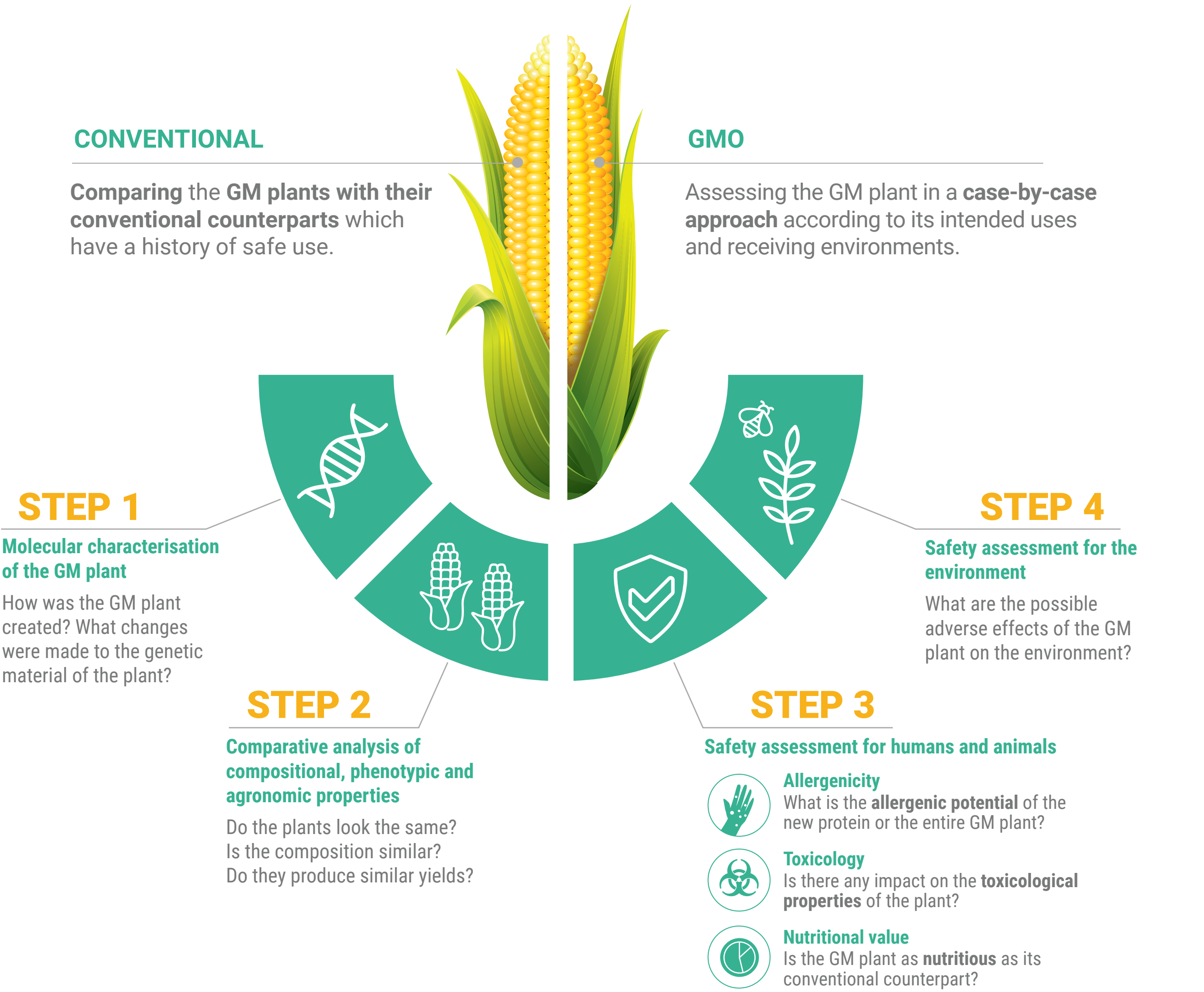


Risk Assessment OF GENETICALLY MODIFIED PLANTS

EFSA evaluates the safety of **genetically modified (GM) plants** - such as maize, soybeans, cotton and oilseed rape - before these plants are authorised for import into the EU for use as food or feed or for cultivation.

The **genetic modification** provides the plants with additional properties such as a better **resistance to plant-eating insects**, a stronger **tolerance of herbicides** or both.

EFSA APPLIES THE PRINCIPLES OF GMO RISK ASSESSMENT



AND WHAT IS NEXT?

If EFSA finds no reason for concern it considers the GM plant **as safe as its conventional counterpart**.



This information helps **EU risk managers** decide on the **market introduction of the plant**.

