

Management Board
21 March 2024



CONSOLIDATED ANNUAL ACTIVITY REPORT 2023

YEAR OF GROWTH

Risk assessment
production



Budget execution and
partnerships



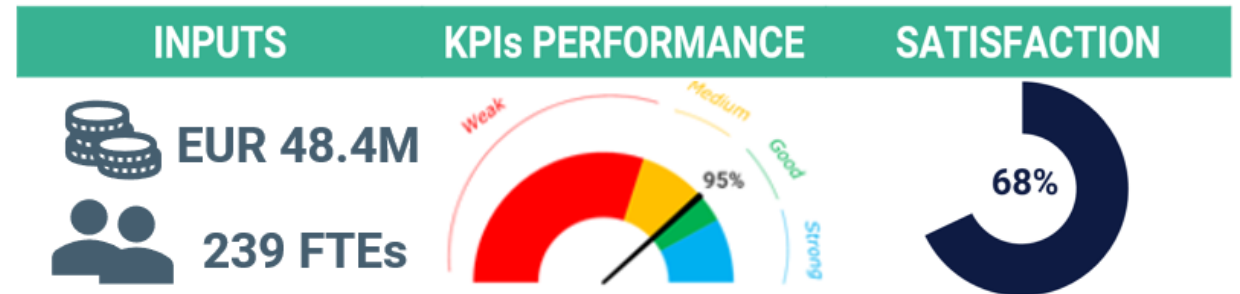
New processes, new
roles, new organisation



OVERVIEW OF EXPECTED OUTCOME 1.1

SCIENTIFIC ADVICE

OVERALL PERFORMANCE



HIGHLIGHTS

- Citations of EFSA's scientific outputs over target
- Good performance overall in RA of applications
- Positive stakeholders' perception on EFSA's impartiality

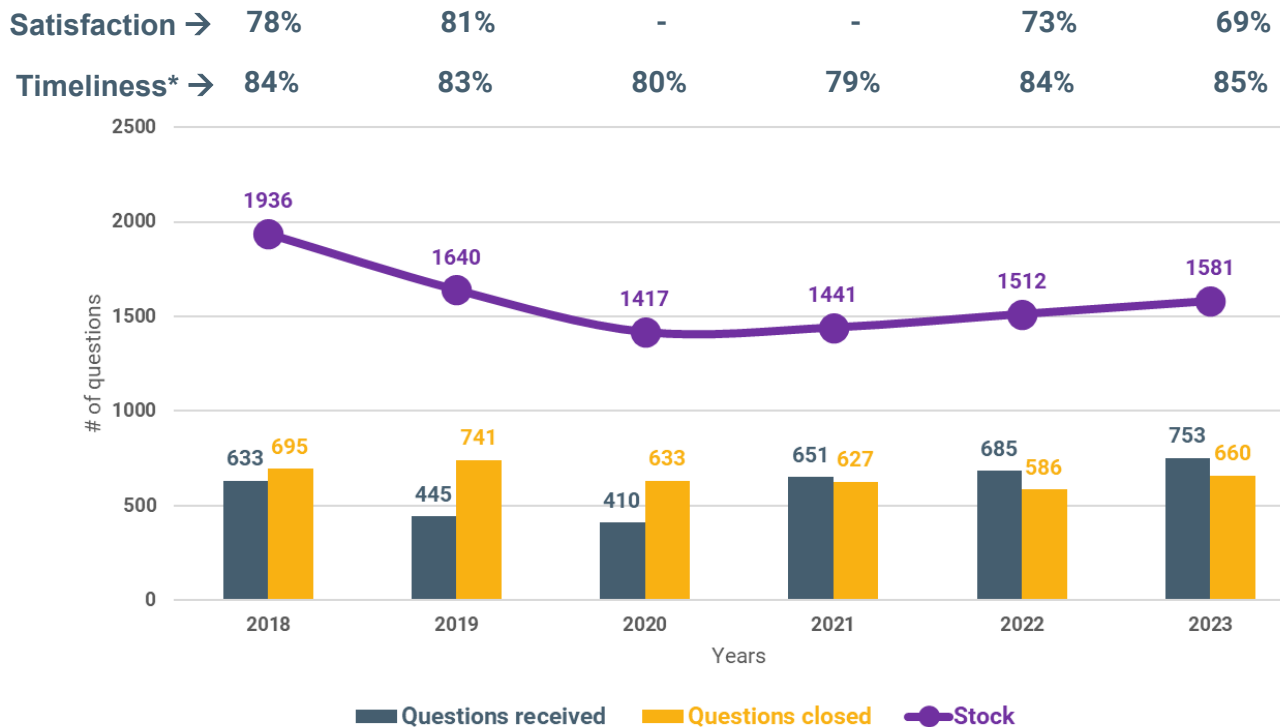
ATTENTION AREAS

- Pesticides (questions closed, stock, timeliness) and Generic RA (timeliness) performance
- Small decrease in satisfaction rate (timeliness, applicants' support)

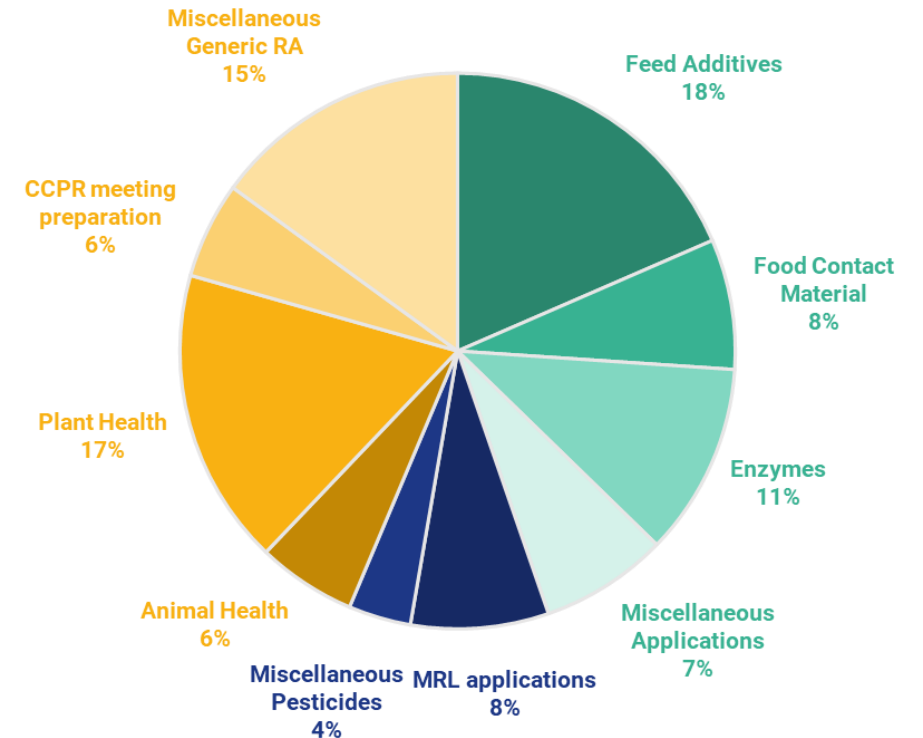


PERFORMANCE OF RISK ASSESSMENT PROCESS

Overall performance in the past 5 years



Breakdown of questions closed in 2023 by food sector area



Applications: 295 questions closed, timeliness at 89.7%

Pesticides: 77 questions closed, timeliness at 76.0%

Generic RA: 288 questions closed, timeliness at 81.3%

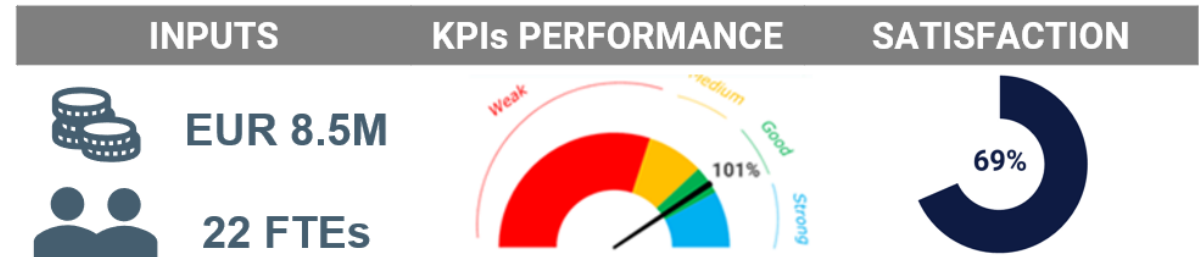
* timeliness 2017-2021 adjusted (reduced by 3 p.p.) to make it more comparable with 2022 onward (due to change in the methodology)



OVERVIEW OF EXPECTED OUTCOME 1.2

COMMUNICATION

OVERALL PERFORMANCE



HIGHLIGHTS

- Continuous growth of **EFSA's multilingual policy**
- Good performance of **EFSA's campaigns**
- Survey's respondents satisfied with **EFSA's clarity of communication**

ATTENTION AREAS

- **Social media interactions** below target
- Small decrease in **satisfaction rate** (reach of communication)



EFSA'S CAMPAIGNS

2021

2022

2023



**Our science.
Your confidence.**

Make your food choices confidently.
#WorldFoodSafetyDay

A EUROPEAN HEALTH INITIATIVE

efsa
European Food Safety Authority
Trusted science for safe food.

Campaign | 7 June 2021
EU Choose Safe Food



Campaign | 20 July 2022
Stop African swine fever



**KEEP NATURE
HEALTHY,**
don't bring plants home

#PlantHealth4Life

Campaign | 25 July 2023
#PlantHealth4Life

12 countries involved in 2023



Installations in 3 travelling hubs
(Amsterdam, Madrid, Milan)



Media work and direct campaign exposure reached estimated **87 million** people



OVERVIEW OF EXPECTED OUTCOME 2.1

PREPAREDNESS FOR
FUTURE RISK
ANALYSIS NEEDS

OVERALL PERFORMANCE



HIGHLIGHTS

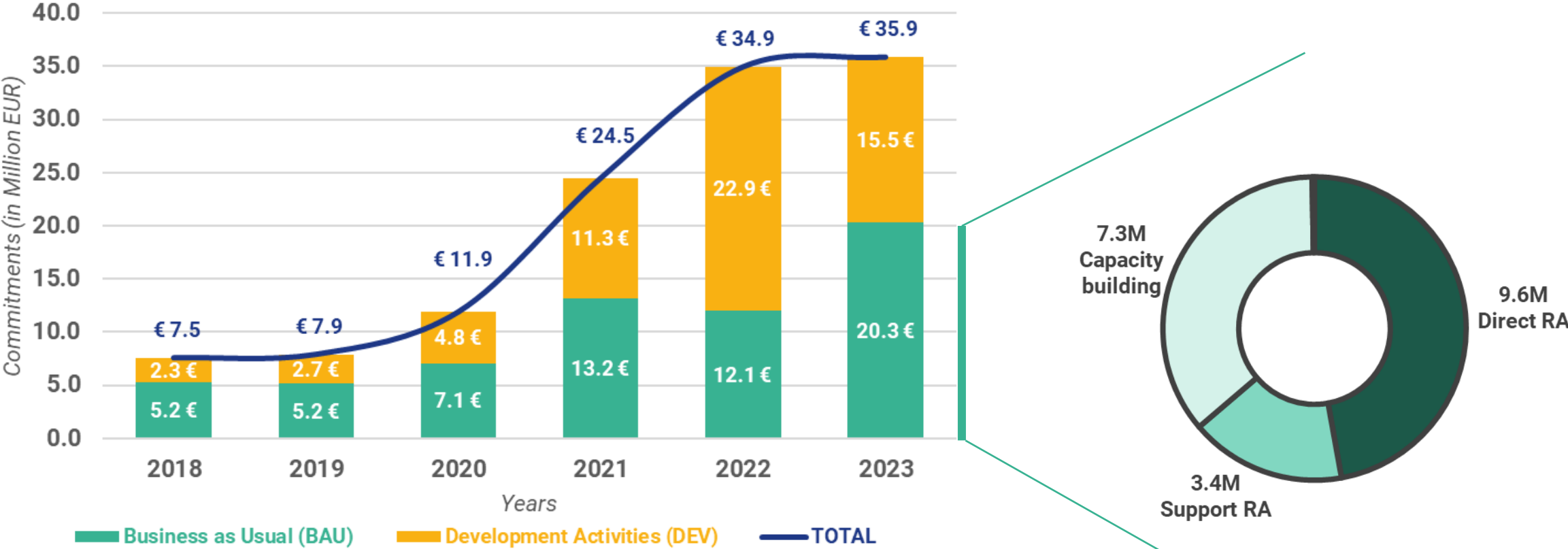
- Resources allocated to **BAU outsourcing** above target, and higher than foreseen **number of organisations contributing to EFSA's work programme**
- **Methods and Data preparedness** to address RM's requests exceeding targets
- Positive feedback from **external survey**

ATTENTION AREAS

- **Project performance** slowed down in the areas of harmonisation



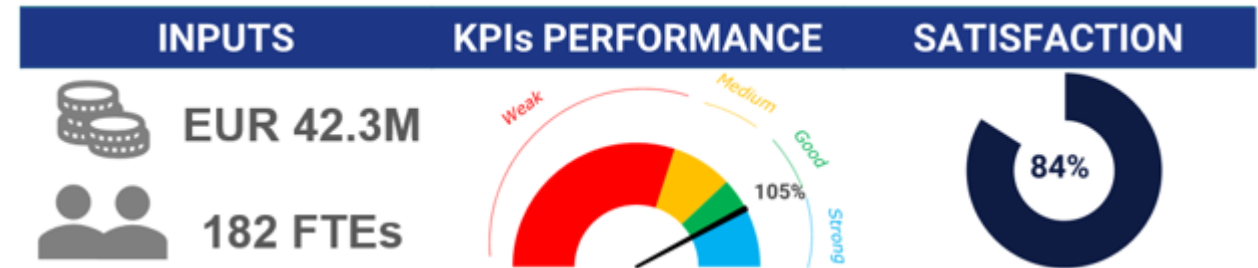
GRANTS AND PROCUREMENTS EVOLUTION 2018-2023



OVERVIEW OF EXPECTED OUTCOME 3.1

**EMPOWER PEOPLE
AND ENSURE
ORGANISATIONAL
AGILITY**

OVERALL PERFORMANCE



HIGHLIGHTS

- Excellent **occupancy rate**
- Positive outcomes of **ISO and ECA audits**, backed also by **positive external survey's result**
- **Budget execution** in line with targets
- Overall **positive process and project** performance
- **Organisational changes** finalised
- Excellent **staff engagement and management indexes**

ATTENTION AREAS

- **Leadership index** below target
- Low staff perception of **efficiency of processes and procedures**, and **IT systems**



RESOURCES MANAGEMENT – BUDGET AND TRANSFERS 2023

Execution



Commitment

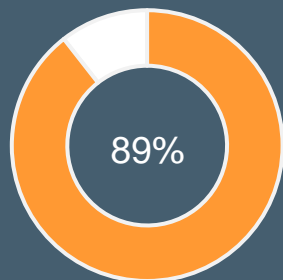
€ 155.5M

Target fully met



Diff. payment
€27.9M

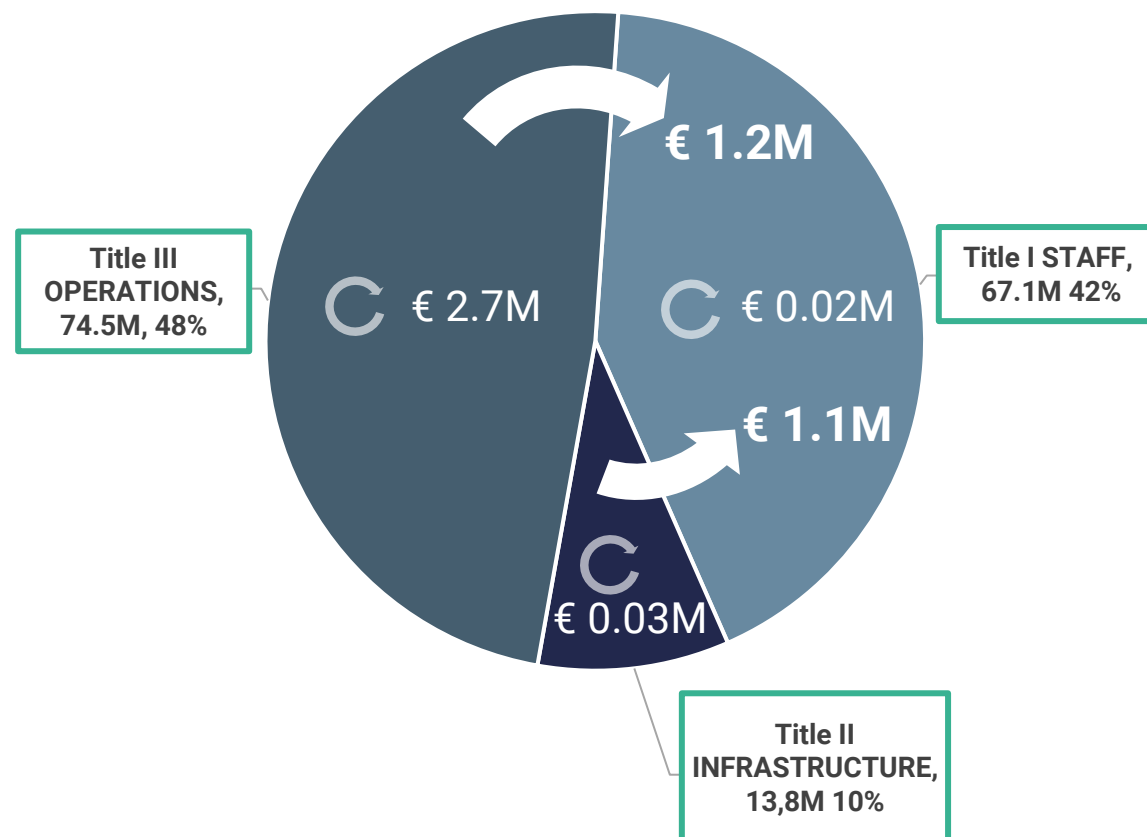
Target fully met



Non-diff. payment
107.0€M

1 p.p. below 90%
target

Transfers



Internal transfers
between chapters



DETAIL OF SCIENTIFIC PERFORMANCE BY AREA

REGULATED PRODUCTS – 1/2

| Area | Questions closed | | | Timeliness of adoption | | | Stock of questions | |
|--|------------------|----------|-------------|------------------------|----------|-------------|--------------------|-------------|
| | Actual 2023 | Plan | Actual 2022 | Actual 2023 | Plan | Actual 2022 | Actual 2023 | Actual 2022 |
| BIOHAW - total Regulated Products | 0 | 1 ● | 1 ● | - | 90% ● | 100% ● | 1 | 0 ● |
| Animal by-products | 0 | 1 ● | 1 ● | - | 90% ● | 100% ● | 1 | 0 ● |
| AMT-Decontamination dossiers | 0 | 0 ● | 0 ● | - | 90% ● | - ● | 0 | 0 ● |
| FEED - total Regulated Products | 122 | 120 ● | 104 ● | 83.5% | 90% ● | 56% ● | 217 | 237 ● |
| Feed Additives applications | 122 | 120 ● | 104 ● | 83.5% | 90% ● | 56% ● | 217 | 237 ● |
| FIP- total Regulated Products | 142 | 143 ● | 144 ● | 94.3% | 90% ● | 94% ● | 441 | 433 ● |
| Flavourings applications | 9 | 13 ● | 2 ● | 66.7% | 90% ● | 100% ● | 7 | 14 ● |
| Flavourings re-evaluation | 0 | 6 ● | 14 ● | - | 90% ● | 100% ● | 6 | 6 ● |
| Food Additives applications | 3 | 9 ● | 3 ● | 100% | 90% ● | 100% ● | 28 | 23 ● |
| Food Additives re-evaluation | 6 | 12 ● | 5 ● | 100% | 90% ● | 33% ● | 121 | 127 ● |
| Food Contact Material | 50 | 48 ● | 53 ● | 98% | 90% ● | 98% ● | 62 | 88 ● |
| Enzymes | 74 | 55 ● | 66 ● | 100% | 90% ● | 94% ● | 217 | 175 ● |
| Decontamination substances evaluation | 0 | 0 ● | 1 ● | - | 90% ● | - ● | 0 | 0 ● |



DETAIL OF SCIENTIFIC PERFORMANCE BY AREA

REGULATED PRODUCTS – 2/2

| Area | Questions closed | | | Timeliness of adoption | | | Stock of questions | |
|--|------------------|---------|-------------|------------------------|----------|-------------|--------------------|-------------|
| | Actual 2023 | Plan | Actual 2022 | Actual 2023 | Plan | Actual 2022 | Actual 2023 | Actual 2022 |
| NIF - total Regulated Products | 31 | 57 ● | 49 ● | 90.6% | 90% ● | 96% ● | 208 | 188 ● |
| Novel Foods | 22 | 42 ● | 31 ● | 100% | 90% ● | 100% ● | 169 | 152 ● |
| Genetically Modified Organisms | 5 | 11 ● | 17 ● | 50% | 90% ● | 88% ● | 34 | 28 ● |
| Health Claims | 2 | 2 ● | 0 ● | 100% | 90% ● | - ● | 3 | 4 ● |
| Foods for special medical purposes and allergens | 1 | 2 ● | 0 ● | 100% | 90% ● | - ● | 0 | 1 ● |
| Infant nutrition applications | 1 | 0 ● | 1 ● | 100% | 90% ● | 100% ● | 2 | 3 ● |
| PREV - total Regulated Products | 77 | 91 ● | 50 ● | 76% | 90% ● | 82% ● | 445 | 393 ● |
| Approval of new active substances | 0 | 5 ● | 8 ● | - | 90% ● | 83% ● | 77 | 57 ● |
| Approval of basic substances | 4 | 12 ● | 1 ● | 100% | 90% ● | 100% ● | 13 | 5 ● |
| Confirmatory information on active substances | 3 | 5 ● | 4 ● | 33.3% | 90% ● | 80% ● | 6 | 3 ● |
| Amendments of the condition of approval of active substances | 1 | 3 ● | 0 ● | 100% | 90% ● | - ● | 5 | 6 ● |
| Renewal of the approval of active substances | 16 | 16 ● | 11 ● | 100% | 90% ● | 78% ● | 244 | 232 ● |
| MRL applications | 53 | 50 ● | 26 ● | 69.4% | 90% ● | 77% ● | 100 | 90 ● |



DETAIL OF SCIENTIFIC PERFORMANCE BY AREA

GENERIC RISK ASSESSMENT – 1/2

| Area | Questions closed | | | Timeliness of adoption | | | Stock of questions | |
|---------------------------------------|------------------|------|-------------|------------------------|------|-------------|--------------------|-------------|
| | Actual 2023 | Plan | Actual 2022 | Actual 2023 | Plan | Actual 2022 | Actual 2023 | Actual 2022 |
| BIOHAW - total Generic Advice | 63 | 50 | 44 | 100% | 100% | 98% | 45 | 49 |
| Animal Health | 38 | 28 | 30 | 100% | 100% | 100% | 13 | 27 |
| Animal Welfare | 7 | 5 | - | 100% | 100% | - | 9 | 6 |
| Biological Hazards | 11 | 12 | 7 | 100% | 100% | 100% | 18 | 10 |
| Multinational Foodborne outbreaks | 4 | 2 | 4 | 100% | 100% | 100% | 0 | 0 |
| Annual Reports (AMR, TSE, Zoonoses) | 3 | 3 | 3 | 100% | 100% | 67% | 5 | 6 |
| FEEDCO - total Generic Advice | 13 | 13 | 9 | 87.5% | 100% | 46% | 11 | 19 |
| Contaminants Generic Advice | 12 | 13 | 9 | 85.7% | 100% | 46% | 8 | 18 |
| Feed additives Generic Advice | 1 | 0 | 0 | 100% | 100% | - | 3 | 1 |
| FIP - total Generic Advice | 0 | 0 | 5 | - | 100% | 52% | 2 | 1 |
| Food improvements agents | 0 | 0 | 4 | - | 100% | 40% | 2 | 1 |
| Food contact Materials Generic Advice | 0 | 0 | 1 | - | 100% | 100% | 0 | 0 |
| IDATA- total Generic Advice | 3 | 2 | 5 | 100% | 100% | 100% | 3 | 2 |
| Annual Reports | 3 | 2 | 5 | 100% | 100% | 100% | 3 | 2 |



DETAIL OF SCIENTIFIC PERFORMANCE BY AREA

GENERIC RISK ASSESSMENT – 2/2

| Area | Questions closed | | | Timeliness of adoption | | | Stock of questions | |
|--|------------------|------|-------------|------------------------|------|-------------|--------------------|-------------|
| | Actual 2023 | Plan | Actual 2022 | Actual 2023 | Plan | Actual 2022 | Actual 2023 | Actual 2022 |
| MESE - total Generic Advice | 2 | 2 | 0 | - | 100% | - | 6 | 2 |
| MESE General Scientific and Technical Assistance | 2 | 2 | 0 | - | 100% | - | 6 | 2 |
| NIF - total Generic Advice | 18 | 17 | 14 | 91.7% | 100% | 100% | 31 | 21 |
| Nutrition Generic Advice | 10 | 7 | 4 | 90% | 100% | 100% | 22 | 18 |
| GMO Generic Advice | 8 | 10 | 10 | 100% | 100% | 100% | 9 | 3 |
| PLANTS - total Generic Advice | 114 | 100 | 91 | 93.1% | 100% | 70.6% | 121 | 91 |
| Plant Health | 114 | 100 | 91 | 93.1% | 100% | 70.6% | 121 | 91 |
| PREV - total Generic Advice | 75 | 73 | 70 | 45.7% | 100% | 88% | 50 | 76 |
| Preparation of the annual CCPR meeting | 37 | 40 | 42 | 0.0% | 100% | 100% | 6 | 1 |
| Assessment of the risks related to MRLs | 19 | 20 | 5 | 94.7% | 100% | 100% | 2 | 20 |
| Assessment of existing MRLs | 8 | 4 | 16 | 100% | 90% | - | 32 | 39 |
| Approval of active substances | 5 | 5 | 7 | 100% | 100% | 100% | 5 | 6 |
| PREV Guidance documents | 6 | 4 | 0 | 100% | 100% | - | 5 | 10 |

