

Management Board
25 March 2021



Highlights from 102nd SC Plenary

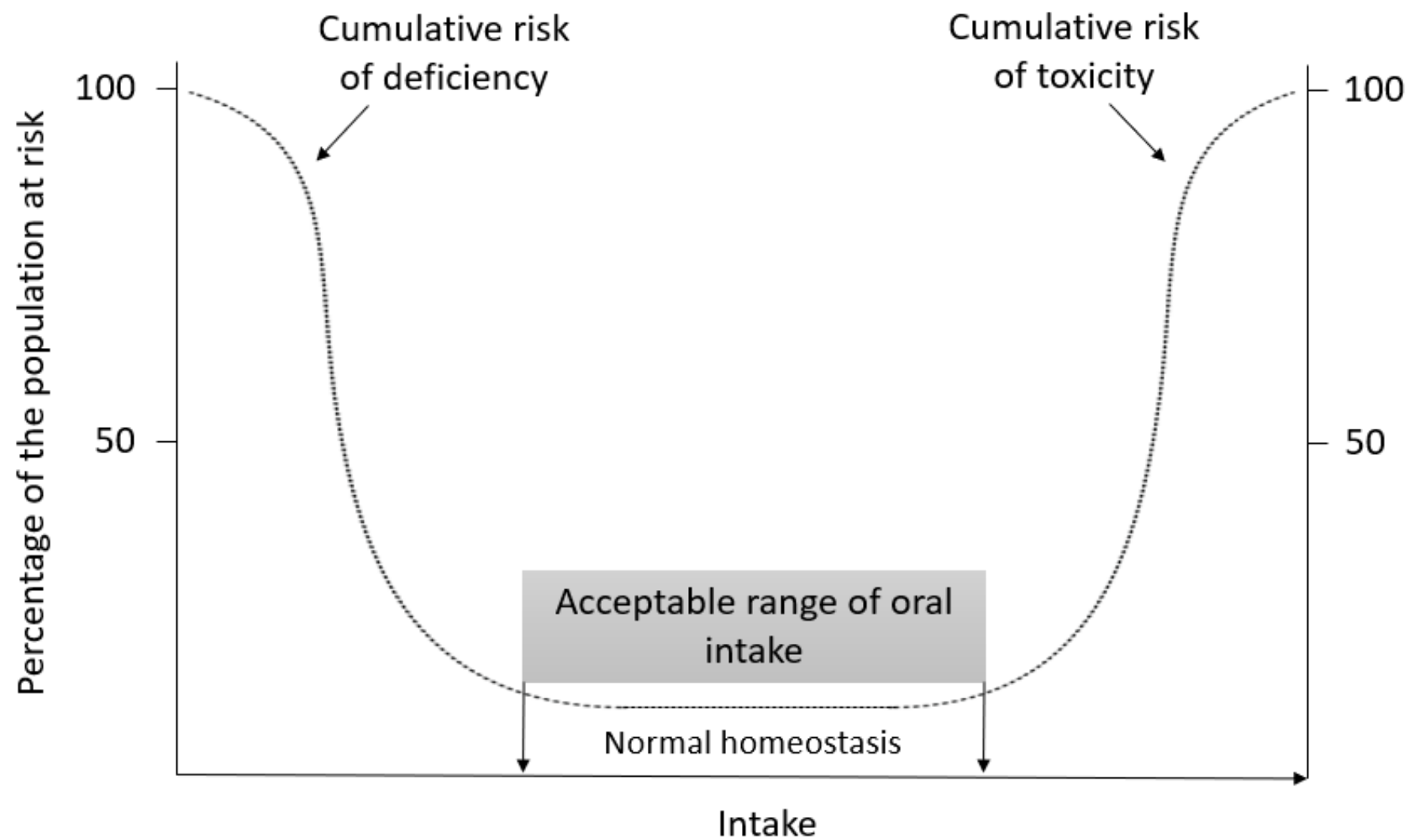
(17-18 February 2021)

Trusted science for safe food

Statement on Health Based Guidance Values (HBGV) of regulated products that are also nutrients

A science-based recommendation for the maximum (oral) exposure to a substance that is not expected to result in an appreciable health risk, taking into account current safety data, uncertainties in these data, and the likely duration of consumption

WG coordinator: José Tarazona



A theoretical representation of the percentage of the population at risk of deficiency and toxicity effects according to the dietary intake of a nutrient, adapted from WHO/IPCS (2002).

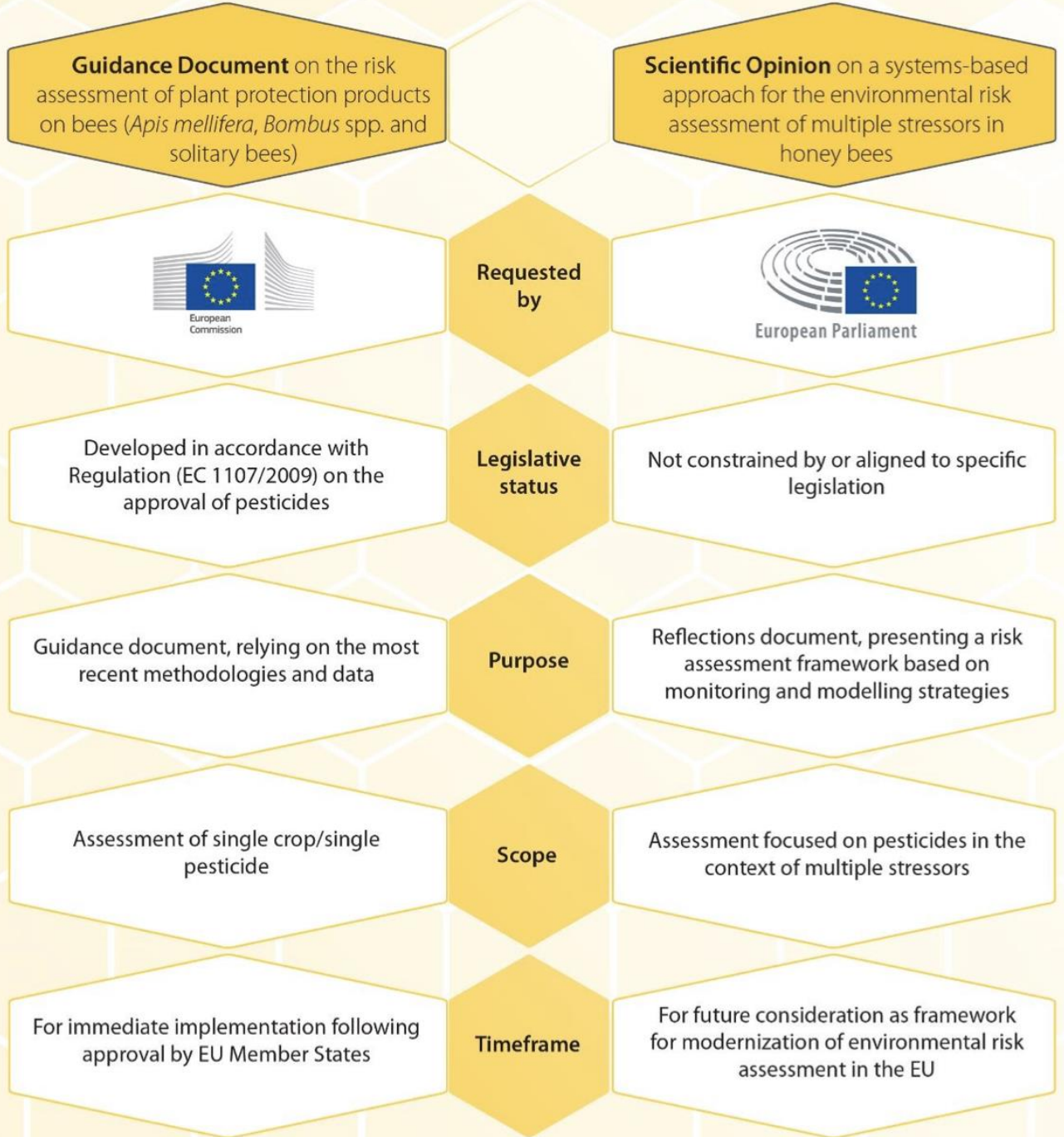


European Parliament

MUST-B scientific opinion

EFSA contact: Agnès Rortais







EDITORIAL

APPROVED: 21 December 2020
doi: 10.2903/j.efsa.2021.e190101

EFSA is working to protect bees and shape the future of environmental risk assessment

Simon J More, Domenica Auteri, Agnès Rortais and Steve Pagani



#efsa4bees

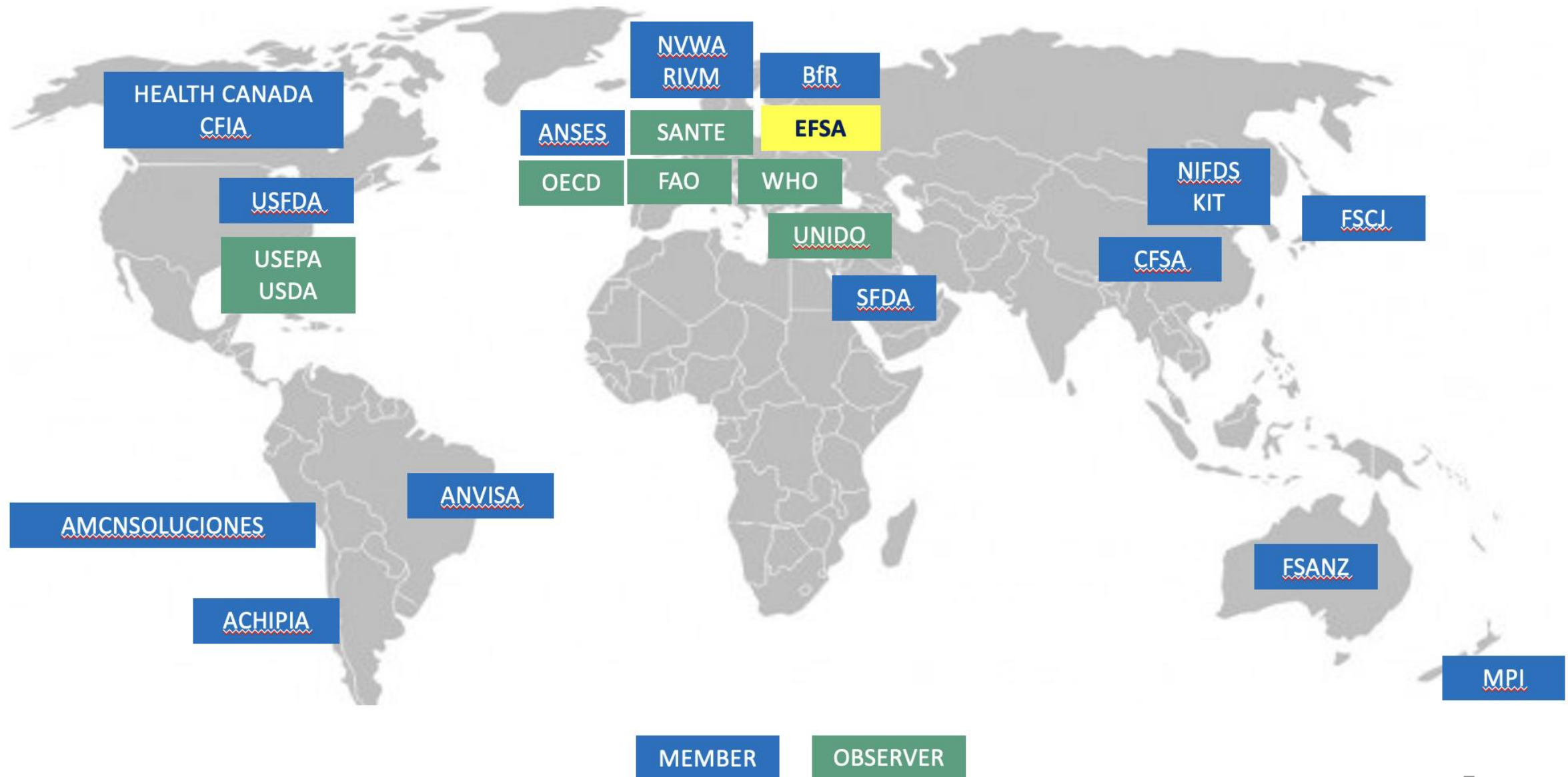
Bulletin N° 2 ENVI COMMITTEE MANDATE TO EFSA ON BEE HEALTH

ILMERAC

International Liaison
group on Methods for
Risk Assessment of
Chemicals in food



EFSA contact: Djien Liem & Justyna Slodek Wahlström



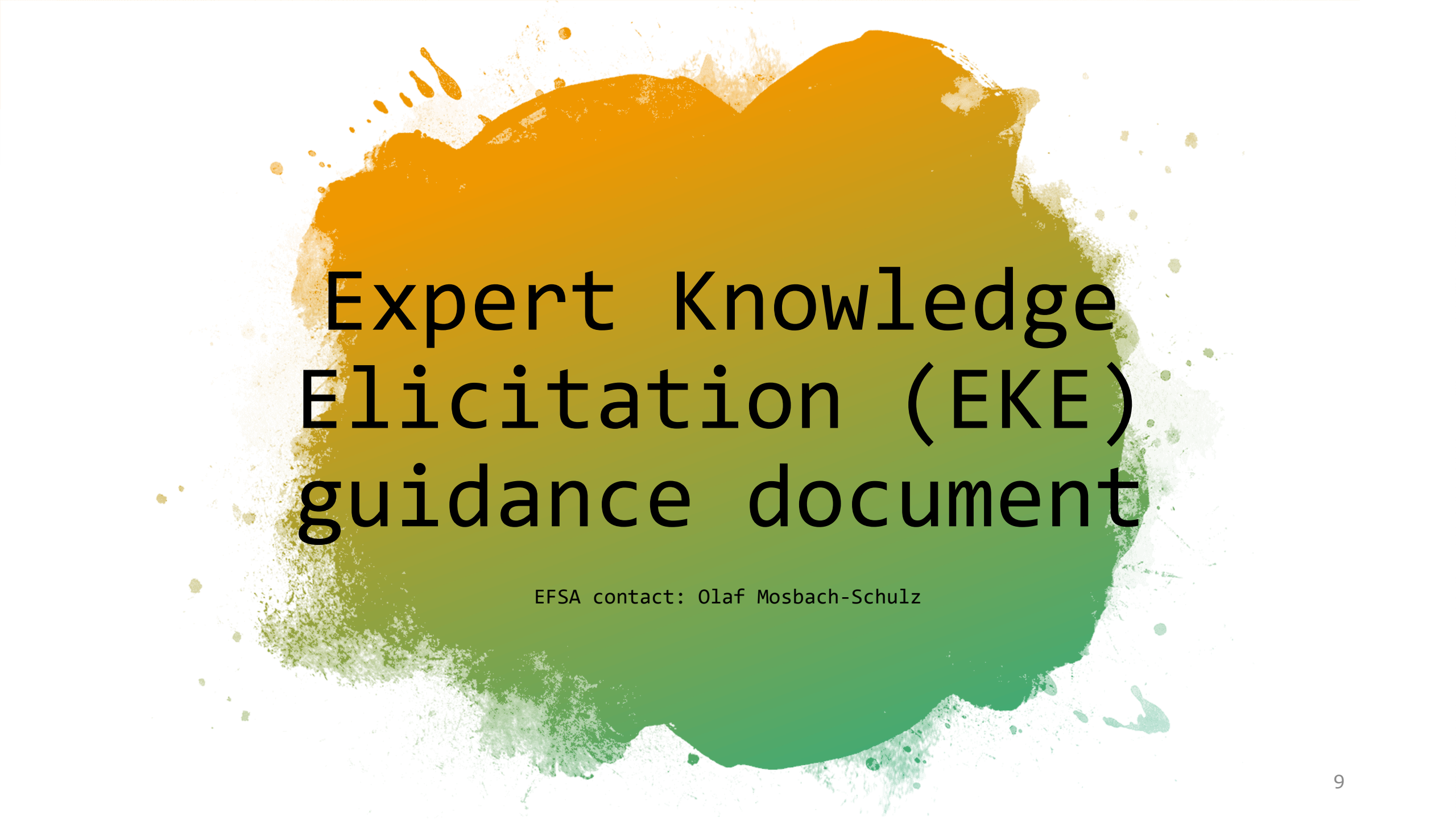
Activities 2018-2020

January 2018
until
June 2020

- Topics of common interest including:
EHC 240 updates, EFSA SC guidance (NMDR, HBGV, nano, epi), EFSA Future of Chemical RA, OECD DNT, New Approach Methodologies (2x), botanicals, chemical mixtures
- Notifications on documents for public consultation

November
2020

- Feedback, evaluation of added value
- Continuation for a further 3 years, with EFSA providing Technical Secretariat?
- Suggestions for improvements

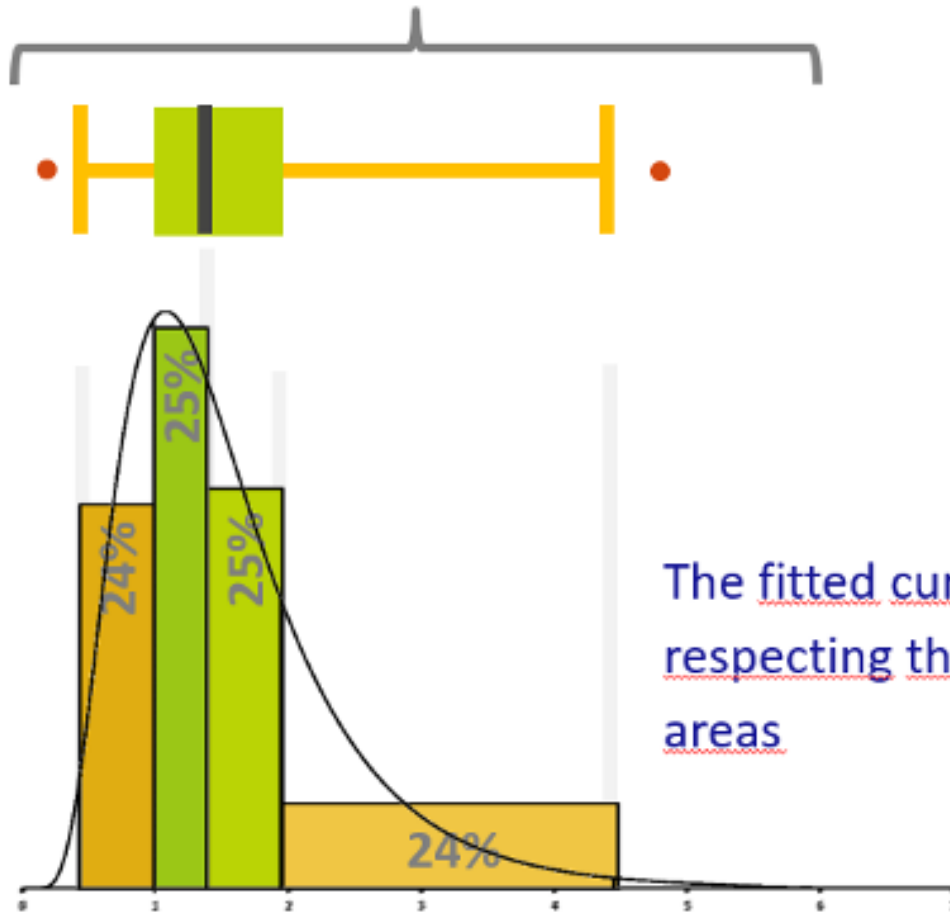


Expert Knowledge Elicitation (EKE) guidance document

EFSA contact: Olaf Mosbach-Schulz

- *What is the average proportion of honeybee colonies, bumble bee colonies, or solitary bee nests which will actively collecting pollen from tobacco plants, when placed next to production fields in Europe during the life stage, when pollen is produced (peak flowering bloom: BBCH Stage 65-67)?*
- *What is the proportion of consignments of cereals and their by-products for pig feeding and for export to non-affected areas of Europe, that will contain the ASF virus at place of primary production (harvest) in affected areas of Europe in the coming 12 months?*

The full distribution



The fitted curve
respecting the
areas



European Food Safety Authority

EFSA Journal 2014;12(6):3734

GUIDANCE OF EFSA

Guidance on Expert Knowledge Elicitation in Food and Feed Safety Risk Assessment¹

European Food Safety Authority^{2,3}

European Food Safety Authority (EFSA), Parma, Italy