

# Review of Regulation 1/2005

**Keith Meldrum**  
**Veterinary Consultant**  
**World Horse Welfare**

# Who are we?

- UK based charity
- Dedicated to the welfare of equines world wide
  - Opposed to the long distance transport of equines intended for slaughter in Europe



1927 - Founding Issue



83 Years of Campaigning

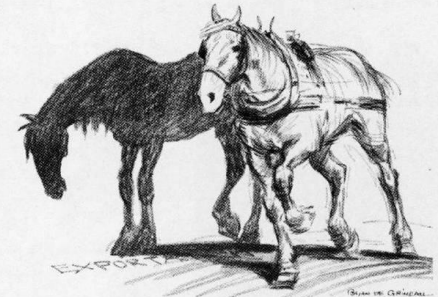


**WorldHorseWelfare**  
turn your passion into action

## THE SHADOW BEHIND THE HORSE

### AN APPEAL TO BRITISH FAIR PLAY

Do you know that British horses are still being exported to the Continent to be slaughtered for food, but that in many cases they are bought by dealers in the open market for further work and suffer a fate worse than death, eking out a pitiable existence—ill-fed and cruelly treated—till death comes at last as a merciful release in some foreign slaughter-house?



THE SHADOW BEHIND THE HORSE

How would YOU feel if such a fate were to befall one of your horses? And what do you suppose a foreigner thinks of us who boast of our good sportsmanship and sell our old horses into slavery abroad?

Will you not help to end this terrible reproach?

Send your donation or write for particulars to:—

**THE INTERNATIONAL LEAGUE TO PREVENT THE  
EXPORT OF HORSES FOR BUTCHERY**

(International League for Horses),

4, BLOOMSBURY SQUARE,  
LONDON, W.C.1

It was posters and leaflets like this that the young distributed in the 1930s

## FOR CONSIDERATION

- World Horse Welfare transport study
- Evidence from the field
- Injuries
- Immuno-suppression and disease
- Space allowances



**WorldHorseWelfare**  
turn your passion into action

# Health and Welfare of Horses Transported for Slaughter within the European Union

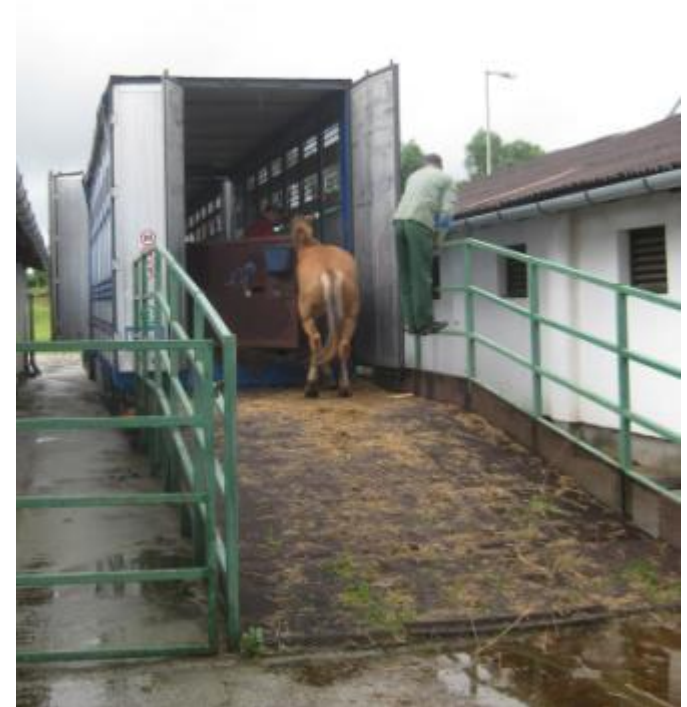
**Dr David Marlin**

Associate Dean for Research, Hartpury College,  
Gloucester, UK



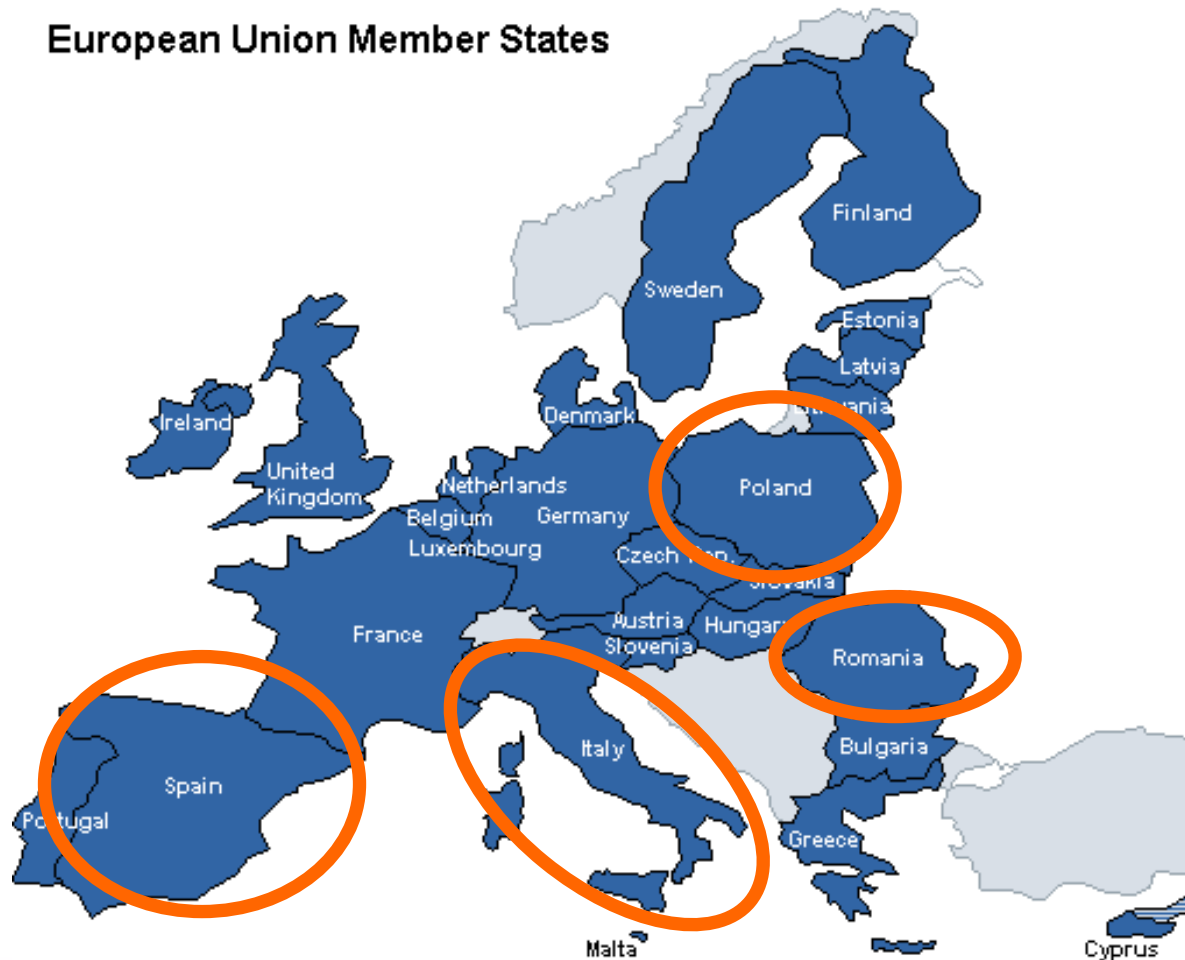
# Evidence of compromised welfare in horses transported for slaughter within the European Union

- RSPCA & World Horse Welfare (ILPH) 1999
- European Commission 2000
- World Horse Welfare 2002 & 2006
- Animals Angels (ongoing)
- Dossier of Evidence 2008
- World Horse Welfare field work 2001 - to date



# To investigate the health and welfare of horses being transported long distances for slaughter within the EU in accordance with EU Council Regulation (EC) 1/2005 on the Welfare of Animals during Transport

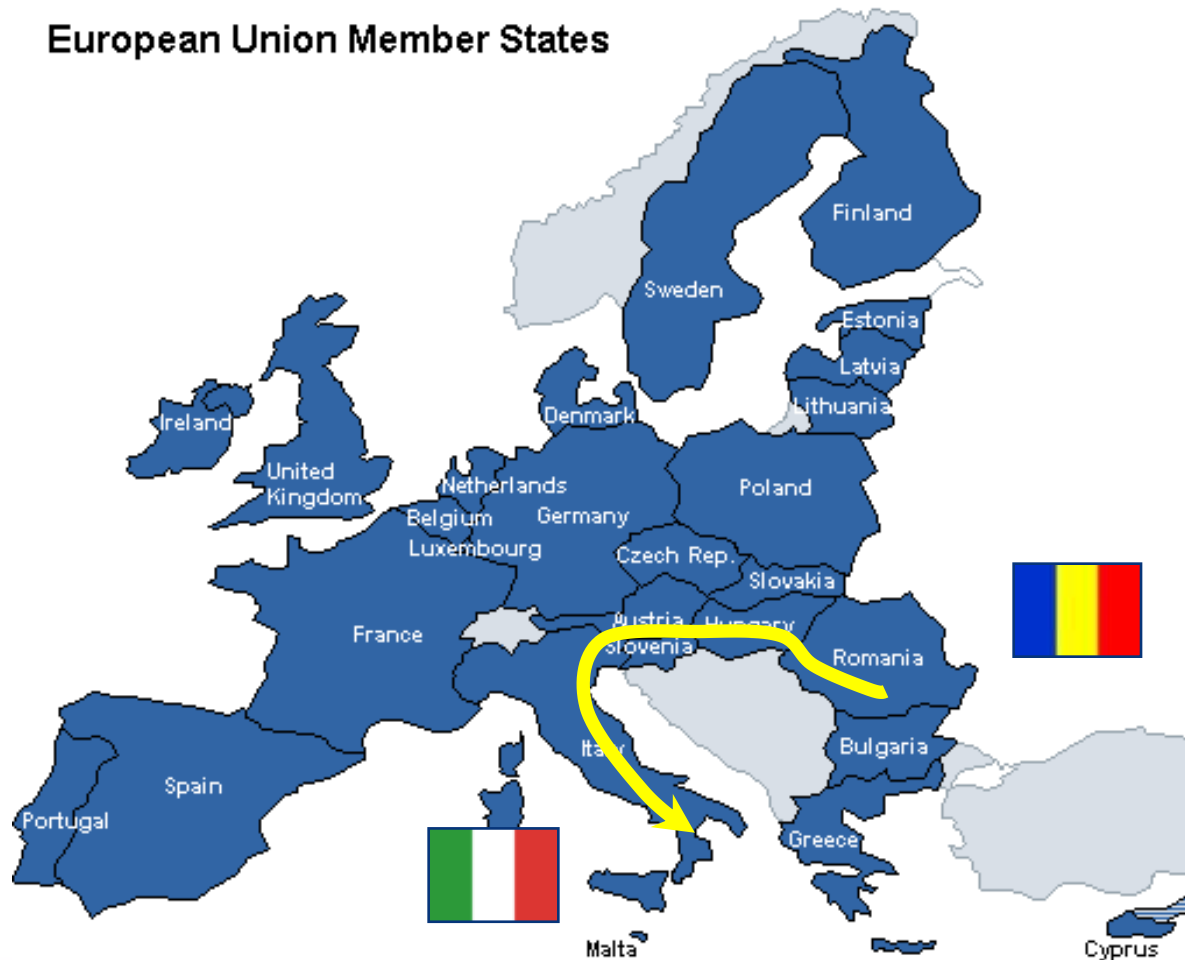
European Union Member States





# To investigate the health and welfare of horses being transported long distances for slaughter within the EU in accordance with EU Council Regulation (EC) 1/2005 on the Welfare of Animals during Transport

## European Union Member States





# Data collected by 4 trained veterinary surgeons





**WorldHorseWelfare**  
turn your passion into action


# Details of shipments (all horses)

- Location
- Date
- Time
- Weather
- Duration of loading/unloading
- Horse handling
- Transport vehicle
- Number of horses in shipment

ALPH TRANSPORT PROJECT 2007 RECORD FORM										SHIPMENT REF No.		
ADDRESS:										COLLECT / STAGING / SLAUGHTER		
DATE:			TIME:			TIME OF OBS:						
WEATHER			Temperature (°C):			Humidity (NRH):						
TIME LOADING COMMENCED:					TIME LOADING COMPLETED:							
HORSE HANDLING												
Was there resistance to any horses to loading/unloading?										<input type="checkbox"/> YES <input type="checkbox"/> NO		
Were horses haltered or tied up?										<input type="checkbox"/> YES <input type="checkbox"/> NO		
Was there a veterinary surgeon present at loading/unloading?										<input type="checkbox"/> YES <input type="checkbox"/> NO		
If yes, name of veterinary surgeon:												
Overall, how were the horses handled?										<input type="checkbox"/> MISHANDLED <input type="checkbox"/> APPROPRIATELY HANDLED		
VEHICLE AND SHIPMENT DETAILS												
N.B. 1) Delete wheels as appropriate 2) Mark on approx. pen positions and number of horses per pen as viewed from above												
TOTAL NUMBER IN SHIPMENT:										<input type="checkbox"/> COUNTED <input type="checkbox"/> ESTIMATED		
OTHER COMMENTS OR OBSERVATIONS												
<hr/> <hr/> <hr/> <hr/> <hr/>												

# Details of individual horses

- Horse ID
- Sex
- Age
- Height
- BCS
- External injuries
- Demeanour
- Gait
- Access to feed/water
- Clinical examination
- Fitness for transport

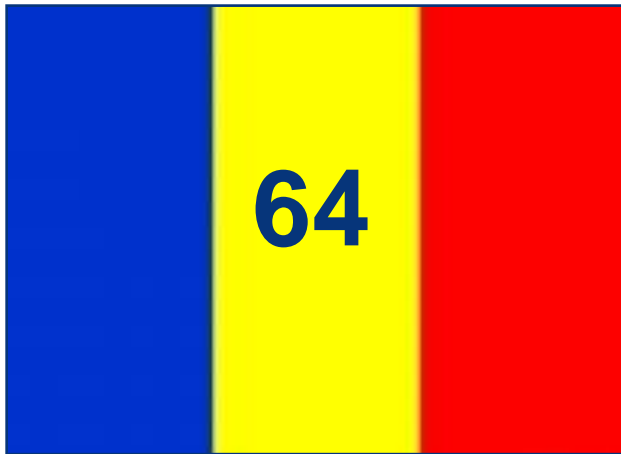
ILPH TRANSPORT PROJECT 2007 RECORD FORM		Shipment Ref No: _____	
Address: _____		Date: _____	Time of Obs: _____
<b>ANIMAL DETAILS</b>			
Exam Number: _____		Location of obs: On Vehicle / Unloading / In Pens	
Passport No: _____		Microchip No: _____	
Sex: M / F / G	Age: _____	Passport / Health Cert	Estimated age: _____ Teeth / Visual
Wither height: Actual / Estimated		Body condition score: 1 2 3 4 5	
<b>External Injuries</b> 			
<b>ANNOTATION</b> Mild: M; Moderate: Mo; Severe: S    Route: A; Chronic: C    Cuts: _____ Bruising: _____			
Demeanour: Normal / Quiet / Excited / Depressed / Exhausted / Dead			
Observed Moving: Y / N		Head Posture: Low / Normal / High	
Gait: Sound / Lame / Ataxic / Recumbent		Ftame: Mild / Moderate / Severe	
Food available: Y / N		Eating: Y / N    Water available: Y / N    Drinking: Y / N	
Cough	Yes	No	Mucous membranes: Norm / Congested / Pale
Nasal Discharge			Skin Pinch: Norm / Slow / Very Slow
Sweating			Skin Condition: Norm / Inflamed / Photosens.
Diarhoea			Respiratory rate: Norm / Elevated / Decreased
Abdominal discomfort			
Was this horse fit to transport? Yes / No ..... If No, please explain why below			
OTHER OBSERVATIONS			



- Foraging
- Drinking
- Defaecation
- Urination
- Vocalisation
- Threat
- Aggression
- Fear Pose
- Kick objects
- Pawing
- Grooming
- Mounting
- Mutilation

12

# Numbers of shipments



**Romania**



**Italy**



# Numbers of horses



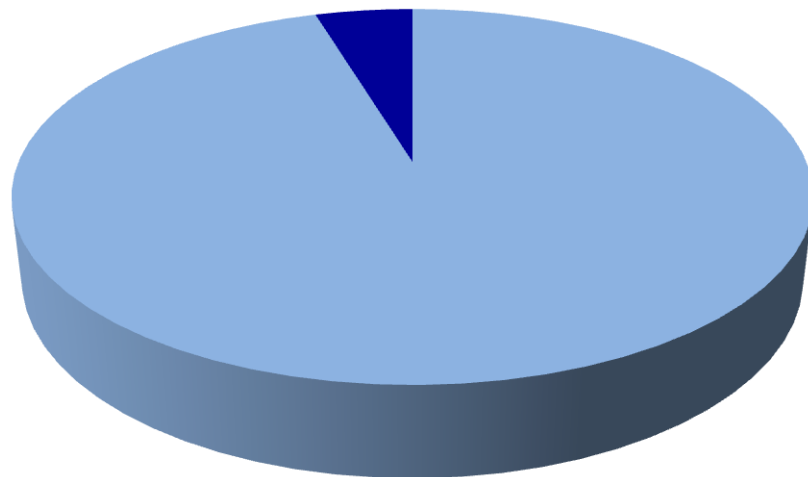
**WorldHorseWelfare**  
turn your passion into action



# Destination & Origin



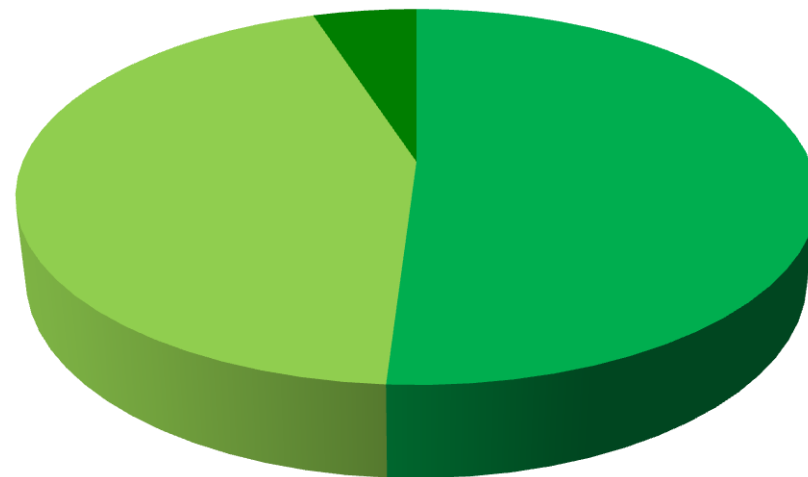
**Destination**  
(horses leaving Romania)



■ Italy ■ Other



**Origin**  
(horses arriving in Italy)



■ Poland ■ Romania ■ Other



# Body condition



**WorldHorseWelfare**  
turn your passion into action



**1 out of every 4 horses arriving in Italy  
was severely obese (BCS >5 of 5)**



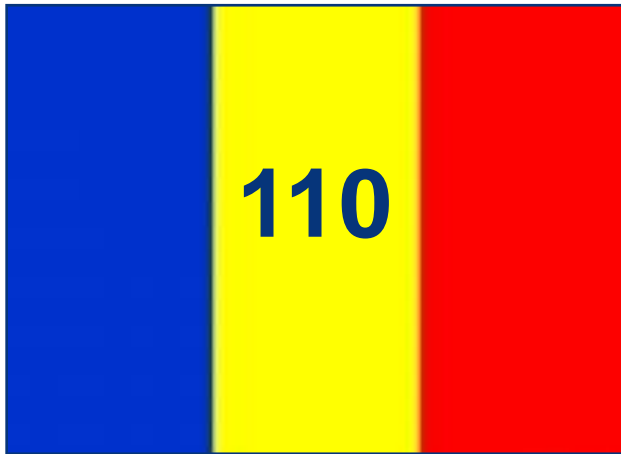
**WorldHorseWelfare**  
turn your passion into action



# Lameness



**WorldHorseWelfare**  
turn your passion into action





# General health

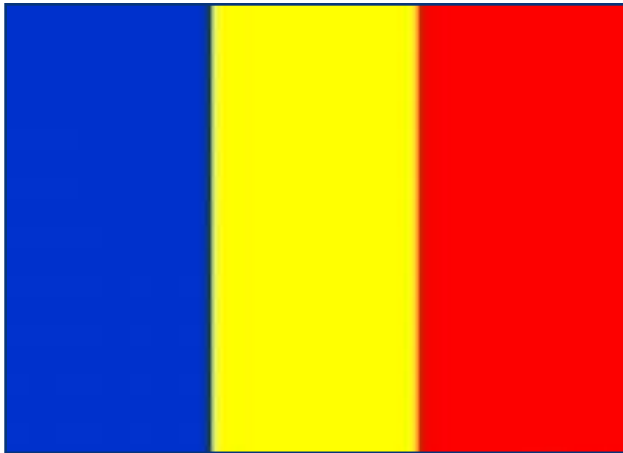


Nasal discharge and congested mucous membranes were twice as common after transport

# Injuries



**WorldHorseWelfare**  
turn your passion into action



Half of the horses seen in Romania had long-standing injuries

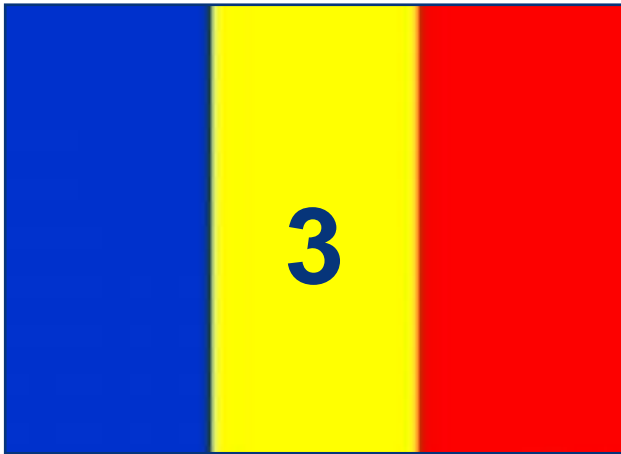


1 in 4 of the horses arriving in Italy had very recent injuries

# Shipments compliant with EU legislation



**WorldHorseWelfare**  
turn your passion into action





**WorldHorseWelfare**  
turn your passion into action

# Discussion (1)

- Poor initial health and welfare in Romania
- Health and welfare significantly worse after transport







**WorldHorseWelfare**  
turn your passion into action

## Discussion (2)

- High frequency of external injuries and lack of feed and water provision
- Increased frequency of clinical signs potentially associated with infectious disease





**WorldHorseWelfare**  
turn your passion into action

## Discussion (3)

- Most journeys were not compliant with EU Council Regulation (EC) 1/2005 on the Welfare of Animals during Transport
- Need for robust and uniform enforcement of 1/2005 throughout whole of the EU



# INJURIES

Evidence from Slovenia (Stefancic and Martin in 2005) that horses  
16.5 times more susceptible to  
injuries than cattle

# World Horse Welfare's latest findings

- Latest field investigation conducted in September 2010
- Focused on horses unloaded for rest at a control post on the Italian border
- Statistical and observational data were collected on injuries, disease, behaviour and demographics
- **5** shipments (**95** horses in total) were seen at the control post
- (**2** shipments were seen in transit but did not stop at the control post)





**WorldHorseWelfare**  
turn your passion into action

# Disease

- **All shipments contained horses showing visible signs of disease**
- **93%** of horses showed visible signs of disease
- **71%** of horses had nasal discharge
- **79%** of horses had ocular discharge
- **37%** of horses had abnormal respiration





**WorldHorseWelfare**  
turn your passion into action

# Injury

- **95%** of horses had some form of acute injury
- **24%** of horses had at least one acute injury involving subcutaneous or deeper tissues
- **74%** of horses showed evidence of rubbing from the vehicle due to lack of space and inappropriate material



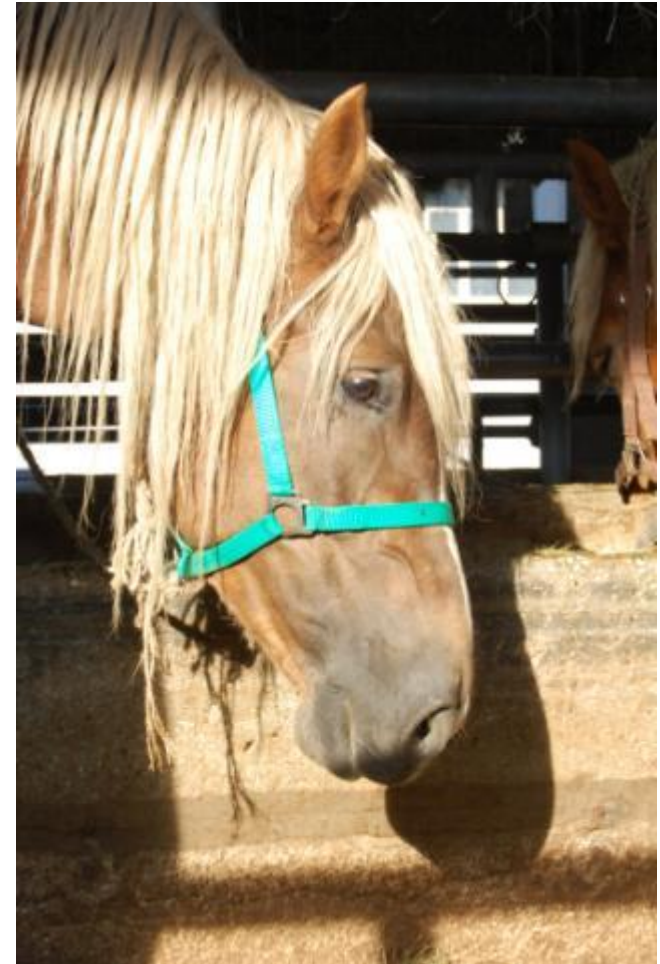




**WorldHorseWelfare**  
turn your passion into action

# Exhaustion

- Horses were observed after 24 hours of travel
- Most were only half-way through their journey
- **All horses showed signs of exhaustion**



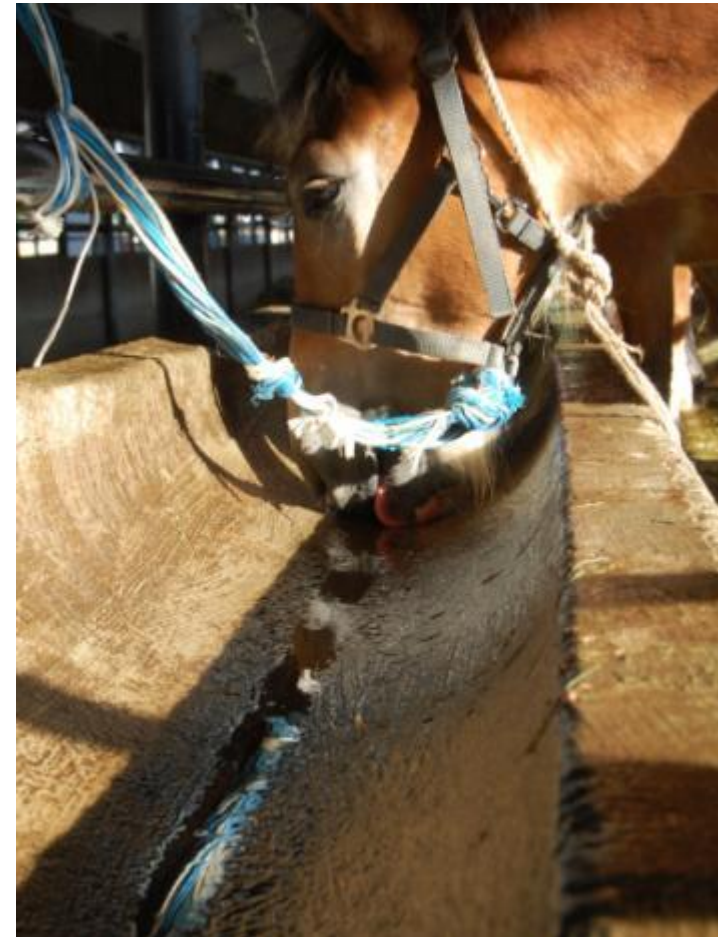




**WorldHorseWelfare**  
turn your passion into action

# Dehydration

- **All** horses showed signs of extreme thirst and dehydration
- **All** horses showed signs of sweating
- Horses drank until water trough was empty





**WorldHorseWelfare**  
turn your passion into action

# Behaviour

- A pilot behavioural study was carried out on one shipment (18 horses)
- **All horses showed abnormal behaviour or stance**



# Problems caused by limited space

- Increased risk of injury
- Discomfort and pain
- Reduced ability to balance
- Increased fatigue
- Increased risk of respiratory disease
- Stress
- Increased incidence of threatening / aggressive behaviour
- Insufficient air flow in vehicle





**WorldHorseWelfare**  
turn your passion into action

# Our research into space requirements

- Measurements taken of adult horses and ponies in the UK:
  - 20 ponies, 10 horses and 6 heavy horses
  - Various breeds and types
- Results show a huge variation in body dimensions (withers height, length, width) and bodyweight between animals
- Poor correlation between bodyweight and most body dimensions







**WorldHorseWelfare**  
turn your passion into action

## Conclusions to date

- Most vehicles used to transport horses for slaughter have an internal width of around 2.3m
- **BUT** 88% of horses measured were  $\geq 2.3\text{m}$  in length
- Current Regulation states all adult horses should have a minimum  $1.75\text{m}^2$  ( $0.7\text{m} \times 2.5\text{m}$ )
- One size fits all approach is not appropriate for horses due to huge variation in body dimensions





**WorldHorseWelfare**  
turn your passion into action

# Estimating space requirements

- Space requirements cannot be estimated from bodyweight alone
- We are considering what compartment dimensions are appropriate



# Immuno-suppression

Evidence from Marlin(2001) and Stull(2008) that equidae become immuno-compromised after 12 hours of road transport.

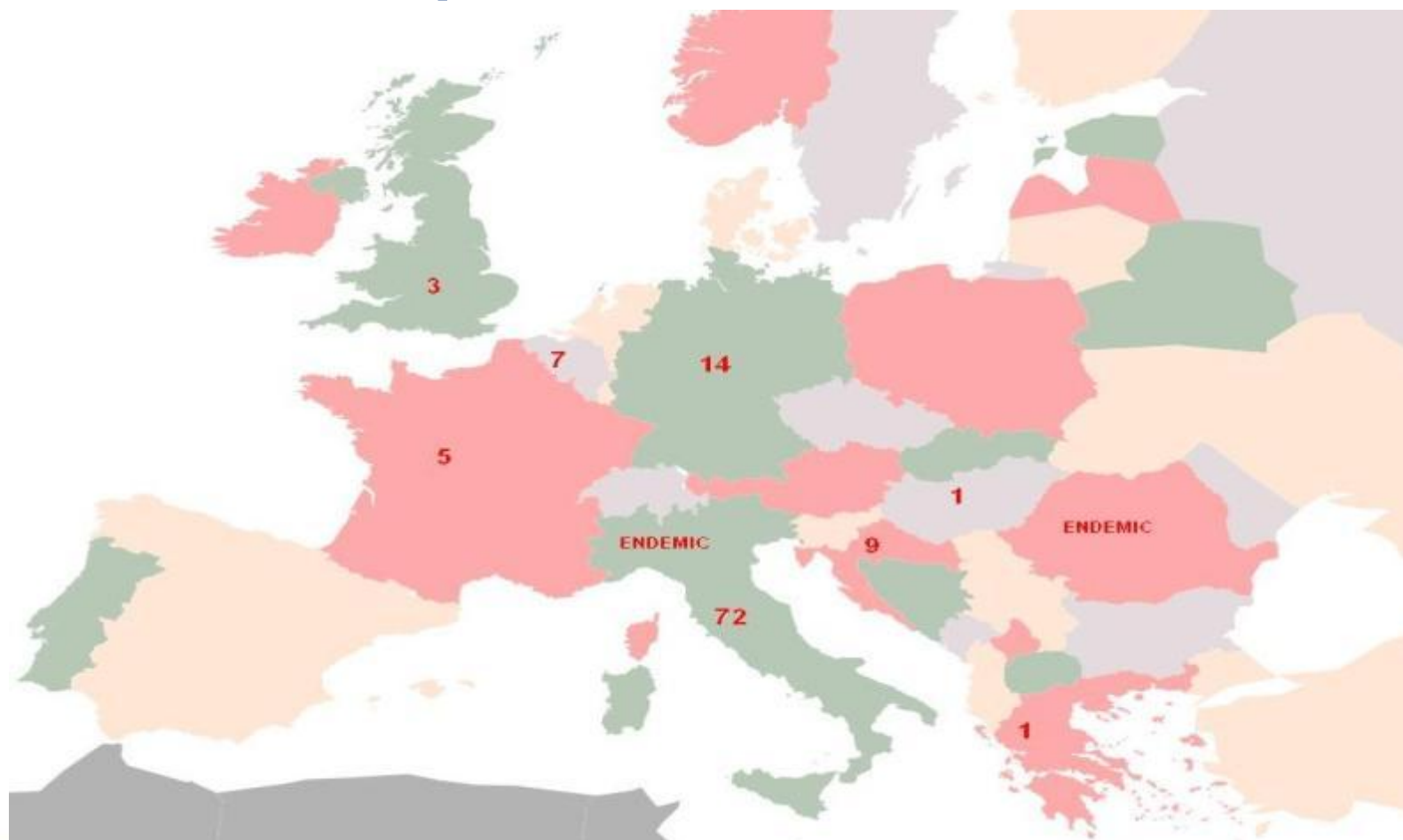
World Horse Welfare have clear evidence that disease symptoms are increasingly observed during long distance transport





**WorldHorseWelfare**  
turn your passion into action

## EIA Outbreaks Reported in 2010





**WorldHorseWelfare**  
turn your passion into action

# CONCLUSIONS

- Clear need for changes to current legislation to reduce level of injuries, exhaustion and dehydration and to limit disease spread

as well as

Robust enforcement of existing legislation



# Thank you for listening