

4 September 2019

The SIGMA project

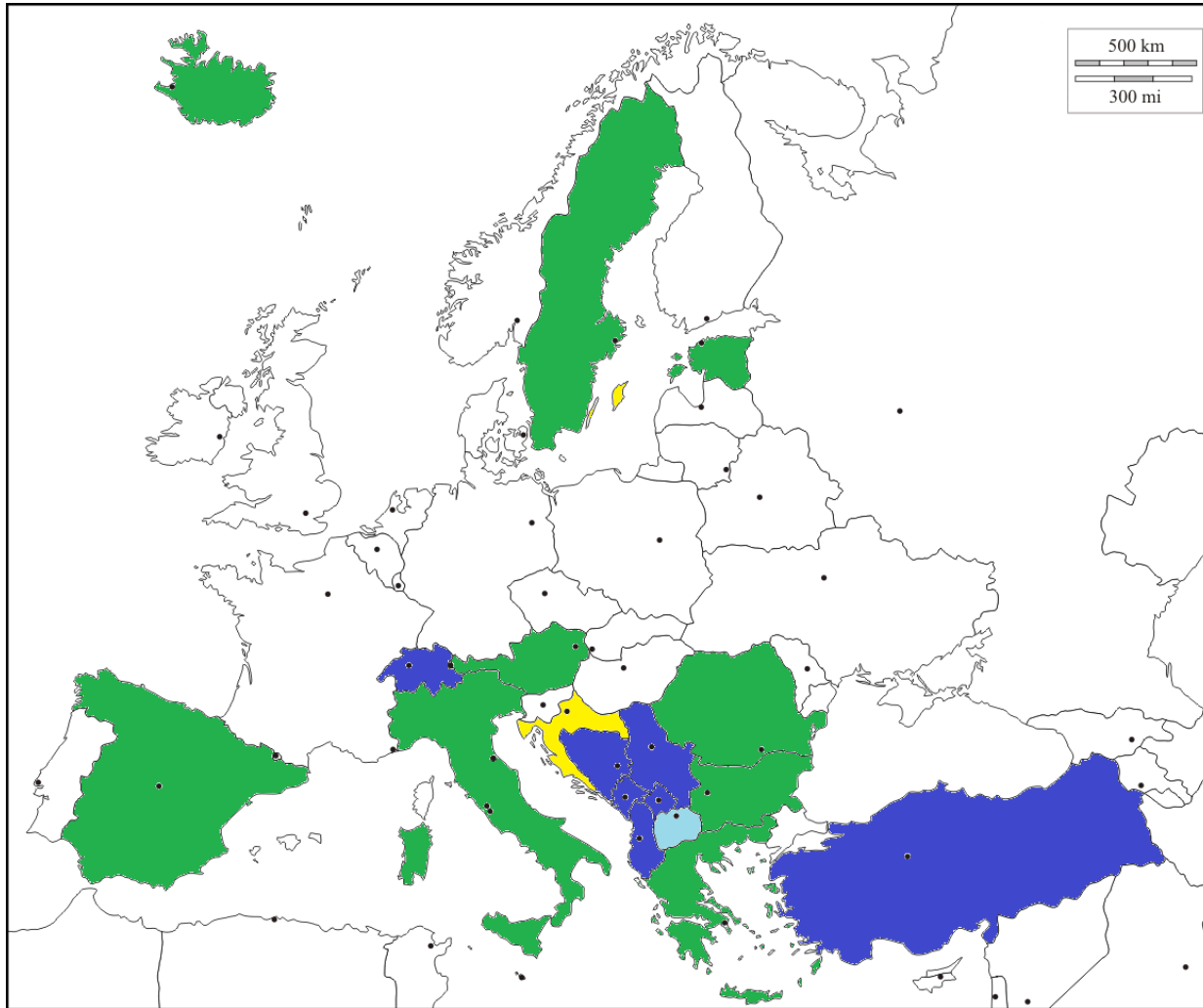
Where we are and what's for the FPs ?

Gabriele Zancanaro

Scientific Officer
SIGMA Project Manager

Trusted science for safe food

Engaged Countries

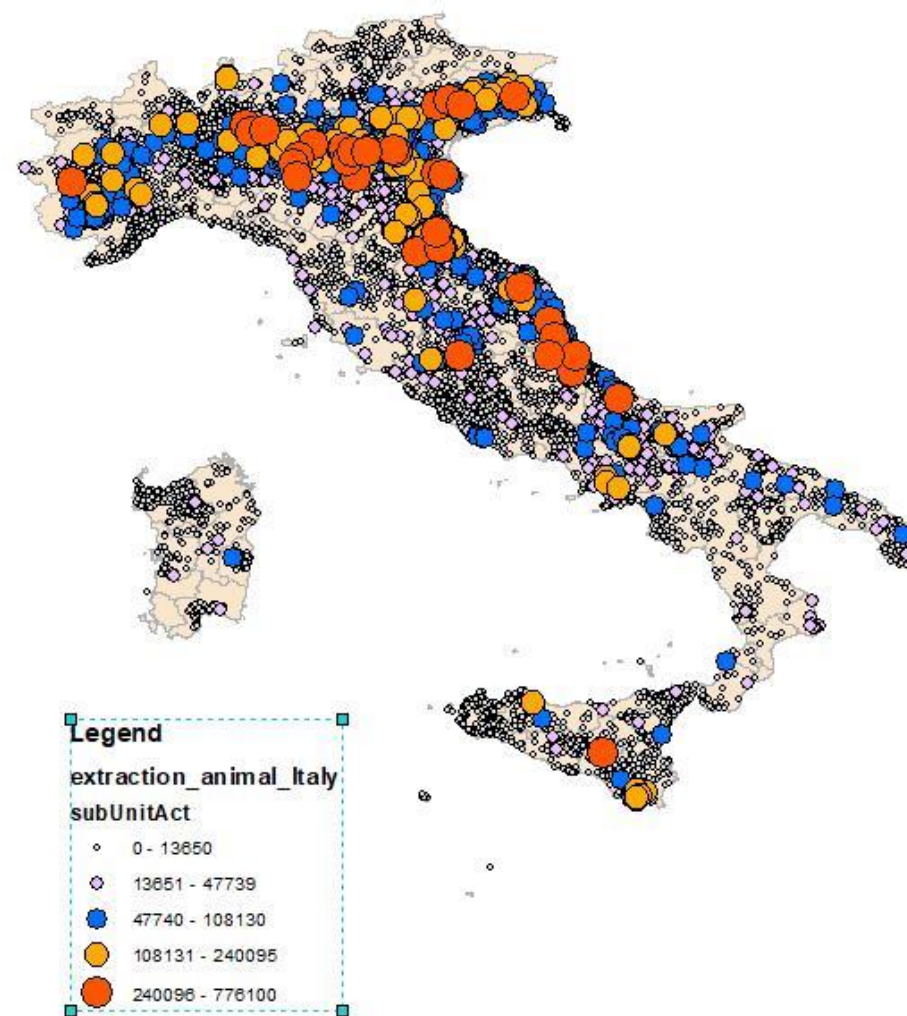


- Austria
- Bulgaria
- (Croatia)
- Estonia
- Greece
- Italy
- Romania
- Spain
- Sweden
- IPA countries
(North Macedonia)

- SIGMA Animal Disease Data Model: A comprehensive approach for the collection of standardised data on animal diseases (Jan 2019)
- (Ext Report) Overview of data analysis and reporting tools in the context of the SIGMA project (Jul 2019)
- (Ext Report) Scoping document on the integration of ASF data collection, analysis and reporting (Jul 2019)
- **Test on automated data submission using SIGMA (Italian poultry population data)**

- (Ext Report) Data structure and flows in 5 countries
(Oct 2019)
- (Ext Report) Plan and design of the implementation of
the SIGMA framework (Oct 2019)
- **Test on automated data submission using SIGMA
(Italian poultry population data)**

Publications and Outcomes (3)



- **Legal aspects**

- Remember: xy coordinates are protected (new GDPR)
- *Ex ante* clearance (let's be proactive in case of a PAD)

- **Contractual framework**

- Extension to the IPA countries

- **Online version @**
<https://efsa.maps.arcgis.com/apps/MapSeries/index.html?appid=4ad76712f64c488bb81820cd3f839ddf>
- **Missing countries:**
 - UK; France; Germany; Luxembourg; Slovenia; Hungary; Romania
- **Need for keeping the CCards relevant and up to date**

- **Internal Communication / Coordination with relevant national parties / Connection with EFSA**
 - Promotion (NWK mtg 2019)
 - Collection of “but” and “if”
 - Collection of clarifications
 - Feedback for improvement

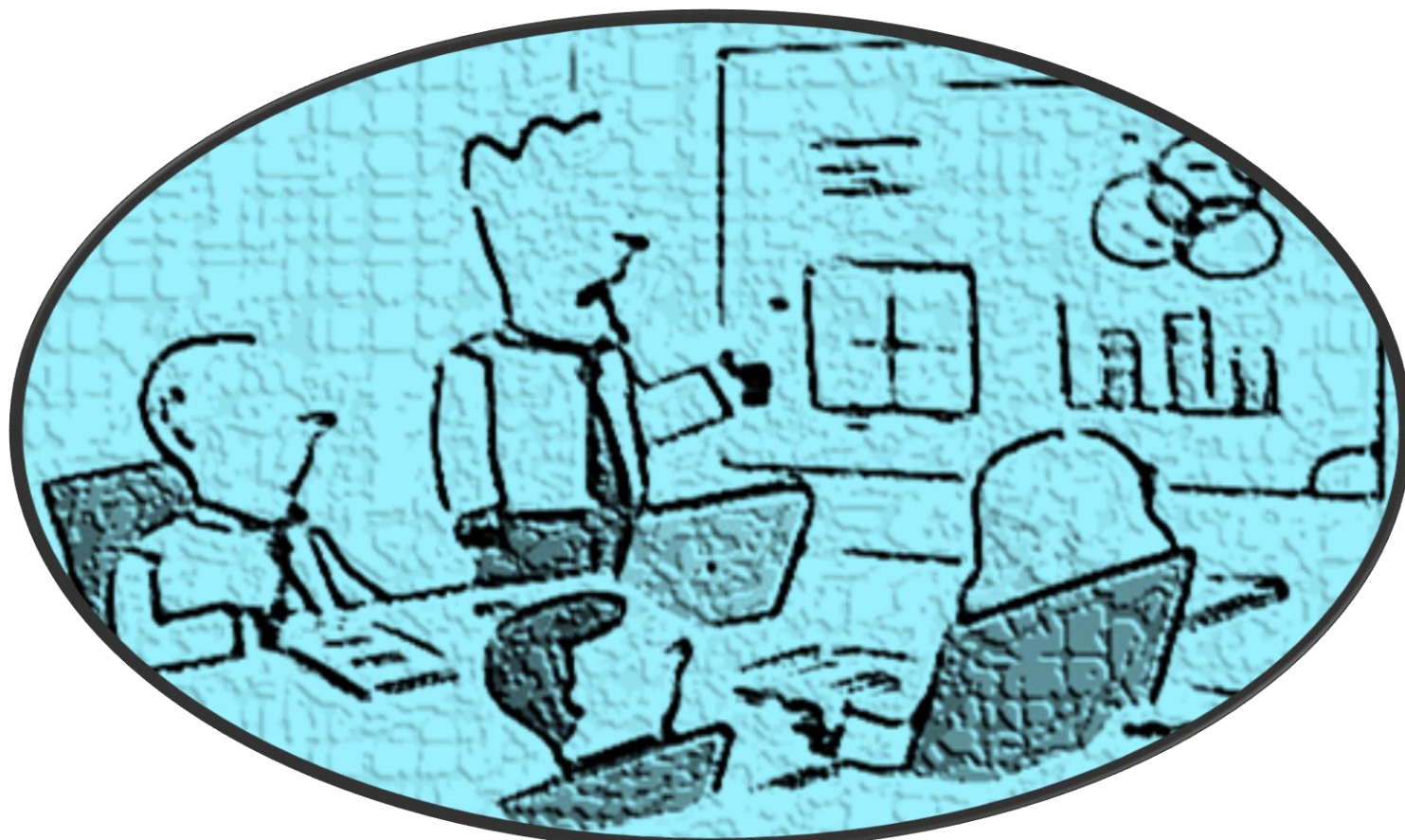
- **Country Cards**

- Check for consistency
- Flag any change
- Keep them relevant and up to date
- Feedback to EFSA

- **Support to the SIGMA consortium**

- Information needed
- Advising on how to proceed

Thanks for your attention!



**Let's avoid
this...**

Join SIGMA

“After analyzing all your data, I think we can safely say that none of it is useful.”



Subscribe to

www.efsa.europa.eu/en/news/newsletters
www.efsa.europa.eu/en/rss



Engage with careers

www.efsa.europa.eu/en/engage/careers



Follow us on Twitter

@efsa_eu
@plants_efsa
@methods_efsa