



SIGMA – a comprehensive animal disease data collection approach

Because data matter!

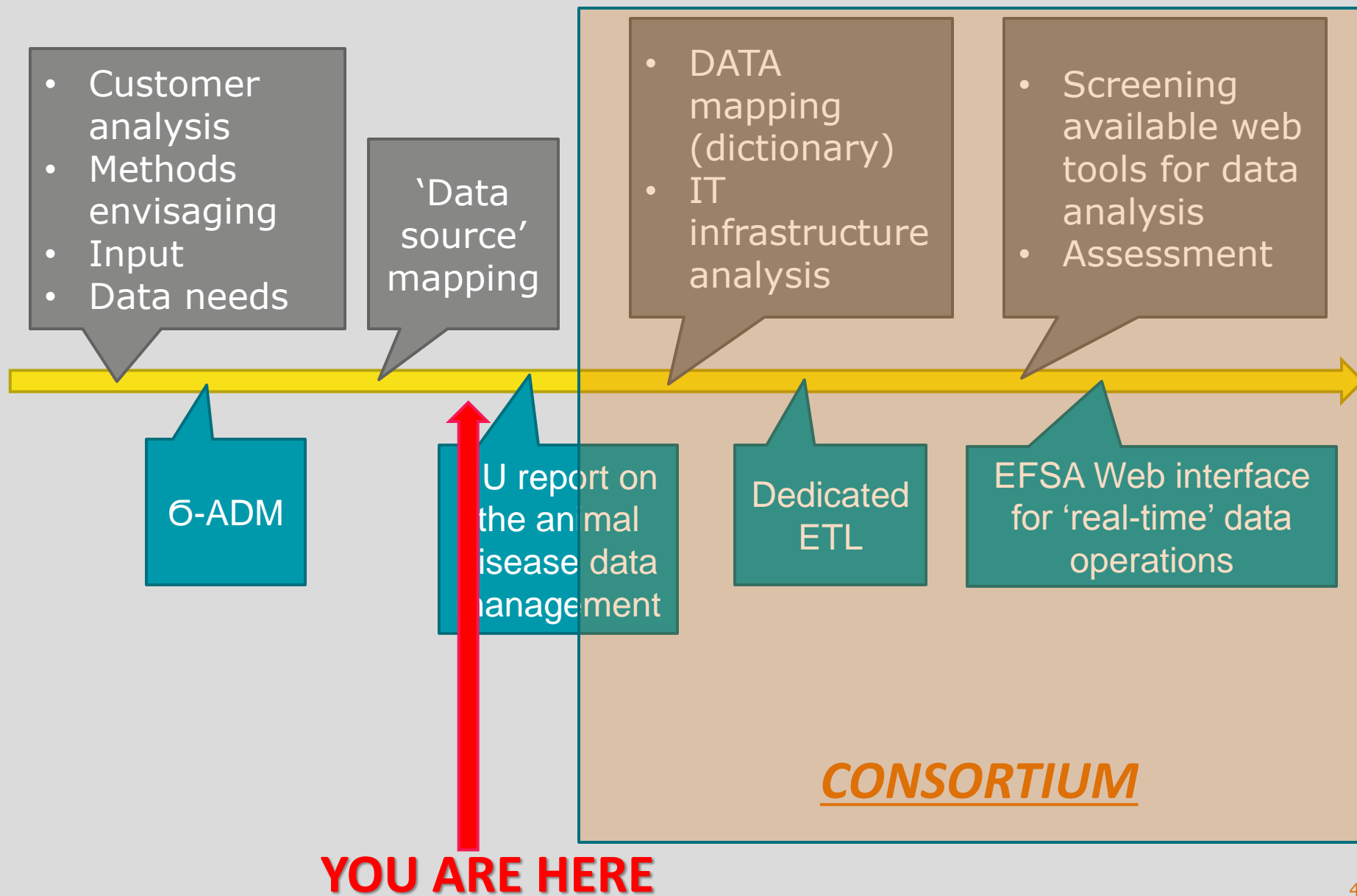
**Focal Points Meeting
17 Oct 2018**

Where we are...





Roadmap



The SIGMA consortium

WHO

the partners

- **IZS Abruzzo e Molise “G. Caporale” (LEAD)**
- **Friedrich Loeffler Institut**
- **SVA (Swedish National Vet Institute)**
- **Bulgarian Food Safety Agency**
- **Institute of Vet Med and Animal Sciences, Estonian University of Life Sciences**

WHAT

the tasks

- **Contribution to the ‘Data Source’ mapping**
- **DATA mapping**
- **Screening, Inventory and Assessment of the available Web Tools for data analysis and reporting**

CLEAR DEFINITIONS MATTER



ONTOLOGIE



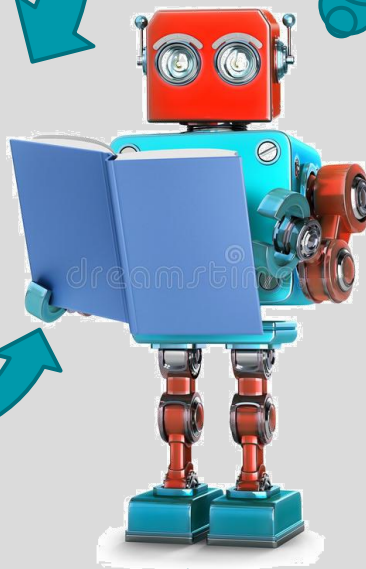
POIRE



PERA



αχλάδι



What we see

Needs

Ideas

Outputs/Reports

Visions

Authorities

Disease Control

Data Management

Statistical Analysis

... people

Data Collection

Legal work

Standards

HOW IT IS !

What we need ...

Mapping and Harmonisation of Data



Deeply understand each other
Well communicate the information
Share difficulties and problems
Work together
Support each other



Collaboration amongst People, National Authorities and
EFSA

Step 1: Country Contact Points /Representatives

- **1st presentation at AHAW Network meeting (14-15 May 2018)**
- **One contact point /representative for SIGMA project:**
 - ✓ **participate to the activities of SIGMA**
 - ✓ **coordinate the competent authorities**
 - ✓ **receiving and submitted the EUSurveys**
- **14 EU MSs have designated Country Contact Points/ Representatives**
- **For the rest we have contacted the members of the AHAW Network**

Step 2: Data Sources Mapping

To identify the Competent Authorities at National level collecting different data on:

- **Animal Population**
- **Establishments (farms, slaughterhouses, assembly centres, markets, etc)**
- **Diseases ASF, AI, LSD (Surveillance, outbreaks and laboratory results)**

- **Mapping of the Competent Authorities**
- **Finding the Competent Persons**
- **Creating the Country Card**

Collection of the information

EUSurvey online application:

Online Questionnaire : Easy and user friendly

Creates a *database*

Updated online

Records

Avoid e-mails & Excel files circulation



Two EUSurveys :

- 1) 'Data Sources Mapping '**
- 2) 'Data on Animal Population '**

1st EUSurvey: Data Sources Mapping

Data Sources Mapping

Fields marked with * are mandatory.

Pages

[Intro](#)
[Animal Population](#)
[Establishments](#)
[Diseases](#)
[Submit](#)

Data on Animal Population

Animal population

Use the "Comments" column to insert additional Authorities or persons involved

	Bovines	Pigs	Poultry	Comments
Is there a national database recording the <i>animal</i> population? (Yes/No)	//	//	//	//
Are the records at individual animal level? (Yes/No/Sometimes)	//	//	//	//
Authority collecting data at central level (Indicate the name of the Organisation)	//	//	//	//
Authority collecting data at central level (Indicate the names of divisions example: General	//	//	//	//

Standard [Accessibility Mode](#)

Languages

[EN] English ▼

Background Documents

[Data_protection_note_-_Data_Sources_Mapping.pdf](#)

Contact

Sotiria-
Eleni.ANTONIOU@efsa.europa.eu

[Download PDF version](#)

2nd EUSurvey: Data on Animal Population

Pages

[Introduction](#)
[Bovines](#)
[Pigs](#)
[Poultry](#)
[Submit](#)

The individual **identification code** of the **establishment or destination** to which the animal is going to (e.g. in case sold to another establishment)

☐ ☐

B. Data registered for the establishments where the bovine animals are kept.

Does your national database provide the **total number of animals** kept in each establishment?

- ☐ Yes
☐ No

Are the following entities (variables) registered, in available fields, in your national database for the bovine population?

	Yes	No
The registration date of each establishment (the date when the establishment was registered for the first time)	<input type="radio"/>	<input type="radio"/>
The closing date of each establishment. (i.e.: the date when the establishment is not functional anymore and the owner decide to stop any activity)	<input type="radio"/>	<input type="radio"/>
The specific type of the establishment (i.e.: if this establishment is a farm, a market, an assembly centre, etc.)	<input type="radio"/>	<input type="radio"/>
The production type of the establishment e.g. dairy, beef, mixed etc	<input type="radio"/>	<input type="radio"/>
The type of housing (indoor/outdoor access) of the establishment	<input type="radio"/>	<input type="radio"/>
The commercial or non-commercial activity of the establishment	<input type="radio"/>	<input type="radio"/>
The level of biosecurity of each establishment, in case there is a system of categorisation in place in your country	<input type="radio"/>	<input type="radio"/>
The ZIP code of the area where the establishment is located.	<input type="radio"/>	<input type="radio"/>
The Coordinates (XY) of the exact location of the establishment	<input type="radio"/>	<input type="radio"/>

Do you use the **NUTS classification system** of the European Commission for the geolocation of the establishments within the database?

 Regulation (EC) No 1059/2003 (for more information please see the [link](#))

- ☐ Yes
☐ No

The **species** of each animal

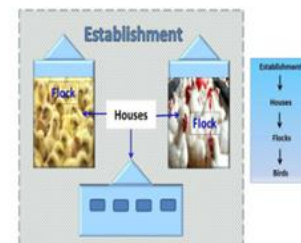
Poultry: Data on poultry population, available at a national level

The aim of the following questions is to provide EFSA with information on the data of poultry population and related establishments, available at national level.

Do you have a **National database** for poultry population?

- ☐ Yes
☐ No
☐ Partially

Please have a look at the image below, where the structure of a poultry establishment is presented as an example.



Are the following entities (variables) registered, in available fields, in your national database for the poultry population or in case there is no a central database are available at central level through other means (sharing excel, access, word archives) ?

	Yes	No
The unique identification code of the establishment where houses of birds are located	<input type="radio"/>	<input type="radio"/>
The unique identification code of houses where flocks/birds are kept	<input type="radio"/>	<input type="radio"/>
The number of houses located in each establishment	<input type="radio"/>	<input type="radio"/>

Are the following entities (variables) registered, in available fields, in your **national database** for the bovine population?

	Yes	No
The total number of animals kept in each registered bovine animal	<input type="radio"/>	<input type="radio"/>
The specific type of the establishment (i.e.: if this establishment is a farm, a market, an assembly centre, etc.)	<input type="radio"/>	<input type="radio"/>
The production type of the establishment e.g. dairy, beef, mixed etc	<input type="radio"/>	<input type="radio"/>
The type of housing (indoor/outdoor access) of the establishment	<input type="radio"/>	<input type="radio"/>
The commercial or non-commercial activity of the establishment	<input type="radio"/>	<input type="radio"/>
The level of biosecurity of each establishment, in case there is a system of categorisation in place in your country	<input type="radio"/>	<input type="radio"/>
The ZIP code of the area where the establishment is located.	<input type="radio"/>	<input type="radio"/>
The Coordinates (XY) of the exact location of the establishment	<input type="radio"/>	<input type="radio"/>

Activities and results

- **11 June 2018 EFSA released 30 EUSurveys (28 EU MSs , Iceland, Norway)**
- **21 EU MSs replied (75%) + Iceland**
- **Country Cards have been drafted for 19 MS**
- **11 MSs have been approved by MSs**
- **2nd EUSurvey released to 11 MSs**
- **4 MSs have already replied**

EFSA's Activities and the Response of the MSs

14 MSs(50%) designated a Contac Person for SIGMA

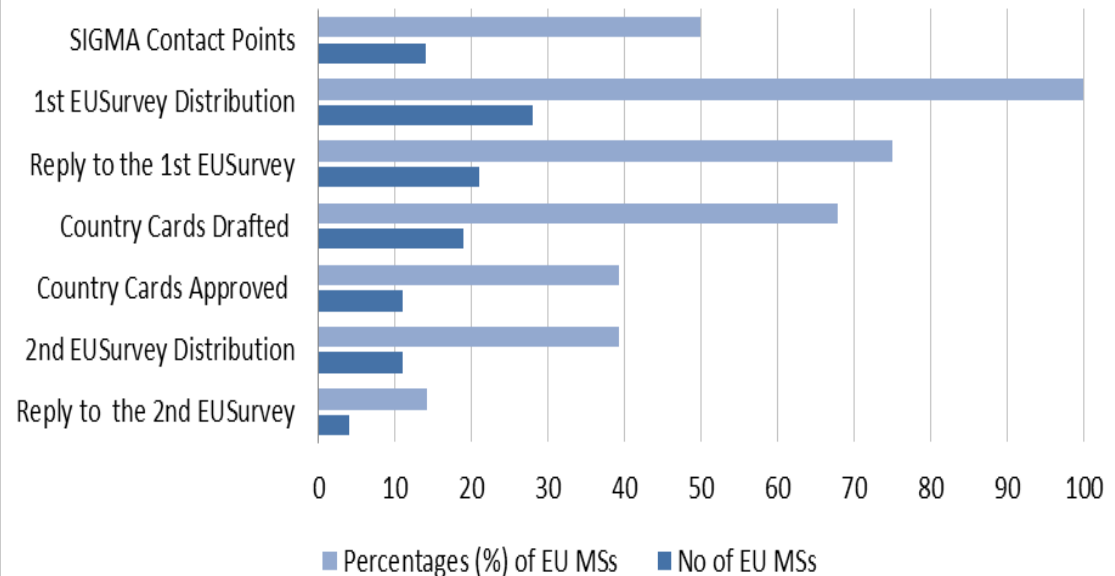
21 MSs (75%) replied the 1st EUSurvey

19 Country Cards have been Drafted by EFSA

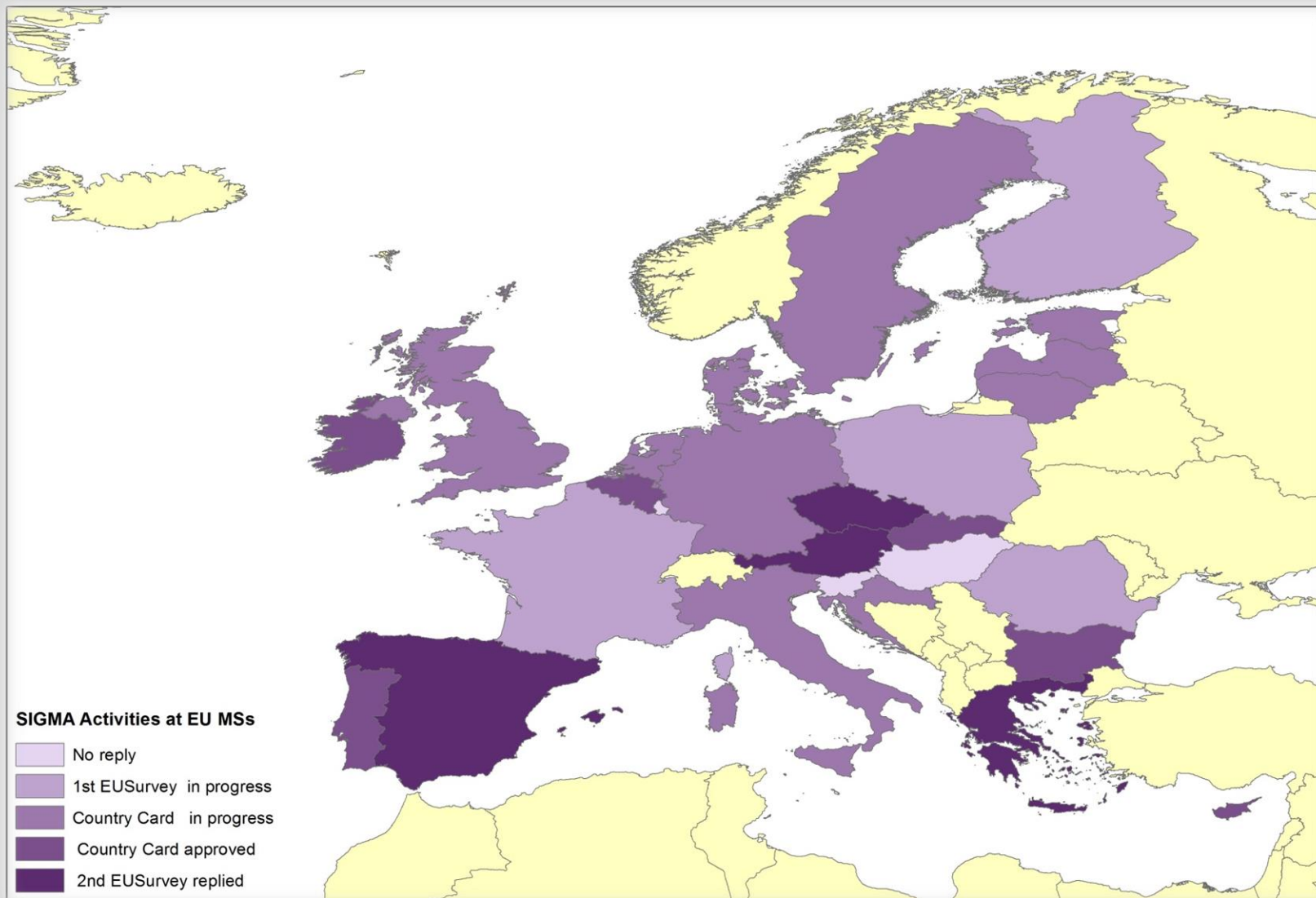
11 MSs (39%) approved their Country Card

4 MSs(28%) replied the 2nd EUSurvey

Actions (EFSA) and Responses(MSs)

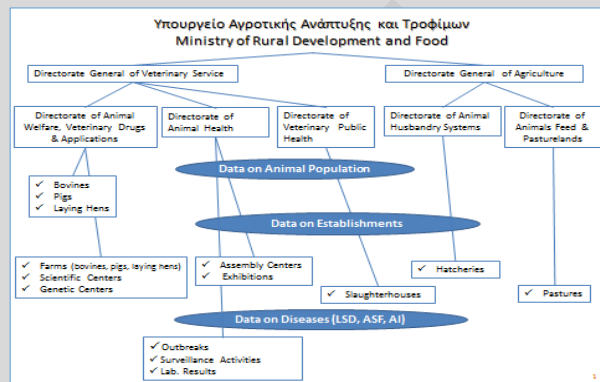


SIGMA activities in MSs



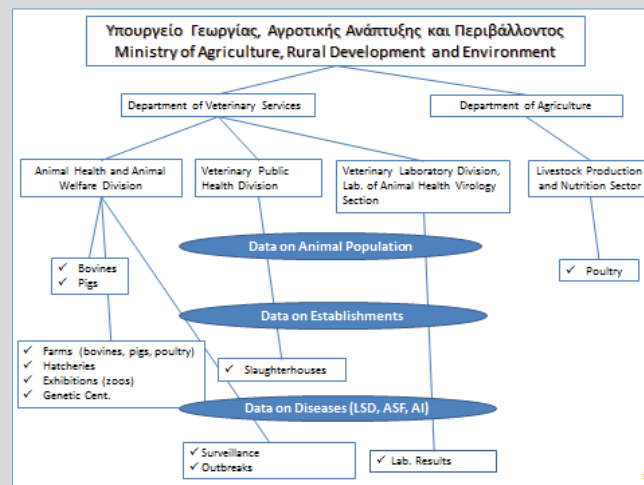
Examples of Country Cards

Greece (Ελλάδα, EL)



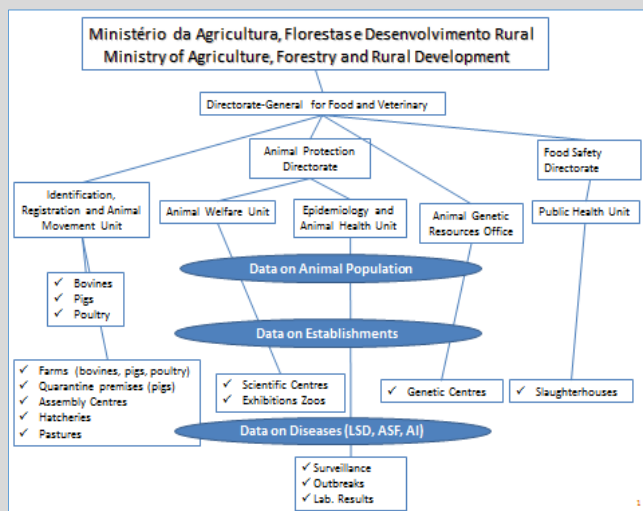
Page 1 of 1

Cyprus (Κύπρος, CY)



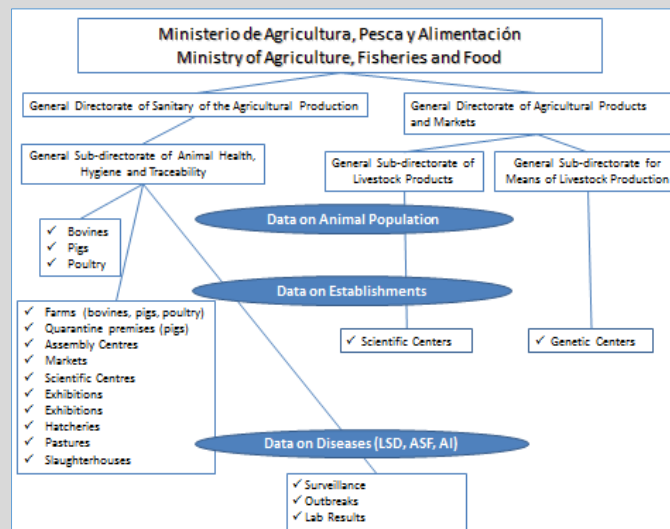
1

Portugal (Portugal, PT)



1

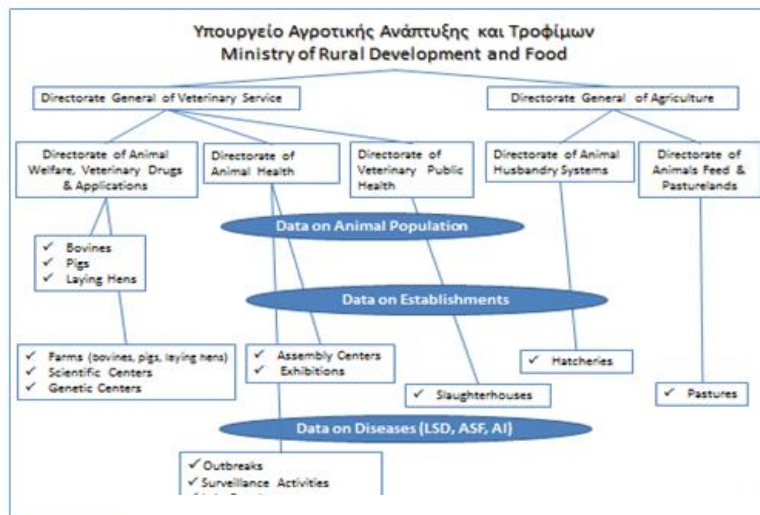
Spain (España, ES)



1

Country Card

Greece (Ελλάδα, EL)



The Ministry of Rural Development and Food is the national/central source of data related to animal diseases and to animal population in Greece. The Ministry of Rural Development and Food is responsible for the implementation of the agricultural policy focussed on the development of rural economy and on the production of safe and sufficient agricultural products.

The General Directorate of Veterinary Service, via its three Directorates, is mainly involved with the collection and management of the data respectively. The Directorate of Animal Welfare, Veterinary Drugs & Veterinary Applications is responsible for the data on animal population and the establishments where live animals are kept; while for slaughterhouses responsible is the Directorate of Veterinary Public Health. The Directorate of Animal Health is involved with the data on animal diseases (outbreaks, surveillance activities, laboratory results) exhibitions and assembly centres.

The General Directorate of Agriculture is also involved with the data on hatcheries and pastures.

Seat: Athens

Website: www.minagric.gr

Data on the Animal Population

Animal Categories	National Data Base	Individual Registration	CONTACT PERSON	e-mail	National/Central Authority Collecting Data	
Bovines	YES	YES			Directorate General of Veterinary Service/ Directorate of Animal Welfare, Veterinary Drugs & Veterinary Applications / Department of Identification & Registration of Animal Population & Artificial Insemination	MINISTRY OF RURAL DEVELOPMENT & FOOD www.minagric.gr
Pigs	YES	SOMETIMES (not compulsory)				
Poultry (only for laying hens)	YES	NO			Directorate General of Veterinary Service/ Directorate of Animal Welfare, Veterinary Drugs & Veterinary Applications/ Department of Animal Welfare For Farm & Laboratory Animals	

TAKE HOME MESSAGE

- Minimise the workload of the MSs
- Increase the quality of EFSA outputs
- Increase the speed of the scientific feedback
- Relevant and timely feedback to the Risk Managers (MSs and EC)



WE NEED YOU

COMMUNICATION ACTIVITIES

■ **Animal Health Network**

- Lists of volunteers as SIGMA reference persons

■ **CVOs**

- Official letter sent on 3^o September
- Commitment by the Veterinary Authorities to support the Consortium activities (data architecture)
- Willingness to keep the data-link active once in place

■ **Focal Points**

- Liaise with the SIGMA representatives
- Liaise with CVOs
- Facilitate the communication and the collaboration

VALIDATION ACTIVITIES

Verify the information already received through the EUSurveys :

- the existing list with the National Contact Points for SIGMA project of the MSs
- the Country Cards : with the reference authorities and persons within the authorities for the different data domain (bovine population, poultry population, disease data, etc.)

THANKS FOR YOUR....
NETWORKING ATTENTION!!

