

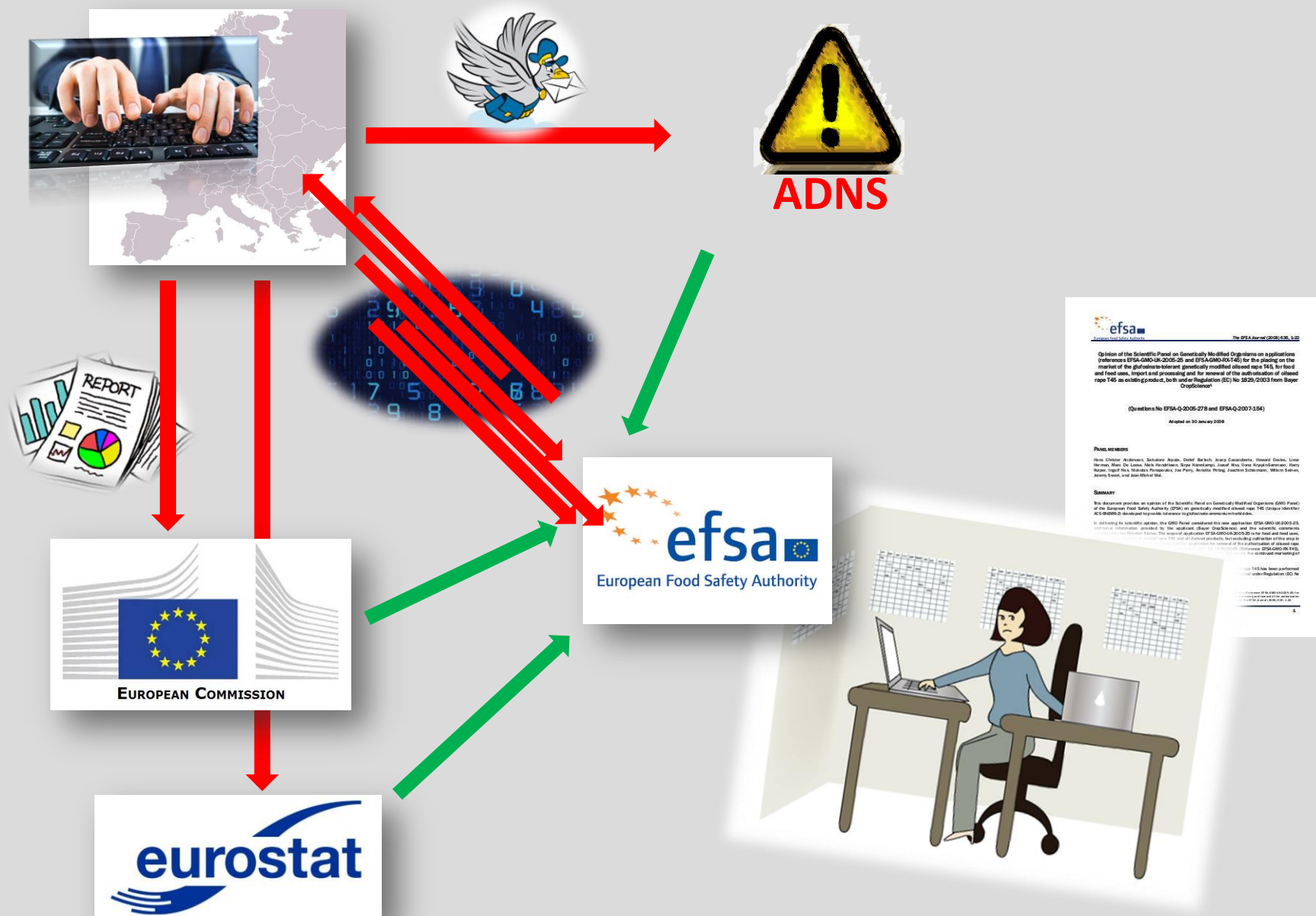


SIGMA – a comprehensive animal disease data collection approach

Because data matter!

***IPA countries meeting
26 Feb 2019***

Where we (still) are...





THE CORE IDEA



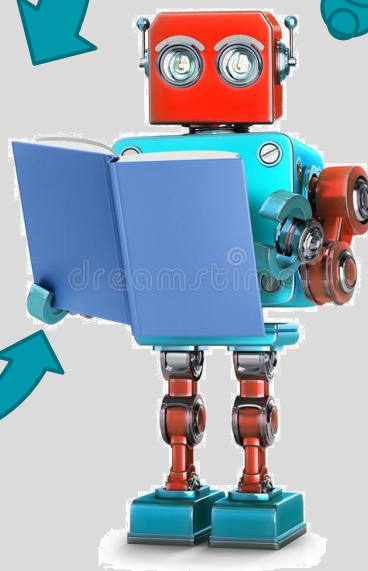
POIRE



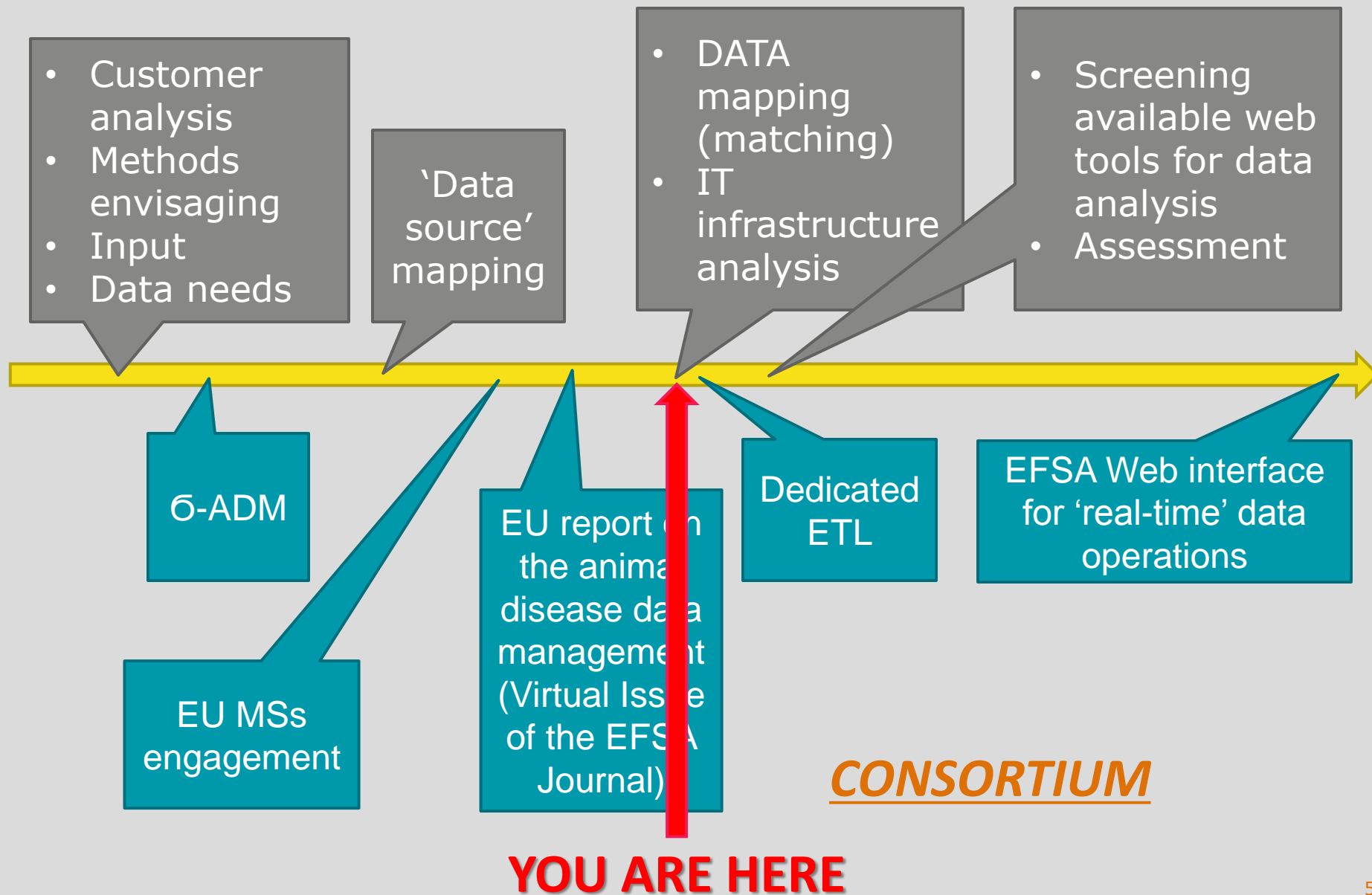
PERA



αχλάδι



Roadmap



Work in progress

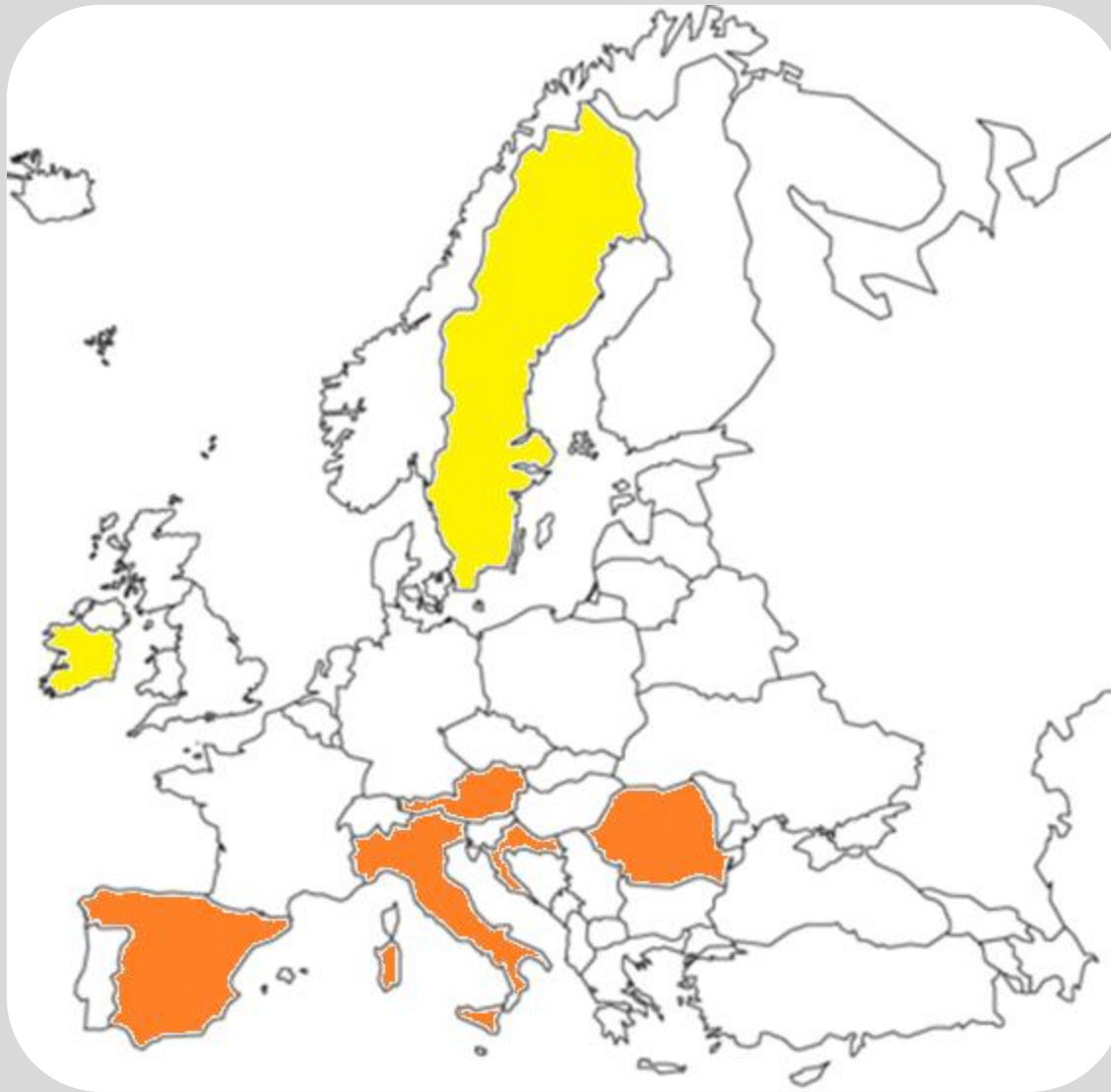
CVO	
Reply	10
Missing reply	18

TYPE OF REPLY	
YES	6
NO	3
FOLLOW UP	1

ENGAGEMENT	
YES	5
NO	3
PENDING	2
Not Available	18



SIGMA countries in a glance



Frequently Asked Questions

What is SIGMA about???

What data are we talking about?

Is it compulsory to submit those data??

What is expected from the engaging countries??

What is the resolution required?

What's in it for me???

What do you mean by «automation»?

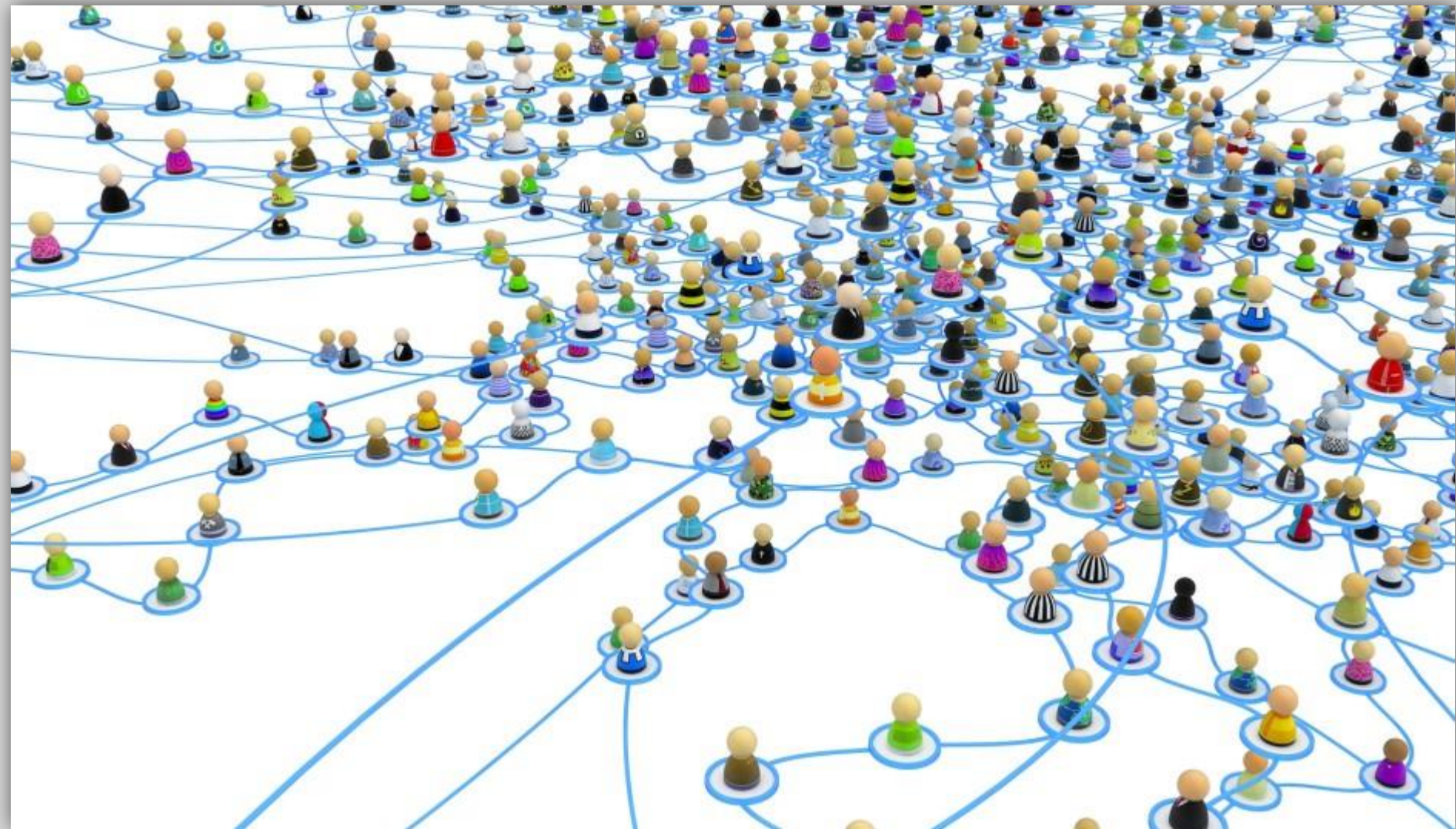
TAKE HOME MESSAGE

- Minimise the workload of the data providers
- Increase the quality of EFSA outputs
- Increase the speed of the scientific feedback
- Relevant and timely feedback to the Risk Managers (MSs, other countries and EC)



WE NEED YOU...
**... but you might
need SIGMA**

THANKS FOR YOUR....
NETWORKING ATTENTION!!



The SIGMA consortium

WHO

the partners

- **IZS Abruzzo e Molise “G. Caporale” (LEAD)**
- **Friedrich Loeffler Institut**
- **SVA (Swedish National Vet Institute)**
- **Bulgarian Food Safety Agency**
- **Institute of Vet Med and Animal Sciences, Estonian University of Life Sciences**

WHAT

the tasks

- **Contribution to the ‘Data Source’ mapping**
- **DATA mapping**
- **Screening, Inventory and Assessment of the available Web Tools for data analysis and reporting**