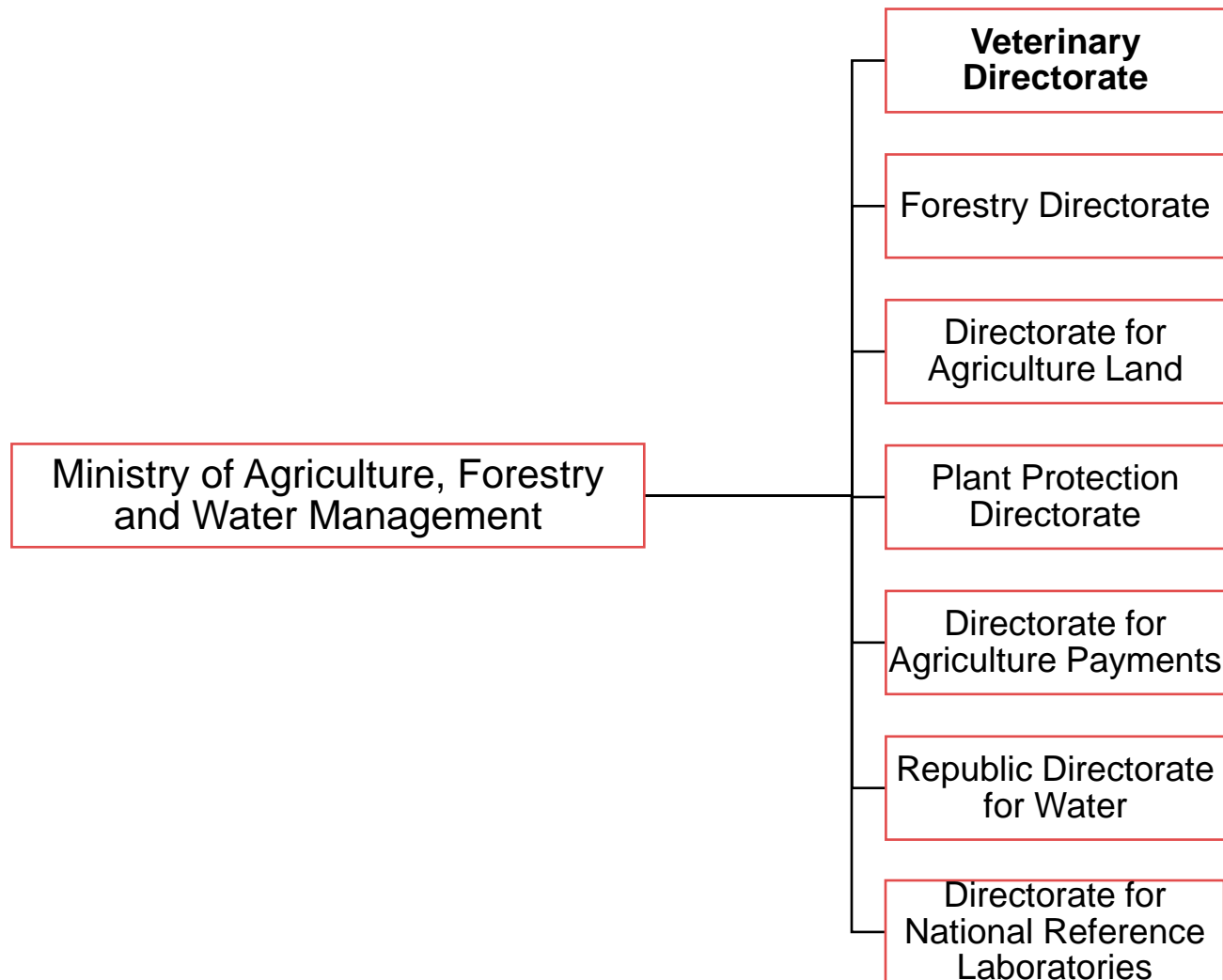


Data sources on animal diseases: Country Card - Republic of Serbia

Nadežda Dukić
EFSA Focal point
Republic of Serbia

Ministry of Agriculture, Forestry and Water Management



Data on Animal Populations

Animal species ^(a)	Central Competent Authorities
	Veterinary Directorate
Bovines	Department for Animal Health
Swine	
Poultry	

a)The animal species that are affected by the three diseases (ASF, AI and LSD) on which EFSA is currently working.

Data on the establishments (where live animals are kept)

Type of establishment ^(a)	Animal species ^(b)	Central competent authority
		Veterinary Directorate
<i>Quarantine premises</i> <i>Holdings</i> <i>Pastures</i>	Bovine Swine Poultry	<i>Department for Animal Health</i>
Farms		Department for Animal Welfare and Veterinary Tasks
Assembly centers		
Markets		
Exhibitions		
Hatcheries		
Scientific centers		
Genetic centers		
<i>Slaughterhouses</i>		<i>Department for Veterinary Public Health</i>

(a) The types of the establishments that exist in the country and for which EFSA has received information.

(b) The animal species that are affected by the three diseases (ASF, AI and LSD) on which EFSA is currently working.

Data on animal diseases

Type of data	Disease	Central competent authorities
		Veterinary Directorate
Surveillance Activities	LSD ASF wild ASF domestic AI wild AI domestic	Department for Animal Health
Outbreaks	LSD ASF AI	
Laboratory results	LSD AI ASF	

The central Competent Authority for the data on animal diseases and animal population in the Republic of Serbia

