

Parma 26 February 2019



# Mapping the Data Sources on Animal Diseases in EU Member States

**Sotiria-Eleni Antoniou DVM, MSc**

Scientific Officer, SNE

What it is known ....

Needs

Ideas

Outputs

Reports on Risk Assessment

Visions

Authorities

Disease Control

Data Management

Statistical Analysis

... people

Data Collection

Legal work

Standards

- **To identify the data sources:**  
Where are these data?  
Which are the responsible Authorities?
- **To identify the available data already existed in the Authorities**
- **To understand the available data**
- **To build a harmonised data model**
- **To develop a mechanism to transport the data**

## **Step 1 : Country Contact Points /Representatives**

One reference person for SIGMA activities in each Country to coordinate the national competent authorities

## **Step 2: Mapping the Data Sources**

To identify the Competent Authorities at National level collecting different data on:

- Animal Population
- Establishments (farms, slaughterhouses, assembly centres, markets ...)
- Diseases (Surveillance, outbreaks and laboratory results)

## **Step 3 : Data on Animal Populations**

To identify the main available variables at National level in MSs

## EUSurvey online application:

**Online Questionnaire:** **Easy and friendly**  
**Creates a *database***  
**Updated online**  
**Records**  
**Avoid e-mails & Excel files circulation**



## **Harmonised questionnaire for comparable results**

**Split into three different sections:**

### **1. data on animal populations:**

- bovines
- swine
- poultry

### **2. data on the establishments where the animals are kept:**

- 10 different types of establishments

### **3. data on the diseases:**

- outbreaks
- surveillance activities
- laboratory results

The set of questions applied for each type of data aimed to gather the following information:

- **the existence or not of a national database** for the registration and the recording of the information on each type of data
- **whether the data are recorded at individual level** (per animal or per establishment)
- **which is the central authority collecting data**, if any (name of the main organisation and the exact name of the administrative authority)
- **the link to the website of the authority**
- **the first name and the surname of the reference person** in each one of these authorities
- **the email address** of the reference person
- **whether this authority is also the data owner** of the data in question
- **the data model/dictionary** was requested to be uploaded if it was available.

## Data Sources Mapping

Fields marked with \* are mandatory.

### Pages

Intro

**Animal Population**

Establishments

Diseases

Submit

## Data on Animal Population

### Animal population

Use the "Comments" column to insert additional Authorities or persons involved

	Bovines	Pigs	Poultry	Comments
Is there a national database recording the <i>animal</i> population? (Yes/No)	//	//	//	//
Are the records at individual animal level? (Yes/No/Sometimes)	//	//	//	//
Authority collecting data at central level (Indicate the name of the Organisation)	//	//	//	//
Authority collecting data at central level (Indicate the names of divisions example: General	//	//	//	//

Standard [Accessibility Mode](#)

### Languages

[EN] English ▼

### Background Documents

[Data protection note - Data Sources Mapping.pdf](#)

### Contact

Sotiria-  
Eleni.ANTONIOU@efsa.europa.eu

[Download PDF version](#)

The **methodology** followed by EFSA to identify the central competent authorities responsible for the data on animal diseases and animal populations in each MS and to **develop then the Country Cards**, has been published as a Technical Report in EFSA Journal.

## TECHNICAL REPORT

APPROVED: 14 December 2018

doi:10.2903/sp.efsa.2018.EN-1530



### **Data sources on animal diseases:**

Methodology on mapping the data sources on animal diseases in  
European Union Member States

European Food Safety Authority (EFSA)

[https://efsa.onlinelibrary.wiley.com/doi/toc/10.1002/\(ISSN\)1831-4732.AnimalHealth](https://efsa.onlinelibrary.wiley.com/doi/toc/10.1002/(ISSN)1831-4732.AnimalHealth)

The Country Cards, one per each MS, is the output of the mapping data sources activity. Each one presents the network of the central authorities responsible for the data in each MS.

The Country Cards were published as Technical Reports.

**17 Technical Reports have been already published**  
3 Countries still pending (Germany, Denmark, Netherlands)



# Example of Technical Report

- Abstract, Introduction, Methodology, **Country Card**

## 3. Country Card

The **Ministry of Rural Development** and to animal population Development and Food is responsible for the development of rural economy and

The General Directorate of Veterinary Services is responsible for the collection and management of the data on animal diseases (outbreaks, surveillance and

The General Directorate of Agriculture is responsible for the collection and management of the data at primary

**Table 1:** The central competent authorities for the data on animal populations in Greece.

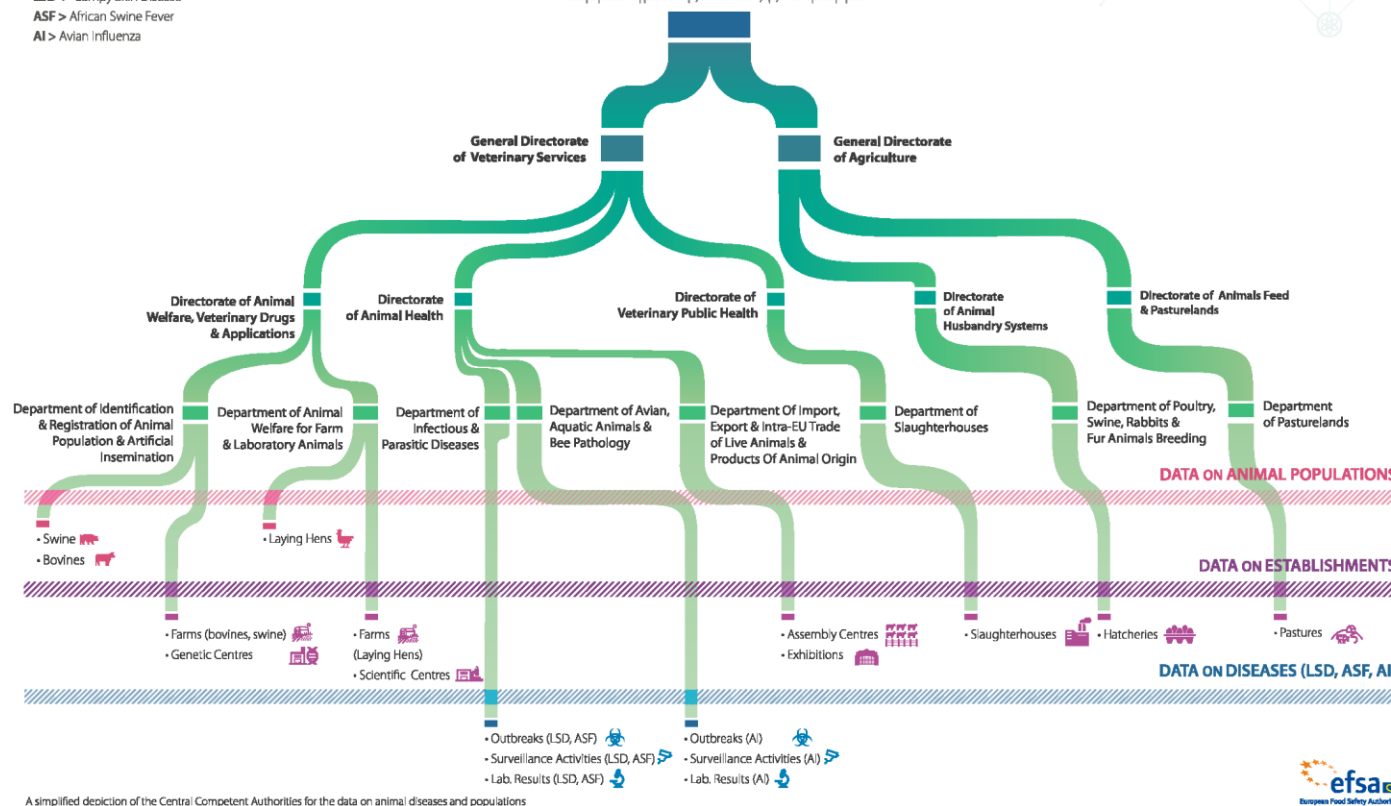
## Greece (Ελλάδα, EL)

### LEGEND

LSD > Lumpy Skin Disease  
 ASF > African Swine Fever  
 AI > Avian Influenza

## Ministry of Rural Development and Food

Υπουργείο Αγροτικής Ανάπτυξης και Τροφίμων



A simplified depiction of the Central Competent Authorities for the data on animal diseases and populations

**Table 2:** The central competent authorities for the data on animal diseases and populations in Greece.

Type of establishment <sup>(a)</sup>	Animal species <sup>(b)</sup>
Farms	Bovines Swine
	Poultry (laying hens)
Genetic centres	Bovines Swine
Scientific centres	Bovines Swine Poultry
Exhibitions Licenced zoos	Bovines Swine Poultry
Assembly centres	Bovines Swine Poultry
Slaughterhouses	Bovines Swine Poultry
Hatcheries	Poultry
Pastures	Bovines Swine Poultry

(a) The types of the establishments that exist in the country and for which EFSA has received information.

(b) The animal species that are affected by the three diseases (ASF, AI and LSD) on which EFSA is currently working.

AI

Directorate of Animal Health/  
Department of Avian, Aquatic Animals & Bee Pathology

# An interactive presentation of the 'story' of the data

## Using esri Story Maps App

### Data Sources on Animal Diseases in EU Member States

[Introduction](#)[Methodology](#)[Country Cards](#)[Acknowledgements](#)

A Story Map

No issues detected ×

Edit ×

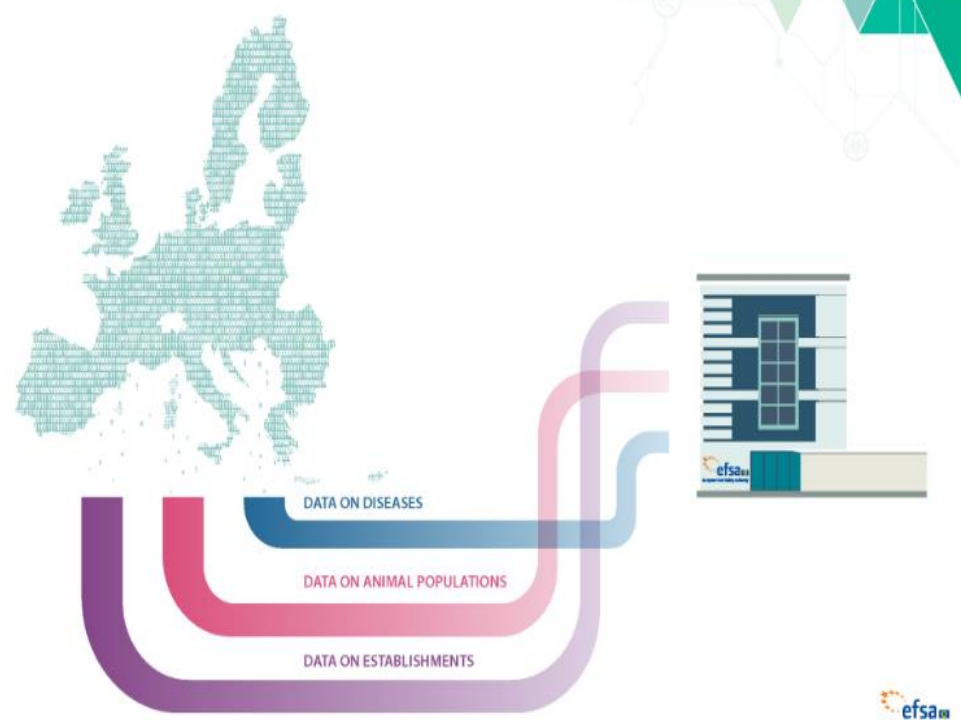
esri

#### Introduction

Risk assessments on animal diseases included in the activities of EFSA in order to provide scientific and technical support to the European Commission and to the Member States. More specific EFSA is focusing on the epidemiological analysis of animal diseases, the assessment of the surveillance activities in place, and the prediction of the the spread of the diseases.

For this purpose, in recent years EFSA has been performing ad hoc data collections, gathering specific information on outbreaks, surveillance activities, laboratory results, animal populations related to these

#### Data sharing between EU Member States and EFSA



DATA ON DISEASES

DATA ON ANIMAL POPULATIONS

DATA ON ESTABLISHMENTS

## Expand the borders of SIGMA project beyond European Union ???

- Implementation of the Data Modell on animal diseases?
- Training activities ?



**Thank you very much!**



## Subscribe to

[www.efsa.europa.eu/en/news/newsletters](http://www.efsa.europa.eu/en/news/newsletters)  
[www.efsa.europa.eu/en/rss](http://www.efsa.europa.eu/en/rss)



## Engage with careers



## Follow us on Twitter

@efsa\_eu  
@plants\_efsa  
@methods\_efsa