



RUOKAVIRASTO

Livsmedelsverket • Finnish Food Authority



RUOKAVIRASTO
Livsmedelsverket • Finnish Food Authority

Risk assessment activities in Finnish Food Authority

Pirkko Tuominen

Head of Unit

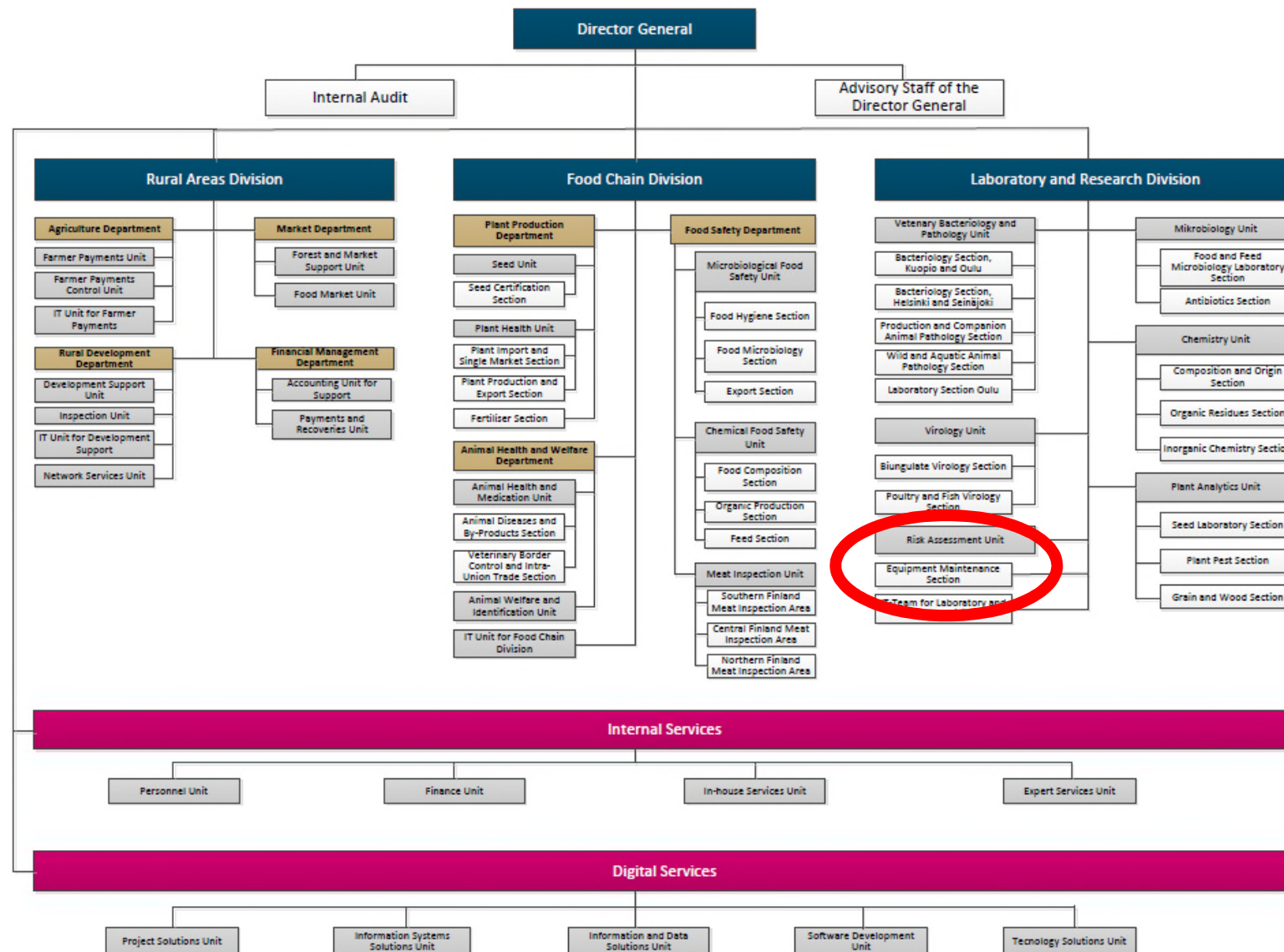
Risk Assessment Unit,

Laboratories and Research Department

EFSA Advisory Forum meeting

18.-19.9.2019

Finnish Food Authority





Tasks of the Risk Assessment Unit

- Food safety
- Animal health
- Plant health

- International principles:
Codex Alimentarius,
OIE, IPPC

- Independent information on risks
- Scientific opinions to risk management decisions and control planning
- Tools for risk managing
- Statistical models and new methods for assessment
- Training, education

- EFSA's focal point
- OIE focal point activities

- Risk assessment networks



International and national networking

- Universities, research institutes
- Governmental authorities
- TULANET (Finnish Research Institute Partnership)
- **Matine** (The Scientific Advisory Board for Defence / CBRN)
- EFSA and it's networks, Focal Point
- OIE Focal Point activities
- Nordic networks

tukes



HELSINGIN YLIOPISTO
HELSINGFORS UNIVERSITET
UNIVERSITY OF HELSINKI

VTT

 **TULLI**
TULL • CUSTOMS


Luke
NATURAL RESOURCES
INSTITUTE FINLAND

 **stuk**



Finnish institute for
health and welfare



S Y K E

Finnish Environment Institute

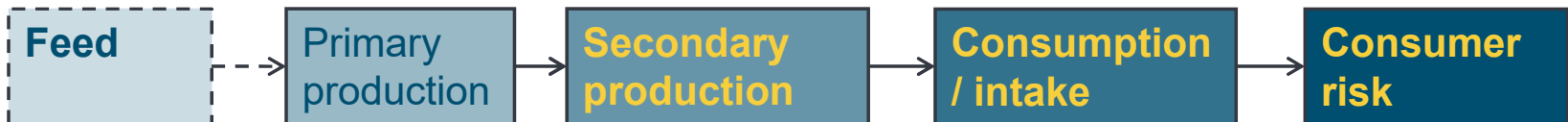
"The client":

- need of investigation/risk assessment
- order of risk assessment





Finnish Salmonella Control Programme





Examples of current activities

Food safety

- BIKE: Modeling exposure to foodborne biological and chemical hazards
- RUORI: Costs and risk assessment of the impact of the food system on public health

Infectious animal diseases

- “Rescue dogs”: foreign pathogens of cross-border dogs

Plant health

- Identification of new pest threats to Nordic coniferous forests

Common activities

- Iris.ai: artificial intelligence for faster scientific literature search



Risk assessment trainings (in English)

- **Uncertainty in Risk Assessment**

Peter Craig (UK) , Hauke Riesch (UK), 2014

- **Risk Assessment – 10th Anniversary Seminar**

Isabelle Albert (FR), Helen Roberts (UK), Polly Boon (NL), Anthony O'Hagan (UK), 2011

- **QRA - Expert Knowledge Elicitation**

Anthony O´Hagan (UK), Tony Cox (USA), 2009

- **Chemical exposure assessment**

Jacob van Klaveren (NL), Stefan Fabianson, 2008

- **Bayesian methods (WinBUGS)**

David Draper (USA), 2004

- **Import Risk Assessment (@RISK)**

Noel Murray (NZ), 2003

- **@RISK -modelling**

David Vose (BE), 2000



A scenic photograph of a rocky coastline. In the foreground, dark, textured rocks are visible. To the right, a body of water with small waves stretches towards the horizon. In the background, a city skyline is visible under a clear blue sky with some scattered clouds. A bright sun flare is present in the top left corner.

RA Unit:

Biology

Chemistry

Engineering

Environmental hygiene

Environmental science

Food hygiene

Mathematics

Microbiology

Nutrition

Pharmacology

Statistics

Toxicology

Vetrinary medicine

Veterinary public health

News from us



Risk assessment

<https://www.ruokavirasto.fi/en/organisations/risk-assessment/>

Risk assessment on animal diseases

<https://www.ruokavirasto.fi/en/organisations/risk-assessment/risk-assessment-of-infectious-animal-diseases/>

Plant health risk assessment

<https://www.ruokavirasto.fi/en/organisations/risk-assessment/plant-health-risk-assessment/>

Twitter <https://twitter.com/riskinarviointi>

Focal point <https://www.ruokavirasto.fi/en/organisations/focal-point/>

Mikrobiological risk assessment

<https://www.ruokavirasto.fi/en/organisations/risk-assessment/risk-assessment-of-food-safety/microbiology/>

Risk assessment on chemical food hazards

<https://www.ruokavirasto.fi/en/organisations/risk-assessment/risk-assessment-of-food-safety/chemistry/>



RUOKAVIRASTO
Livsmedelsverket • Finnish Food Authority

Thank you!

Pirkko Tuominen

Pirkko.tuominen@foodauthority.fi