

6 October 2020

Towards an evolved engagement approach: several streams, one framework

Matthew Ramon and Cinzia Percivaldi (ENCO)

Trusted science for safe food

The big picture



EFSA strategy
Transparency Regulation

Stakeholder Forum
SEA review



Quality
of science

Preparedness

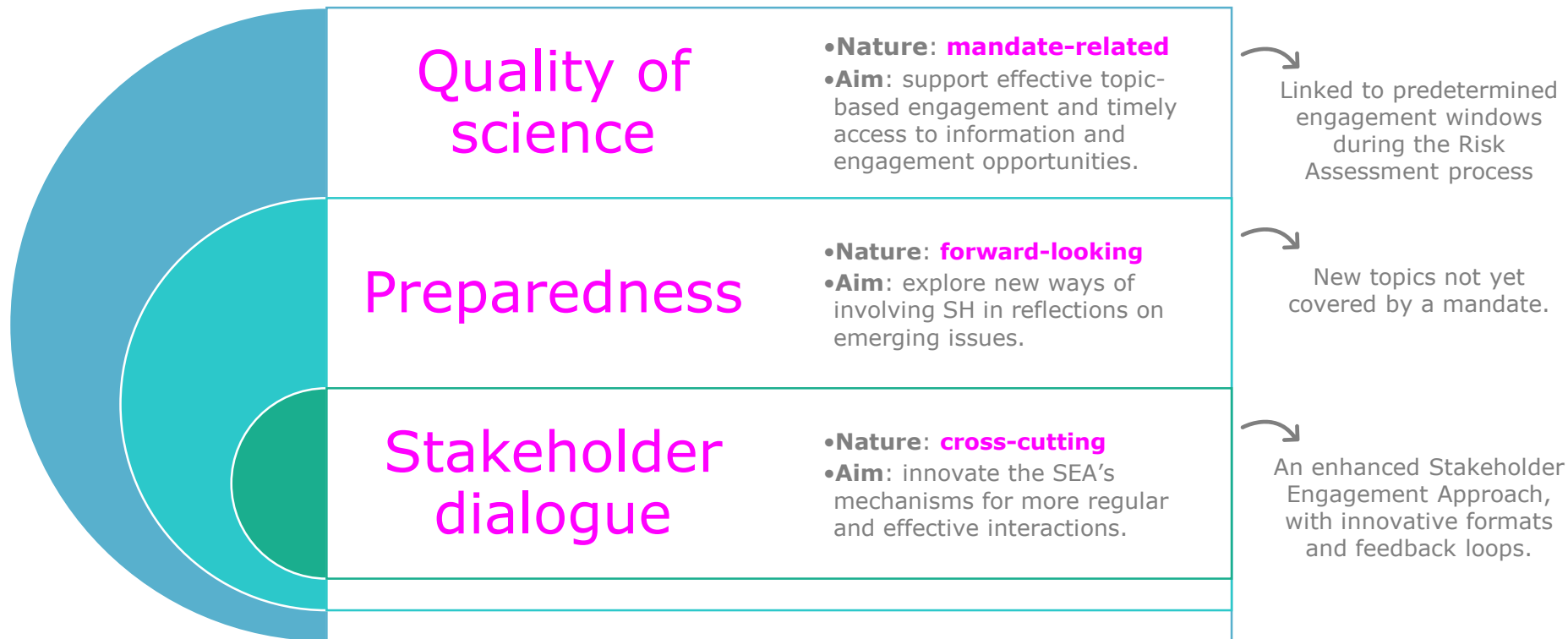
Stakeholder
dialogue



Desk research

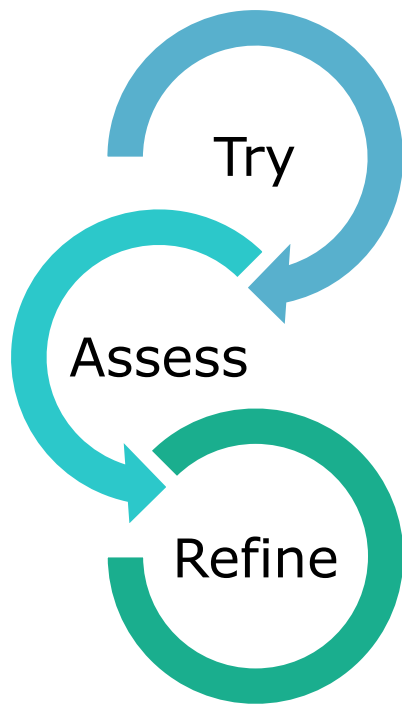
Stakeholder Engagement Approach (SEA)

Three engagement streams, one framework



Towards a more integrated approach





In the pilot phase (2021-2022), we will **test some new methods** on different geographical scales and with different audiences. Pilots will happen **in each of the engagement streams** we have identified:

- At **local level** (target: Parma citizens), building on what is already in place for Parma 2020+21 Italian Capital of Culture.
- At **EU level** on topics selected with Science Units (target: stakeholders, partners) and on issues impacting the SEA's mechanisms.
- At **international level** in cooperation with partners (target: EU and international partners)

Preparedness

JAN 2021: 'Getting prepared for the future challenges' (method: digital workshop)

Q4 2021: new food and feed production technologies (method: knowledge fair)

Q2 2022: new food and feed production technologies (method: vision factory)

Quality of science

MAR 2021: launch of dissemination portal (enhanced register of questions)

JUN 2021: 'Towards a topic-based engagement approach' (method: digital workshop or info session)

Stakeholder dialogue

APR 2021: 'Building our digital community, together' (method: digital workshop)

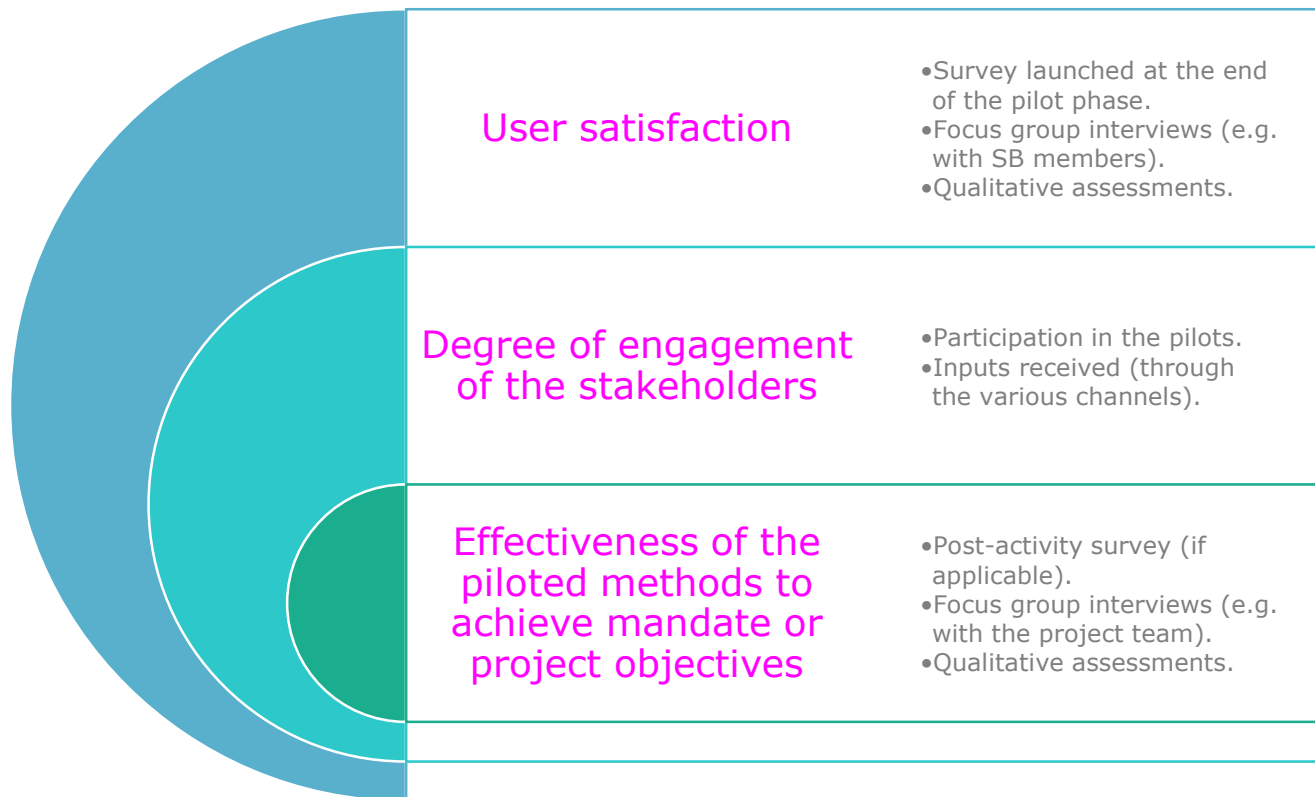
As from March 2021: rescoping of Bureau's and Forum's scope and formats (*fil rouge* / feedback loop)

TBD (Q4 2021 or Q1 2022): launch of a digital stakeholder community



Events of the digital series (to tackle specific aspects of the evolved framework we are designing and gather input on the open questions).

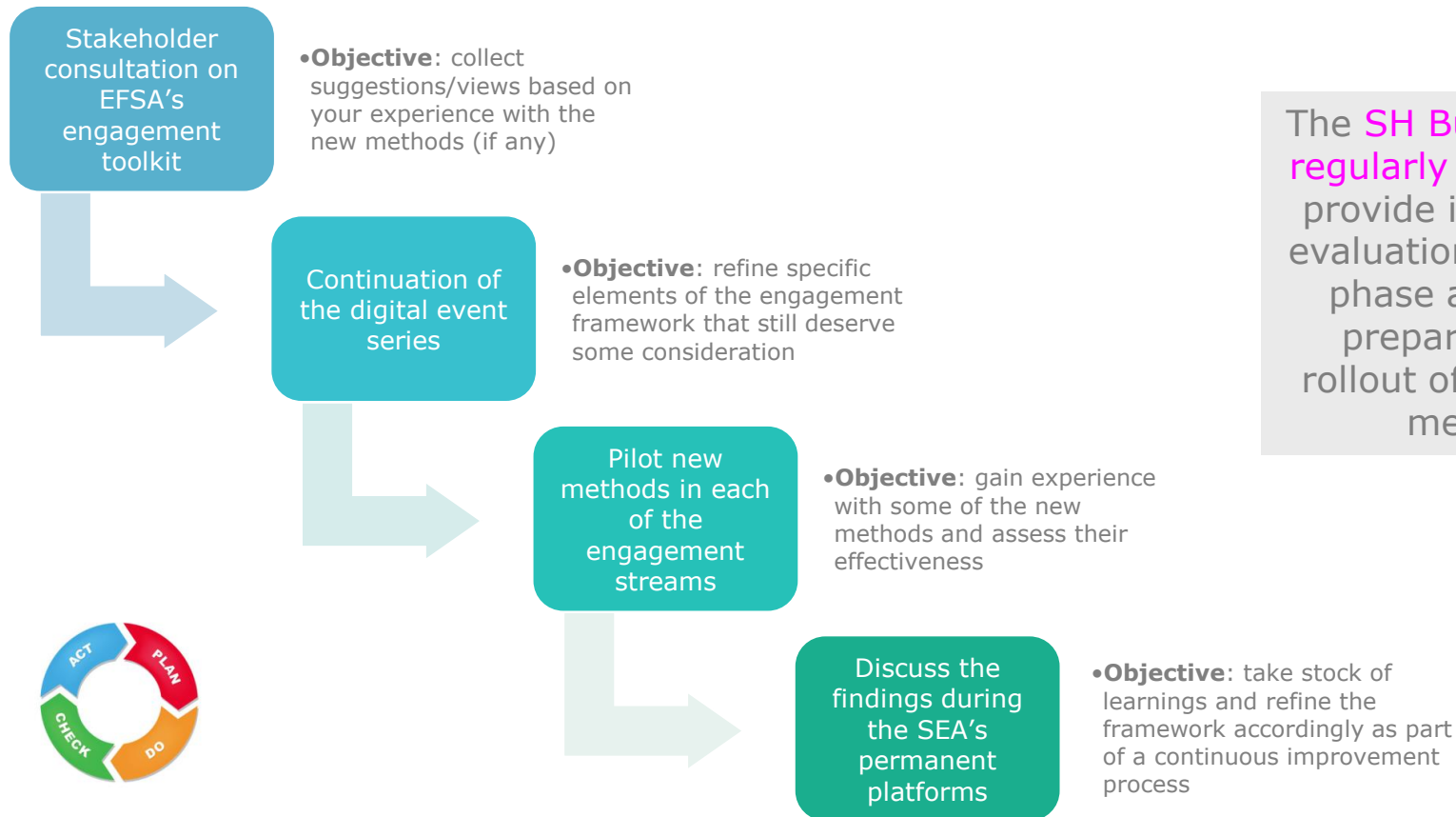
How will we evaluate the pilot phase?



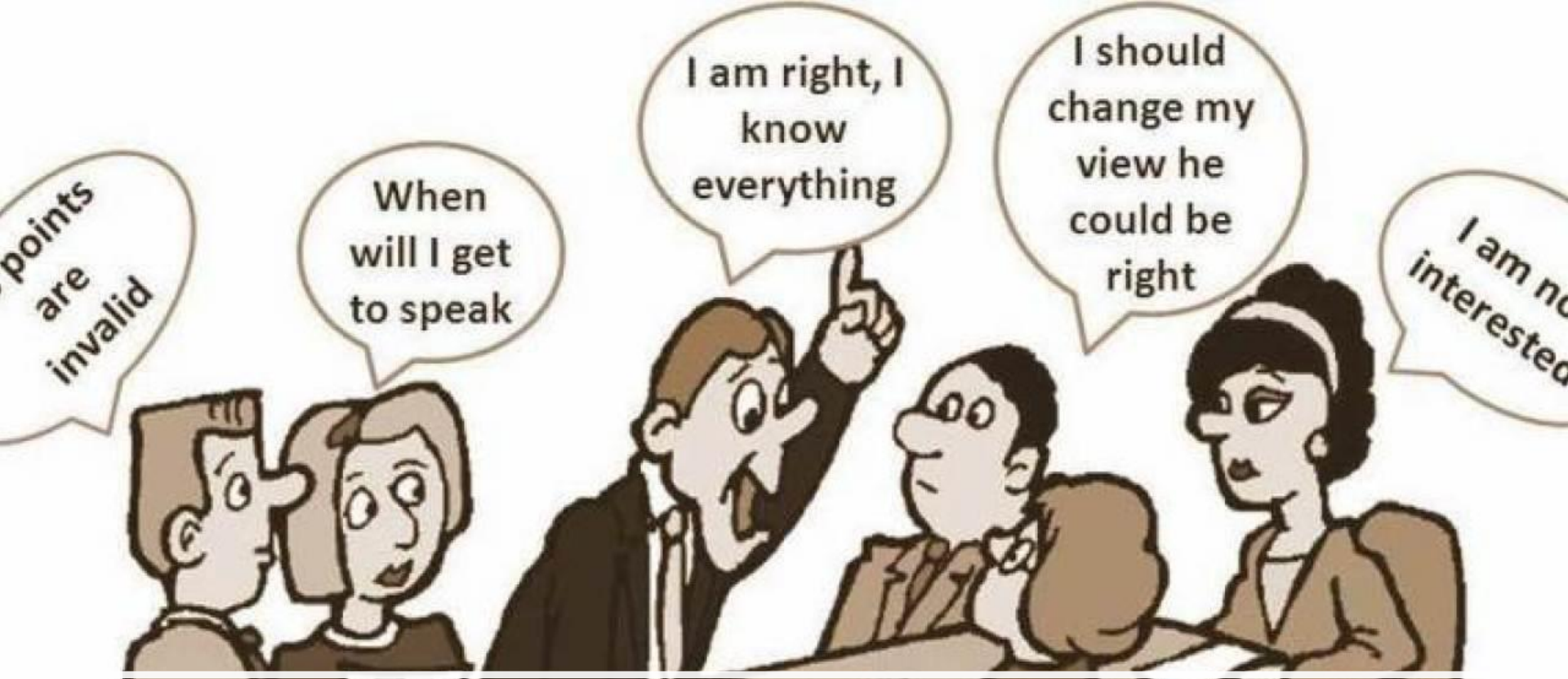
The outcome of the evaluation will be presented and discussed with the Stakeholder Bureau first, then with the whole community.



Methodology and process to run the pilot phase



The **SH Bureau will be regularly consulted** to provide input on the evaluation of the pilot phase and on the preparation and rollout of the piloted methods



Thank you for your attention!