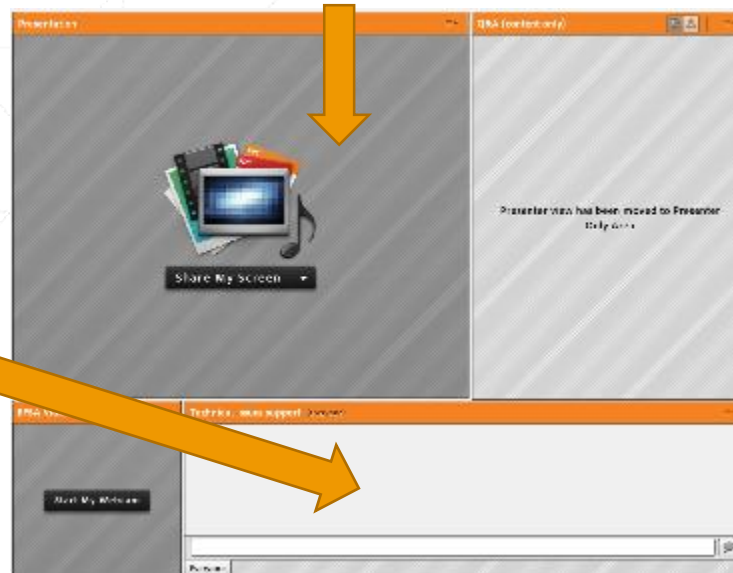


Webinar guide for attendees

- This webinar is being recorded!
- The webinar **is in English** and questions should be submitted in English through the platform (see below).
- You are automatically connected to the audio broadcast (listen only mode).

Presentation window



Q&A box:
For any questions related to the topic



Chat box: For technical issues related questions

Trusted science for safe food

26.06.2020



High Risk Plants: The EU approach to plant commodity risk assessment

Trusted science for safe food

- Laura Carotti



- Oresteia Sfyra



- Alžběta Mikulová

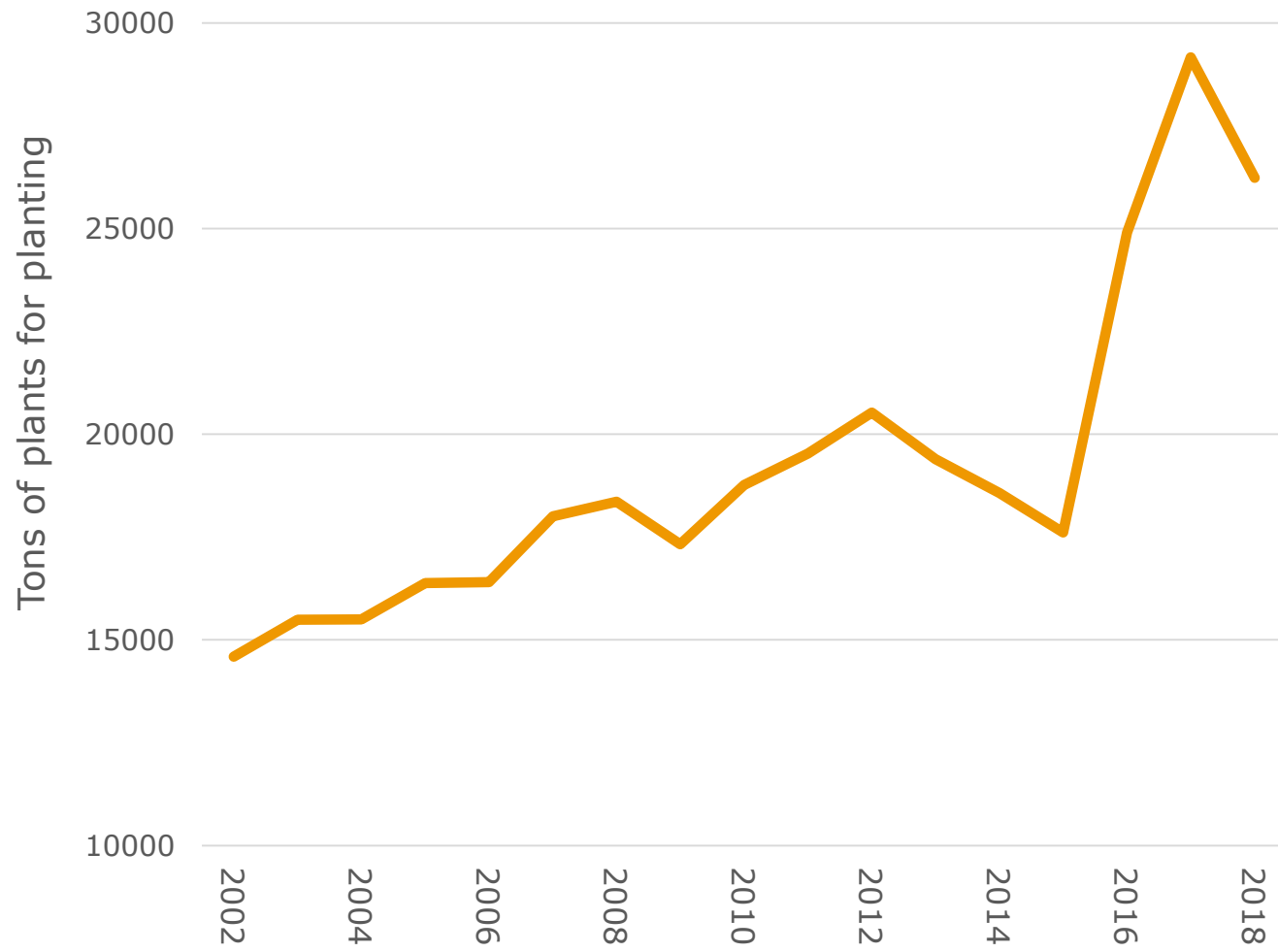


- Background on Commodity Risk Assessment
- EU provisions on High Risk Plants
- Lessons learned and margin for improvement
- Question & Answers session
- Closure of the webinar

Trade in plants for planting is the major pathway for introduction of plant pests and pathogens.



Import of Plants for Planting into the EU



EUROSTAT, EU trade since 1988 by SITC



Examples of Pests Introduced by Trade

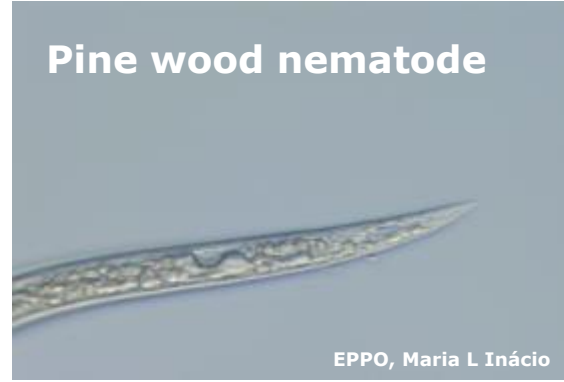
Red palm weevil



**Brown marmorated
stink bug**



Pine wood nematode



EPPO, Maria L Inácio

**Black and white
longhorn**



Hibiscus mealybug



EPPO, Regina Sugayama

Lemon tree borer



EPPO, Prof. Qiao Wang

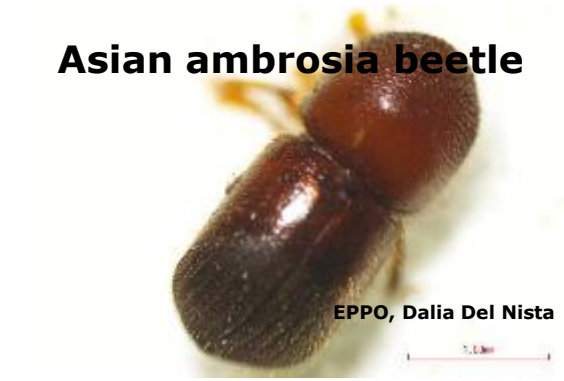
Japanese beetle



Peach borer



Asian ambrosia beetle



EPPO, Dalia Del Nista

Japanese long scale



EPPO, Ilya Mityushev

Xylella fastidiosa

- In South of Europe up to **98%** of the olive cultivated area is suitable territory for the pest spread*
- In Italy, the potential economic impact could reach **5 billion Euros** over the next 50 years*



*Schneider *et al.*, 2020

What is the European Union doing to prevent the entry of pests?



REGULATION (EU) 2016/2031 on protective measures against pests of plants

- Article 42: Definition of High Risk Plants

COMMISSION IMPLEMENTING REGULATION (EU) 2018/2018

- Commodity risk assessment of High Risk Plants

COMMISSION IMPLEMENTING REGULATION (EU) 2018/2019

- List of the High Risk Plants



1. Plants for planting

- 34 genera and 1 species
- General ban from all third countries pending a risk assessment



2. Plants

- 1 species (*Ullucus tuberosus*)
- General ban from all third countries pending a risk assessment



3. Fruits

- 1 genera (*Momordica L.*)
- Ban based on identified pest of concern (*Thrips palmi*)

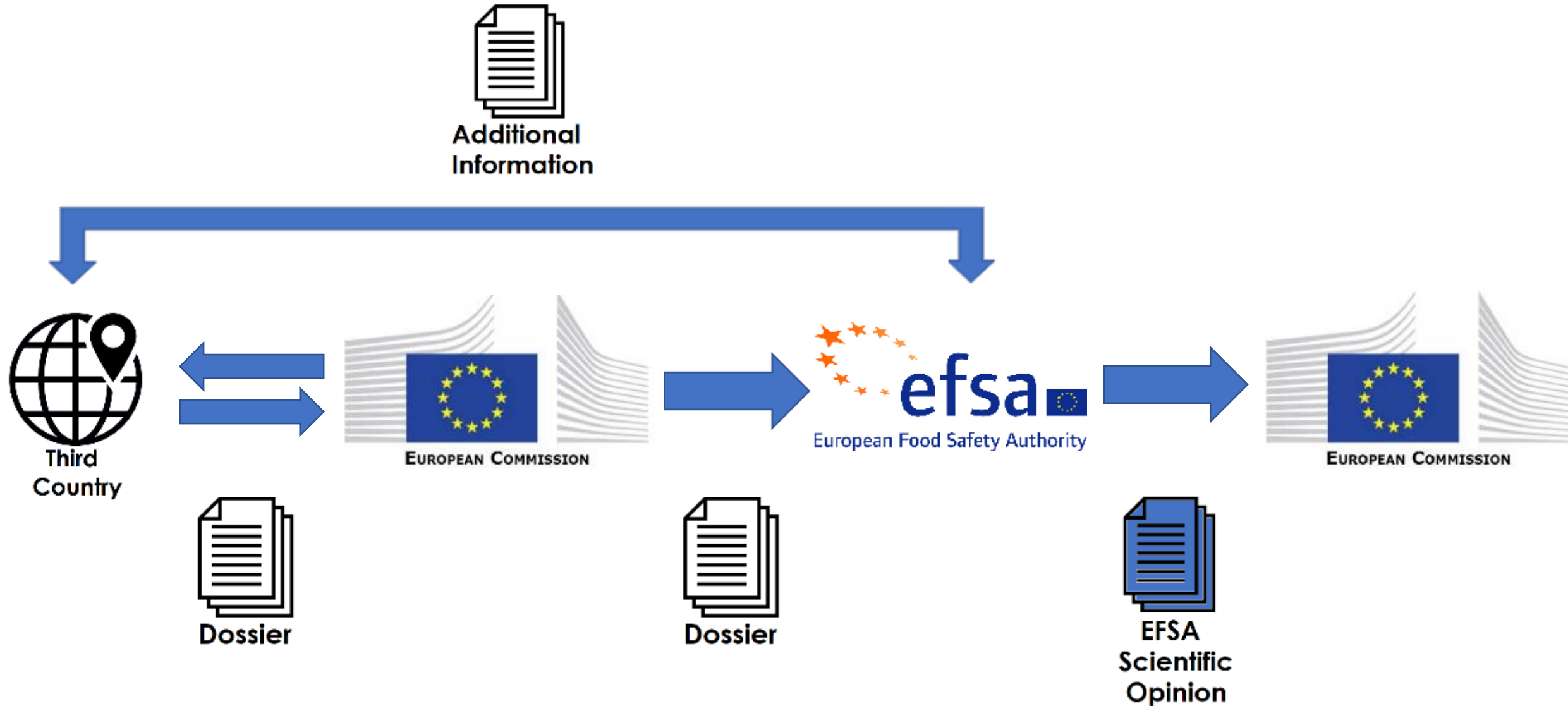


4. Wood

- 1 genera (*Ulmus L.*)
- Ban based on identified pest of concern (*Saperda tridentata*)



Commodity Risk Assessment Procedure

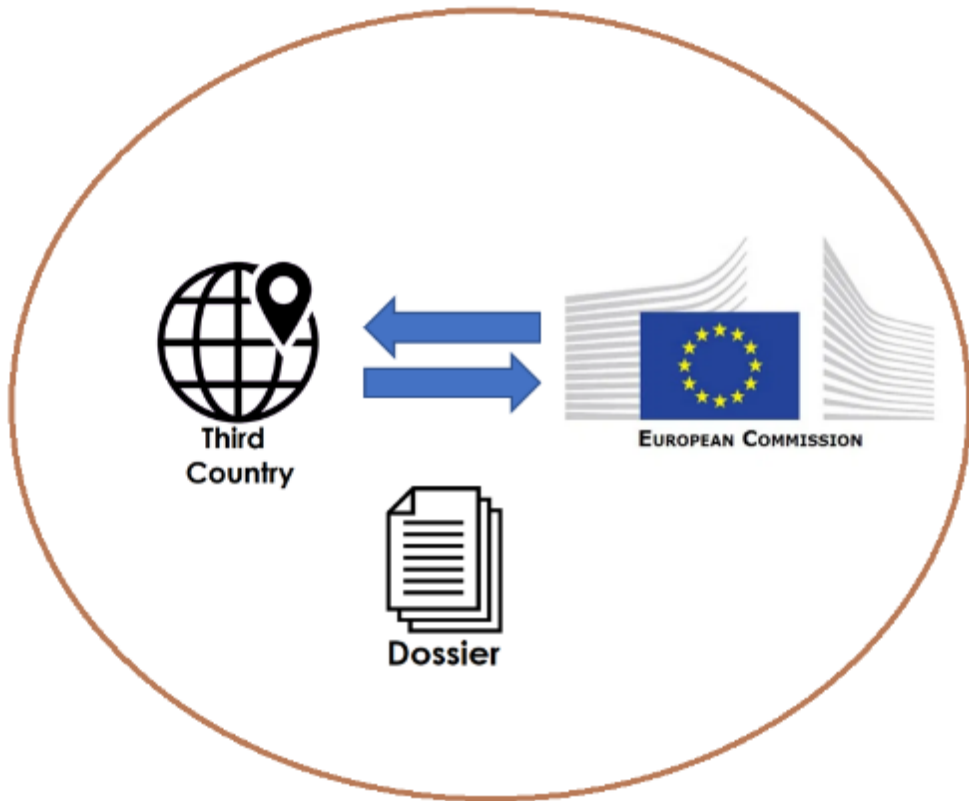


What should the Third Country do?

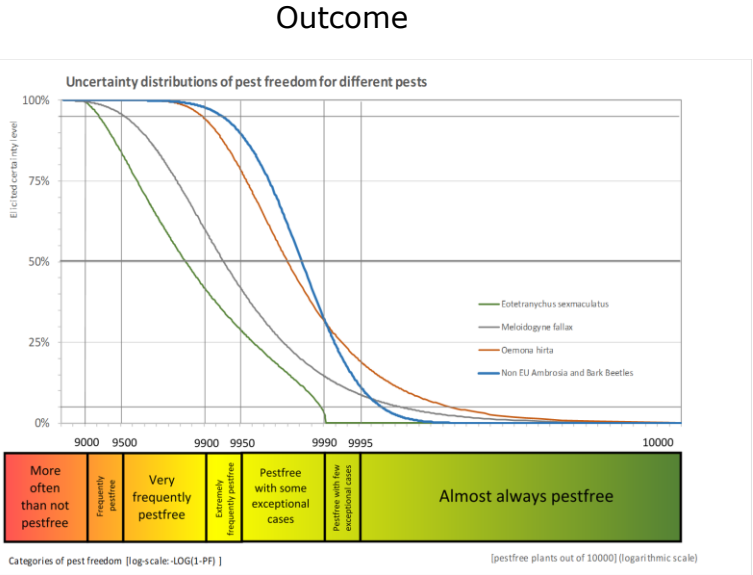
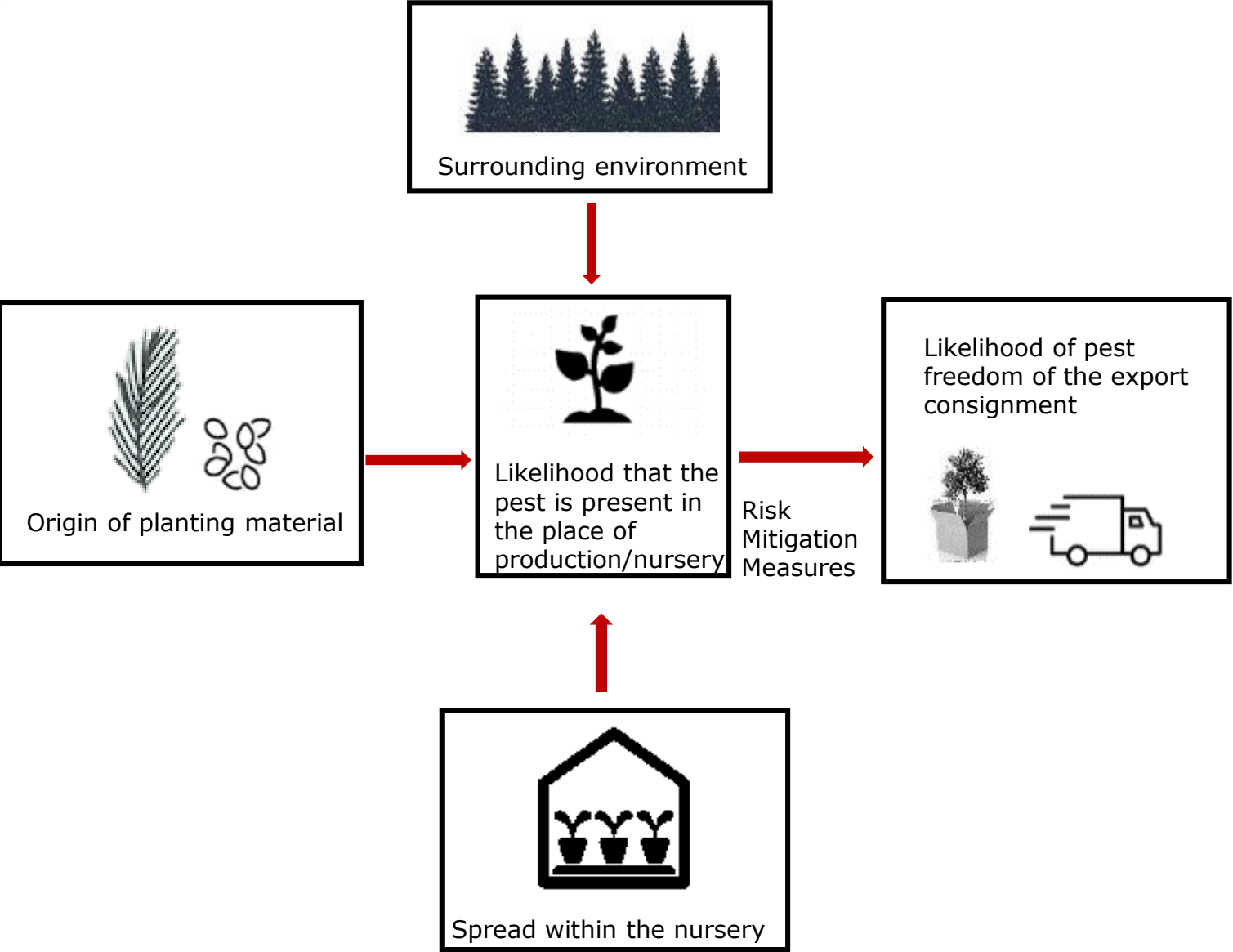


The dossier is composed of three main sections:

- 1. Commodity description**
- 2. Pest list:** identification of pests associated with the commodity and description of the relevant ones (**current legislation**)
- 3. Phytosanitary mitigation measures**



Quantitative Commodity Risk Assessment



What did we learn after one year of dossier evaluations?



1. Commodity Data

- Species level
- Commodity description
 - Size, age
 - Stem diameter
 - Leaves/without leaves
 - Bare rooted/with soil
 - Dormant
- Pictures of the commodity



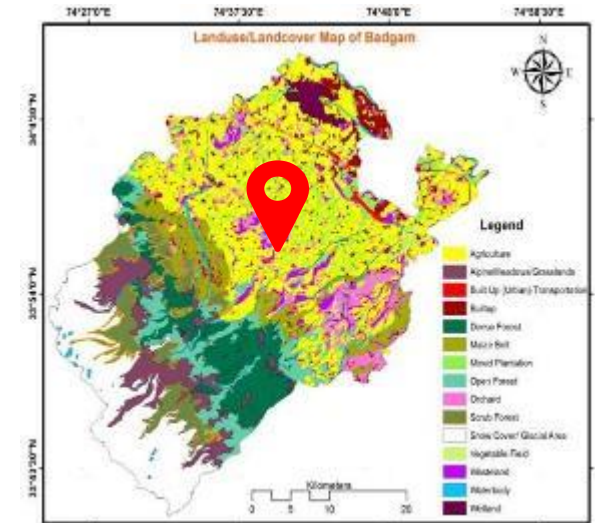
2. Production site/nursery

- List of all exporting nurseries
- Description of each production site/nursery
 - Open fields vs. greenhouses
 - Nets, plastic cover
- Indication of all plant species produced
- Registered or certified



3. Location and Surroundings

- Exact location of production site/nursery
 - Vegetation/Land use around the nursery
 - Other nurseries/plant production sites around
- Pest pressure
- Pest-free areas



Muslim et al., 2018



4. Production Process

- Origin of plant material
 - Mother plants, seeds, scions, ...
- Period when the commodity is produced
 - Vegetation cycle
 - Phenology of the crop
- Exporting consignments
 - Packaging material
 - Number of plants
 - Bags and pallets



- List of **ALL pests** associated with the commodity and present in the third country
- List of the EU quarantine pests
 - **Commission Implementing Regulation (EU) 2019/2072**
- List of pests with potential impact
 - **Dossier requirements (EFSA, 2018):** for the criteria of potential impact



6. Mitigation measures


- Mitigation measures:
 - Chemical treatment
 - Other mitigation measures
 - Weed management
 - Solarization
 - Biological control
 - Pruning
 - Treatment of irrigation water
 - Heat treatment
 - ...

- Legislation on emergency measures

- *Anoplophora chinensis*
- *Xylella fastidiosa*
- ...



7. Chemical Treatments

- Calendar 
- Pesticides
 - Dose
 - Active ingredients
 - Rotation of pesticides
- Phenological stage of treated plants
- Targeted pest



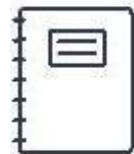
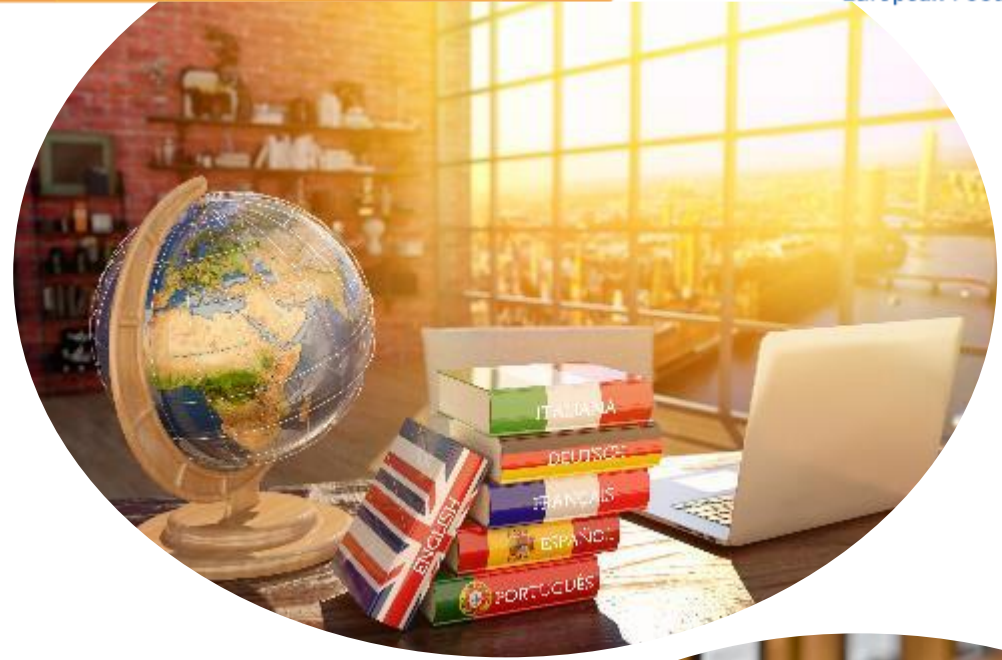
8. Surveillance & Inspections

- Inspection strategies
 - In the nurseries
 - Before export
- Surveillance & monitoring of pests
 - In the nursery
 - Outside the nursery
- Frequencies & intensities
 - Diagnostic protocols
 - Quantitative data



9. Dossier Submission

- All information should be provided preferably in English
- Provide contact details of the National Plant Protection Organization
- Attach references



Dossier

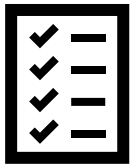


EFSA, with the activity carried out so far on High Risk Plants, has identified **some** potentially dangerous pests associated with the high-risk commodities ([see EFSA Journal virtual issue](#) on High Risk Plants)





Information and data provided by Third countries are the basis used when developing commodity risk assessments.



Detailed quantitative information facilitates the development of commodity risk assessments and contributes to decreasing uncertainties.



Commodity risk assessments are used as a scientific basis to support decisions of risk managers.

For more information on how to prepare dossiers and compile a pest list, you can watch the following webinars:



Part 1 & Part 2



Part 1 & Part 2

REGULATION (EU) 2016/2031

<https://eur-lex.europa.eu/legal-content/EN/TXT/?uri=CELEX%3A32016R2031>

COMMISSION IMPLEMENTING REGULATION (EU) 2018/2018

<https://eur-lex.europa.eu/legal-content/EN/TXT/?uri=CELEX%3A32018R2018>

COMMISSION IMPLEMENTING REGULATION (EU) 2018/2019

<https://eur-lex.europa.eu/legal-content/EN/TXT/?uri=CELEX%3A32018R2019>

Legislation on emergency measures:

https://ec.europa.eu/food/plant/plant_health_biossecurity/legislation/emergency_measures_en

Dossier requirements (by EFSA):

<https://efsa.onlinelibrary.wiley.com/doi/10.2903/sp.efsa.2018.EN-1492>

High Risk Plants:
The EU approach to plant commodity risk assessment

Q & A

Trusted science for safe food

Q&A contributors:

- Ciro Gardi (EFSA - PLH)
- Eduardo de la Peña (EFSA - PLH)
- Světlá Kozelská (EFSA - PLH)
- Maria Chiara Rosace (EFSA - PLH)

Technical and Logistic support:

- Francesco Amoretti
- Anna Campanini
- Carla dall' Aglio
- Francesca Generali

Support

- Sara Tramontini, Caterina Campese, Giulia Mattion, Alice Delbianco (EFSA-PLH)

Nikolaus Kriz, Giuseppe Stancanelli, EFSA PLH team, UMAINE and CORSER Unit for their support.



Thank you for attending our webinar!

In case we did not manage to answer all your **questions**, please feel free to re-submit them via e-mail **alpha@efsa.europa.eu**

Please take **5 more minutes** to **fill out the evaluation form** that you will receive shortly in your inbox.
Your feedback will help us improve our service!

Trusted science for safe food

Stay connected



Subscribe to

efsa.europa.eu/en/news/newsletters
efsa.europa.eu/en/rss



Receive job alerts

careers.efsa.europa.eu – job alerts



Follow us on Twitter

[@efsa_eu](https://twitter.com/efsa_eu)
[@plants_efsa](https://twitter.com/plants_efsa)
[@methods_efsa](https://twitter.com/methods_efsa)
[@animals_efsa](https://twitter.com/animals_efsa)



Follow us Linked in

[Linkedin.com/company/efsa](https://www.linkedin.com/company/efsa)



INTERNATIONAL YEAR OF
PLANT HEALTH
2020



Email

ask@efsa.europa.eu