



EFSA's activities on Bee Health and possible contributions to DG on EU Bee Partnership

Agnes Rortais

Scientific Committee and Emerging Risks Unit

1st EU Bee Partnership DG, 4 December, 2017, Brussels

STRATEGIC OBJECTIVES

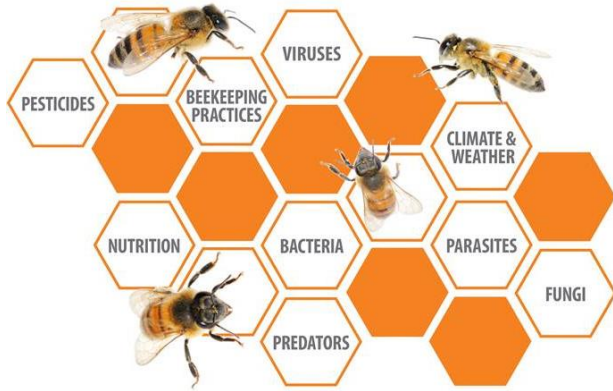
EFSA Strategy 2020

Trusted science for safe food



- Build the EU's **scientific assessment capacity** and knowledge community
- Widen EFSA's **evidence base risk assessment** and optimise **access to its data**
- Prepare for **future risk assessment** challenges

MUST-B WITHIN EFSA STRATEGY



- ✓ **Engage stakeholders** for harmonised data collection and data sharing in EU on bee health
- ✓ Gather **robust data** (harmonised and standardised) for evidence-based RA of bee health
- ✓ Develop **tools & methodologies** for RA of multiple stressors in bees at the landscape level

STAKEHOLDERS ENGAGEMENT

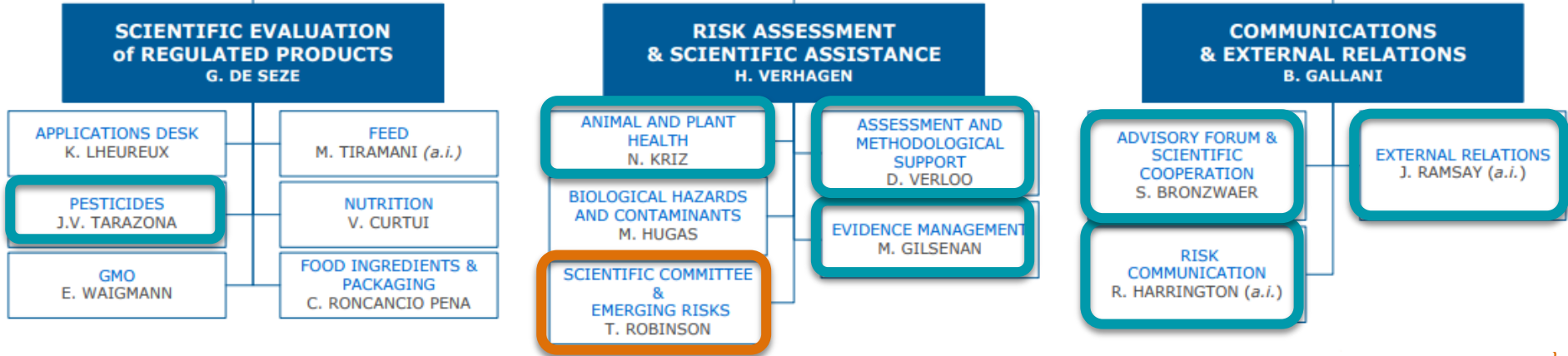
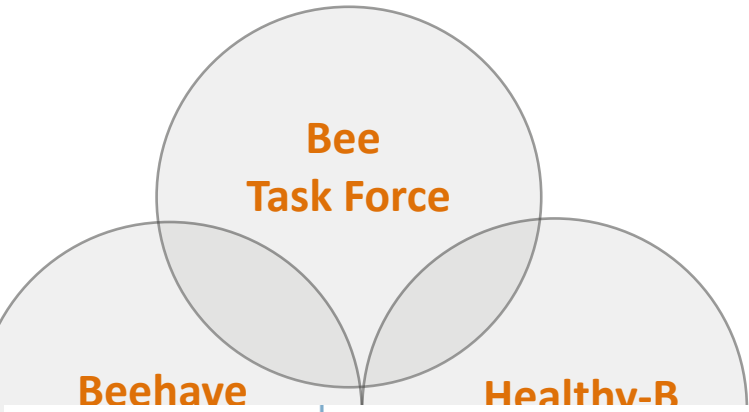


- ✓ **Nov. 2013:** Scientific Colloquium on Towards holistic approaches to the risk assessment of **multiple stressors in bees**
- ✓ **March 2016:** EU scientific workshop on bee health and sustainable pollination for **research prioritisation**
- ✓ **April 2016:** Workshop with Stakeholders on **Healthy-B toolbox**
- ✓ **June 2017:** EFSA Scientific Symposium on Collecting and sharing data on bee health: Towards a **EU Bee Partnership**

MUST-B team

✓ A multidisciplinary EFSA Task Force

✓ 3 Working groups of experts



GATHERING EVIDENCE, DEVELOPING TOOLS...

BEEHAVE WG

Usefulness
of Beehave
model for RA
multiple
stressors on
honey bee
colonies at
landscape
level

EPILOBEE
risk factors

June
2015

Avril
2016

July
2016

MUST-B WG

Conceptual
model for
RA of PPPs
on honey
bee
colonies

HEALTHY-B WG

Toolbox for
harmonised
data
collection &
assessment
of health
status of
colonies

Sept.
2016

Apis-RAM
dvpt

March
2017

MUST-B WG

Field design
for data
collection
for model
calibration
and
evaluation

May
2017

Data
Collection
for Apis-
RAM

Janv.
2018

FUTURE RISK ASSESSMENT CHALLENGE



By 2020

Scientific Opinion on an **integrated methodology** to assess risks posed to bees from exposure to **multiple stressors**

EFSA contribution to EU Bee Partnership



✓ From Apis-RAM

- ✓ **Now:** field design and targeted DC
- ✓ **Early 2019:** tested and validated data models and tools
- ✓ **Early 2021:** computer Apis-RAM model
- ✓ **By 2021:** Lessons learnt

✓ From HEALTHY-B

- ✓ Guidelines on the use of indicators/methods for holistic field surveys and assessment of health status of honey bee colonies

Benefits for EFSA from EU Bee Partnership



- ✓ Support EFSA strategic objectives and MUST-B goals
 - ✓ Optimise **data access**
 - ✓ Increase **resource** efficiency
 - ✓ Consolidate **evidence base RA**
 - ✓ Favour **knowledge transfer** and **RA capacity** building,
...



Subscribe to

www.efsa.europa.eu/en/news/newsletters
www.efsa.europa.eu/en/rss



Engage with careers

www.efsa.europa.eu/en/engage/careers



Follow us on Twitter

@efsa_eu
@plants_efsa
@methods_efsa