



Food and
Veterinary Service
Republic of Latvia

Experience on epidemiological analysis and difficulties encountered in Latvia

Edvins Olsevskis, DVM, PhD

Parma, Italy
23 November 2015



ASF in Latvia: begining of the story

On **26th June 2014** Latvia notified **first case** of African swine fever (ASF) in three wild boar found dead on the border with Belarus.

On the **26th June** NRL confirmed ASF **outbreak** in three domestic pigs in one back yard holding in Krāslava county, Robežnieki parish about 6 km from Belarus border.





ASF summary

Pārtikas un veterinārais
dienests

2014

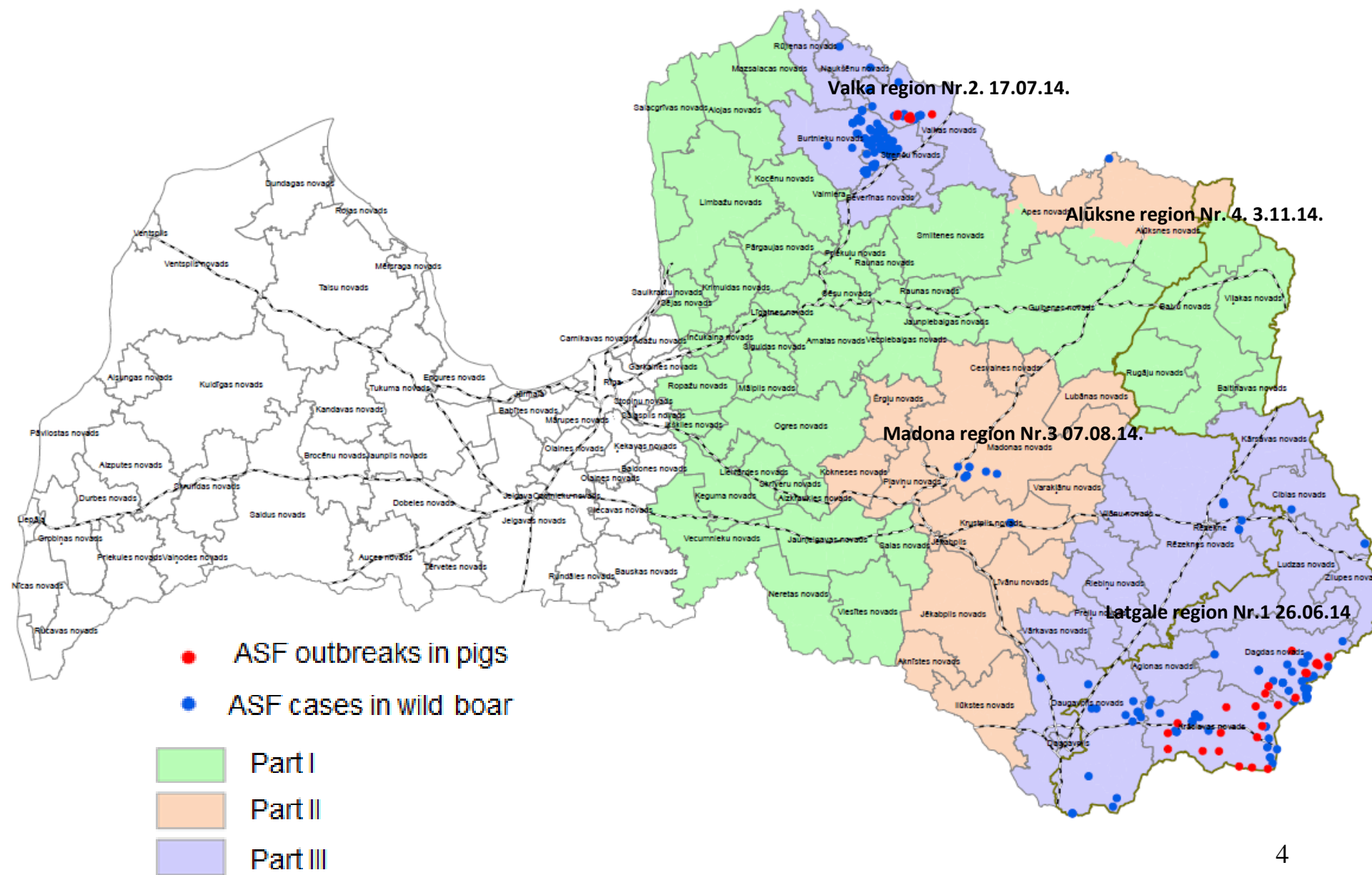
First outbreak – 26.06.2014.

- Domestic pigs - **32** outbreaks
- Destroyed - **564** pigs
- Wild boar - **217** (178 dead; 39 hunted)
- **13** counties and **34** parishes affected

2015 (by 20th November)

- Domestic pigs - **10** outbreaks
- Destroyed – 213 pigs
- Wild boar - **872** (579 dead; 293 hunted)
- **47** counties and **147** parishes affected

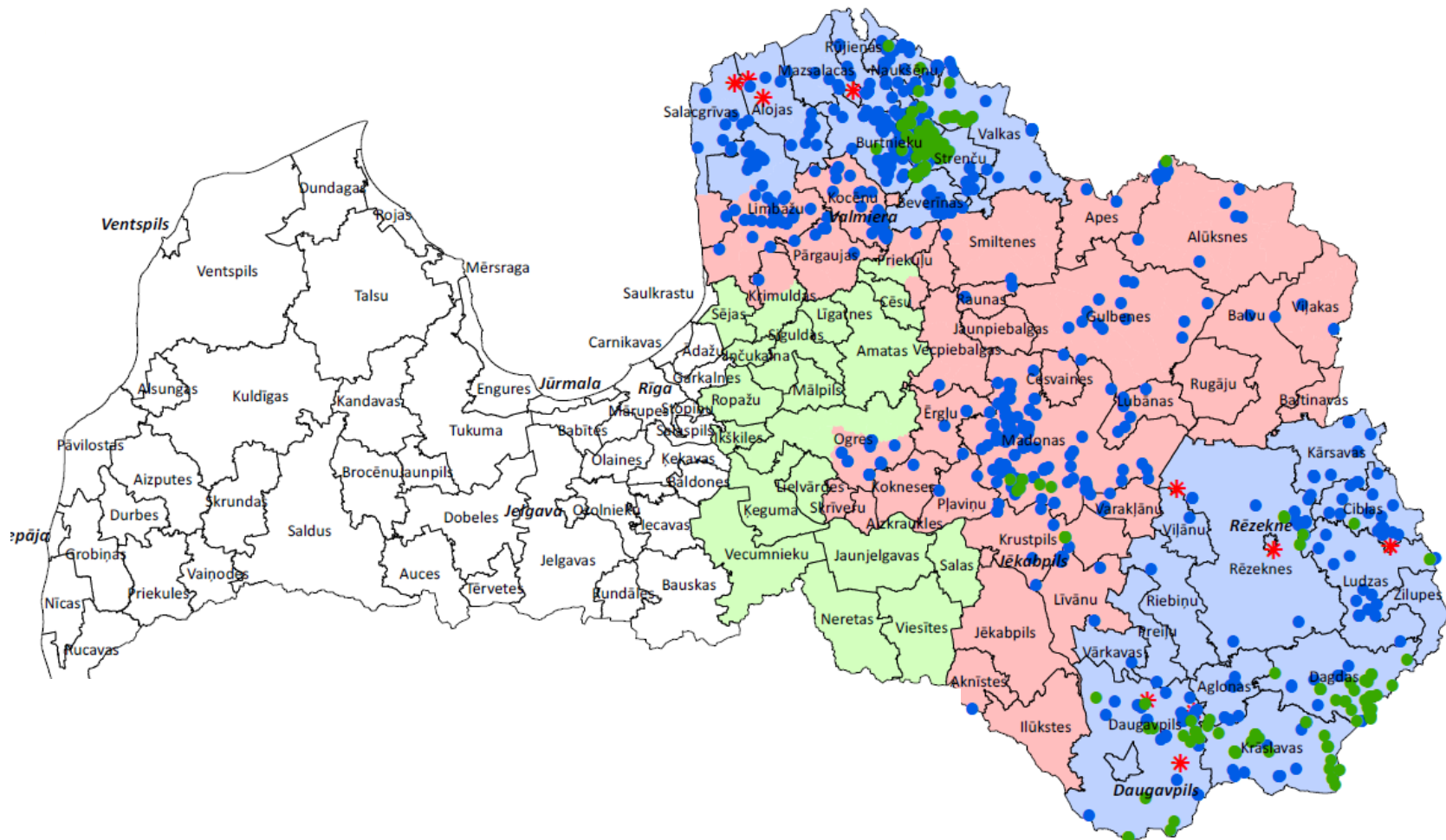
ASF in wild boar and pig farms - summary 2014 and restriction territories according to Decision 2014/709/EU





ASF CASES AND OUTBREAKS 2014 - 2015 (I-X)

Pārtikas un veterinārais
dienests

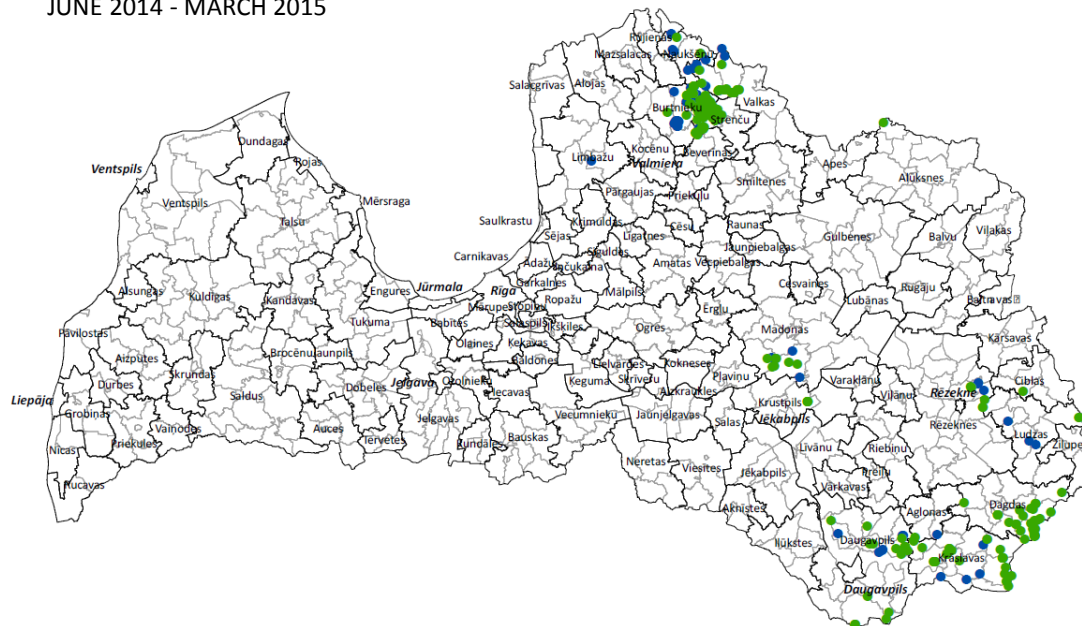




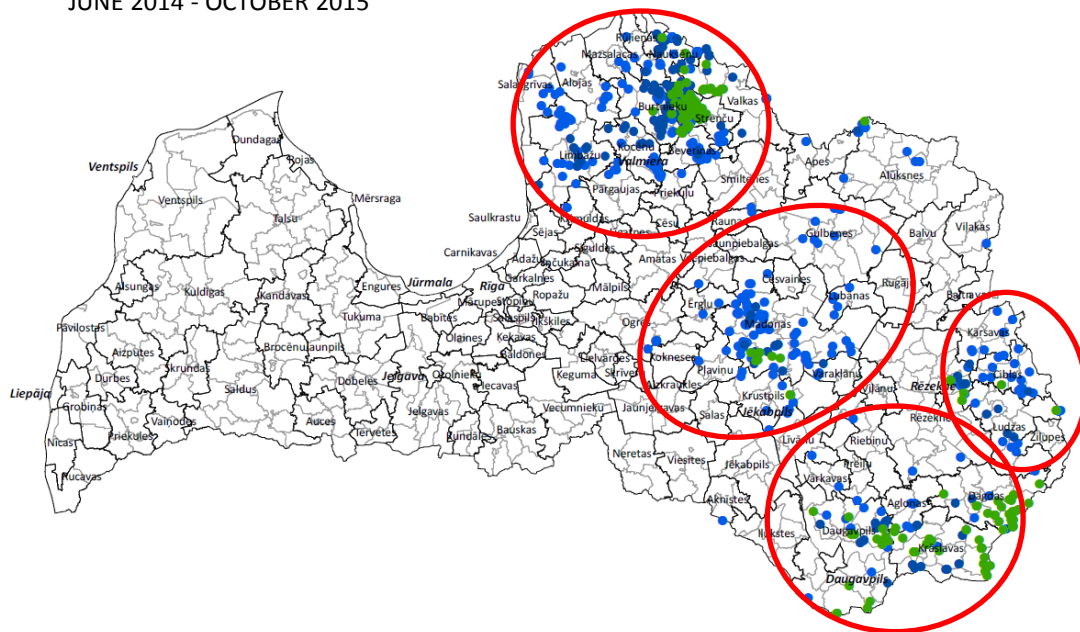
Food and
Veterinary Service
Republic of Latvia

ASF WILD BOAR: Natural spread & seasonal patterns

JUNE 2014 - MARCH 2015



JUNE 2014 - OCTOBER 2015

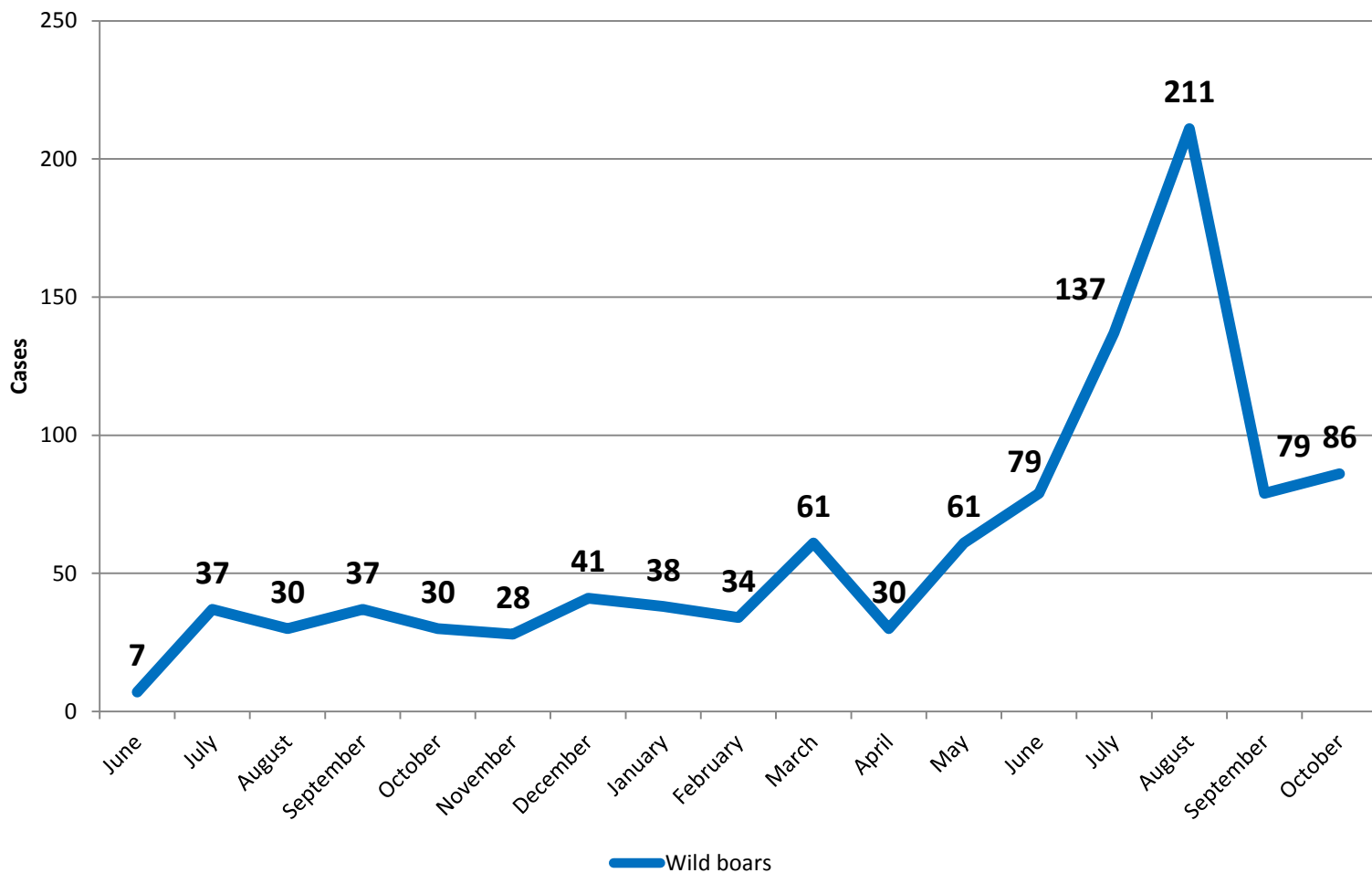




Pārvalsts un veterinārais
dienests

NUMBER OF ASF CASES PER MONTH

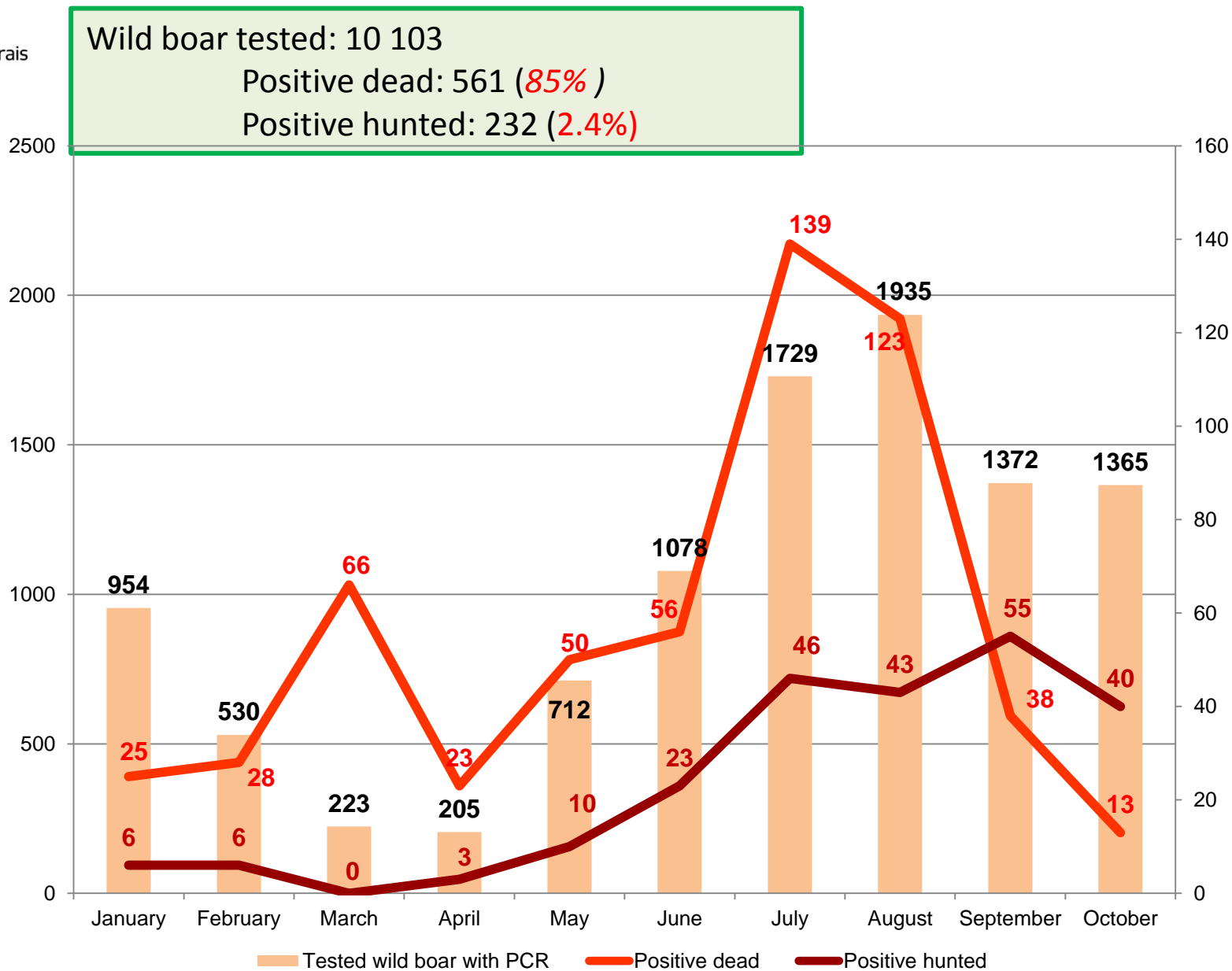
Number of ASF cases in wild boar
are closely related to wild boar
biology





Pārīkšanas un veterinārais
dienests

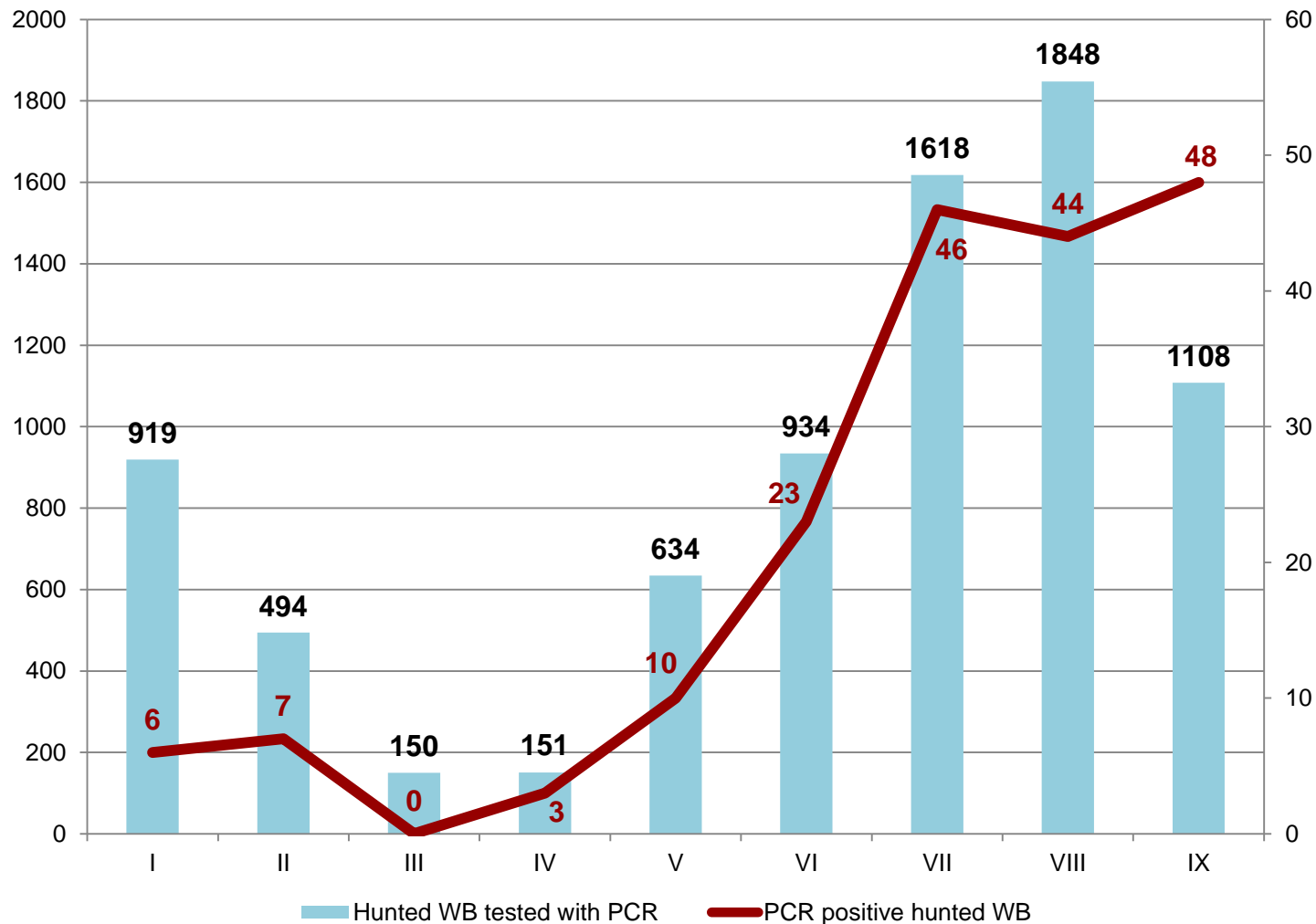
ASF IN WILD BOAR (30.10.2015.)





Pārvalsts un veterinārais
dienests

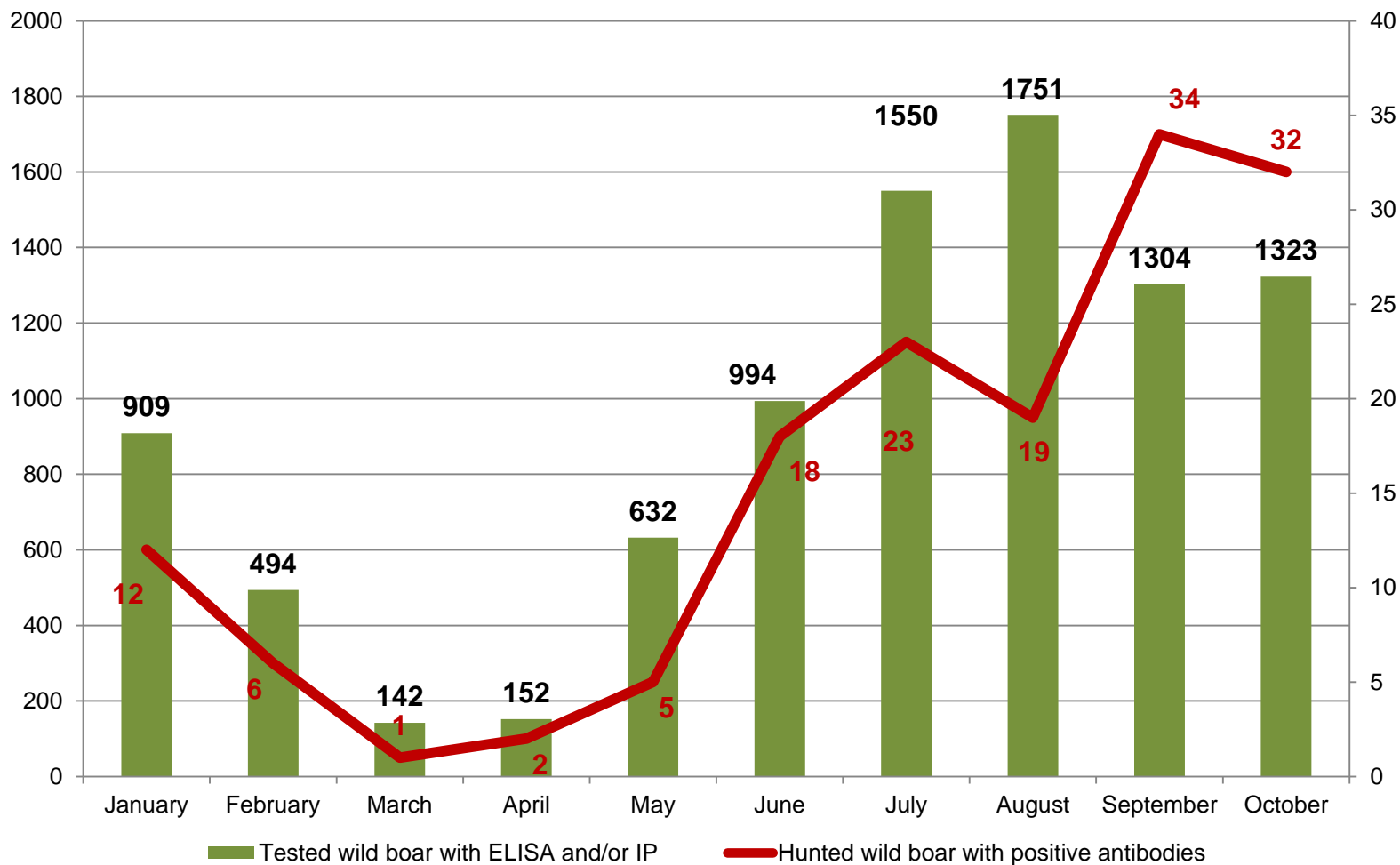
ASF virological surveillance in hunted WB (30.09.2015.)





Pārtikas un veterinārais
dienests

Antibodies detected in hunted WB





Pārtikas un veterinārais
dienests

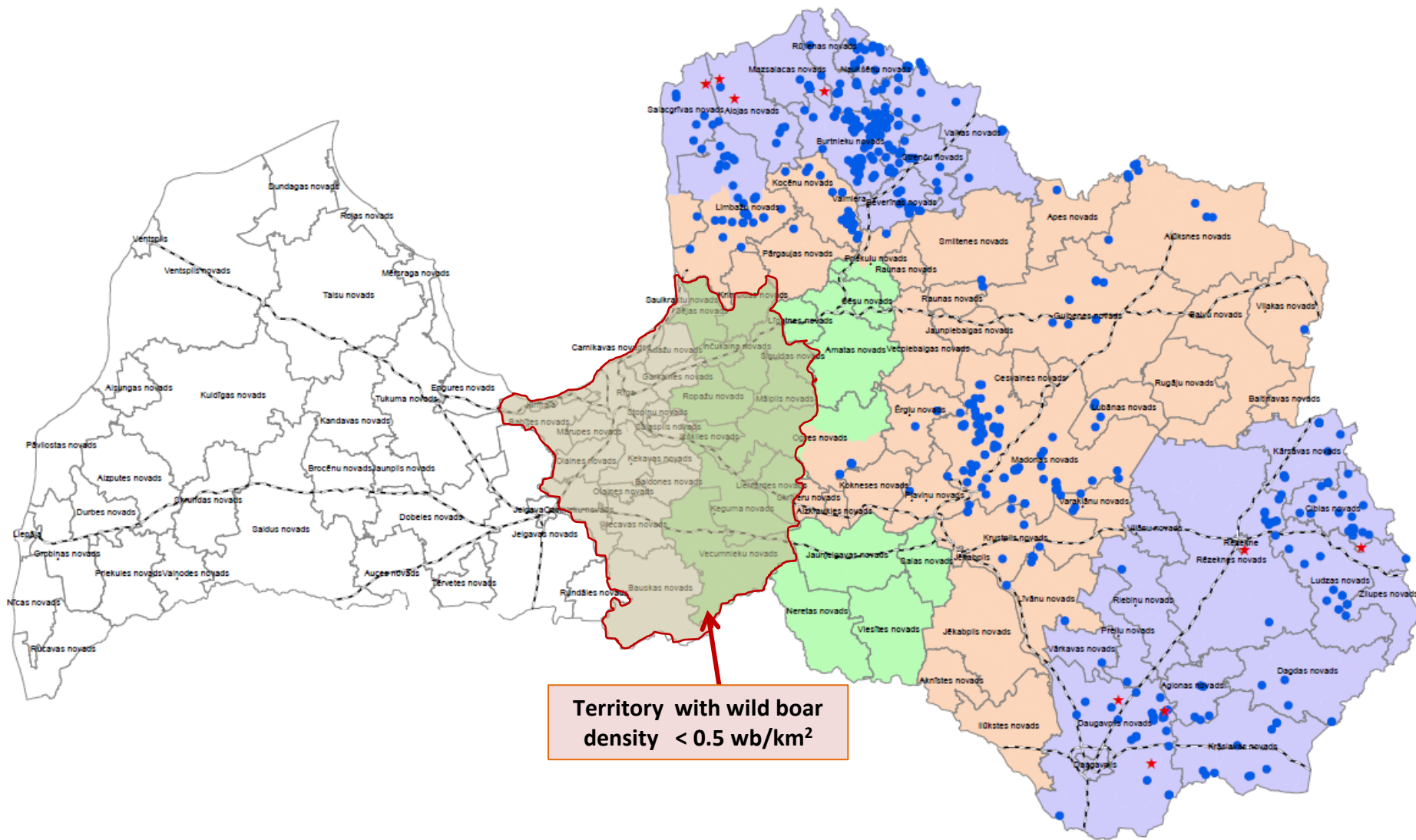
Possible solutions for eradication of ASF in WB population

1. Baiting: (non-sustaining feeding of wild boar): Attracting of wild boar with limited food (e.g. maize) only for the purpose of hunting. Sustained feeding is forbidden.
2. Targeted hunting practices selecting adult and sub-adult females. Reaching a wild boar density of 0,5 wild boar/km² or lower is expected to reduce the spread of ASF.
3. Establishment of a buffer area to establish more stricter requirement for decreasing of wild boar population.



Pārtikas un veterinārais
dienests

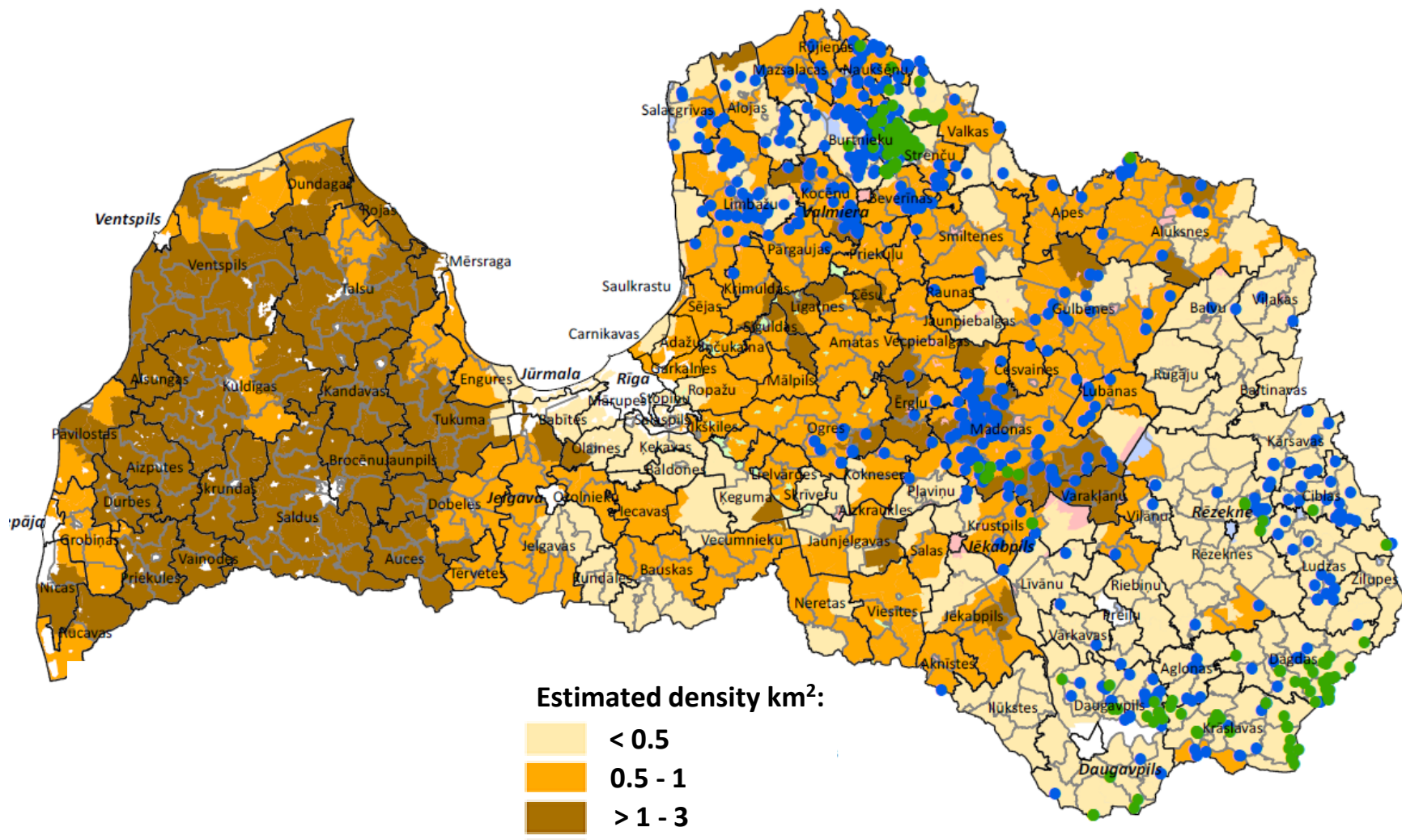
Possible buffer zone to stop ASF





WB POPULATION DENSITY 30.03.2015.

Pārtikas un veterinārais
dienests



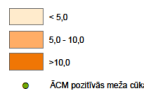
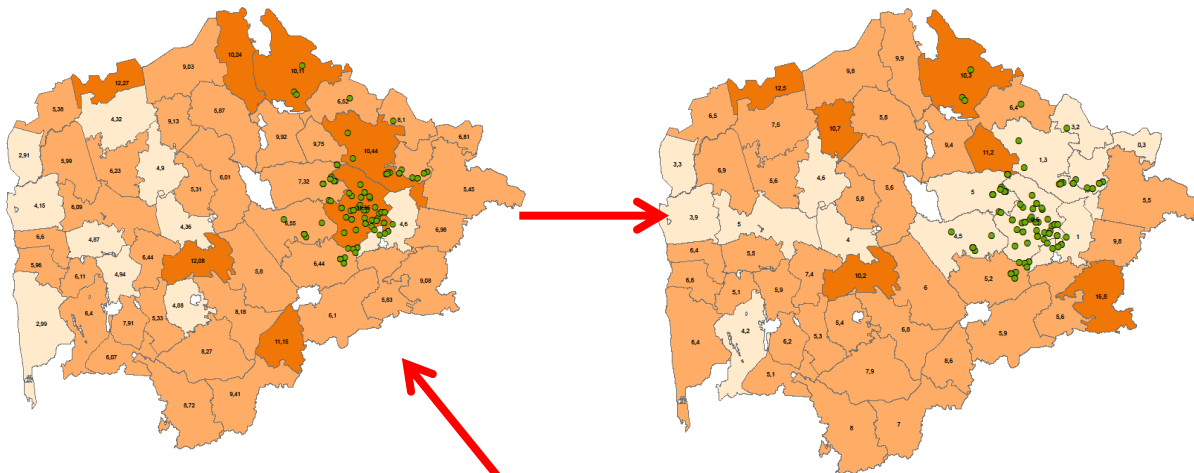


Pārvalsts un veterinārais
dienests

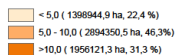
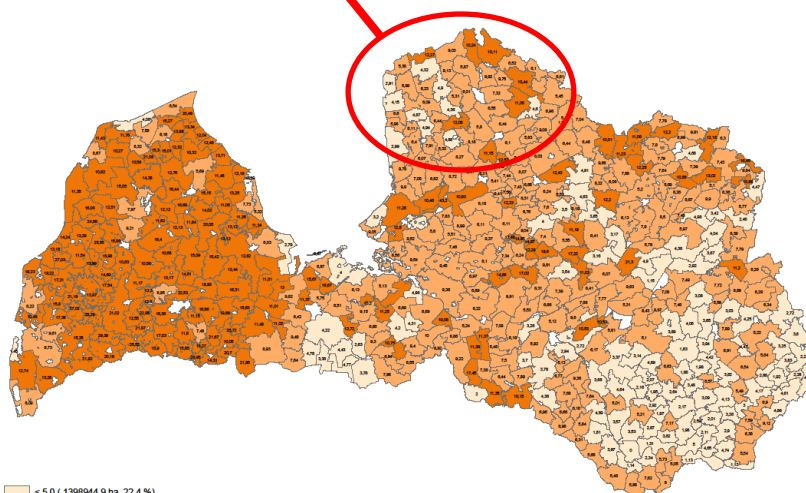
Wild boar density before infection and after few months

30.03.2014.

30.03.2015.



ību sezonā





Food and
Veterinary Service
Republic of Latvia





Food and
Veterinary Service
Republic of Latvia





Food and
Veterinary Service
Republic of Latvia





Pārtikas un veterinārais
dienests



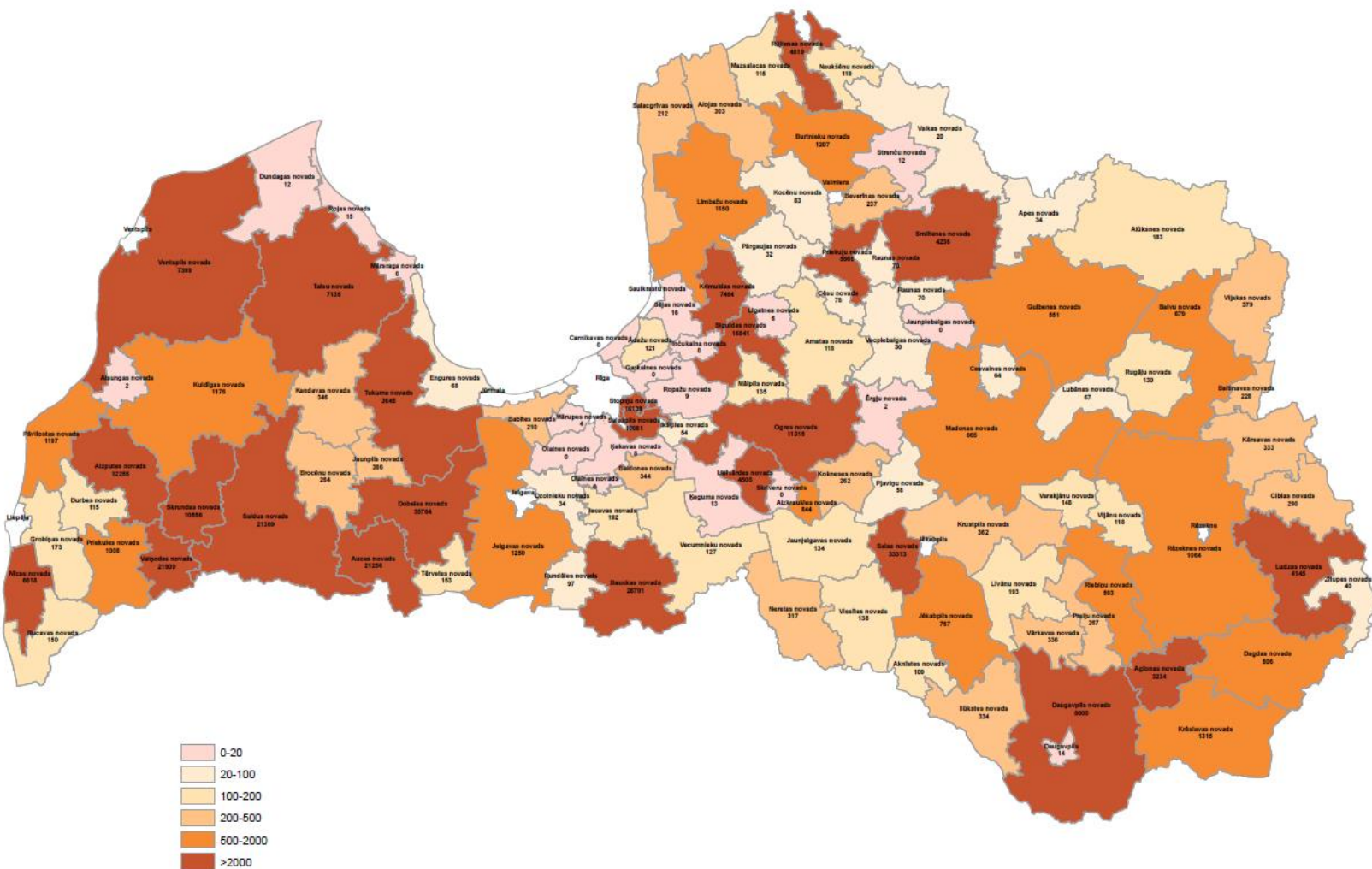
Datums, vieta

prezentācijas nosaukums | 18



Food and
Veterinary Service
Republic of Latvia

Domestic pig density in Latvia





Difficulties = challenges

Data collection:

- Pig farms / pigs ----- wild boar
- Sample Id number ---- several samples to one animal (blood and tissue)
- Information that accompanies samples
- Laboratory systems need to be adapted
- Location of «samples» - GIS coordinates
- Technical issues
- Human mistakes...

Epidemiological analysis:

- Raw Lab data – not ready for epidemiological analysis
- Manual work needed for data preparation for analysis
- Data for mapping (from several institutions)
- Wild boar density – estimation...
-



Pārtikas un veterinārais
dienests

THANK YOU FOR YOUR ATTENTION!

