



Latvian Presidency
of the Council of the
European Union

EU2015.LV

THE LATVIAN PRESIDENCY

1st January – 30th June, 2015

Open Data



Latvian Presidency
of the Council of the
European Union

EU2015.LV

The Main Political Priorities



Competitive Europe



Digital Europe



Engaged Europe

Latvian Presidency of the Council of the European Union

(1 January – 30 June 2015)

- Digital issues are among priorities of Latvia's presidency
- Main directions for the digital priority of the Latvian presidency:
 1. Trust in the Digital single market
 - Protection of Customer Rights
 - Data Protection
 - Eliminating barriers in e-commerce cross-borders
 2. Public sector modernization
 - Effective Use of Digital Technologies
 - Development of Digital Services
 - **Open Data**
 - Development of Skills and Competencies
 - Preservation of the Cultural Heritage
 3. Safety and security in cyberspaceas
 - Accessible, open and reliable cyberspace

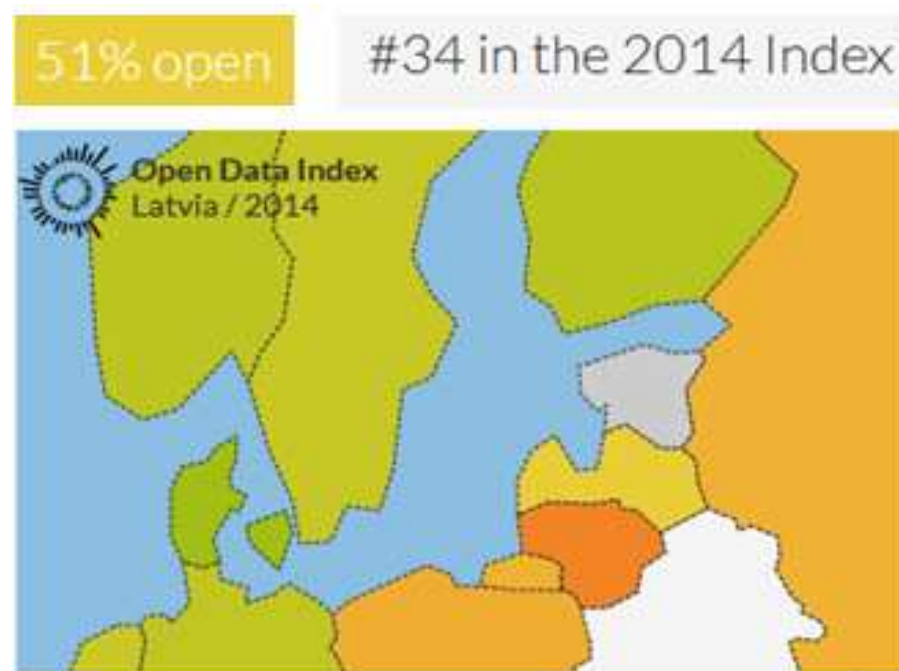
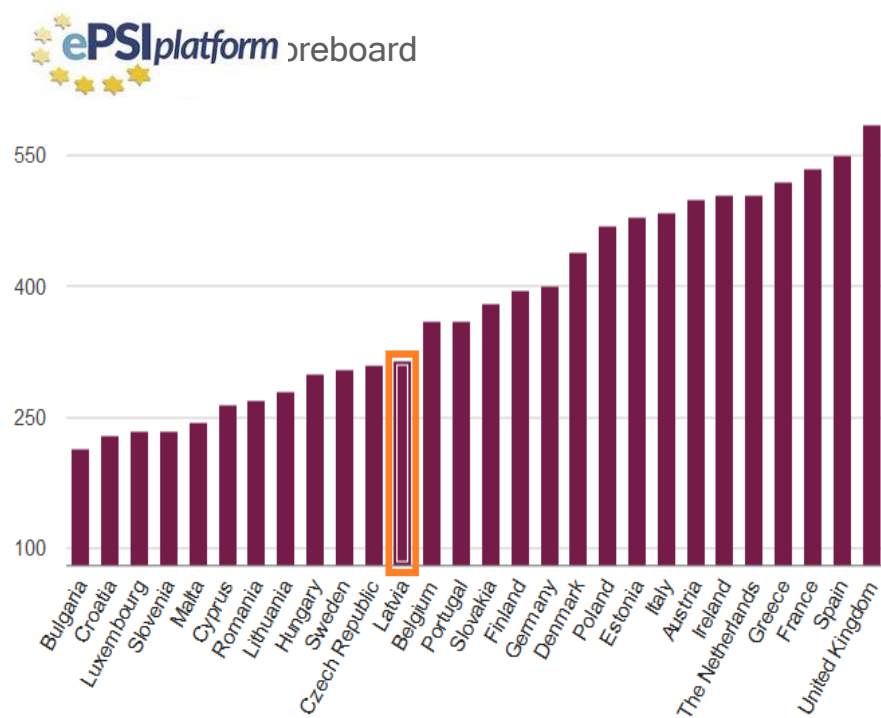
Open Data for economic growth — one of the cornerstones of Latvian e-government strategy.

Information Society Development Guidelines for 2014 -2020

Open Data

- *Open data is data that can be freely used, re-used and redistributed ...*
- **Availability and Access:** the data must be available as a whole and at no more than a reasonable reproduction cost, preferably by downloading over the internet. The data must also be available in a convenient and modifiable form.
- **Re-use and Redistribution:** the data must be provided under terms that permit re-use and redistribution including the intermixing with other datasets.
- **Universal Participation:** everyone must be able to use, re-use and redistribute...

Measuring re-use and open data in Latvia



"Open Europe: Open Data for Open Society"

- The "Open Europe: Open Data for Open Society" conference was one of the most important events in the field of information and communication technology during the Latvian Presidency
- The target audience of the conference is made up of representatives from the public, private and non-governmental sectors who are involved or interested in building open society policy in Latvia and the EU or is the target audience of the conference (16 MS with over 200 participants)
- The aim of the conference is to promote the development and strengthening of the European information society
- Programme and Presentations available:
<http://lata.org.lv/conference-2015/>

Activities:

- Transposition of the **PSI directive** (until July 2015) – Amendments to Freedom of Information Law
- Conceptual **architecture** of public ICT: the basic principles are set, **including re-use** and interfaces for **data exchange**
- Implementation of the architecture: Development of open data / open interface **criteria for new state ICT projects**

Open data: Free for everyone?

Funding the opening of data sets:

- 1) subsidized by income from selling data: political decision to grant government funding
- 2) available for free, technological restrictions: funding for new state ICT projects
- 3) available online for free in unusable formats: guidance or investment in websites

Getting to open data: Concerns about privacy and security

- Starting with unrestricted data (statistics, environment information etc.)
- Anonimisation of data - consulting with the institutions responsible for data protection

Getting to open data: Formats & standards

- Available data in any form is better than no data at all.
- Machine-readable data in open format + metadata is the best practice, but should not be considered as obstacle for data publication.

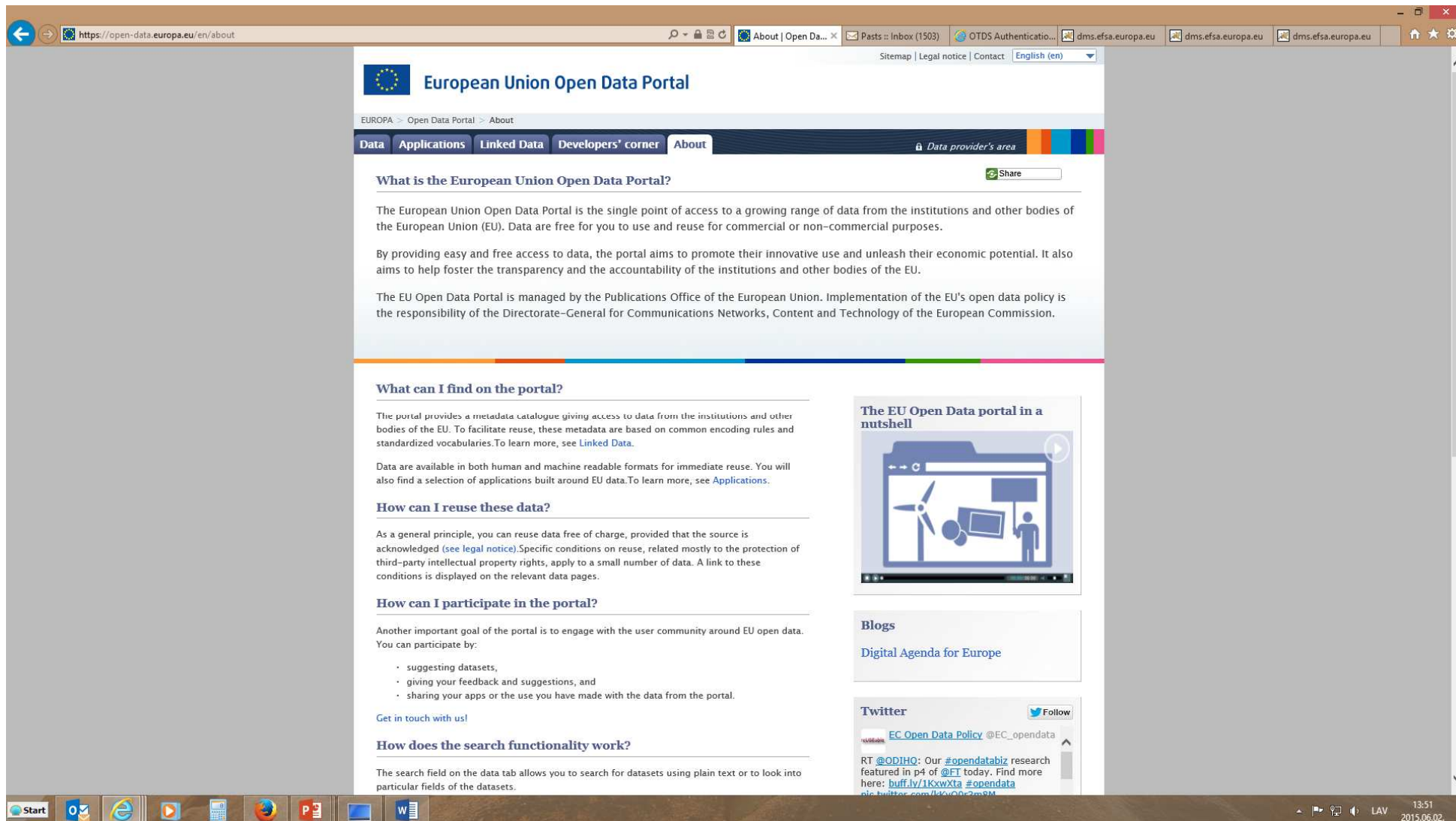
Getting to open data: User involvement

- Interesting public data is used anyway - why not make it machine-readable?
- Involving more users to improve data quality
- Reducing the administrative burden on institution responding to every request for data

Open Data Portal

- <https://open-data.europa.eu/en/data>
- easy access to EU Data
- reuse data for research, an article, an application or something else
- EU Open Data Portal - a single point of access to a growing range of data produced by the institutions and other bodies of the European Union

Open Data Portal



The screenshot shows the European Union Open Data Portal website. The browser address bar displays <https://open-data.europa.eu/en/about>. The page features a navigation bar with links to Data, Applications, Linked Data, Developers' corner, and About. A sidebar on the right includes links to Sitemap, Legal notice, and Contact, along with a language selector set to English (en).

European Union Open Data Portal

EUROPA > Open Data Portal > About

Data Applications Linked Data Developers' corner About Data provider's area

What is the European Union Open Data Portal?

The European Union Open Data Portal is the single point of access to a growing range of data from the institutions and other bodies of the European Union (EU). Data are free for you to use and reuse for commercial or non-commercial purposes.

By providing easy and free access to data, the portal aims to promote their innovative use and unleash their economic potential. It also aims to help foster the transparency and the accountability of the institutions and other bodies of the EU.

The EU Open Data Portal is managed by the Publications Office of the European Union. Implementation of the EU's open data policy is the responsibility of the Directorate-General for Communications Networks, Content and Technology of the European Commission.

What can I find on the portal?

The portal provides a metadata catalogue giving access to data from the institutions and other bodies of the EU. To facilitate reuse, these metadata are based on common encoding rules and standardized vocabularies. To learn more, see [Linked Data](#).

Data are available in both human and machine readable formats for immediate reuse. You will also find a selection of applications built around EU data. To learn more, see [Applications](#).

How can I reuse these data?

As a general principle, you can reuse data free of charge, provided that the source is acknowledged (see [legal notice](#)). Specific conditions on reuse, related mostly to the protection of third-party intellectual property rights, apply to a small number of data. A link to these conditions is displayed on the relevant data pages.

How can I participate in the portal?

Another important goal of the portal is to engage with the user community around EU open data. You can participate by:

- suggesting datasets,
- giving your feedback and suggestions, and
- sharing your apps or the use you have made with the data from the portal.

[Get in touch with us!](#)

How does the search functionality work?

The search field on the data tab allows you to search for datasets using plain text or to look into particular fields of the datasets.

The EU Open Data portal in a nutshell

[Digital Agenda for Europe](#)

Blogs

[Digital Agenda for Europe](#)

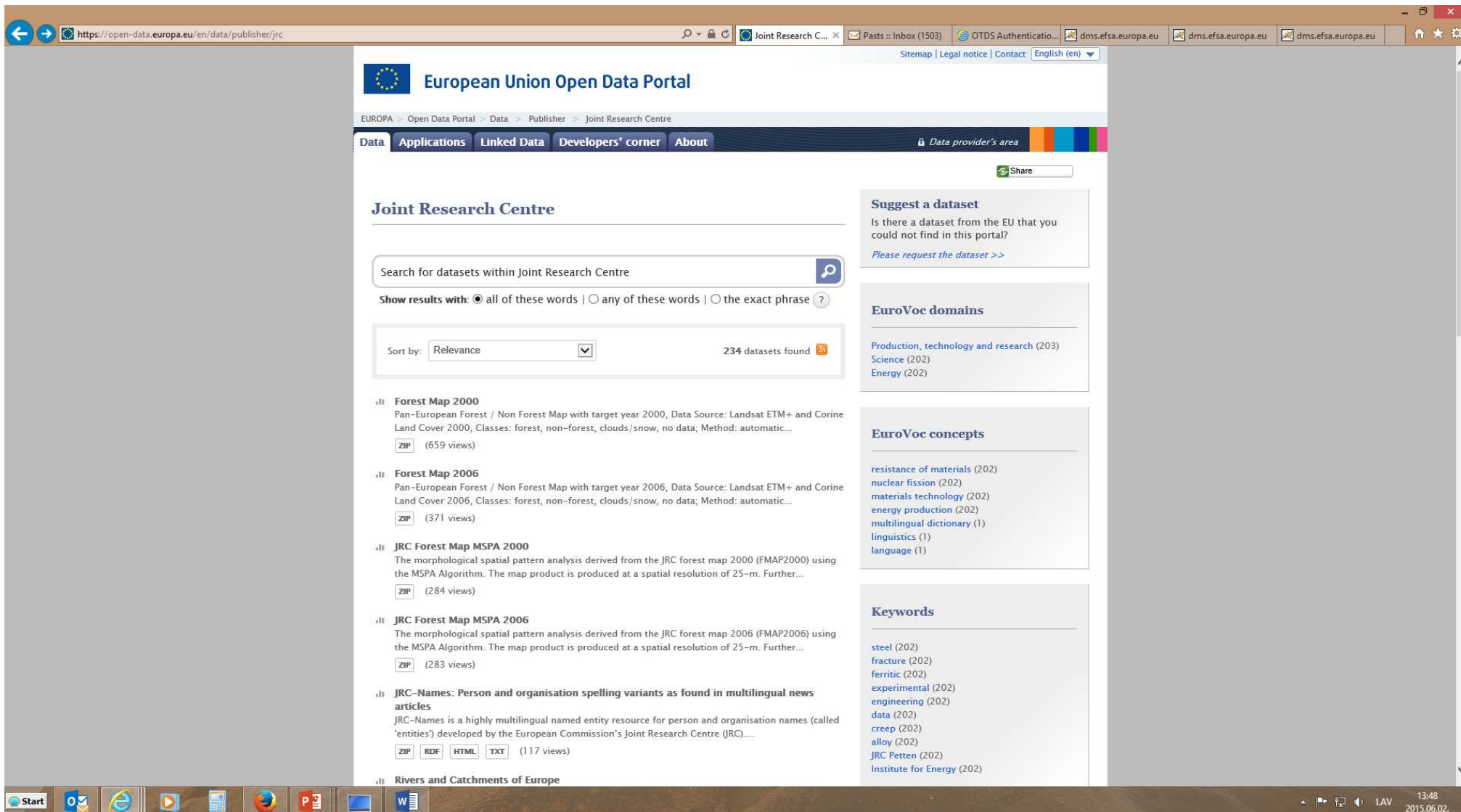
Twitter

[Follow](#)

EC Open Data Policy @EC_opendata

RT @ODIHQ: Our [#opendatabiz](#) research featured in p4 of [@ET](#) today. Find more here: [buff.ly/1KxwXta](#) [#opendata](#) [pic.twitter.com/1KxwXta](#)

Open Data Portal



The screenshot displays the European Union Open Data Portal interface. The browser address bar shows the URL <https://open-data.europa.eu/en/data/publisher/jrc>. The page header includes the European Union flag and the text "European Union Open Data Portal". Below the header, a navigation bar contains links for "Data", "Applications", "Linked Data", "Developers' corner", and "About". A "Data provider's area" link is also visible.

The main content area is titled "Joint Research Centre". It features a search bar with the text "Search for datasets within Joint Research Centre". Below the search bar, there are options to "Show results with:" and a "Sort by:" dropdown menu set to "Relevance". The search results show 234 datasets found.

The search results list several datasets:

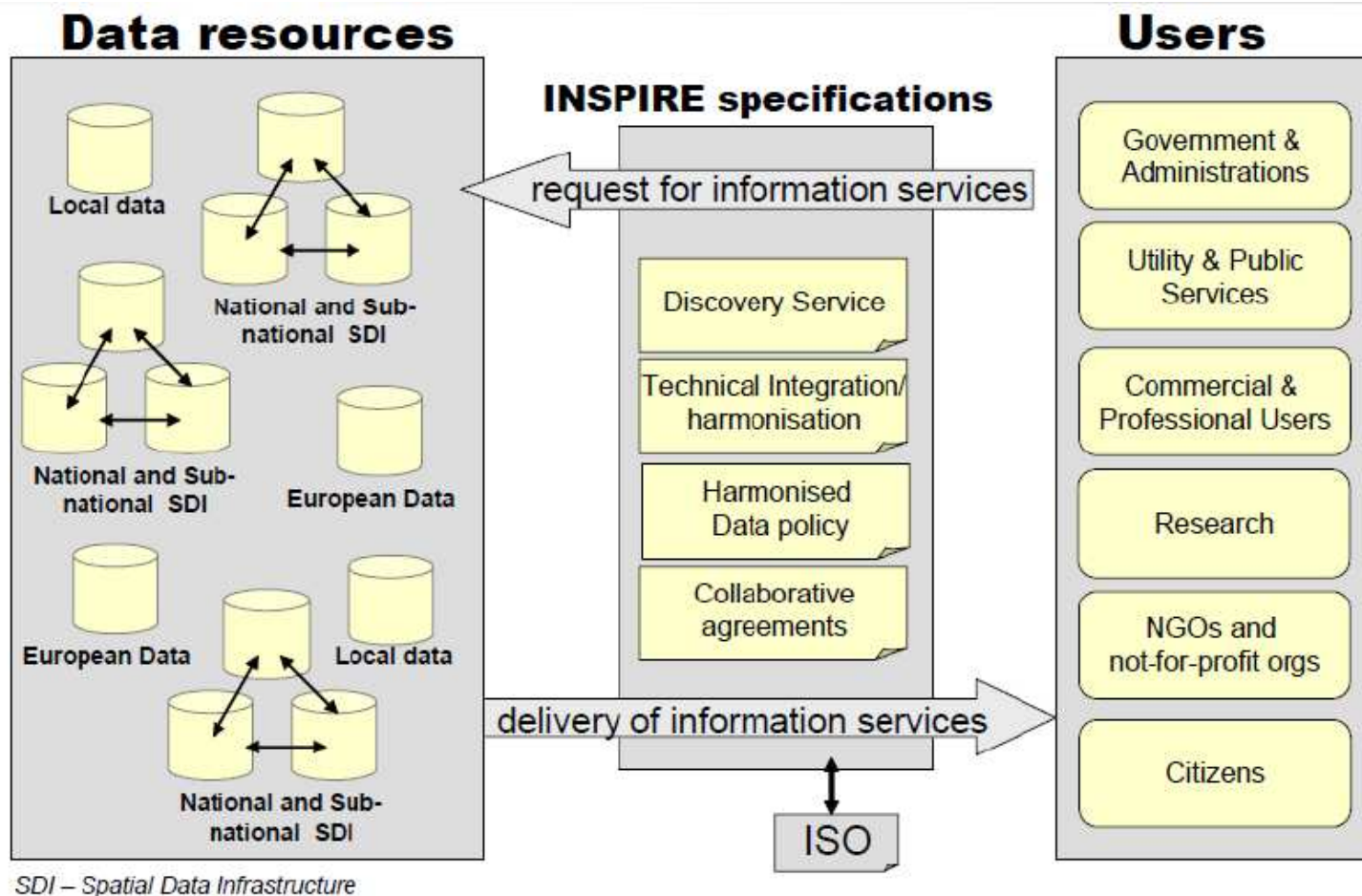
- Forest Map 2000**: Pan-European Forest / Non Forest Map with target year 2000. Data Source: Landsat ETM+ and Corine Land Cover 2000. Classes: forest, non-forest, clouds/snow, no data; Method: automatic... (659 views)
- Forest Map 2006**: Pan-European Forest / Non Forest Map with target year 2006. Data Source: Landsat ETM+ and Corine Land Cover 2006. Classes: forest, non-forest, clouds/snow, no data; Method: automatic... (371 views)
- JRC Forest Map MSPA 2000**: The morphological spatial pattern analysis derived from the JRC forest map 2000 (FMAP2000) using the MSPA Algorithm. The map product is produced at a spatial resolution of 25-m. Further... (284 views)
- JRC Forest Map MSPA 2006**: The morphological spatial pattern analysis derived from the JRC forest map 2006 (FMAP2006) using the MSPA Algorithm. The map product is produced at a spatial resolution of 25-m. Further... (283 views)
- JRC-Names: Person and organisation spelling variants as found in multilingual news articles**: JRC-Names is a highly multilingual named entity resource for person and organisation names (called 'entities') developed by the European Commission's Joint Research Centre (JRC).... (117 views)
- Rivers and Catchments of Europe**

On the right side of the page, there are sections for "Suggest a dataset", "EuroVoc domains", "EuroVoc concepts", and "Keywords".

The bottom of the page shows a Windows taskbar with various application icons and a system clock indicating 13:48 on 2015.06.02.



INSPIRE DIRECTIVE



DIRECTIVE 2007/2/EC OF THE EUROPEAN PARLIAMENT AND OF THE COUNCIL of 14 March 2007 establishing an Infrastructure for Spatial Information in the European Community (INSPIRE)



ANNEX III

SPATIAL DATA THEMES REFERRED TO IN ARTICLES 6(B) AND 9(B)

1. Statistical units

Units for dissemination or use of statistical information.

2. Buildings

Geographical location of buildings.

3. Soil

Soils and subsoil characterised according to depth, texture, structure and content of particles and organic material, stoniness, erosion, where appropriate mean slope and anticipated water storage capacity.

4. Land use

Territory characterised according to its current and future planned functional dimension or socio-economic purpose (e.g. residential, industrial, commercial, agricultural, forestry, recreational).

5. Human health and safety

Geographical distribution of dominance of pathologies (allergies, cancers, respiratory diseases, etc.), information indicating the effect on health (biomarkers, decline of fertility, epidemics) or well-being of humans (fatigue, stress, etc.) linked directly (air pollution, chemicals, depletion of the ozone layer, noise, etc.) or indirectly (food, genetically modified organisms, etc.) to the quality of the environment.

6. Utility and governmental services

Includes utility facilities such as sewage, waste management, energy supply and water supply, administrative and social governmental services such as public administrations, civil protection sites, schools and hospitals.

7. Environmental monitoring facilities

Location and operation of environmental monitoring facilities includes observation and measurement of emissions, of the state of environmental media and of other ecosystem parameters (biodiversity, ecological conditions of vegetation, etc.) by or on behalf of public authorities.

8. Production and industrial facilities

Industrial production sites, including installations covered by Council Directive 96/61/EC of 24 September 1996 concerning integrated pollution prevention and control (1) and water abstraction facilities, mining, storage sites.

9. Agricultural and aquaculture facilities

Farming equipment and production facilities (including irrigation systems, greenhouses and stables).

10. Population distribution — demography

Latvian participation in 4 running European Research projects dealing with Open Data

- **SmartOpenData**
 - Institute of Mathematics and Computer Science of the University of Latvia
- **Foodie**
 - Technology Development Forum, Society, NGO
- **SDI4Apps**
 - Baltic Open Solution Center, Ltd.
 - Zemgale Planning Region
 - Vidzeme Planning Region
- **OpenTransportNetwork**
 - Exigen Latvia, Private Joint Stock Company

Project title: Uptake of Open Geographic Information Through Innovative Services Based on Linked Data

Project acronym: SmartOpenData

Grant agreement no: 603824

Call: FP7-ENV-2013

Funded under: Exploiting the European Open Data Strategy to mobilise the use of environmental data and information

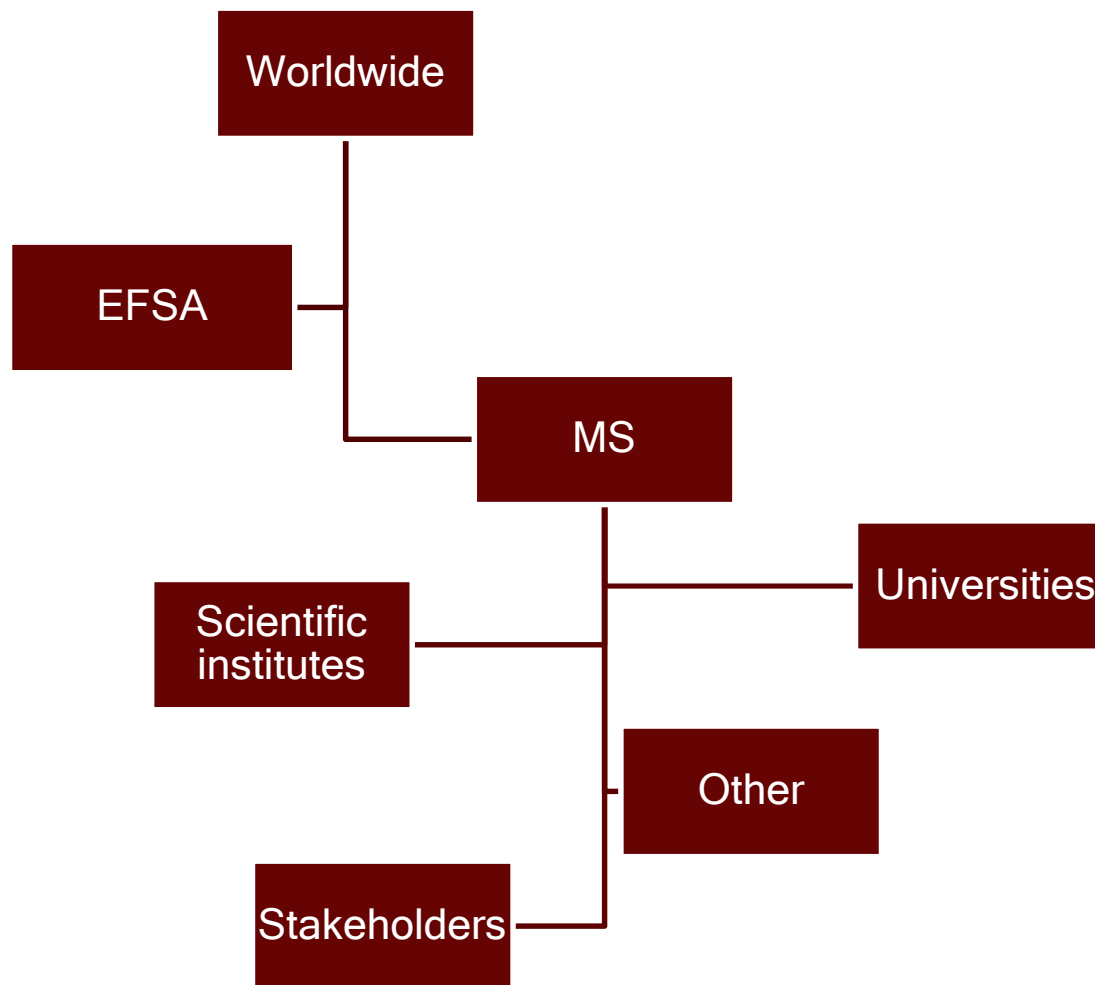
Call: FP7-ENV-2013

Total budget: EUR 3,325 m

EU contribution: 2, 335

Duration: 01/11/2013 - 31/10/2015

Open Data levels from food safety, AHAW RA perspective ...



More information

Presidency website

- www.eu2015.lv

Twitter

- [@ES2015LV](https://twitter.com/ES2015LV)

Welcome Video

- <http://youtu.be/CtnlUr8Q4E4>





Latvian Presidency
of the Council of the
European Union

EU2015.LV

Thank you for your attention!

Paldies!

