



Seconded National Expert in EFSA: The Cyprus Experience

Georgios Stavroulakis

EFSA Focal Point

State General Laboratory (SGL)

Ministry of Health, Cyprus



57th Focal Point Meeting, online
12-13 February 2025





Seconded National Expert in EFSA



- Start date: **1 October 2022**
- End date: **30 September 2023** (One-year Contract)
- Seconded National Expert in Risk Assessment Logistics (RAL) Unit
- Familiar place and people (EFSA Focal Point of Cyprus since 2010!)

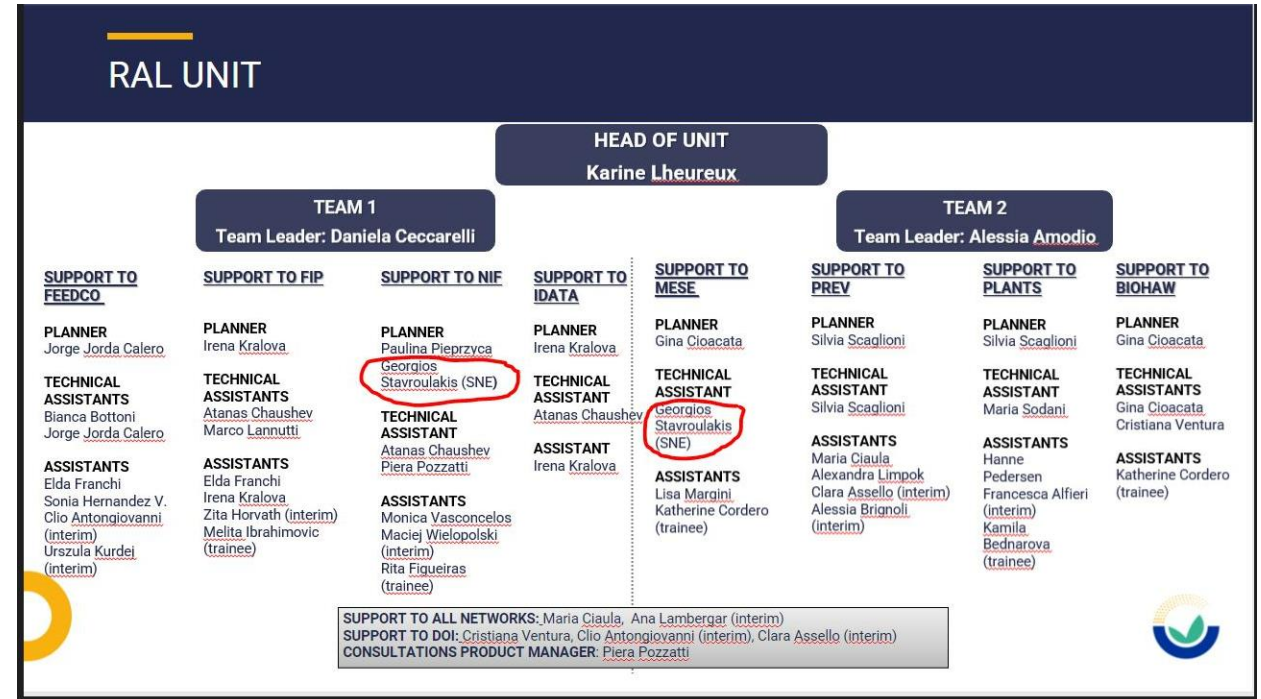




Tasks in RAL



- Support to NIF
 - ✓ Planner: Handling the planning and monitoring activities requested all year long, preparing monthly update status report to the Unit
 - ✓ Generic Mandates: Handling the tasks related to GM, liaising with the Unit
- Support to MESE
 - ✓ Generic Mandates
- Horizontal task
 - ✓ Responsible person of the Framework Contract on the logistical support during risk assessment phase





Training activities



- Wellbeing Learning Kit: Manage difficult conversations | face-to-face session (16/06/23)
- **Public Speaking: essentials (25-26/05/23, Brussels)**
- Wellbeing Learning Kit: Dealing with things we cannot control | face-to-face session (05/05/23)
- Best practice in contract management (24/03/23)
- Wellbeing Learning Kit: Managing up | face-to-face session (17/03/23)
- Best practice in drafting tender specifications (02/03/23)
- Procurement in a nutshell (09/02/23)



Benefits of working in EFSA



- Working in a European Organisation is quite an experience
- Multicultural environment
- Many opportunities for networking
- Dialogue exercise: Setting performance goals and development plan
- Training Opportunities
- Initiatives that increase personnel's motivation, such as:
 - Flexible working hours / Teleworking
 - EFSA Away Day / Get-togethers with Unit staff
 - Specific leave arrangements, e.g. for National Elections



ACKNOWLEDGEMENTS

- Dr. Stelios Yiannopoulos, Ex-Director of SGL
- General Director of the Ministry of Health
- Ministry of Finance of the Republic of Cyprus
- EFSA