

94TH ADVISORY FORUM
BUDAPEST, 04-05 DECEMBER 2024

AGGREGATE EXPOSURE ASSESSMENT

Setting the scene

Bruno Dujardin

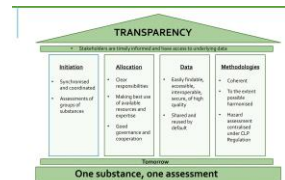
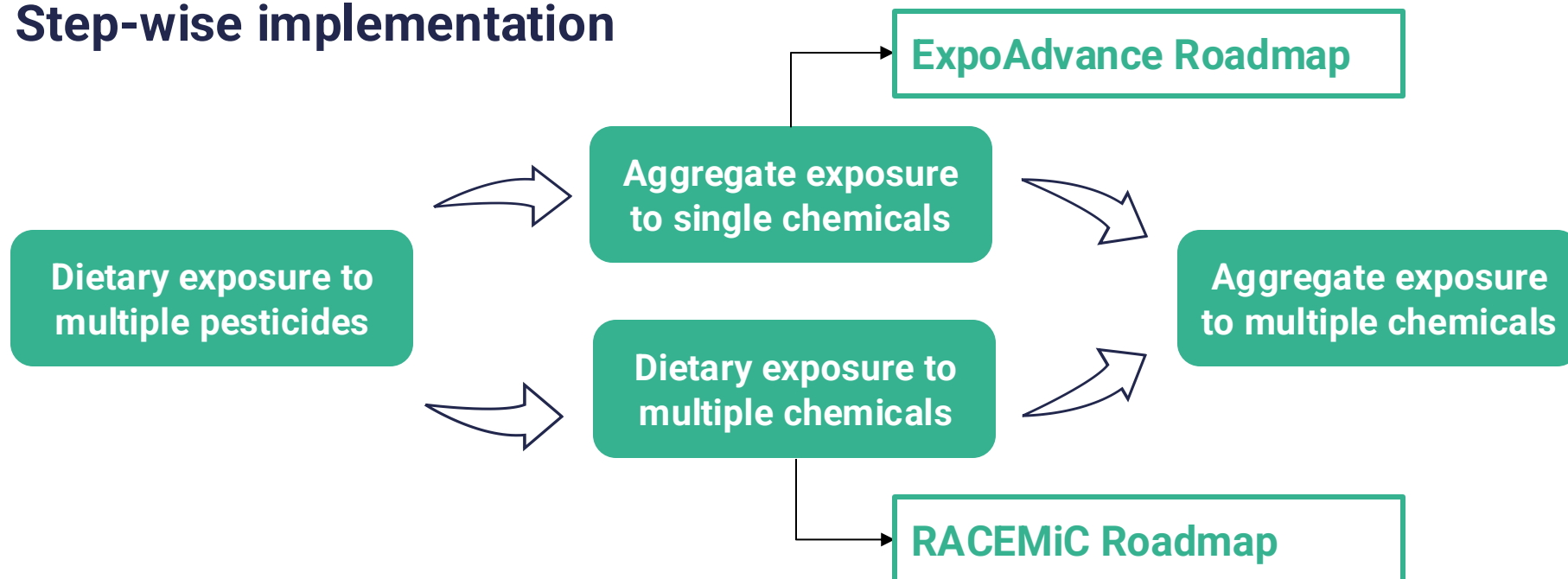
Methodology & Scientific Support Unit

AGGREGATED EXPOSURE ASSESSMENT | BREAKING THE SILOS

Vision

By 2030, EFSA and partners will be equipped for the routine implementation of human health **risk assessment to multiple chemicals, across EFSA's domains of activity**. Harmonised tools and consolidated data are available for a structured and efficient assessment of both dietary and non-dietary exposure to multiple chemicals. Available methods are fit-for-purpose and address requirements from the sectorial legislations.

Step-wise implementation



EXPOADVANCE ROADMAP | OVERVIEW

EFSA Info-session May 2024

- Oct 2022
[Theme Paper](#)
- May 2023-
May 2024
Consortium
work

Development of a Roadmap for Action for Advancing Aggregate Exposure in EU (ExpoAdvance)



Lamon L., Doyle J., Paini A., Moeller R., Viegas S., Cubadda F.,
Hoet P., van Nieuwenhuyse A., Louro H., Dusinska M.,
Galea K.S., Canham R., Martins C., Gama A., Teófilo V.,
Diniz-da-Costa M., João Silva M., Ventura C., Alvito P.,
El Yamani N., Ghosh M., Duca R.C., Siccardi M.,
Rundén-Pran E., McNamara C., Price P.

- June 2024
PARC
meeting
- July 2024
[Publication](#)



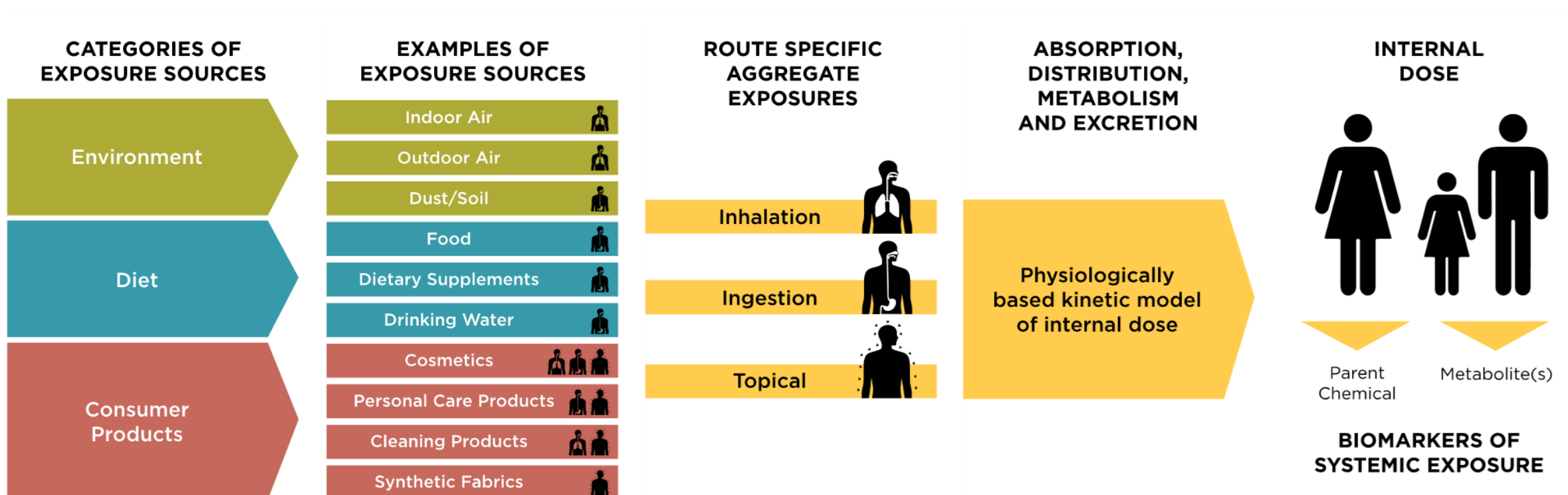
KEY OBJECTIVES

- Identify **key aspects**, **gaps**, and levels of complexity required in **methodologies** and **knowledge** for **aggregate exposure assessment**
- Identify and prioritize **working areas** and **projects** that will enhance EFSA's capacity to efficiently address **requests for aggregate exposure assessment**



EXPOPADVANCE ROADMAP | PRINCIPLES

AGGREGATE SYSTEMIC EXPOSURE



EXPOADVANCE ROADMAP | PROPOSED PROJECTS

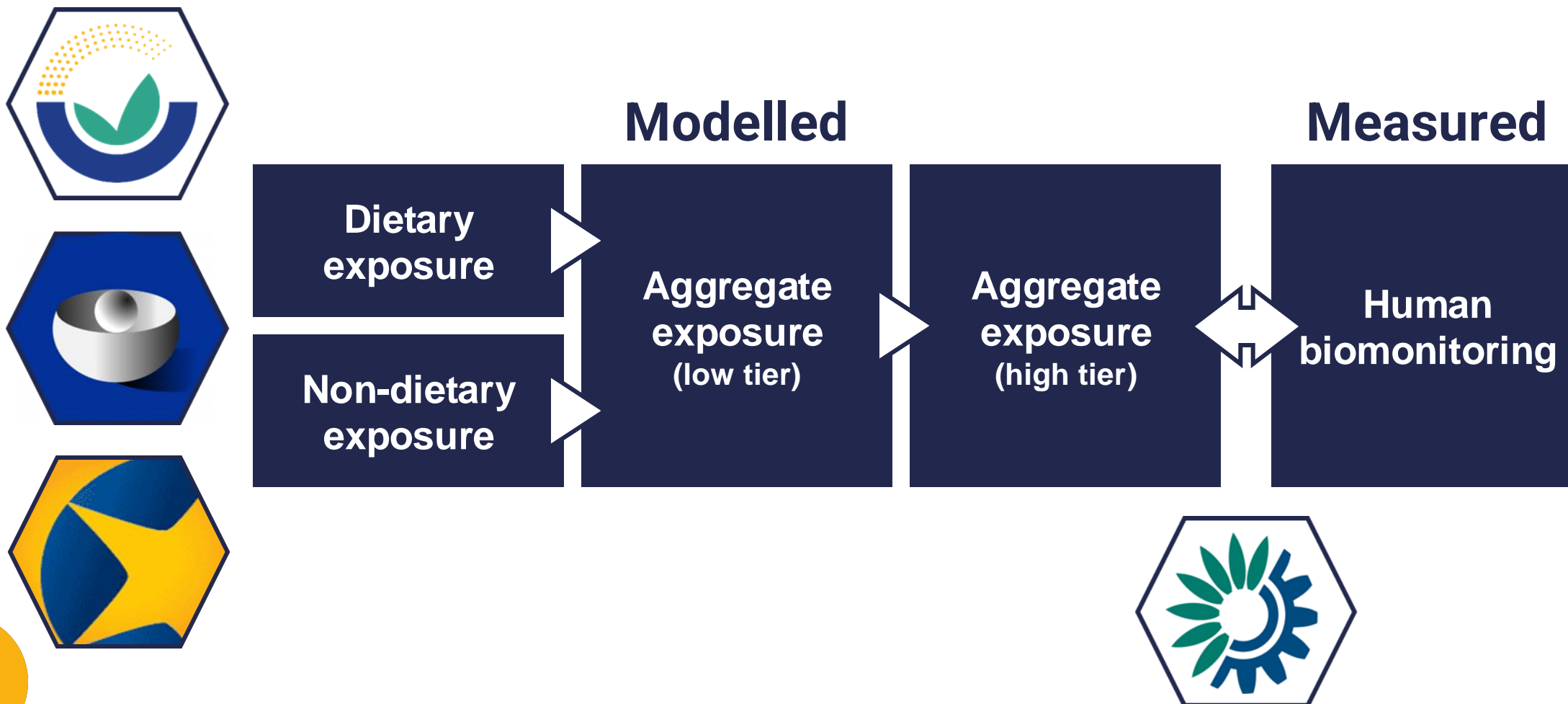
Project proposal

Working area

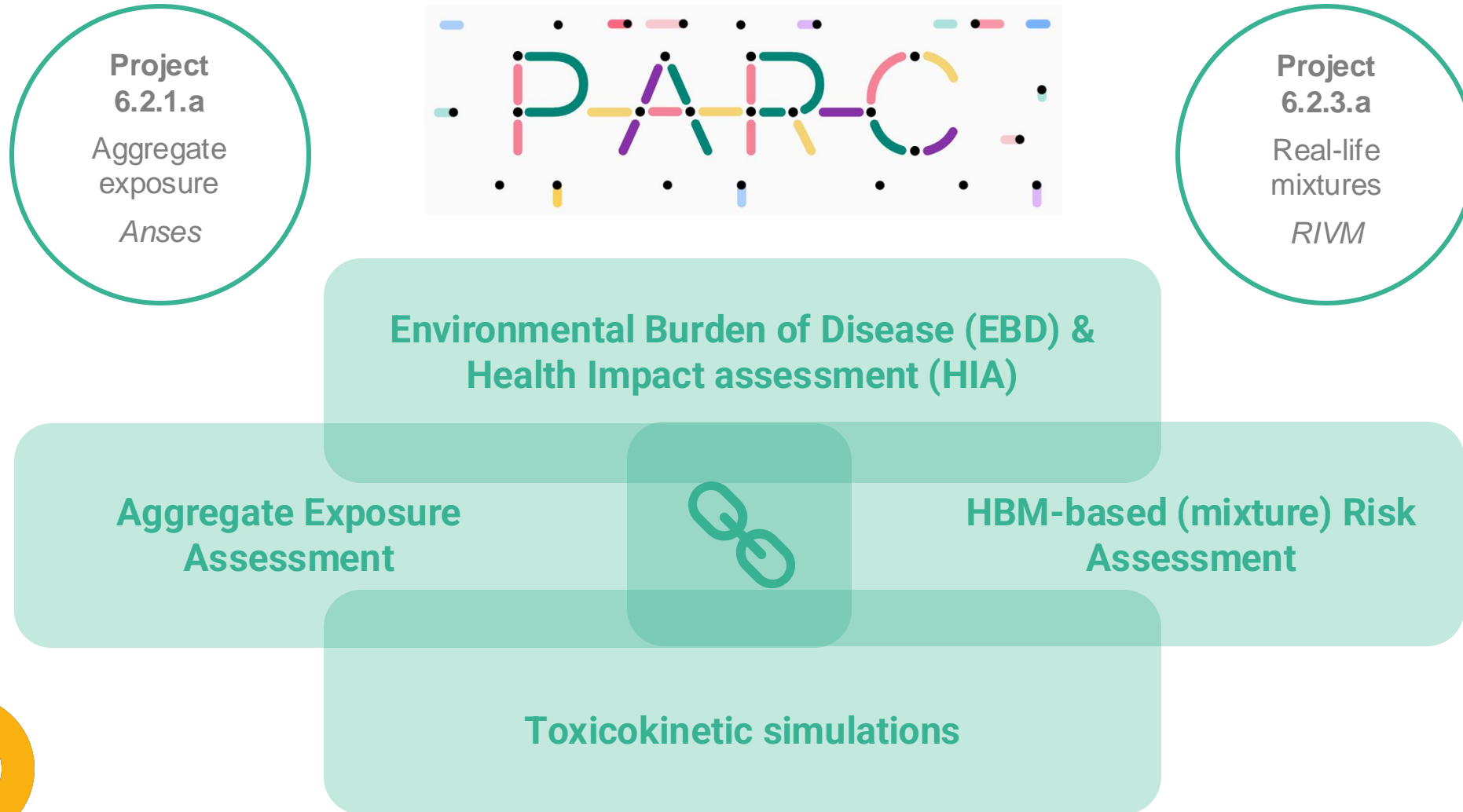
P1. AEA Methodological framework	Framework and Guidance	→ Foundation	
P2. AEA Open access model system	Methodology		
P3. Higher tier probabilistic aggregate exposure model and human variabilities	Methodology		
P4. Human biomonitoring	Methodology		
P5. Data platform	Data generation, collection, organization, and curation		
P6. AEA Model System: forward and reverse dosimetry	Methodology		
P7. Exposure and risk repository	Data generation, collection, organization, and curation	Framework and Guidance	
P8. AEA Prioritization	Methodology	Data generation, collection, organization, and curation	Innovative and additional considerations



EXPOADVANCE ROADMAP | PROPOSED EU FRAMEWORK



EXPOADVANCE ROADMAP | CONNECTIONS PARC



EXPOADVANCE ROADMAP | ENGAGEMENT ACTIVITIES



EU Agencies

4th Q 2024 - 1st Q 2025

- ECHA: 18.10.24
- EEA: t.b.c
- EMA: t.b.c



Member States

94th AF meeting: 4-5.12.24



Other Actors

Ongoing



AGGREGATED EXPOSURE ASSESSMENT | LEAD

Q1 2024

Q2 2024

Q3 2024

Q4 2024

Q1 2025

Q2 2025



Dietary exposure assessment

EFSA Scientific Report
(dietary exposure only)



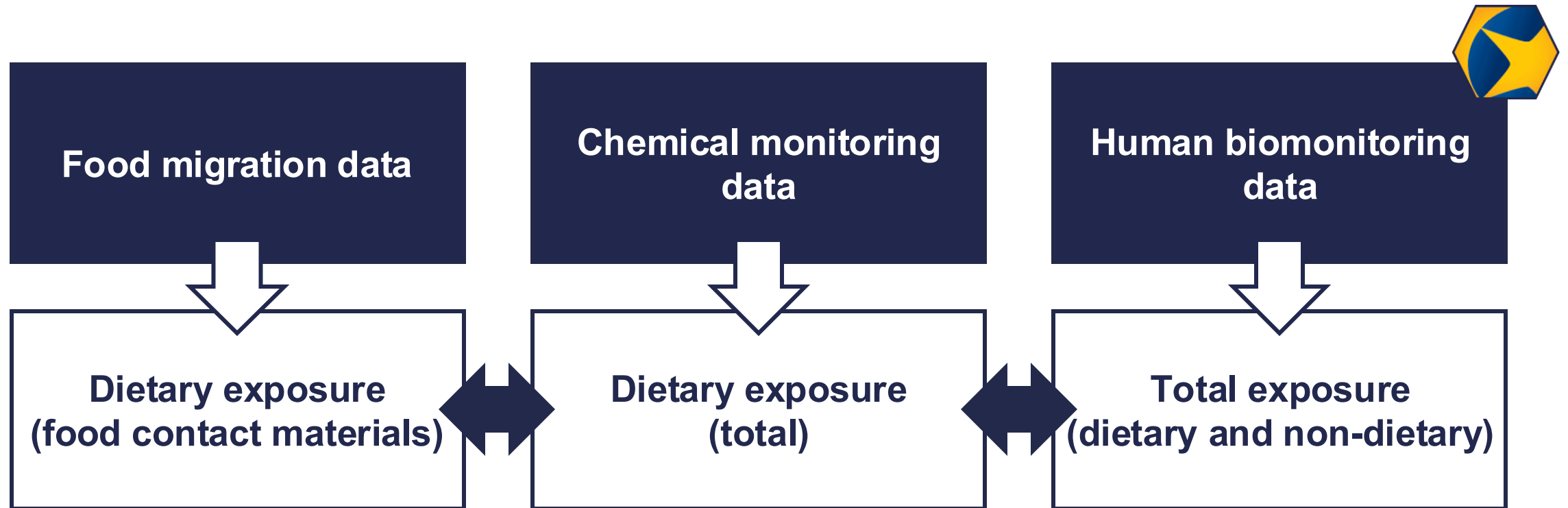
Non-dietary exposure assessment

EEA Report
(burden of disease)



AGGREGATED EXPOSURE ASSESSMENT | PHTHALATES

Mandate for pilot exposure assessment currently under negotiation



AGGREGATED EXPOSURE ASSESSMENT | TODAY'S SESSION

- Understand MS **interest** and willingness to contribute to an EU framework for aggregated exposure assessment
- Exchange on the **experience** gained at MS level in terms of aggregate exposure assessment
- Discuss how MSs can **support** by leveraging on their expertise, utilizing existing models, and providing relevant data



STAY CONNECTED

SUBSCRIBE TO

efsa.europa.eu/en/news/newsletters

efsa.europa.eu/en/rss

[Careers.efsa.europa.eu](https://careers.efsa.europa.eu) – job alerts



FOLLOW US ON TWITTER

[@efsa_eu](https://twitter.com/efsa_eu)

[@methods_efsa](https://twitter.com/methods_efsa)

[@plants_efsa](https://twitter.com/plants_efsa)

[@animals_efsa](https://twitter.com/animals_efsa)



FOLLOW US ON INSTAGRAM

[@one_healthenv_eu](https://www.instagram.com/one_healthenv_eu)



LISTEN TO OUR PODCAST

Science on the Menu – Spotify, Apple Podcast and YouTube



FOLLOW US ON LINKEDIN

[Linkedin.com/company/efsa](https://www.linkedin.com/company/efsa)



CONTACT US

efsa.europe.eu/en/contact/askefsa

