



Update on Advisory Group on Data

Ákos Jozwiak, Hungary

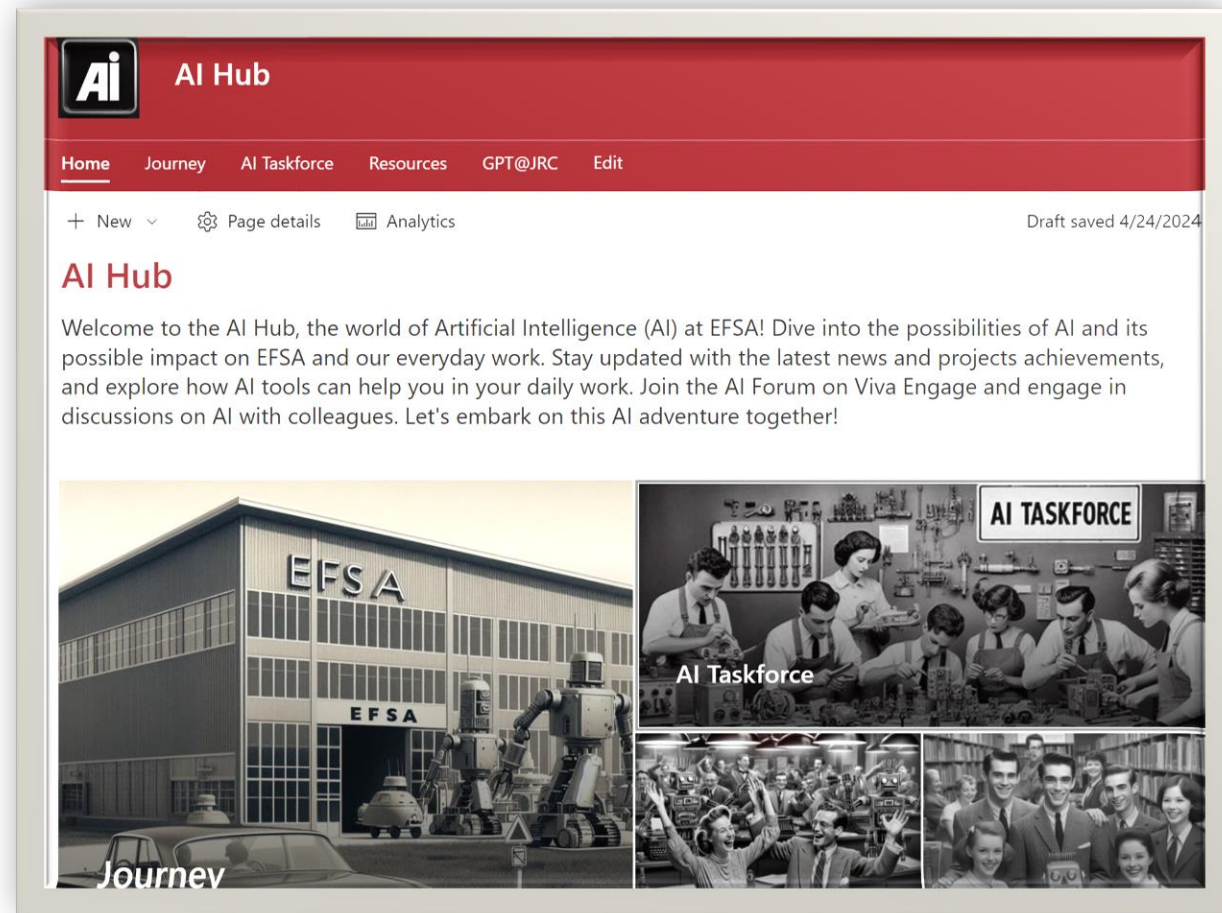
22ND (VIRTUAL) AND 23RD (PHYSICAL) MEETING OF AGOD

- EFSA Data and AI Initiatives
- Subgroups check-in
- Progress of Tailor-made Projects
- Progress of Recommendations
- Communicating AGoD activities

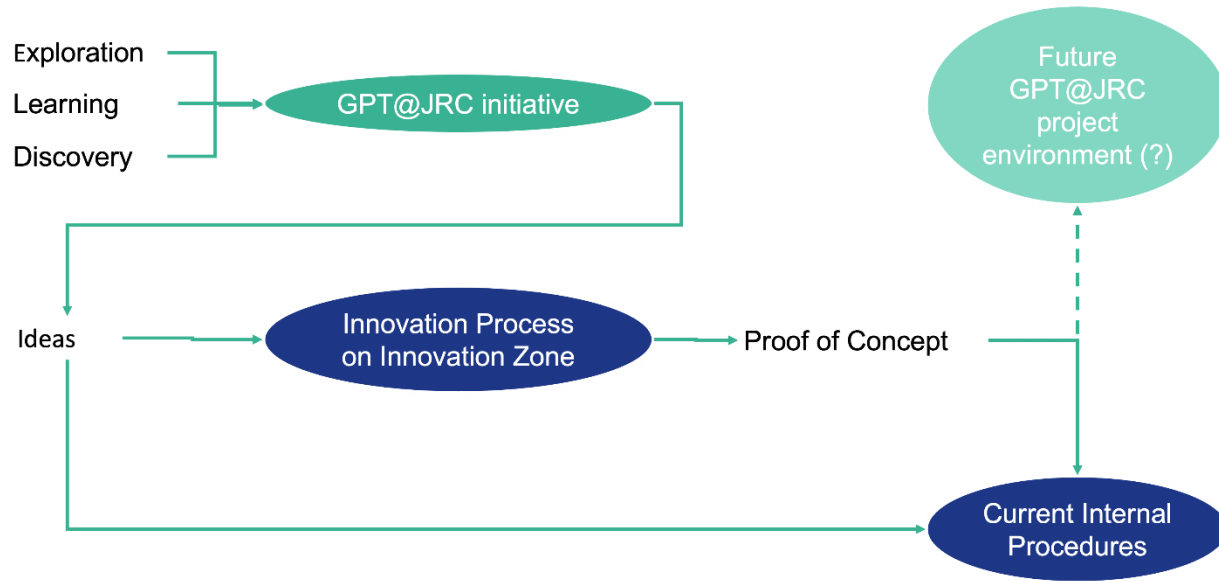


UPDATE AI TASKFORCE

- Communication tool “AI HUB”
- Drafting AI@EFSA document
- Smart pilots
MS Co-Pilot, Journal AI Services, FoodEx SmartCodingApp
- Launched GPT@JRC experiment
- Lots of missions and interactions
(EMA, EUAN NAPO, JRC, etc.)



GPT@JRC & EFSA



- JRC has developed an initiative called GPT@JRC in which they make available several Large language Models (GPT, Mistral, Llama, etc)
- EFSA (limited number of) users to report back their experience through questionnaires

Objectives of the study

- Allow access to a GPT version endorsed by the commission for exploration
- Learn from user journeys
- Form AI savvy users



EFSA DEEP – DATA AND EVIDENCE PROGRAMME

COLLABORATIVE DATA PLATFORMS

IUCLID

EPA13.02-ED-22 IUCLID project (MVP 2) ART

RASE2

EPA13.02-PLH23-DEEP-W3 Harmonized Dossier Ingestion (RASE2)

DC TRACE

EPA13.02-AMU-28 Data Collection Tracing ORPHAN -->IRASFF

FC TRACE

EPA13.02-AMU-29 Food Classification For Tracing ORPHAN -->IRASFF

IRASFF

EPA13.02-PLH23-DEEP-W5 IRASFF

REBUILD

EPA13.02-TS-02 Rebuild Data Framework IMP

SEED

EPA13.02-ALPHA-11 Integrated spatial analysis for biological RA IMP (SEED)

SIGMA2

EPA13.02-BIOHAW-03 SIGMA 2.0 IMP

SUPPORT FOR RISK ASSESSMENT

BIKE2 – PA

13.02-PLH23-DEEP-W2 - BIKE 2 process analytics

BIKE2 – P2P

13.02-ENV23-FIN-W1 - BIKE 2 - Plan to procure

DOI BUILDER

EPA13.02-LA-16 DOI builder

OPEN FOOD TOX 3

EPA13.02-DATA-31 Open Food Tox 3 IMP

Pesticides genotox → OFT

EPA13.02-PREV-03 Update of the EFSA pesticides genotoxicity database RAMPRO --> Open Food Tox

RUEDIS → OFT

EPA13.02-PRES-05 RUEDIS database --> Open Food Tox

CORSA

EPA13.02-FEEDCO-02 CORSA

HOME

EPA13.02-ENV22-RAL-Z1 Harmonised organization of meetings and events

REM

EPA13.02-EXO-12 Records and Correspondence Management Project

REM 2.0

EPA13.02-PLH23-DEEP-W1 Records and Correspondence Management 2

NEW DATA STREAMS

INNOVATION

EPA13.02-PLH23-DEEP-W4 Enhance and boost innovation

EU MENU

EPA13.02-DATA-01 EU Menu

EU FOOD COMP DB

EPA13.02-DATA-29 Creation of Open Access EU Food Composition Database IMP

FEED SYSTEM & CONS DB

EPA13.02-GMO-16 EFSA Feed classification system and feed consumption database

DATA FOR CHEMICALS

EPA13.02-IDATA-03 Monitoring and surveillance data for chemicals: exploring new opportunities

BEES

EPA13.02-PREV-11 Generate data on food consumption of bees

DATA PRODUCTS & SERVICES

WGS

EPA13.02-BIOCONTAM-19 Interoperating 'One Health' system (WGS)

MOPS

EPA13.02-FEED-08 3 pipelines to analyse WGS data applications IMP (MOPS)

Peptide modelling

EPA13.02-GMO-09.04 PROC_HLADQ peptide modelling 2018 RAMPRO

GMP-SEQ

EPA13.02-GMO-13 GM Plant Sequences IMP (GMP-Seq)

MULTI-OMICS

EPA13.02-IDATA-01 Comparative multi-omics study IMP

RNAi

EPA13.02-NIF-01 Risk assessment methodology for RNAi- applications RAMPRO

PRIMo revision 4

EPA13.02-DATA-25 PRIMo revision 4 (Pesticide Residue Intake model) RAMPRO

Open MCRA SPIDO

EPA13.02-DATA-30 OPEN MCRA SPIDO

OECD Metapath

EPA13.02-PRES-01 OECD MetaPath: Incorporation of pesticide residue data RAMPRO

OPEN INTEROPERABLE DATA

CSS_OSOA

EPA13.02-FIP-27 CSS_OSOA

DATA OUTREACH

EPA13.02-PLH21-DATA-Y1 Open Data discovery, access and visualization IMP (DATA outreach)

IDM

EPA13.02-PLH21-TS-Y1 IDM IMP

EFSA REBUILD PROJECT

The **Rebuild DF project** is EFSA's strategic response to the evolving requirements in data collection and management and it will enhance our capabilities through advanced systems for data ingestion and analysis. The goal of the project is to re-engineer the data collections and data analysis systems in EFSA.

OBJECTIVES

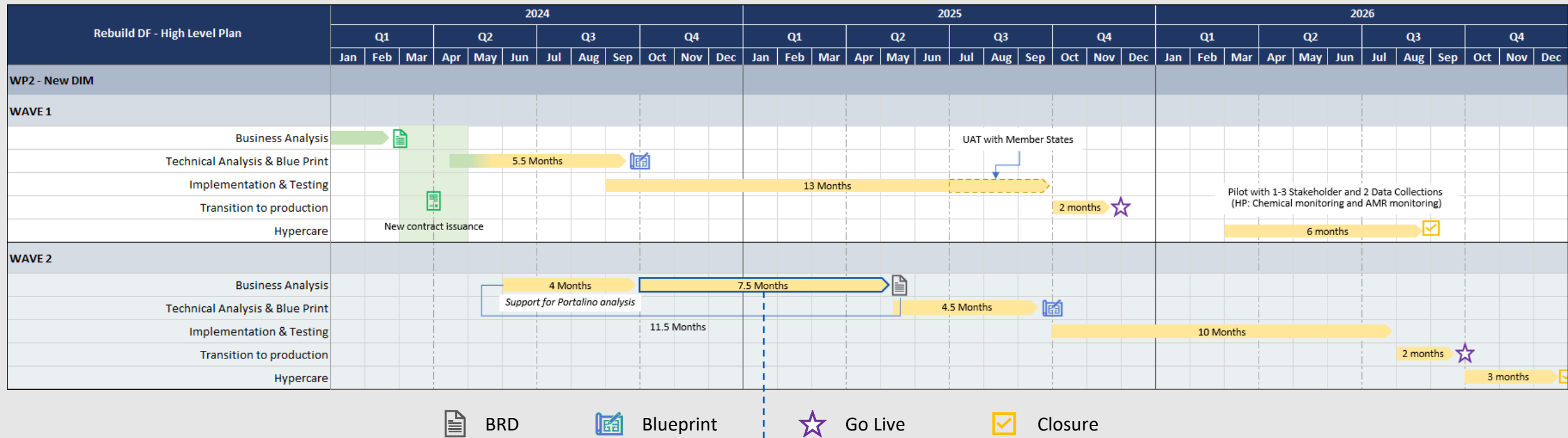
- modernizing the way data is ingested and managed in EFSA;
- increasing the speed of data management systems;
- empowering the autonomy on the way of working and the flexibility of data product users;
- providing users with an environment to prototype an idea or use an existing code which can be modified as needed;
- establishing rules and principles to control proliferation of data products.

MAIN BENEFITS

In the long run, Data Providers of EFSA shall benefit from simplified data collection/connection and EFSA units and its stakeholders shall be empowered to create data products, services, and tools for cloud solutions, whilst maintaining consistency with the overall architectural framework and ensuring that both security and governance are integrated by design.



EFSA REBUILD PROJECT – TIMELINE



Involvement of Member States



NEW PLAN



EFSA REBUILD PROJECT – MS SUPPORT

OBJECTIVES

- Align with MSs expectations.
- Early engagement in the activities related to the implementation of the data ingestion/data management tools.
- Create a solution in line with the MSs needs.
- Maximize the usage/ adoption of the new solution.

PROPOSED ACTIVITIES (DRAFT)

- Attend EFSA-led training sessions to understand the task, expectations, and the new framework's operation.
- Identify requirements list and TO-BE process for new working methods.
- Propose additional actions for the adoption of the solution.

EFFORT EXPECTED

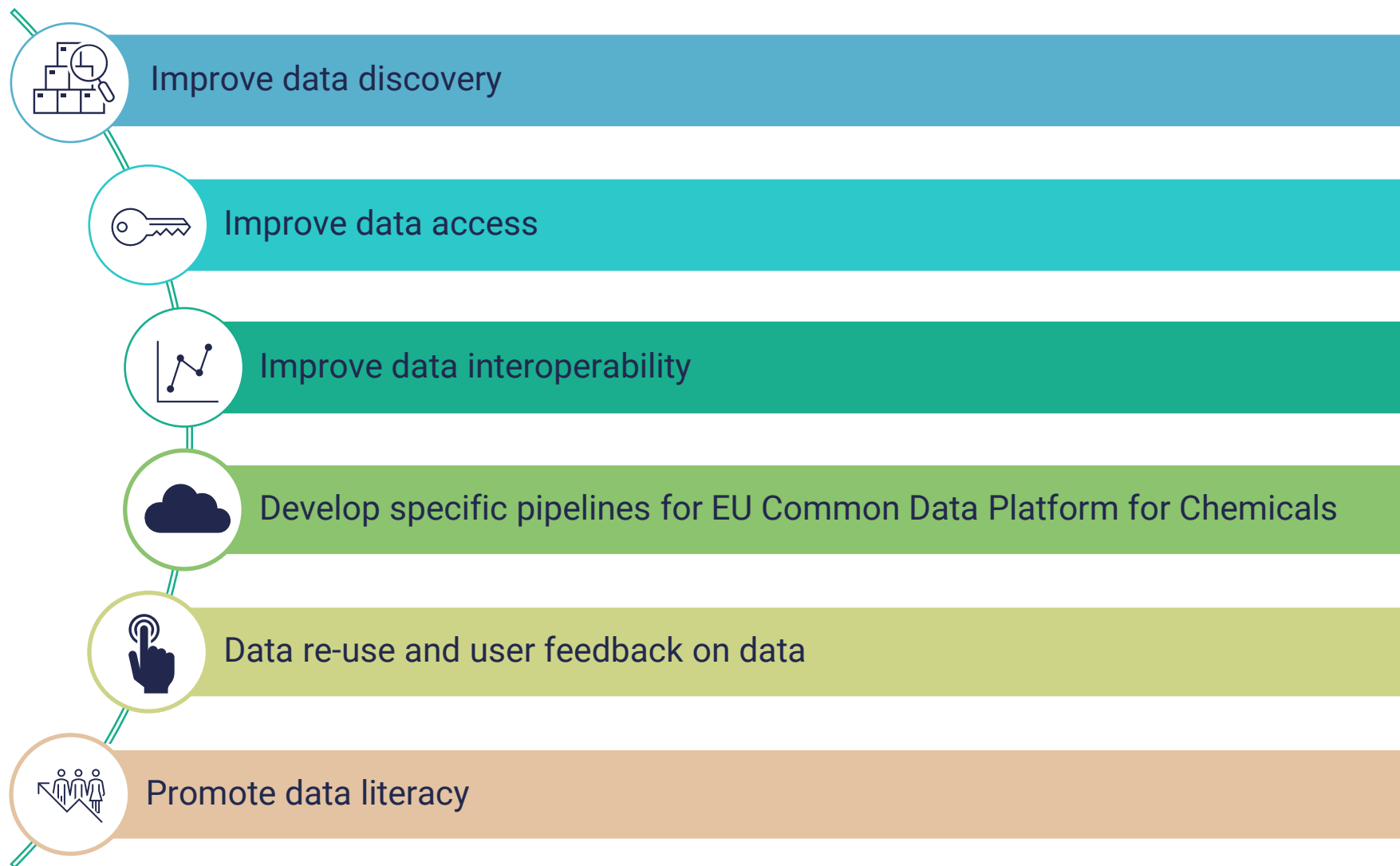
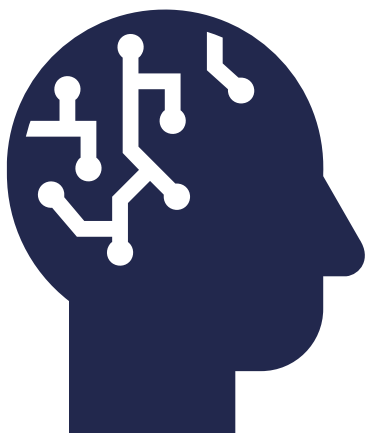
- Effort and activities proposal will soon be finalized and made available to MSs.
(Advanced Draft)



MS support is submitted as the proposal for the Focal Point tailor-made activity.



EFSA DATA OUTREACH PROJECT



EFSA DATA OUTREACH PROJECT SCOPE



MACRO ACTIVITIES

Data Visualisation and Storytelling

Definition and design of data visualisation and storytelling, aiming at creating guidelines for standardised visualisation processes, piloting them with two reports and potential external tools.

Data Outreach Platform

Development of the Data Outreach Platform aiming at creating an innovative, user-focused platform for enhancing EFSA's data discovery and visualisation.

API Portal

Establishment of a secure and scalable API Portal aligned with Data Publication rules by establishing a support community for optimised operations and user satisfaction.

Data Publication Rules

Evaluation of current data sharing protocols to identify improvements, with possible revision of guidelines with stakeholder input prior to implementation.

Data mapping for EU-CDPC Platform

Analysis of the EU Common Data Platform for Chemicals (EU-CDPC) and designing secure data sharing architecture and access mechanisms to ensure regulatory compliance and confidentiality.

Change Management

Ensuring a smooth transition by enhancing data interpretation and self-service analytics, sharing guidelines on data visualisation, organising training sessions and workshops to foster continuous improvement within EFSA and its external network.



PROGRESS ON FOCAL POINT TAILOR-MADE PROJECTS

- Data Model Mapping Tool (Sweden)
Leader: Sweden – Participants: Denmark, Germany, Italy
- Data Model Mapping Tool (Italy)
Leader: Italy – Participants: Denmark, Germany
- Data Capture @Point of Sampling Tool
Leader: Portugal – Participants: Denmark
- Inspections and Samples II
Leader: Netherlands, Austria – Participants: Germany, Portugal, Albania (observer)
- Data Flow Mapping in Member States



DATA MODEL MAPPING TOOL (SWEDEN) – KEY REFLECTIONS



The objectives has been achieved within the allocated budget and timeline



Immense potential of AI technologies, particularly embeddings and large language models



The Data Mapping tool will be able to significantly enhance efficiency, accuracy, and scalability



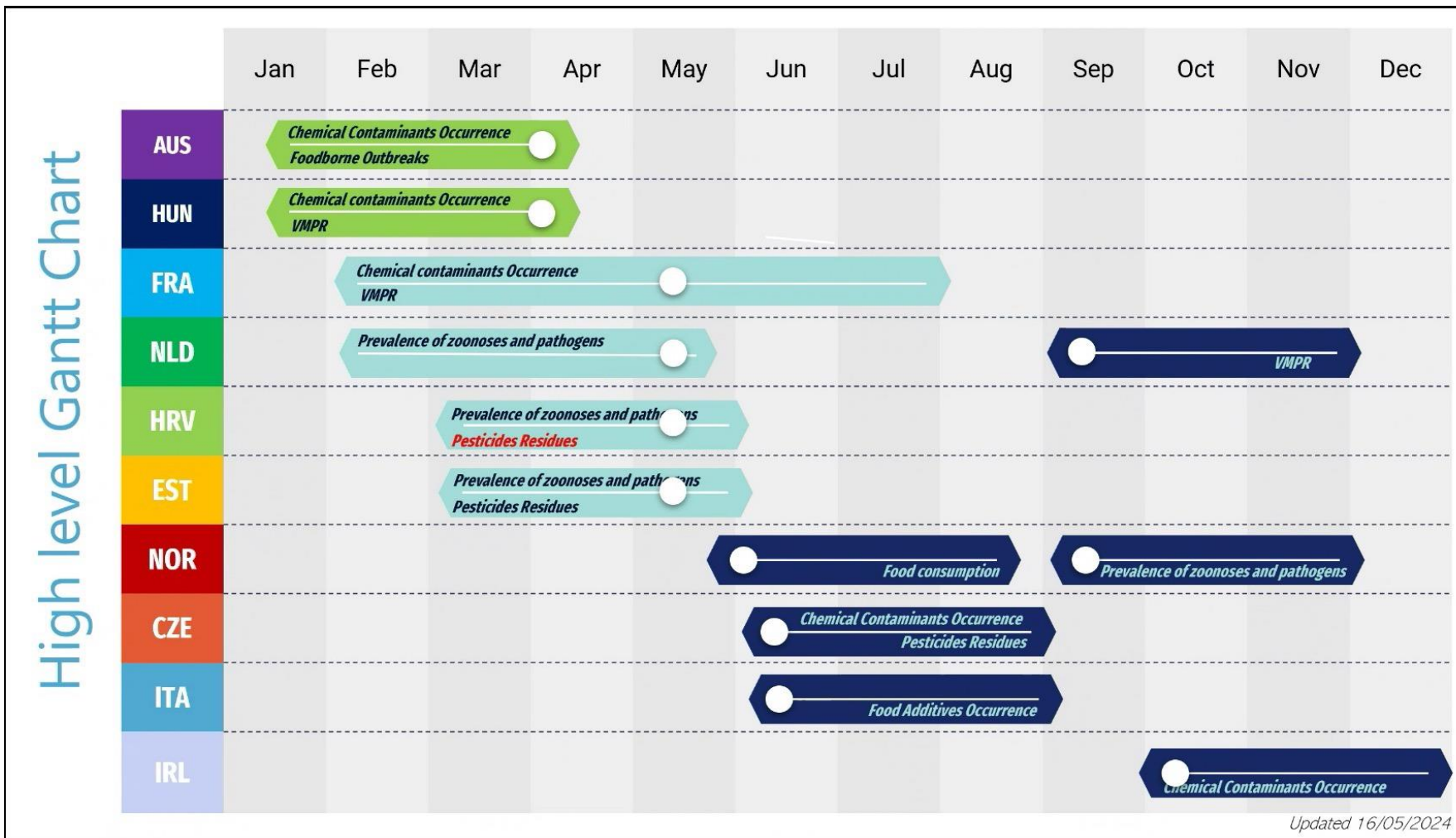
The pre-study has paved the way for the development of a robust, future-proof Data Mapping Tool



We are well-positioned to move forward with the implementation phase



PROGRESS ON FOCAL POINT TAILOR-MADE PROJECTS: DATA FLOW MAPPING IN MEMBER STATES

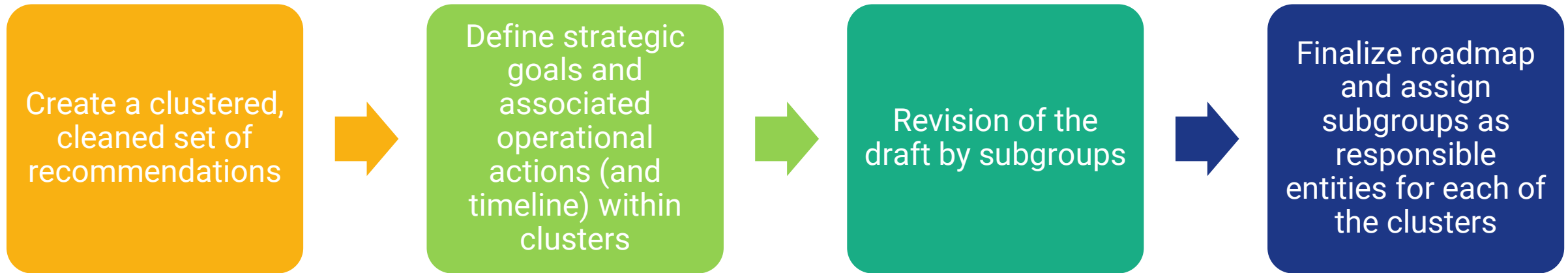


PROGRESS OF RECOMMENDATIONS

- A new AGoD mandate begins
- Time to revise AGoD multi-annual roadmap
 - Review systematic implementation of recommendations
 - Measure achievement and success
 - Improve communication and outreach
- Update recommendations to reflect impact of emerging technologies



BUILDING AGOD ROADMAP



WORKSHOP IN PARMA

Activities

1. Restructure Subgroups
2. Discuss ownership
3. Prioritize actions

Restructuring subgroups

New clusters = new subgroups?

Ownership

Who moves the actions forward?

Prioritisation

Which actions are feasible in current mandate?



CLUSTERS AND SUBGROUPS

Data Governance

- Governance bodies and roles
- Collaborative decision-making mechanisms

Data Management

- Data Quality
- Data Modelling and Terminologies
- Data Analysis and visualization

Tools & Eco-systems

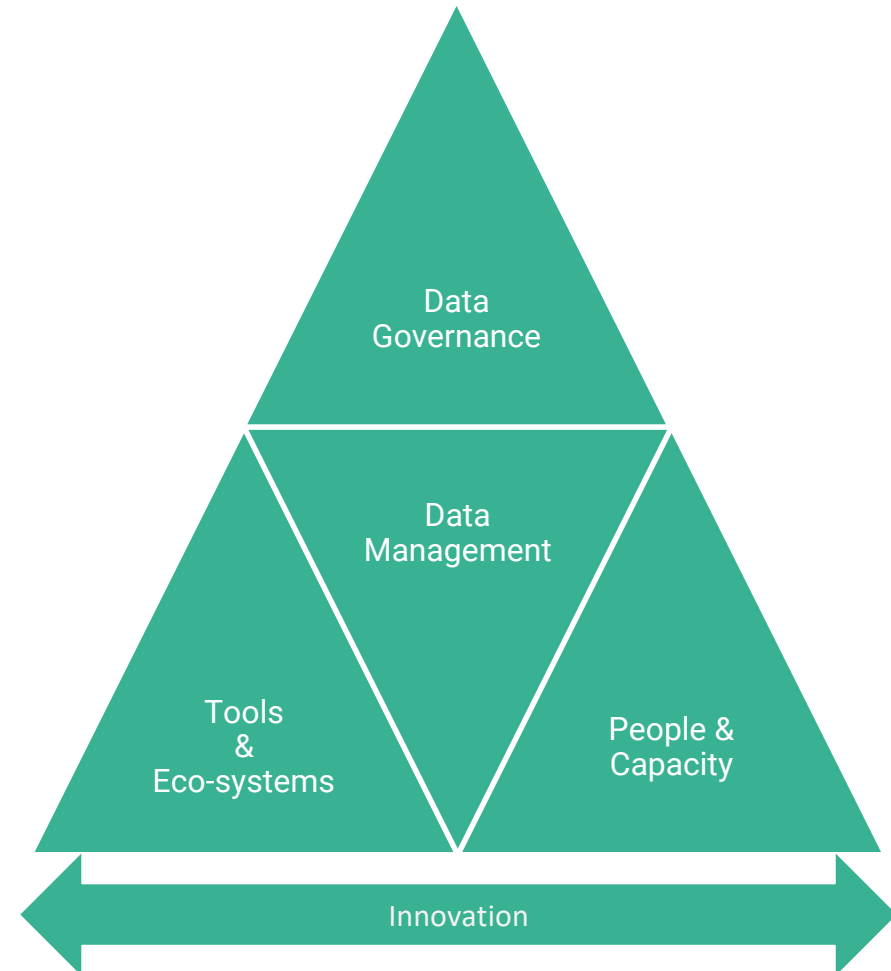
- Digital Platforms and eco-systems
- Developing and sharing tools

People & Capacity

- Data Literacy
- Data Capacity preparedness

Innovation

- Innovative data analytics
- New data streams
- **A.I. (NEW)**



COMMUNICATING AGOD ACTIVITIES

- Annual Report 2023:
<https://www.efsa.europa.eu/en/supporting/pub/en-8760>
- AGoD web page as a part of EFSA website:
<https://www.efsa.europa.eu/en/advisory-group-on-data>
- Data Conference in 2024
 - To bring together members from AGoD, its subgroups Data Collection Networks, and FP TMA participants
 - Planned topic: *Data readiness for AI*
 - Date and venue: *TBD*



WAY FORWARD

- Providing advice for the data-related FP TMT proposals: June-July 2024
- Finalizing AGoD roadmap: summer 2024
- Re-setting Subgroups: summer 2024
- Multi-annual plan: Q3 2024
- Data conference in 2024



AGOD MEETINGS IN 2024

June-July
Ad hoc meeting
on FP TMT
proposals

31 st January online	5 th March Belgium	24th April online	21st May Parma	5th Sept online	1st Oct online	3 rd Dec Hungary
Subgroup check-in	Subgroup check-in	Subgroup check-in	Subgroup check-in	Subgroup check-in	Subgroup check-in	Subgroup check-in
Progress TMT	Progress TMT	Progress TMT	Progress TMT	Progress TMT	Progress TMT	Progress TMT
Draft new <u>ToR</u>	Progress of recommendations workshop	Revision of FP Tailor Made proposals	New project ideas	Update on AI TF	Progress of recommendations	Revision of FP Tailor Made proposals
<u>AGoD</u> and AI	Update on AI Taskforce	Small conference planning of contents	Session on AI	Outcomes of data flow mapping in MS	Annual Report	Update on AI TF
Annual Report	<u>AGoD</u> website	MS presentations on national initiatives	Rebuild/Data outreach update	Update on EC data initiatives	MS presentations on national initiatives	Outcomes of data flow mapping in MS
			DEEP programme			
			Mapping Tool Sweden			

