

91ST ADVISORY FORUM
BRUSSELS, 06MAR-07MAR 2024

ESTIMATION OF PLANT PEST SURVEY PARAMETERS

Sybren Vos

Team Leader Plant Health Monitoring

PLANTS Unit –ASSESS Department

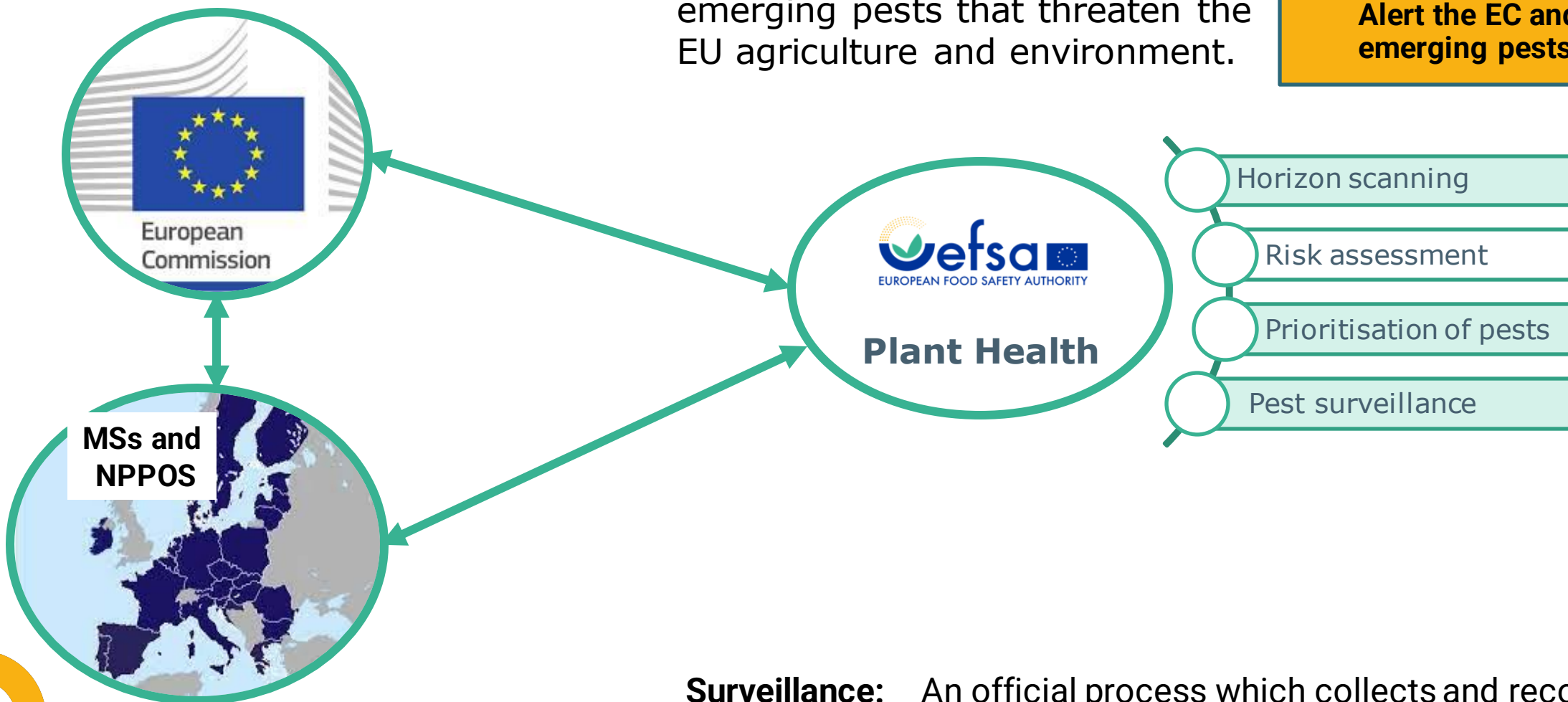


EFSA PLANT HEALTH

We provide scientific advice communication on existing and emerging pests that threaten the EU agriculture and environment.

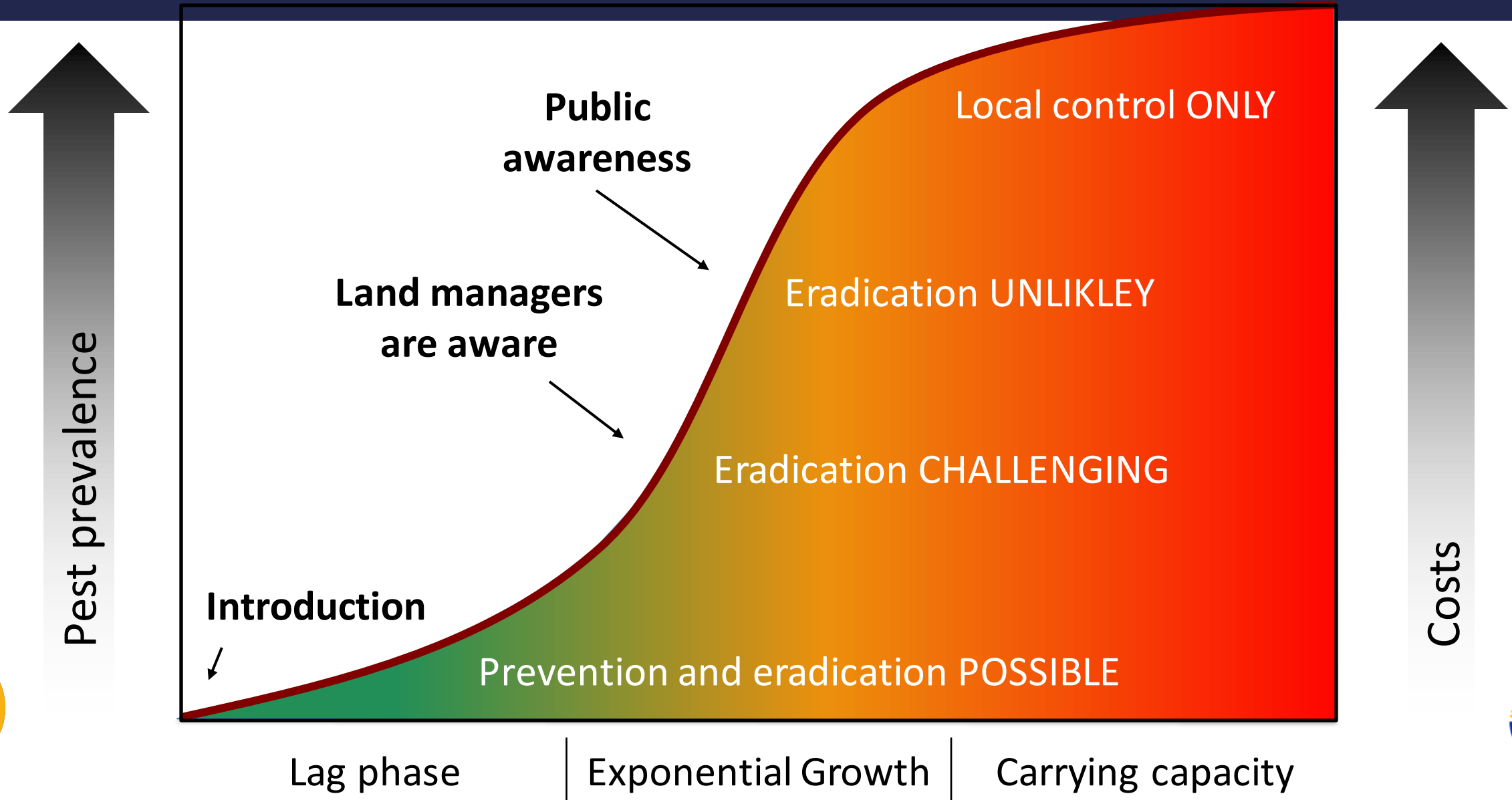
Facilitate systems for the timely detection of UQP

Alert the EC and MSs for emerging pests



Surveillance: An official process which collects and records data on pest presence or absence by survey, monitoring or other procedures (ISPM 5 – IPPC – FAO)

INVASION CURVE



MAJOR CHALLENGE



Pest prevalence

Introduction

Detection

Prevention and eradication

Land managers are aware

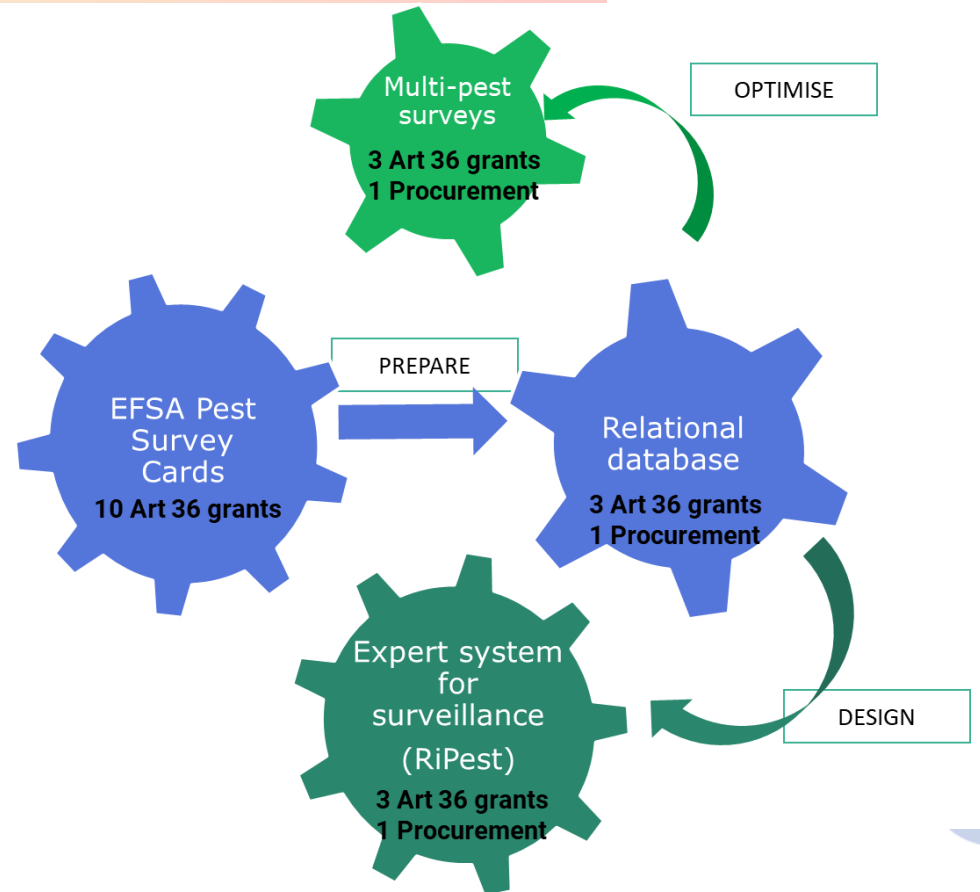
Public awareness

Eradication

Eradication

Local

Surveillance toolkit



METHODOLOGICAL FRAMEWORK & TOOLKIT

Impossible to inspect all
host plant



Statistics and
science

We need a
sample



METHODOLOGICAL FRAMEWORK & SURVEY PARAMETERS

Impossible to inspect all host plant

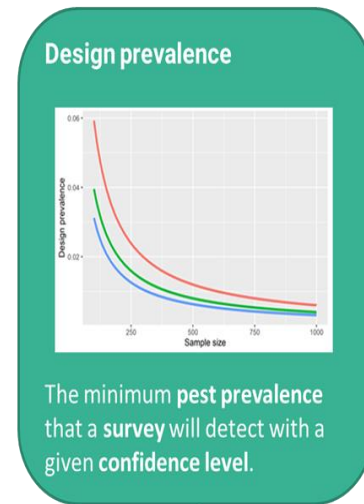


Statistics and science

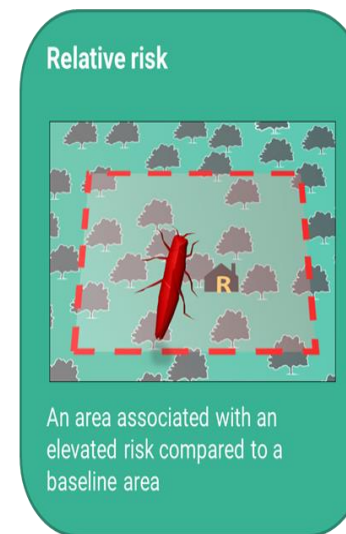
We need a sample



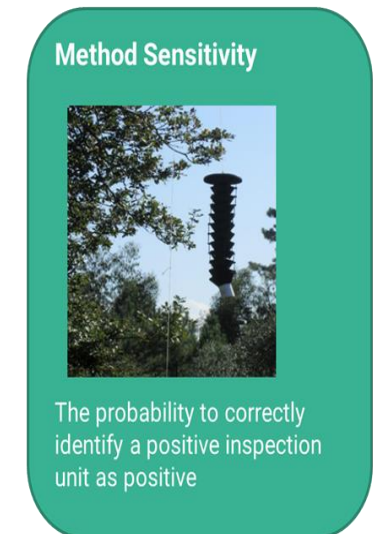
WHAT ? Characterise the PEST



WHERE ? Characterise the host plants



HOW? WHEN? Detection methods



Estimates and data gaps

How much ? Sample



EFSA PLANT HEALTH



Pest survey toolkit

Partnerships = Be fit for purpose

Networking / Sharing / Training / Partner

MSs and NPPOS

2 PLH Networks

- Risk assessment in PLH
- **Plant pest surveillance**



EFSA NETWORKS / Art36 Grants /SNEs

Efforts for increasing partnership:

- MS contact points
- Capacity building
- Diversity and number of grant holders
- Promotion of grants
- Simplification of grant procedures

e.g. Ongoing Grants

NVWA NL

CNR IT

UPAD IT

CREA IT

IVIA ES

CSIC ES

ILVO BE

HAPIH HR

Thessaly Univ GR

e.g. ongoing procurements

Openanalytics

4 ISA experts

ESTIMATION OF SURVEY PARAMETERS FOR 20 PRIORITY PESTS

PP: 20 UQP ranked highest for the threat they pose to EU agriculture and environment

Collect the evidence available

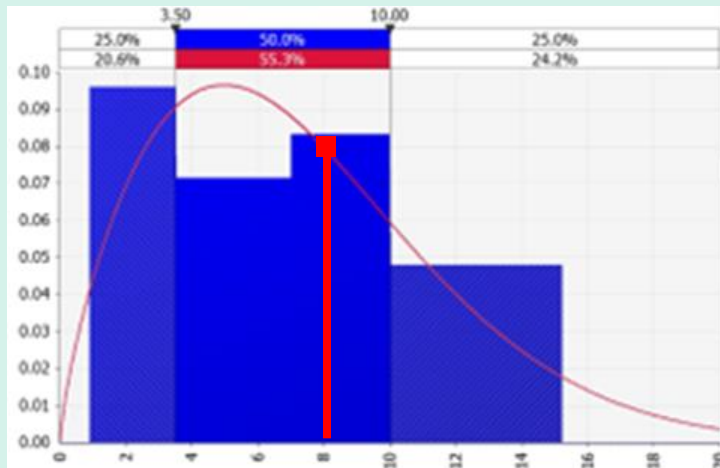
GP/EFSA/PLANTS/2022/09 - Lot 2.

Collection of evidence in preparation of expert knowledge elicitation on method sensitivity and design prevalence

Thessaly University

EKE: EU median for the survey parameters.

- defined scenario
- uncertainties
- Guide



ESTIMATION OF SURVEY PARAMETERS FOR 20 PRIORITY PESTS

PP: 20 UQP ranked highest for the threat they pose to EU agriculture and environment

Collect the evidence available

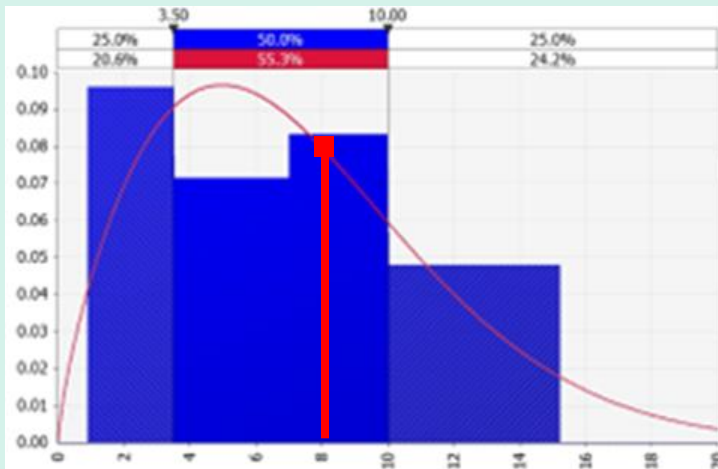
GP/EFSA/PLANTS/2022/09 - Lot 2.

Collection of evidence in preparation of expert knowledge elicitation on method sensitivity and design prevalence

Thessaly University

EKE: EU median for the survey parameters.

- defined scenario
- uncertainties
- Guide



Design standardized experimental and statistical protocols

Art 36 Grant April-May
250,000€ and 24 Months

Setting the parameters at local/national level

- Data collection and analyses:
- Pilots for implementing the protocols

Opportunity for
New partnership

GRANTS IN PEST SURVEILLANCE

Other Opportunities

for new partnerships
in 2025

Pest survey cards for UQP pests

- Pests of cereals and fibre crops
- Begomoviruses and Bemisia tabacci
- Non-EU Scolytinae (?)
- Other pests

Effectiveness of insect trapping methods

- Develop a method (Color-Bait-Design)
- Pheromones and kairomones
- Coverage and attractiveness of traps
- Recommended traps for EU Priority pests



CONCLUSIONS

Main challenges in pest surveillance

Early detection of pests
→ eradication and control is costly

Harmonised Pest status
→ Robust surveys comparable in time and space

Training
→ Use of New tools and workload of MS

Opportunities for Cooperation

**SNEs and Art 36
organisation**

get trained - **capacity building**

fit for purpose support

Annual workshops



STAY CONNECTED

SUBSCRIBE TO

efsa.europa.eu/en/news/newsletters
efsa.europa.eu/en/rss
[Careers.efsa.europa.eu](https://careers.efsa.europa.eu) – job alerts



LISTEN TO OUR PODCAST

Science on the Menu – Spotify, Apple Podcast and YouTube



FOLLOW US ON TWITTER

[@efsa_eu](https://twitter.com/efsa_eu) [@methods_efsa](https://twitter.com/methods_efsa)
[@plants_efsa](https://twitter.com/plants_efsa) [@animals_efsa](https://twitter.com/animals_efsa)



FOLLOW US ON LINKEDIN

[Linkedin.com/company/efsa](https://linkedin.com/company/efsa)



FOLLOW US ON INSTAGRAM

[@one_healthenv_eu](https://instagram.com/one_healthenv_eu)



CONTACT US

efsa.europa.eu/en/contact/askefsa

