

Animal Welfare – first priority for the farmer

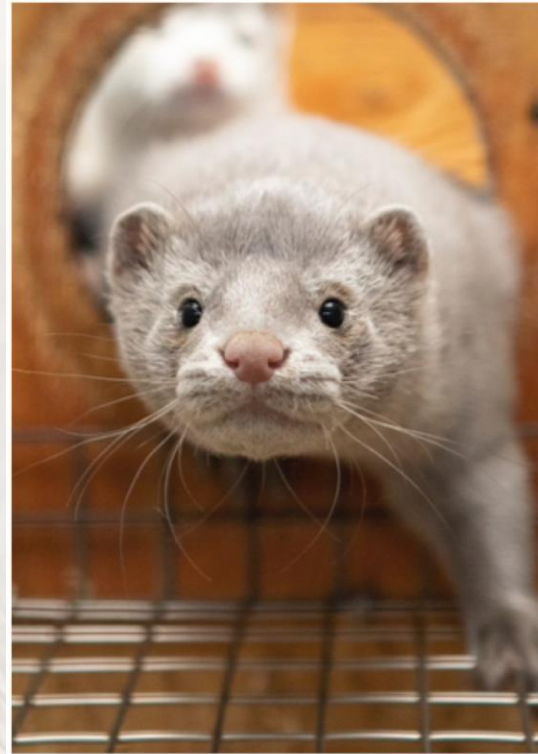
22.12.2024

Markus Sjöholm

Chairman Fur Europe

3rd generation mink and fox farmer in Finland

3rd generation mink and fox farmer



Myths – perception versus reality

- The fur sector supports animal welfare rules based on science and solid scientific studies
- Welfur is an example of the sector's willingness to constantly progress and seek advice from science
- No other agricultural sector is met with as many myths as the fur industry
- Most people think they know – but never visited a fur farm!

Myth buster 1: Injuries at farm level

American Mink

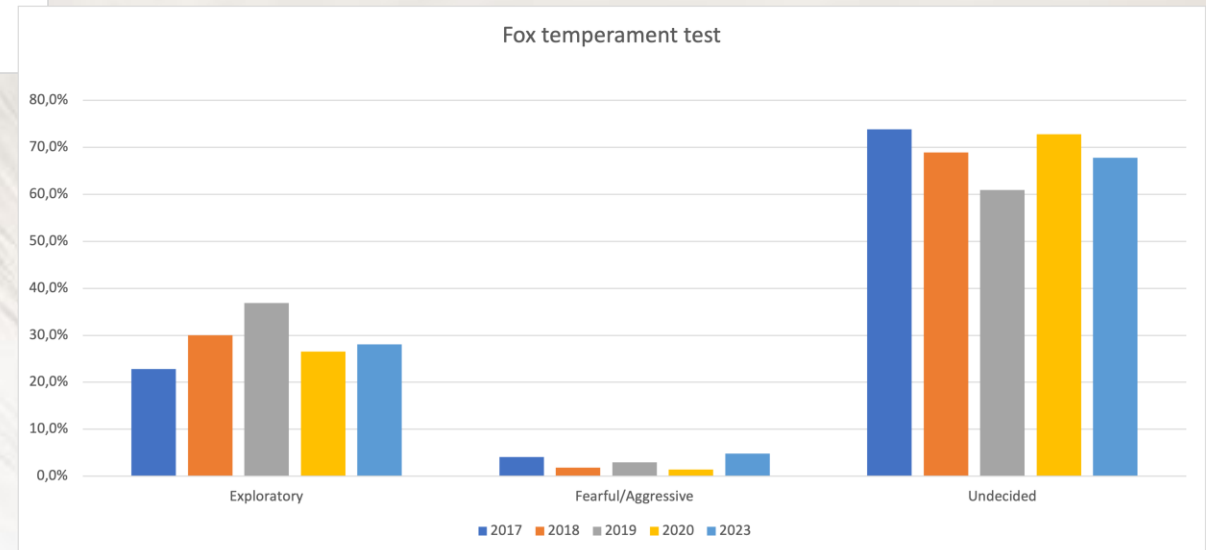
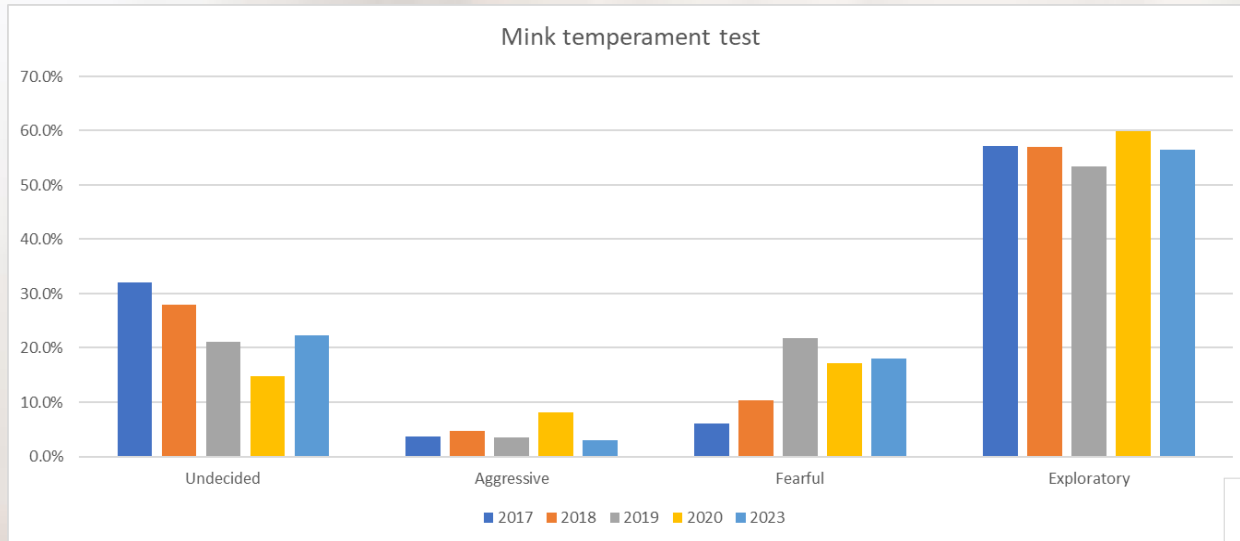
| | 2017-2019 AVG | 2020 | 2023 |
|-------------------------|---------------|------|--------|
| Injuries (adult) < 10mm | 0.7% | 1.0% | 1.2% |
| Injuries (adult) < 30mm | 0.3% | 0.3% | 0.4% |
| Injuries (adult) > 30mm | 0.1% | 0.1% | • 0.1% |

Fox

| | 2017-2019 AVG | 2020 | 2023 |
|---------------------|---------------|-------|-------|
| Mild Fresh lesions | 0.65% | 0.61% | 1.48% |
| Bleeding/Infections | 0.04% | 0.00% | 0.07% |



Myth buster 2: Temperament test is important for the farmer



Farm visits are essential to understand

We would like to invite everyone from the EFSA working group to a farm visit in Europe – ideally, there would be several visits in different countries to see different species.

