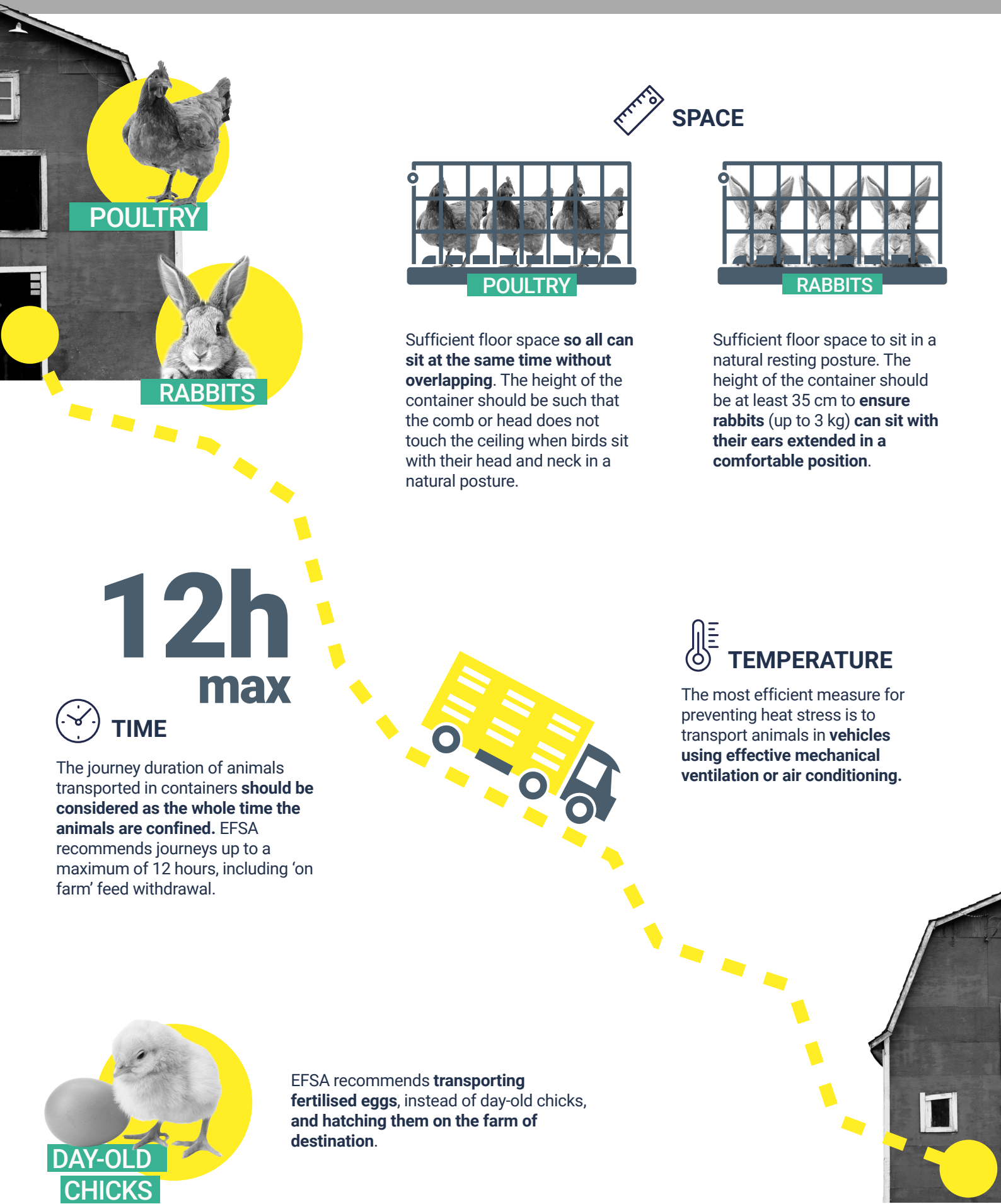


Animal welfare during transport

ANIMALS IN CONTAINERS

More space, lower temperatures, journeys up to max 12 hours: these are some of the key recommendations to improve the welfare of animals transported in containers, included in a new scientific opinion by EFSA.



Good animal welfare practices not only promote intrinsic animal wellbeing but also help to make animals healthier. This is a key element for the safety of the food chain considering the close links between animal welfare, animal health and food-borne diseases, in line with the One Health principle.