

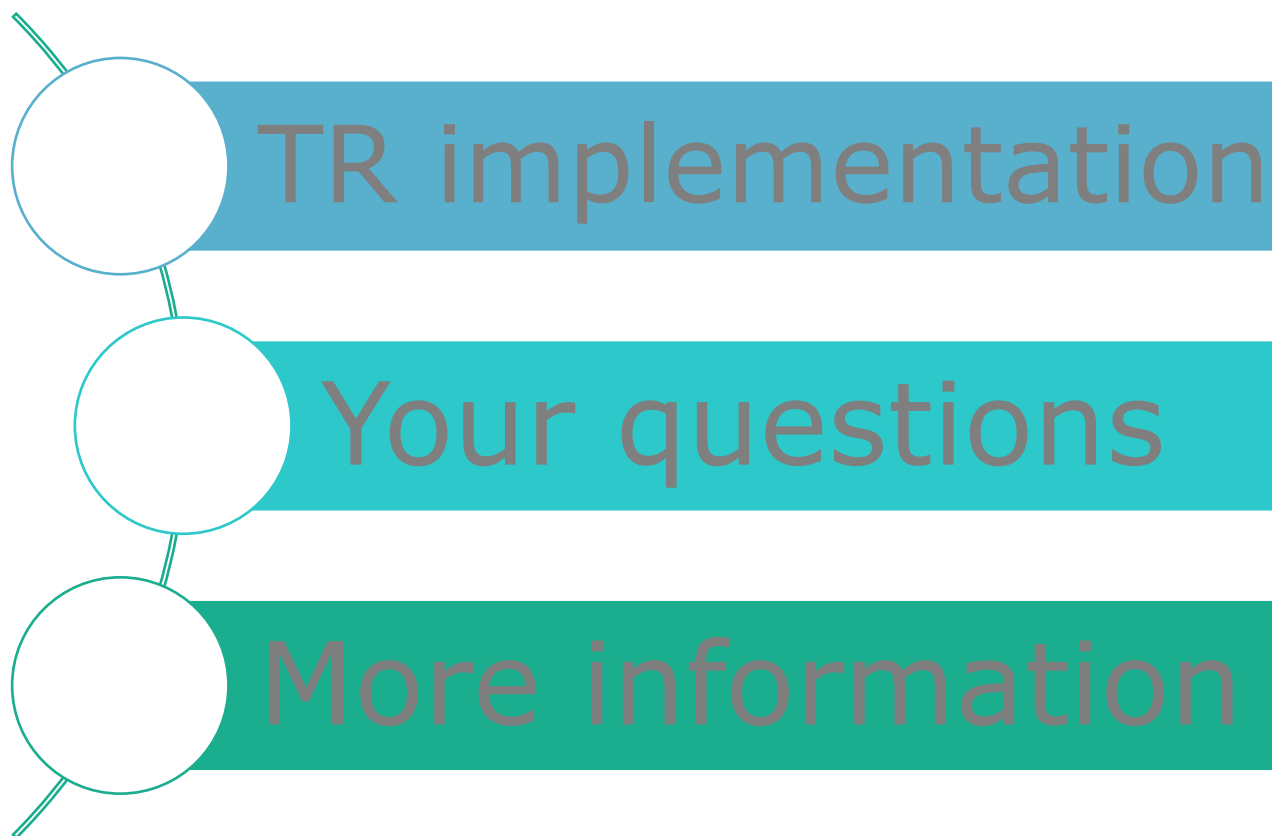
23 April 2021

Ad-hoc meeting GMO Representatives

Transparency Regulation Implementation

Karine Lheureux

HoU APDESK

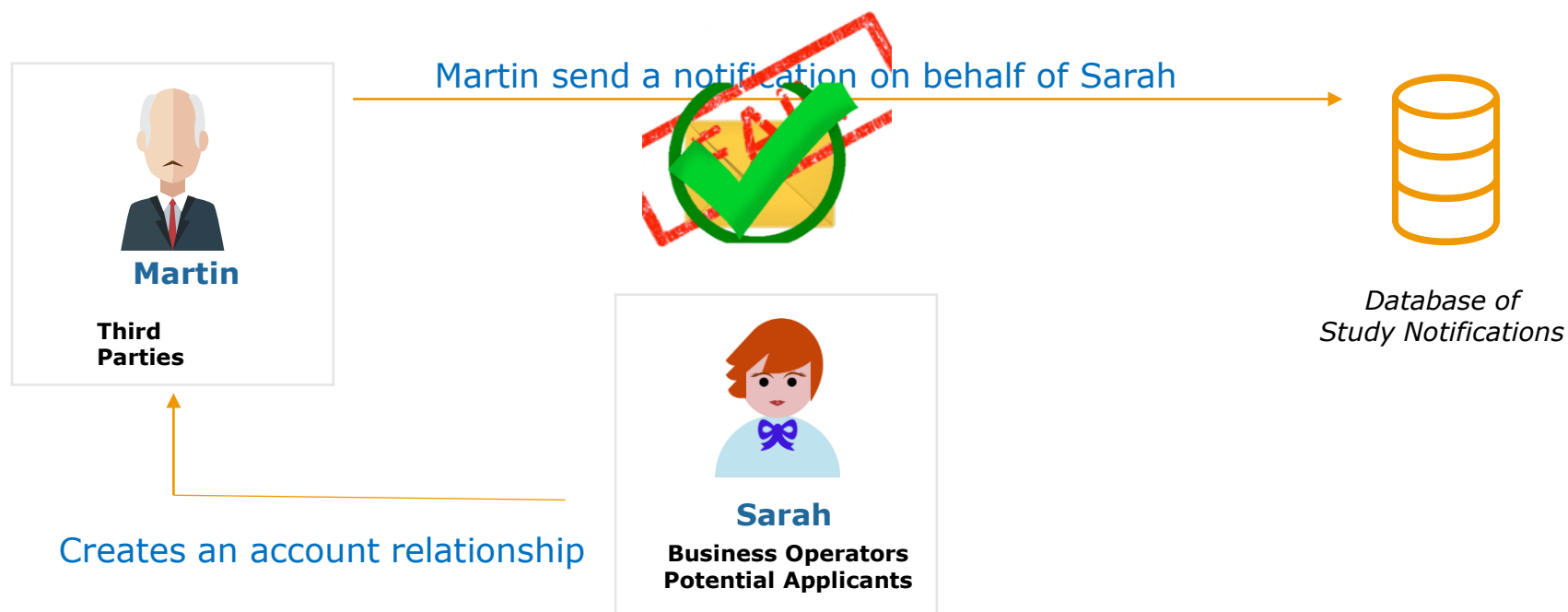


Statistics from Account Registration (21/06)

- Applicants: 635
 - Laboratories: 404
 - Consultants: 278
 - Member States: 98
-
- Delayed account activation (by EFSA): counts as valid justification if any delay in NoS
 - Number of members per organisation: increased to 6 / organisation as of end of June 2021
 - Implementation of Two-way authentication

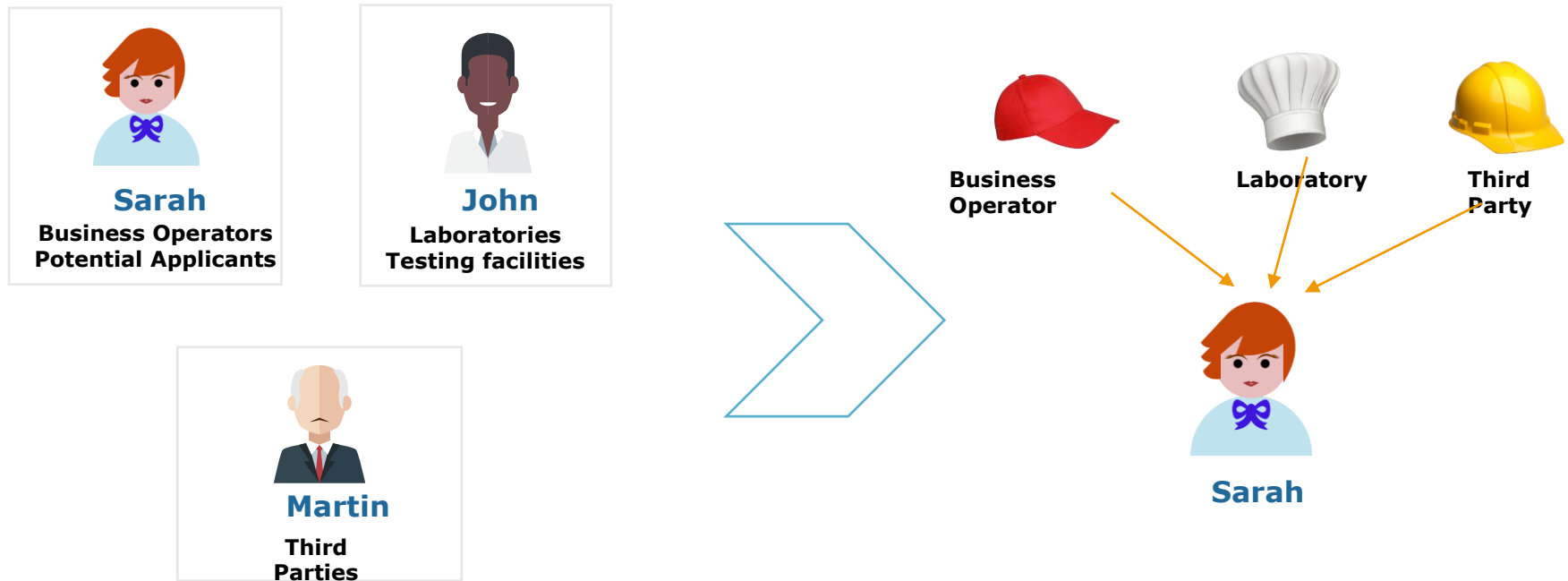
Authorisation of delegation to third parties

Update from Account Registration



This feature is in place since 30/04. New video under preparation.

Update from Account Registration

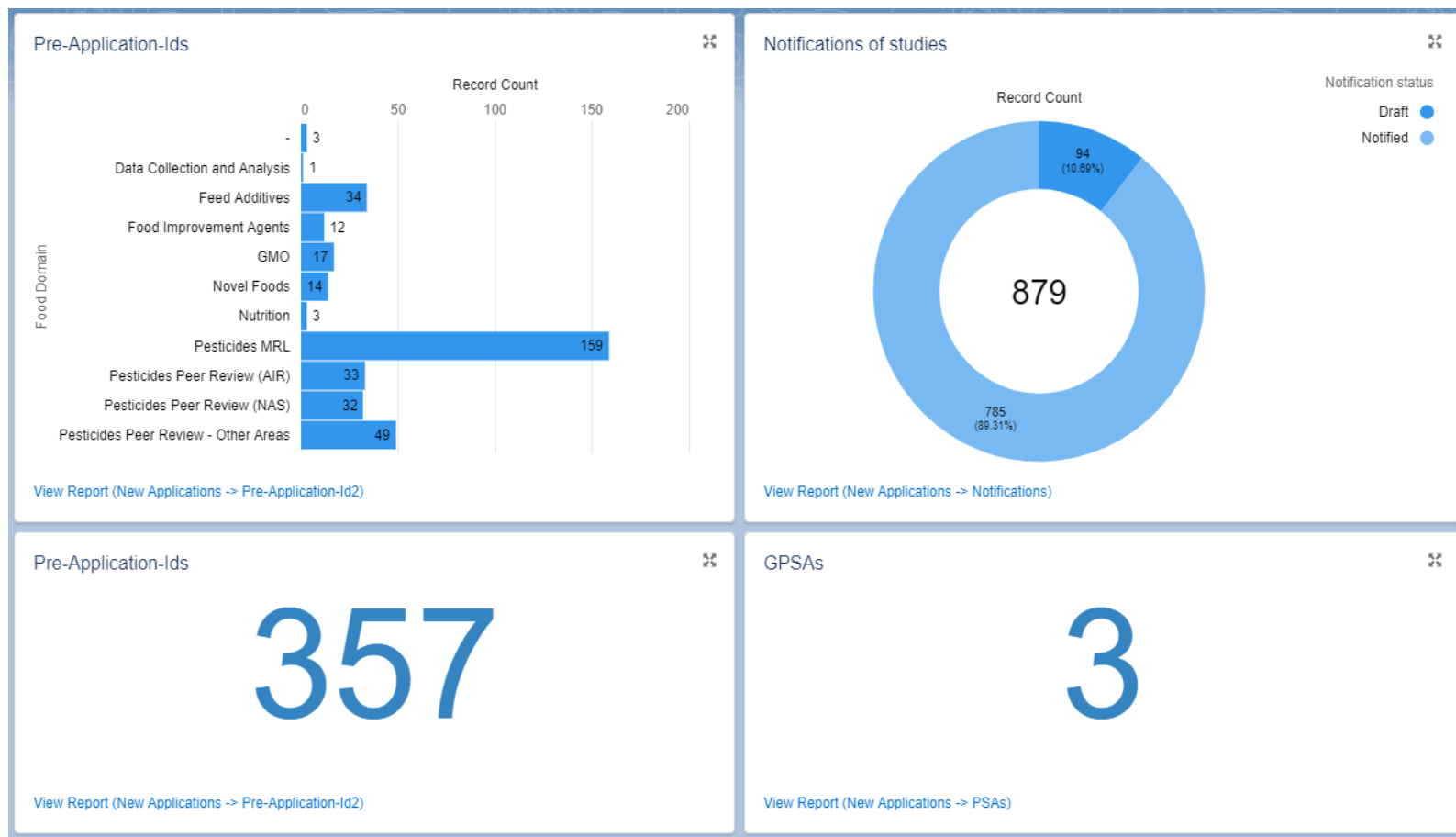


The implementation of this feature will require some adjustments to the user interface.

This feature will be in place from 30th June. New video under preparation.

Webinars: Webinar 16 February ([here](#)). Webinar 26 March ([here](#)).

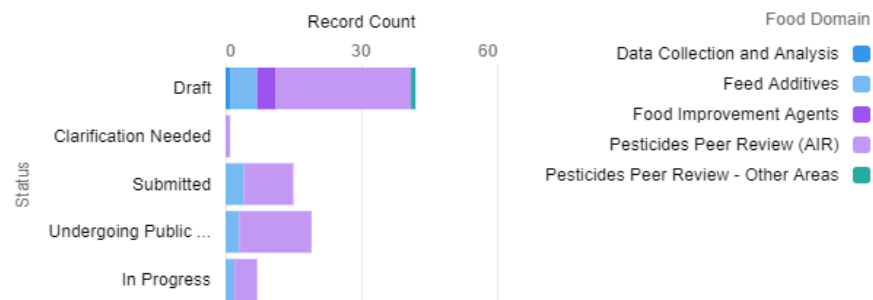
Statistics from Connect.EFSA New applications (21/06)



Statistics from Connect.EFSA Renewals (21/06)

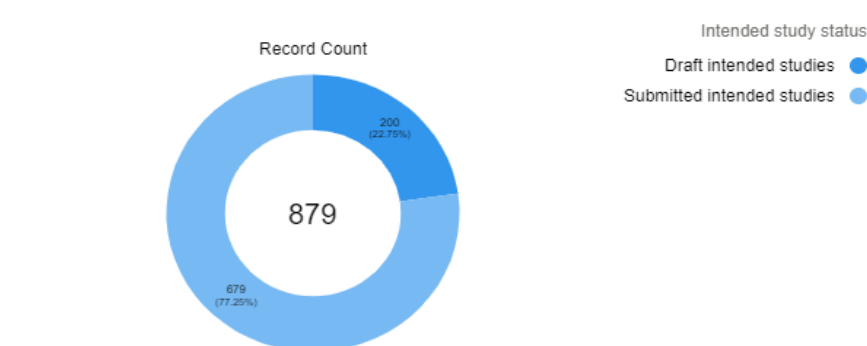
Pre-Application-Ids

i.e. List of Intended Studies



[View Report \(Renewals -> List of Intended Studies2\)](#)

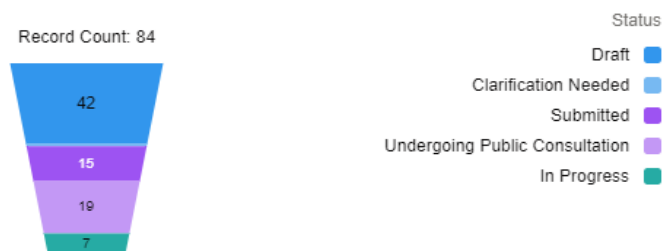
Inteded studies|Notified studies



[View Report \(Renewals -> Inteded studies\)](#)

Pre-Application-Ids

i.e. List of Intended Studies



[View Report \(Renewals -> Lists by status\)](#)

GPSAs asked for application for renewals

3

[View Report \(Renewals -> PSAs\)](#)

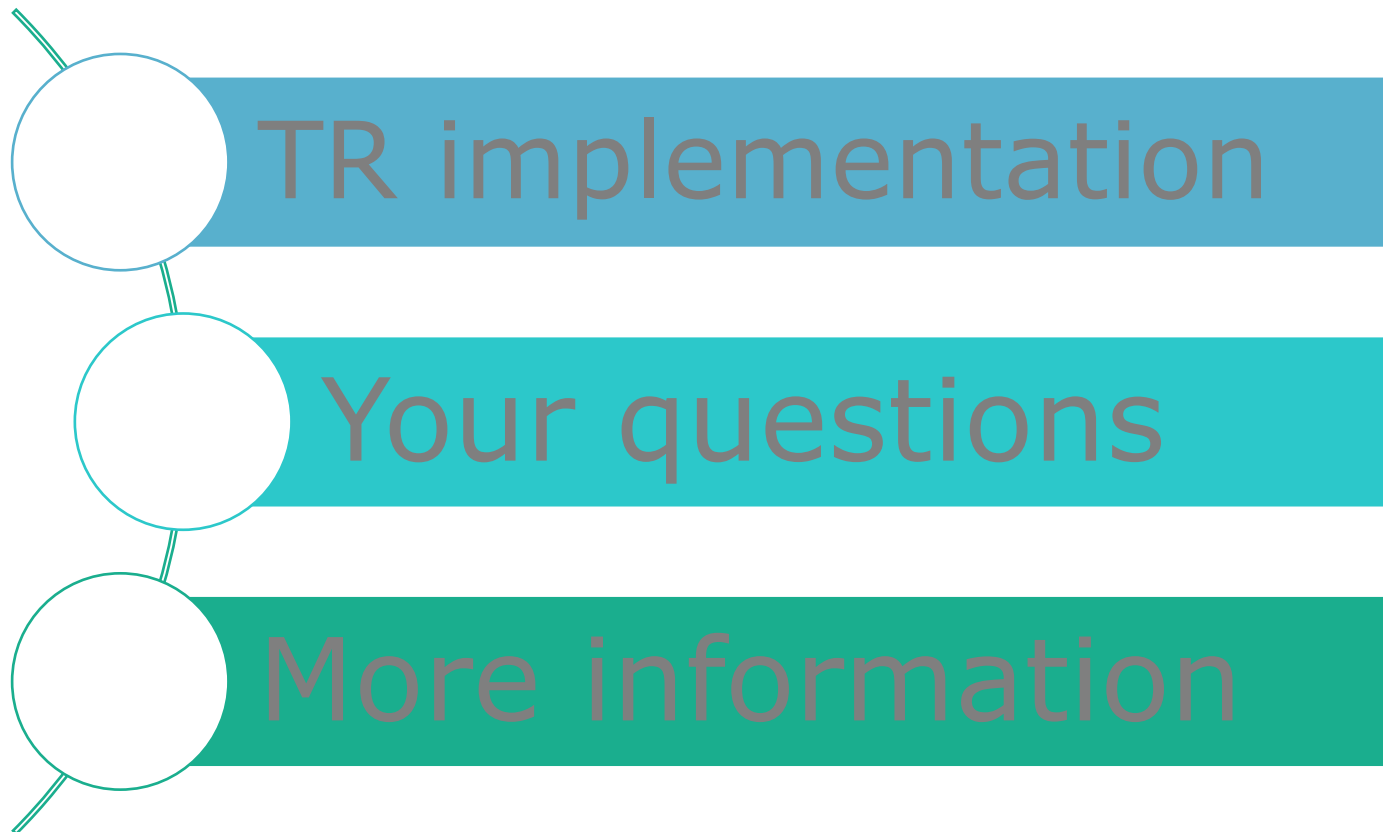
Statistics from E-submission ESFC (15/06)

In EFSA - under Validity check	N*
Food Contact Materials – recycling processes	11
Novel Foods	1
Infant/Follow-on formula	1
Total	13
Submitted to EC or MS	N*
Food Additives	1
Food Enzymes	1
Feed Additives	3
Health Claims	2
Novel Foods	11
Traditional Foods	3
Infant formulae-Follow on formulae	1
Food Contact Materials – recycling processes	4
Total	26

* Captured on 15 June 2021

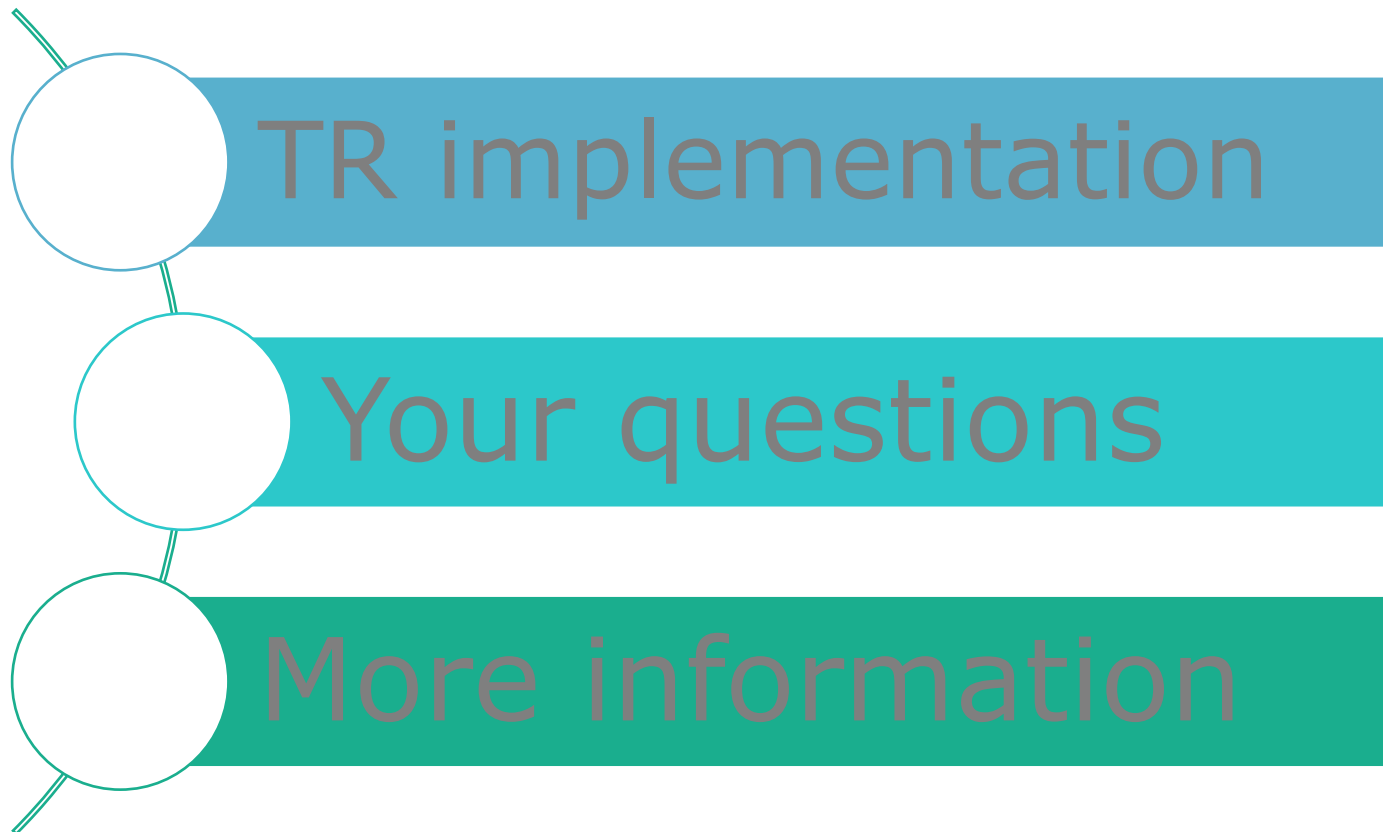
 [Video Tutorials](#)

 [User Guide](#)



Your questions







Topics	Clarifications on	References
Notification of Studies	Type of justifications Steps workflow	PAs, Art.21, Art.22 EFSA Q&A, N42 EFSA ADM Guidance GMO
ESubmission Food Chain platform	ToC submission Connection with EFSA.connect portal	EFSA GMO ADM GD, chapter 2.14 ESFC User Guide EFSA Video Tutorials



Legal documents:

-  Transparency Regulation: [Regulation \(EU\) 2019/1381](#)
-  General Food Law: [consolidated text of Regulation \(EC\) No 178/2002](#)
-  [Practical arrangements on pre-submission phase and public consultations](#)
-  [Practical Arrangements concerning transparency and confidentiality](#)
-  [EFSA Practical Arrangement on Access to Document \(March 2020\)](#)

Guidance/training materials:

-  Q&As on PAs: [Questions and Answers on the EFSA Practical Arrangements](#)
-  EFSA digital toolkit page
<https://www.efsa.europa.eu/en/applications/toolkit>
-  Updated administrative guidance for regulated products: [Administrative guidance for the processing of applications for regulated products \(update 2021\)](#)
-  Catalogue of services:
[EFSA's Catalogue of support initiatives during the life-cycle of applications for regulated products \(update 2021\)](#)
-  Training material, including video introductions/tutorials and webinar recordings, are available under the dedicated section ["Transparency Regulation Implementation Training Programme"](#) on the EFSA website
-  Dedicated support to small and medium-sized enterprises
<https://www.efsa.europa.eu/en/applications/about/services>



Subscribe to

efsa.europa.eu/en/news/newsletters
efsa.europa.eu/en/rss



Receive job alerts

careers.efsa.europa.eu – job alerts



Follow us on Twitter

[@efsa_eu](https://twitter.com/efsa_eu)
[@plants_efsa](https://twitter.com/plants_efsa)
[@methods_efsa](https://twitter.com/methods_efsa)
[@animals_efsa](https://twitter.com/animals_efsa)



Follow us Linked in

[Linkedin.com/company/efsa](https://linkedin.com/company/efsa)



Contact us

efsa.europa.eu/en/contact/askefsa