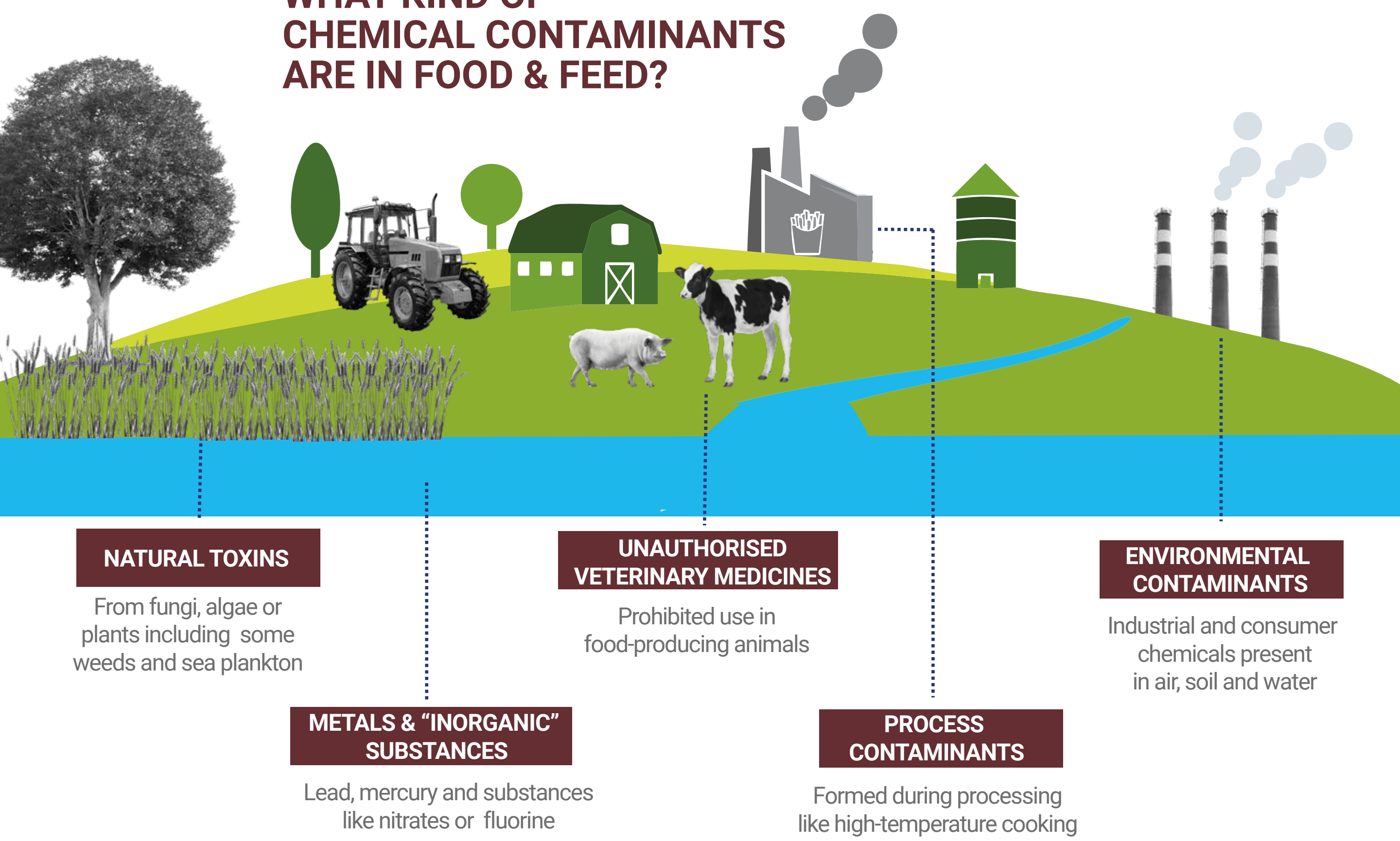


Chemical contaminants in the food chain



Contaminant levels in food and feed are usually too low to harm consumers and animals but they can **cause effects** such as **food poisoning** and their **presence** or **accumulation over time** might affect animal and human health.

WHAT KIND OF CHEMICAL CONTAMINANTS ARE IN FOOD & FEED?



HOW ARE CONSUMERS & ANIMALS PROTECTED?



DATA COLLECTION

Member States tell us if foods are contaminated and by how much



RISK ASSESSMENT

Scientists estimate if humans and animals are exposed to contaminants and the potential risks



RISK MANAGEMENT

Data and advice provide a scientific basis for decision-making by risk managers

Find out more: www.efsa.europa.eu/en/topics/topic/contaminantsfoodfeed

EFSA is the keystone of EU risk assessment regarding food and feed safety. In close collaboration with national authorities in open consultation with its stakeholders, EFSA provides independent scientific advice and clear communication on existing and emerging risks.

© European Food Safety Authority, 2025. Reproduction is authorised, except for commercial purposes, provided that the source is acknowledged.

Photo credits: Shutterstock

ISBN 978-92-9499-724-1 | doi:10.2805/5829696 | TM-04-17-039-EN-C