

REG (EC) 1/2005

**DOES IMPLEMENTATION
OF TRANSPORT LAW CAUSE
ROUTE DEVIATIONS ?**

COMMON ROUTES



ALTERNATIVE ROUTE

approved by the Vet ?

plausibility check ?

transit countries
entry journey log ?

deviation by drivers ?

reason ?

return of the journey log ?

1285 km
20 $\frac{2}{3}$ h

70/60/60/60/50/30 km/h
MicrosoftAutoRouteExpress

1340 km
23 h

70/60/60/60/50/30 km/h
MicrosoftAutoRouteExpress

+ 55 km
+ 2 $\frac{1}{3}$ h

Art. 3 a)

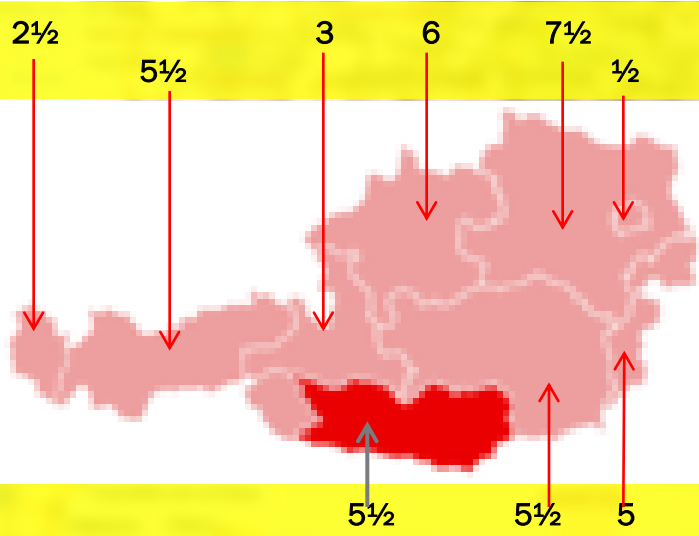
all necessary arrangements have been made in advance
to minimise the length of the journey

REASONS FOR DEVIATION

WAY BACK

National Control Plan

LAT Inspection during transport
hours per week



Statistics Austria 2008

1226 controls during journey
211 infringements
(incl. 88 with pain/suffering/injuries)

100 x warnings
12 x fines
127 x criminal proceedings

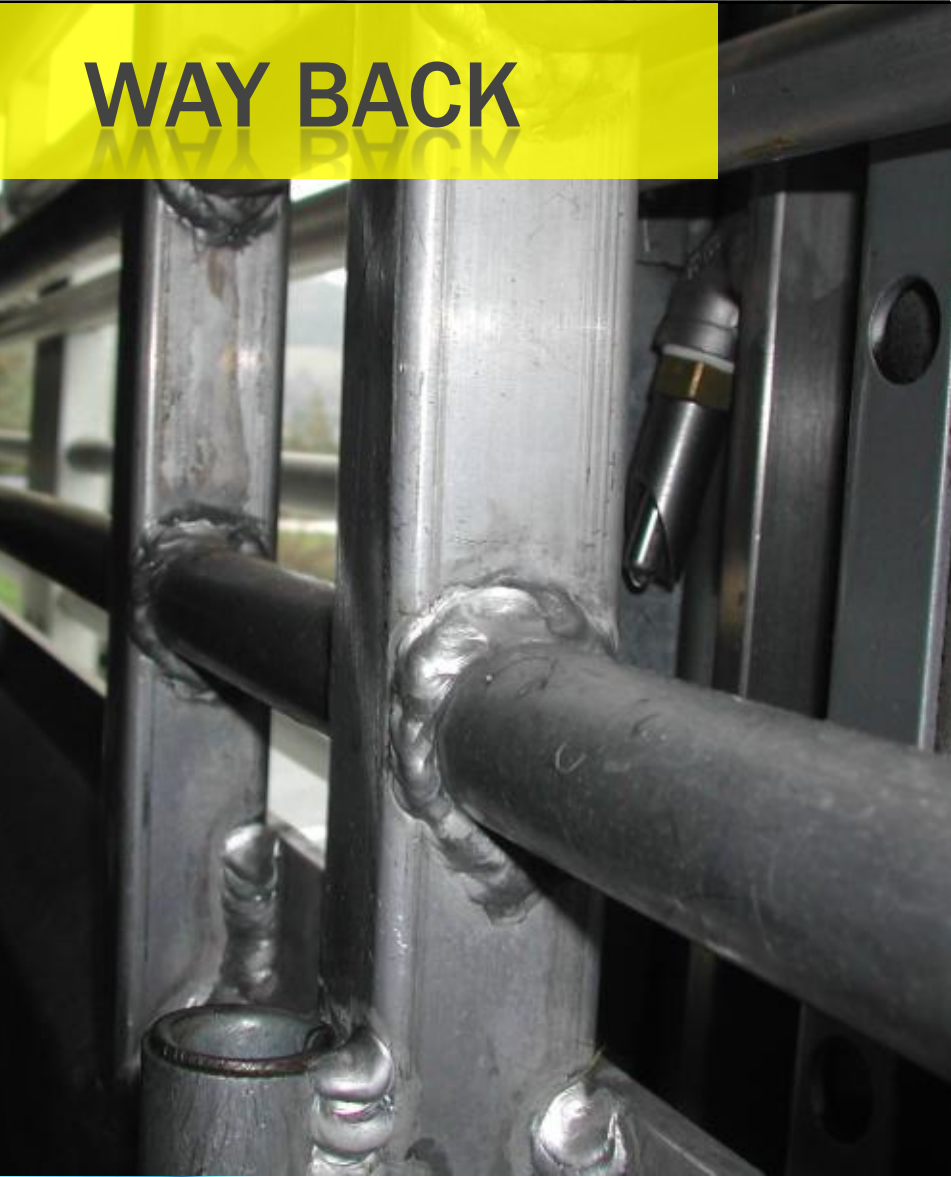
34 x emergency unloading

+ 2 ⅓ h

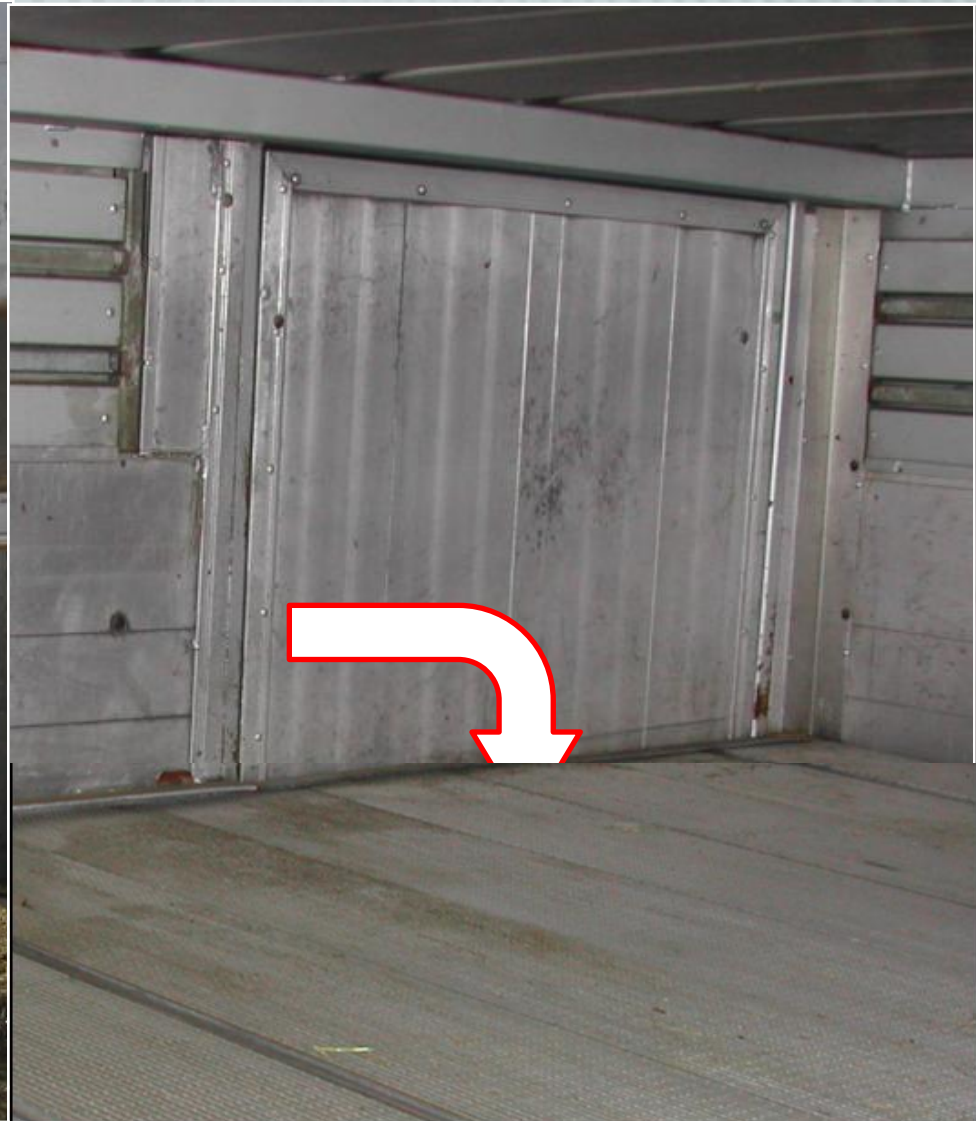


REASONS FOR DEVIATION

WAY BACK



REASONS FOR DEVIATION



WHAT MUST BE DONE ?



THESE LORRIES ARE STILL APPROVED !

WHAT MUST BE DONE ?



1

Stop different interpretation of European matters on national / regional / local levels
Re-evaluation of existing approvals

**1 European registration office
for approvals of technical equipment (gadgets, facilities)
in animal transport vehicles**

JRC



THESE LORRIES ARE STILL APPROVED !

WHAT MUST BE DONE ?

2

Standardized + uniform further education of Official Vets

Relaunch of **TAIEX** ?



WHAT MUST BE DONE ?



3


Repeated + ongoing infringements of Reg (EC) 1/2005 detrimental to Animal Welfare



Improve sanctioning systems on an European level



Infringement proceedings against MSs !



DG(SANCO) 2010-8387. *Regarding transport of unweaned calves, a major deficiency persists in the inadequate checks at departure, in particular on the watering and feeding intervals, journey times and resting periods.*



THESE LORRIES ARE STILL APPROVED !

WHAT MUST BE DONE ?

4

Huge questionnaire within MSs



FAQ - webpage DG SANCO



THESE LORRIES ARE STILL APPROVED !

WHAT MUST BE



Introducing in LAT:

3R principle

Refinement

SCAHAW-reports

EFSA (microclimate LAT road vehicles 2004)

EFSA (The welfare of animals during transport 2004)

EFSA (AW Risk Assessment Guidelines LAT 2008)

Reduction

decentralized abattoirs

balanced self-sufficiency

Replacement

products instead of animals

REPLACEMENT = FOOD SAFETY

THESE LORRIES ARE STILL APPROVED !