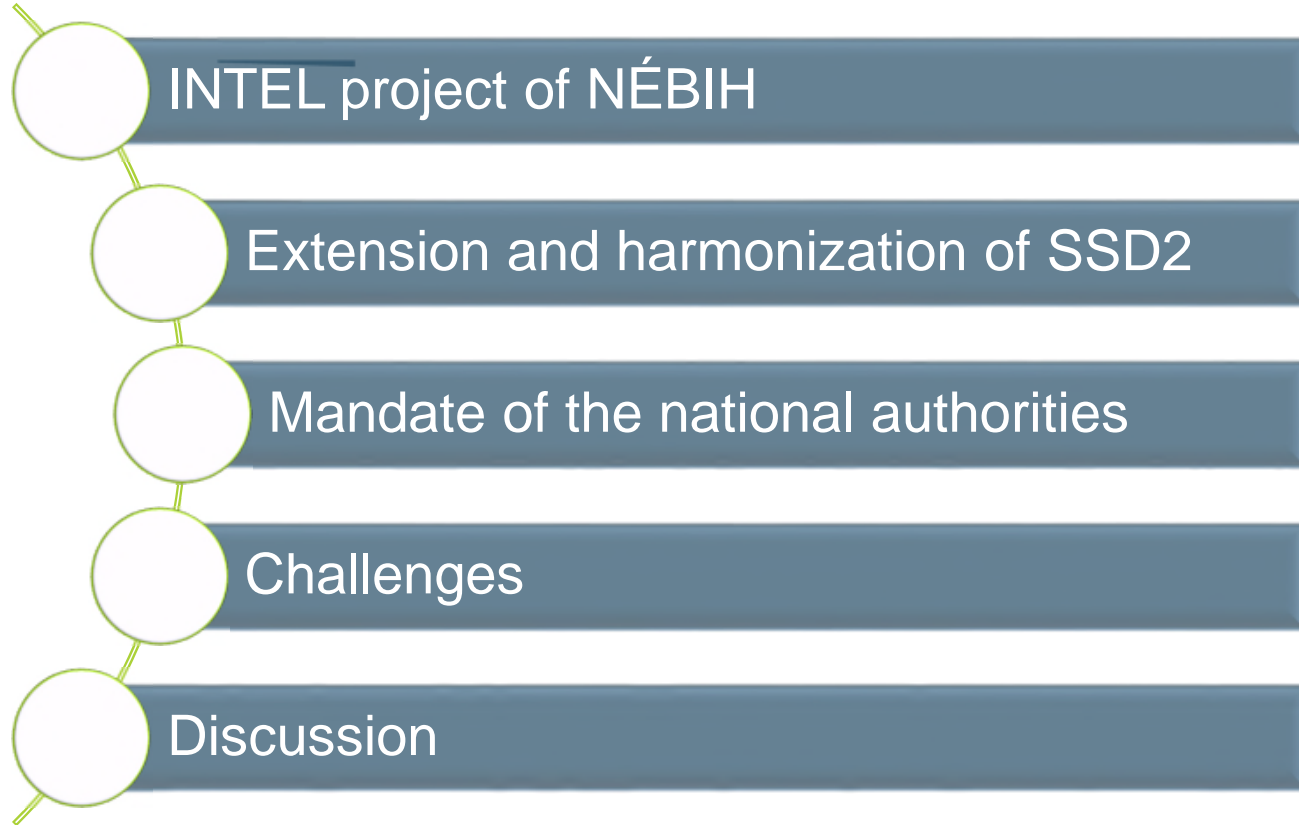


# Extension and harmonization of the SSD2 system among Member States

Ákos Józwiak DVM, PhD  
vice-director  
National Food Chain Safety Office

# Outline



# INTEL project of NÉBIH

Most comprehensive IT development project of our office so far, covering:

- Electronic official control
- Laboratory Information Management System
- Data Warehouse

Our data model and structure has to serve all areas related to the food chain safety supervision and facilitate national and international data reporting

# Extension and harmonization of SSD2

To facilitate national and international reporting

- The data model is developed based on SSD2 principles
- The system will be able to produce raw reports for data transmission
- The national catalogues are being harmonized with SSD2 catalogues
  - Most challenging: matrix (FoodEx2) and parameter catalogues
    - We need to build national hierarchies and facets
    - Why?

# Mandate of the national authorities

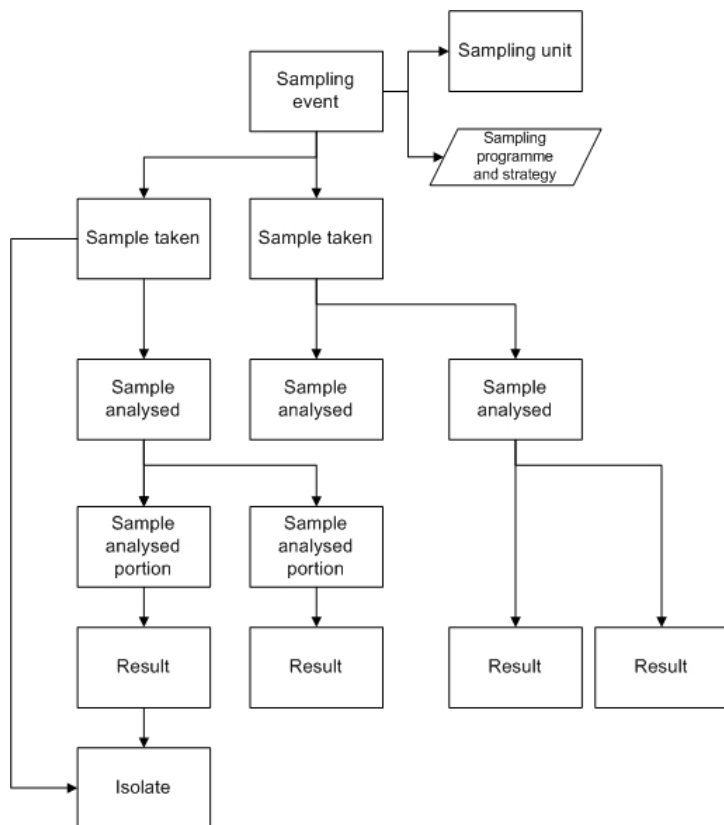
- Risk assessment – risk communication: similarly to EFSA
- Also risk management:
  - More fields:
    - Food hygiene, food safety and food quality
    - Feed safety, feed hygiene and feed quality
    - Plant production, plant protection, plant health control
    - Animal health, animal welfare, animal breeding
    - Veterinary medicinal products and pesticides
    - Game management and fishing
    - Forest resources and forest management
    - Agricultural environmental protection, soil protection
    - Water management for agriculture, etc.
  - Different classification systems to comply with:
    - e.g. MLs in CN coding system

# Challenges

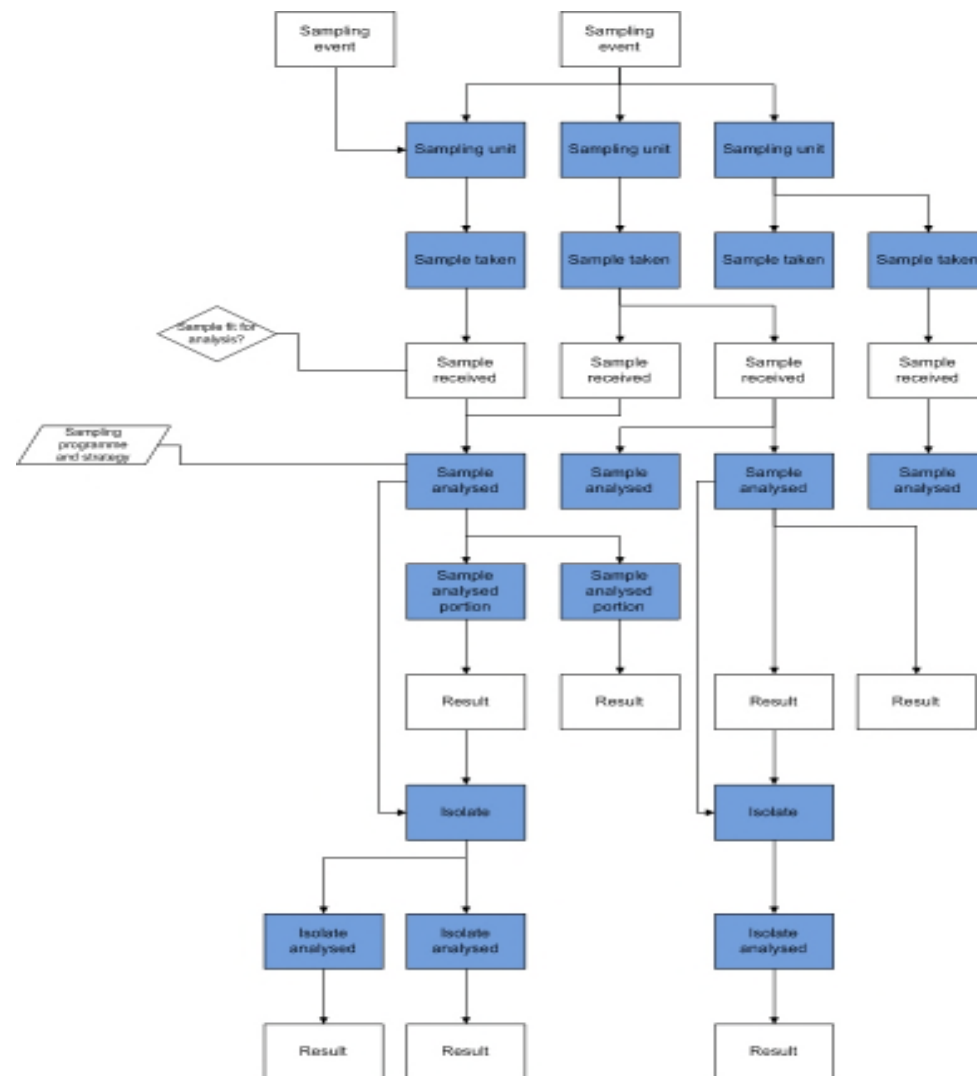
- SSD2 data model needs to be adjusted to practical needs
  - e.g. one sample serves more purposes – this has an impact on the data structure
- Matrix and Parameter catalogues need to cover other fields as well
  - M: animal breeds, animal by-products, environmental samples, soil types...
  - P: animal diseases, plant pathogens, organoleptic and quality properties of food...
  - Risk management perspective brings a new layer to the content of the existing catalogues as well

# Data models

## EFSA SSD2 data model



## NÉBIH INTEL data model



# Challenges

- Reporting in SSD2 is not possible for all data domains yet
  - we are moving one step further - but are we going to the right direction?
- These are common interests of the national authorities, but the development should not be isolated, we need a common approach
  - to save time
  - to save resources
  - to move to one direction (or at least not to interfere)



# Questions for discussion

1. What are your experiences in relation to harmonization of national data collection and provision code catalogues and data models with SSD2?
2. What future plans MSs have in terms of elaborating new data collection and provision systems?
3. How national amendments should be done? (e.g. how to add and encode a specific national food item to the FoodEx2 system to be consistent with EFSA and with other MS)
4. Is there a need for a coordination (i.e. by EFSA) or a working group (formed from AF members) or only an exchange of information is needed?

Thank you for your attention!

Ákos Józwiak

[jozwiaka@nebih.gov.hu](mailto:jozwiaka@nebih.gov.hu)