



EFSA in a Complex Changing Word

Marta Hugas, PhD
Chief Scientist
European Food Safety Authority (EFSA)

Academia Workshop, 14 March, 2019

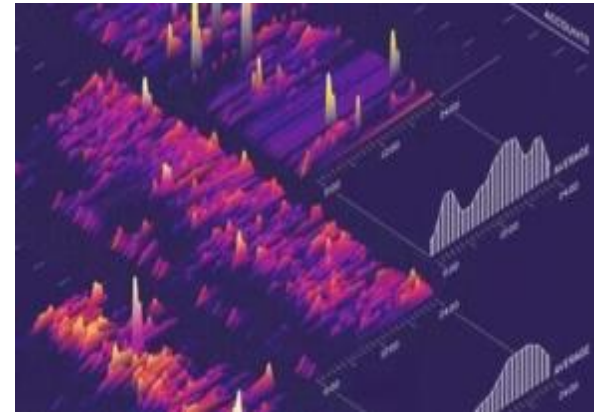
Regulatory science – the constant need to address gaps



THE FUTURE OF RISK ASSESSMENT IS ALREADY HERE



Massive



Quantitative



Distributed



Continuous

KNOWLEDGE GAPS IN REGULATORY SCIENCE



The OneHealth Approach – The one Health Triad





**CONNECT,
COLLABORATE,
CO-DESIGN**

EFSA Knowledge Junction Community

zenodo

Search [] Upload Communities

curator.KnowledgeJunction@efsa.europa.eu

Knowledge Junction

Recent uploads

Search Knowledge Junction []

December 1, 2017 (version 1) Journal article Open Access View

Summary of the EPPO Workshop on Flexible Scope - Wageningen, the Netherlands, 26 to 28 June 2017

Petter, Françoise; McMullen, Madeleine;

Background Historically, the accreditation of laboratories was generally based on a fixed scope which should clearly and unambiguously define the tests covered by the laboratory's accreditation (e.g. immunofluorescence test for the detection of *Ralstonia solanacearum* on potato tubers)

Uploaded on February 13, 2018

March 27, 2017 (v1) Report Open Access View

Risk assessment of the occurrence of alkaloids in lupin seeds

German Federal Institute for Risk Assessment;

The Federal Institute for Risk Assessment (BfR) has assessed the health risks of lupin seeds (lupini beans). This opinion relates to the risks associated with the alkaloid content of the seeds of lupin species and varieties with which deliberate consumption as a food has to be taken into account

Uploaded on February 12, 2018

August 2, 2017 (v1) Report Open Access View

Risk related to modifications in collection and transport temperature during the production process of semi-hard pasta filata cheeses in the mild and piquant varieties: derogation to the temperature set out in Regulation (EC) No 853/2004

National Committee for Food Safety;

Italian National Committee for Food Safety (CNCSA) opinion No. 20 of 5 luglio 2017 on the risk related to modifications in collection and transport temperature during the production process of semi-hard pasta filata cheeses in the mild and

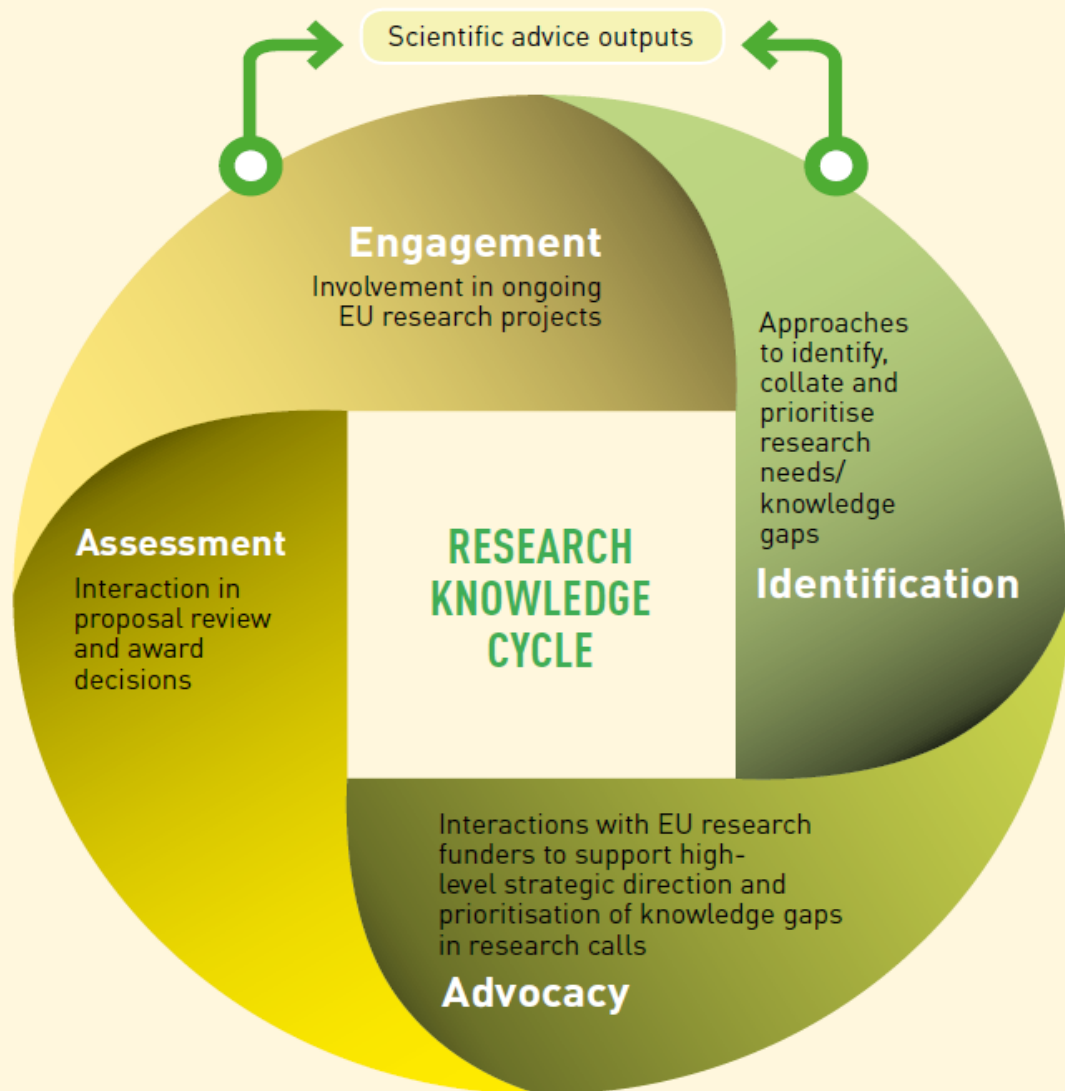
FoodEx2 Database

Organic yoghurt, cow milk, semi skimmed, with cereals and raspberries

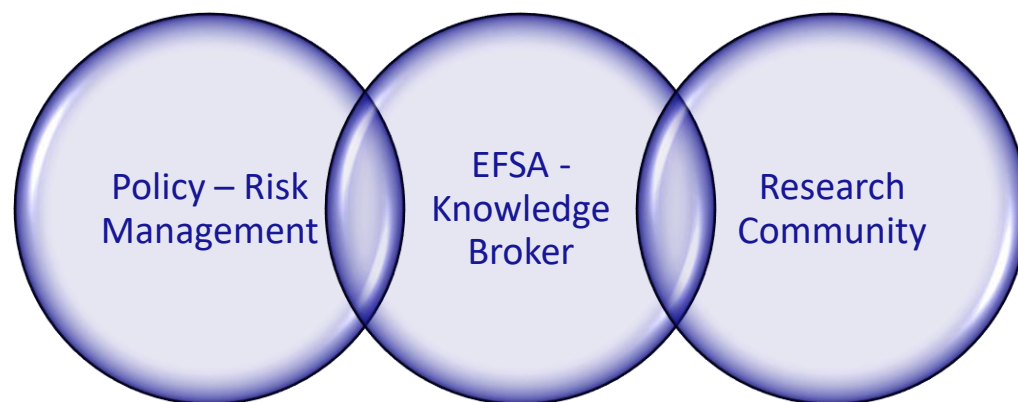


REGULATORY AGENCIES AND THEIR ROLE IN RESEARCH

Representation of the conceptual research
knowledge cycle addressed in the EU-ANSA survey



RARA - RESEARCH ASSEMBLY - COORDINATION





Thank you!

